



CREATIVE AWL

leather patterns

**GULIVER
BACKPACK**

PREPARED BY:

Patryk Ku,
www.CreativeAwl.com



**PLEASE
READ!**

If it wasn't for your support, this pattern wouldn't have come into being, thanks! If you already post pictures of your bag in the social media, I would be invariably glad if you would mention the author. I also encourage you to share your work on our facebook group.

All rights reserved. No content may be shared or reproduced. If you would like to share it, please recommend our facebook group or <https://www.creativeawl.com>

Thank you and have fun!

Patryk

LET'S GO:

01

PRINT THE PATTERN

- Open your pattern in Adobe Acrobat Reader. Set up options of your printer on A4 paper with 0 margins (if needed).
- Every page has a measure - check does it fit.
- Every printed page **MUST HAVE** a border around! If doesn't - move paper left/ right and print again and check the settings

02

VIDEO TUTORIAL:

[HTTPS://YOUTU.BE/2_FOT5EGCJ4](https://youtu.be/2_FOT5EGCJ4)

Cutting patterns:

https://youtu.be/2TNUI_TIk64

03

GIVE A SMILE TO OTHER PEOPLE!

Give a ready product to you family or freind. Give them a smile :)))

Also Check www.CreativeAwl.com for more patterns

04

JOIN OUR FB GROUP

Go there to share your work. Also get more DIY&ideas. We will support you & answer all questions.

<https://www.facebook.com/groups/CreativeAwlPatterns>

YOU NEED

TOOLS

- sharp knife
- 1-1,5 and 3, 4, 8, 10mm hole punchers
- hammer
- 2 needles
- paper tape
- a home printer

MATERIALS

- 9.1 sqft (0,85 sqm) preferable soft 4-5 oz leather
- 0,8mm waxed thread
- few rivets
- 5 x 20mm buckles
- 4 x 20mm d-rings
- few rivets



SHARE YOUR WORK

<https://www.facebook.com/groups/CreativeAwlPatterns>

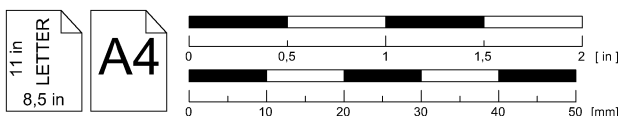
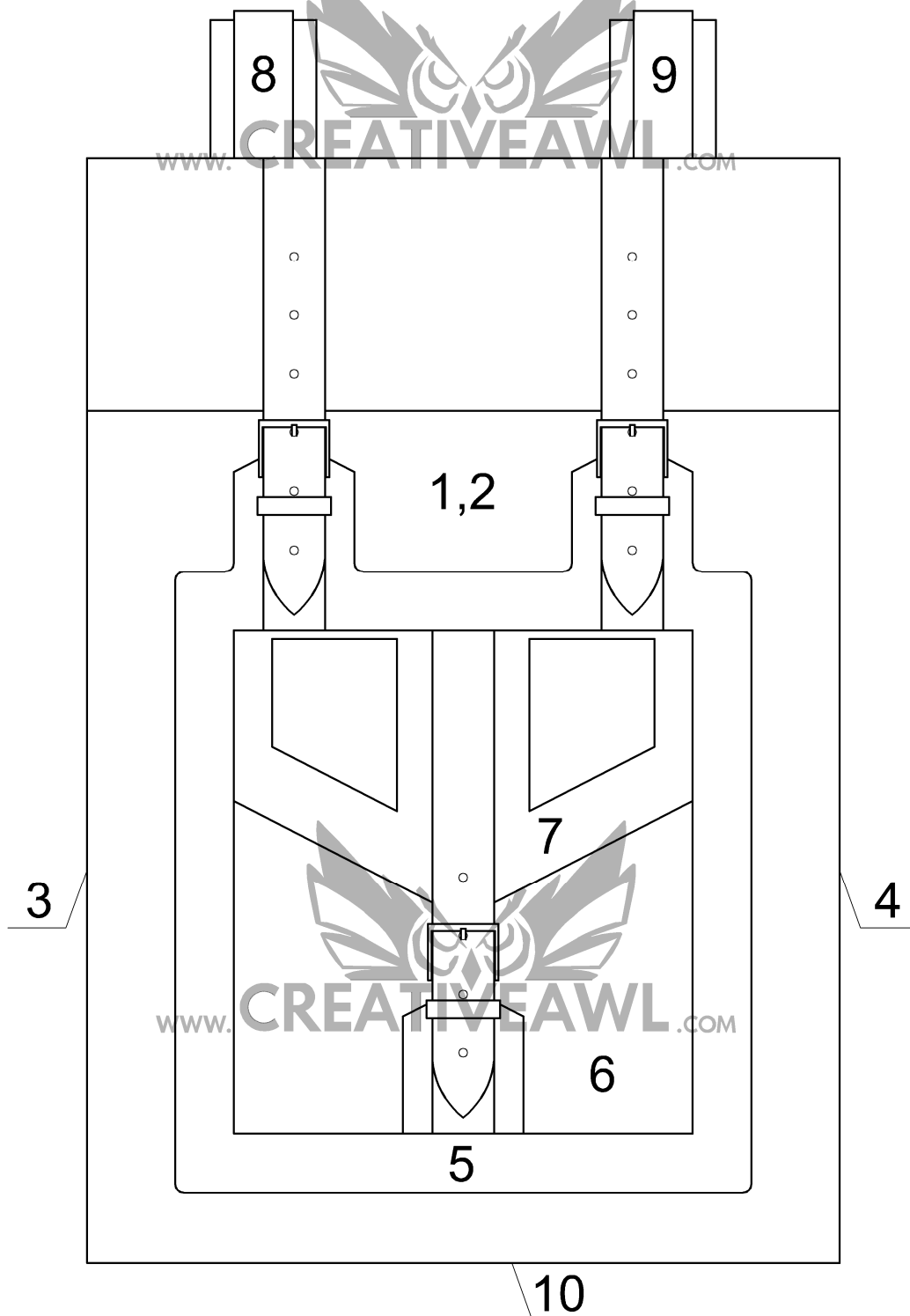
If you got ANY problem,- don't be shy to ask directly on Etsy or facebook

Guliver rolltop backpack:

pages 5 - 27

-The number in the circle shows which holes are to be connected. Example: ①

-Numbers 1, 2, 3 (...) without a circle indicate where the piece lies in the overview drawing.



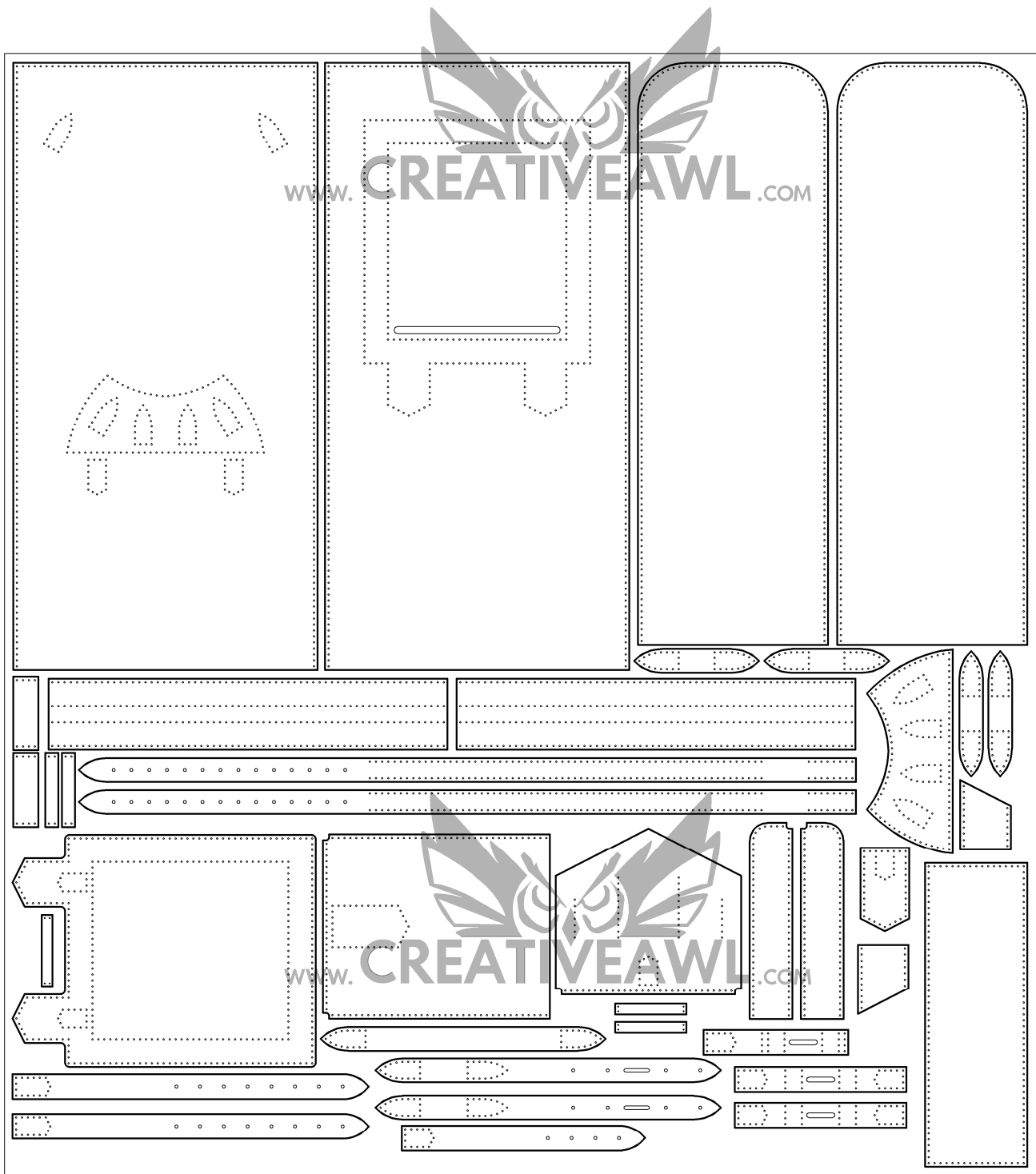
10

Sketch drawing

Leather needed for a Gulliver rolltop
backpack:

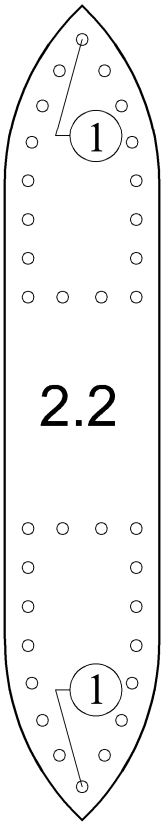
about 0,85 m2

870 mm (34.8 in)



950 mm (38 in)

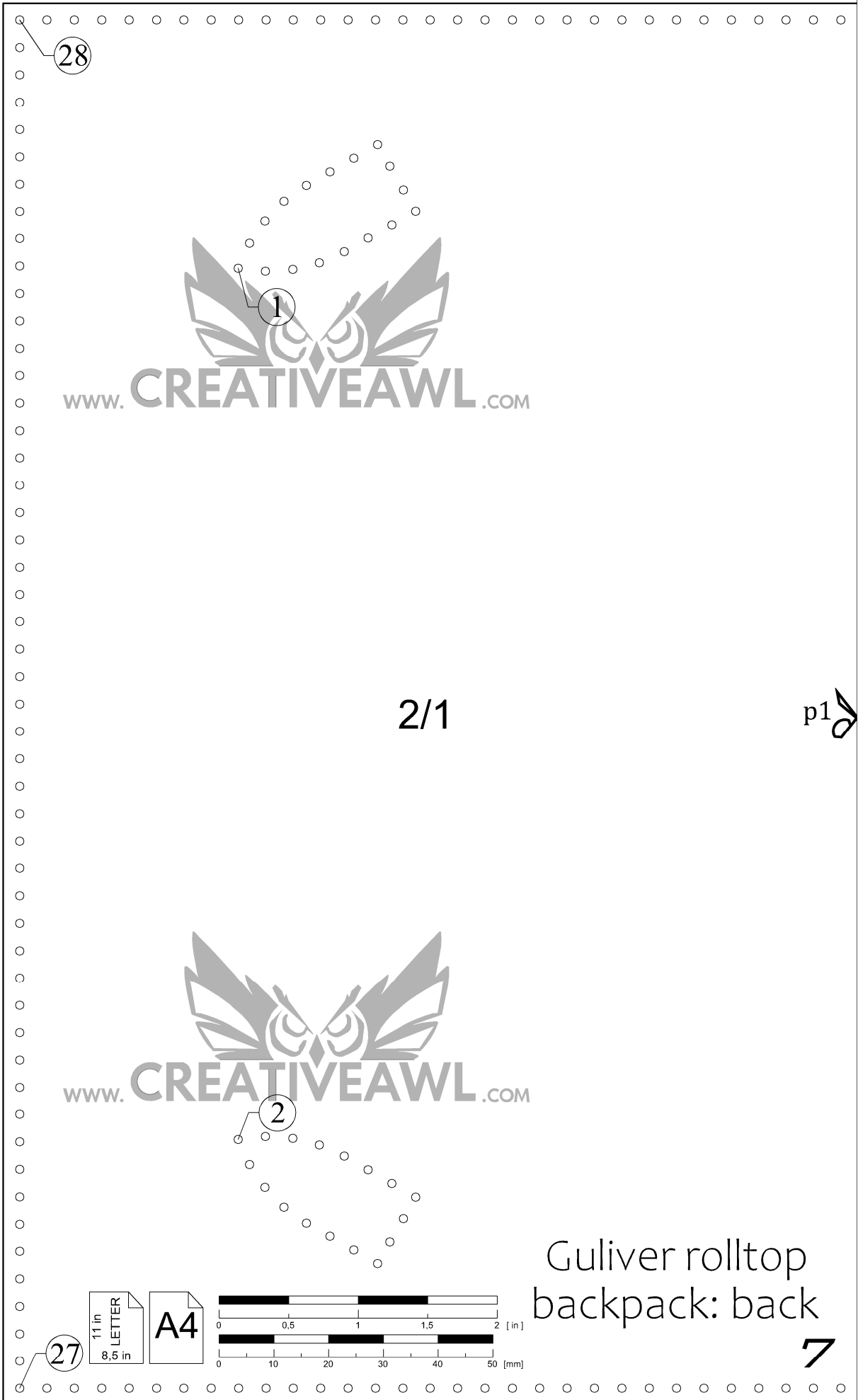
Sketch drawing
Bill of materials



2.2



2.3



28

1

www.CREATIVEAWL.COM

2/1

p1

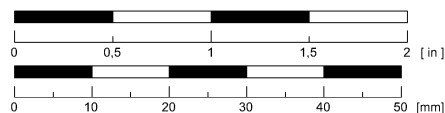
www.CREATIVEAWL.COM

2

27

11 in
LETTER
8,5 in

A4



Guliver rolltop
backpack: back

7



3

4

5

6

7



p1

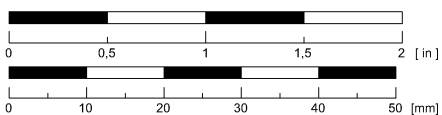
2/2

p2

Guliver rolltop
backpack: back

11 in
LETTER
8,5 in

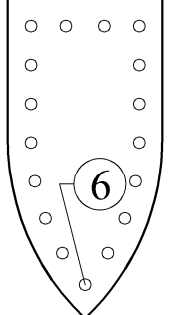
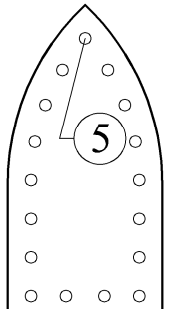
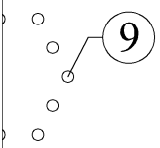
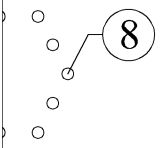
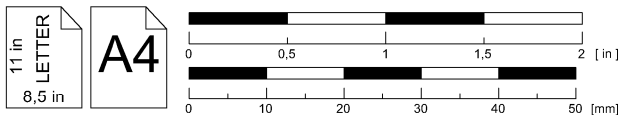
A4



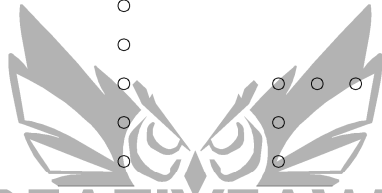
8



Guliver rolltop
backpack: back



25



www.CREATIVEAWL.COM

1/1

p3



www.CREATIVEAWL.COM

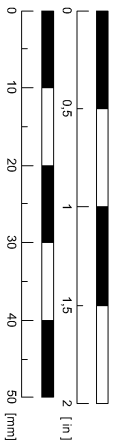
Guliver rolltop
backpack: front

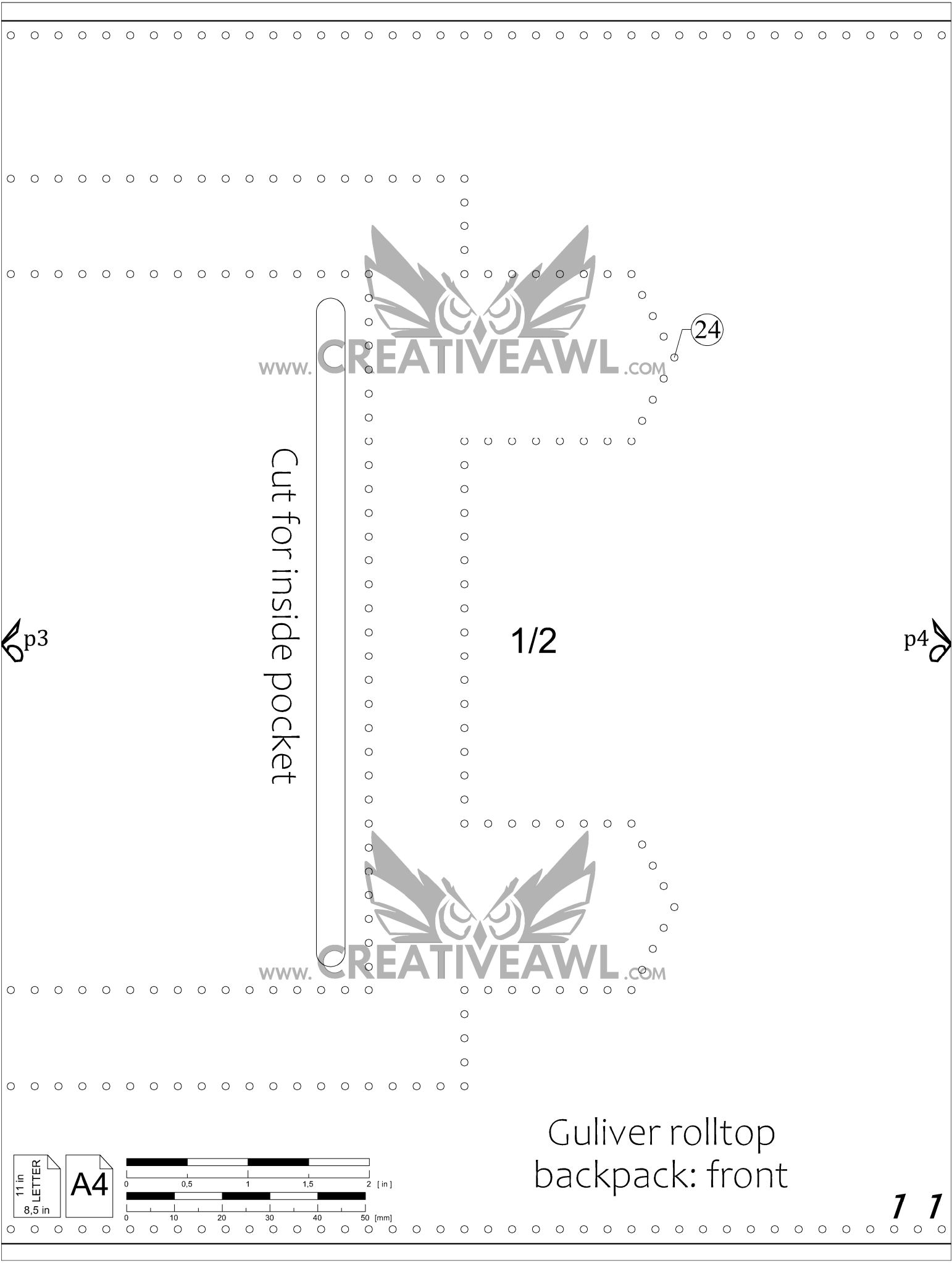
26

1

11 in
8.5 in
LETTER

A4





Cut for inside pocket

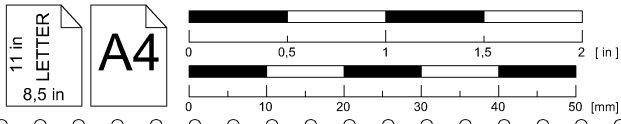
1/2



Guliver rolltop
backpack: front

p3

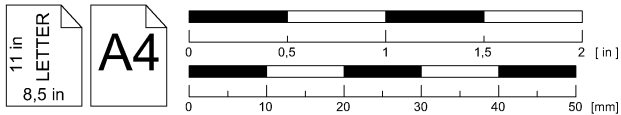
p4



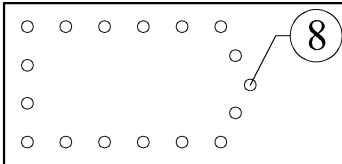


p4

1/3

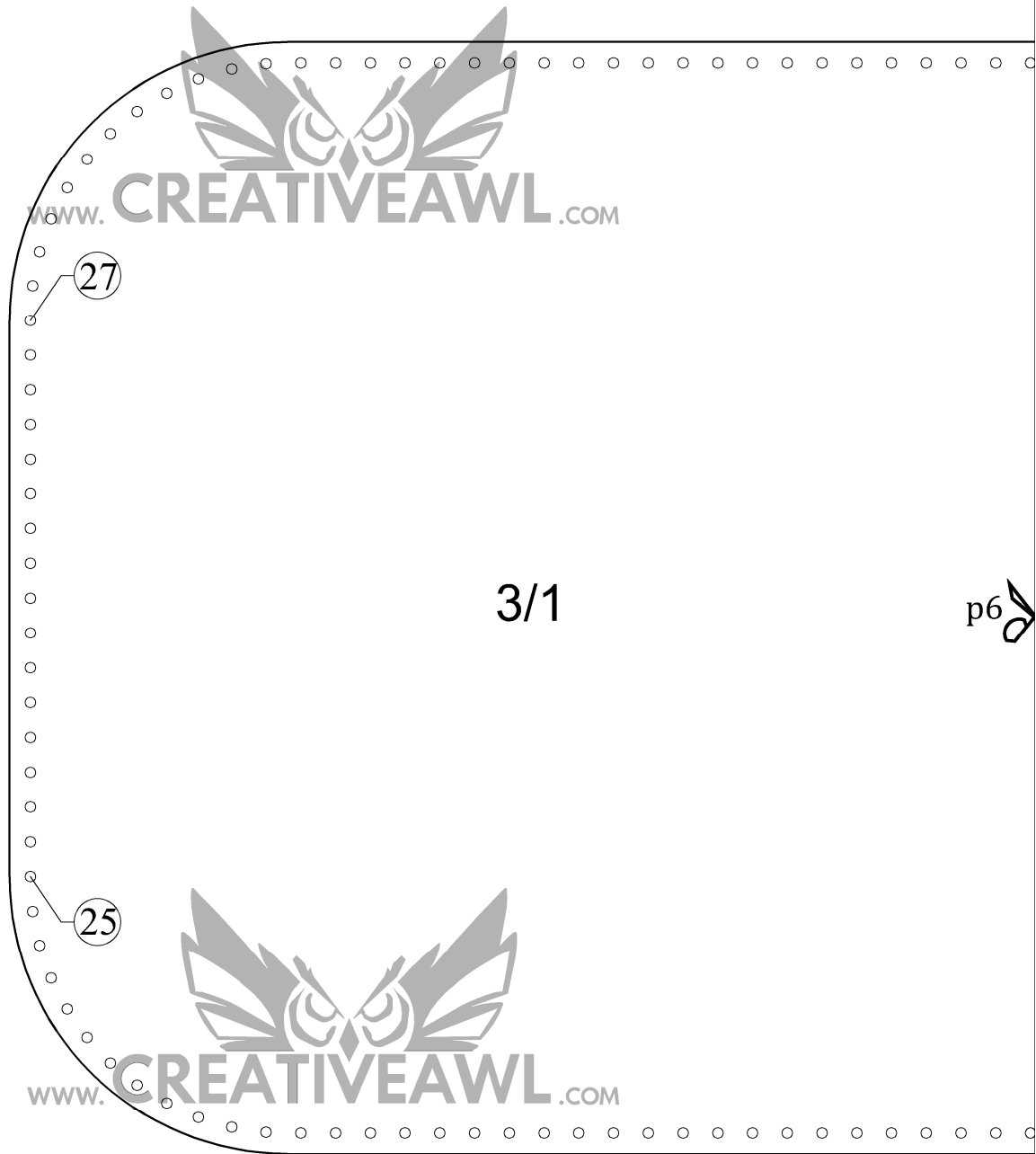


Guliver rolltop
backpack: front



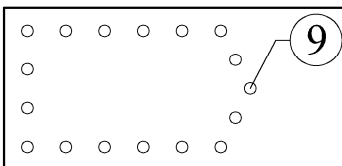
2.7/1

p5



3/1

p6

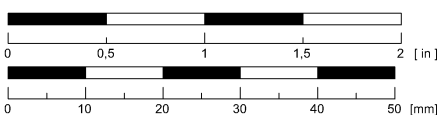


2.8/1

p8

11 in
LETTER
8,5 in

A4

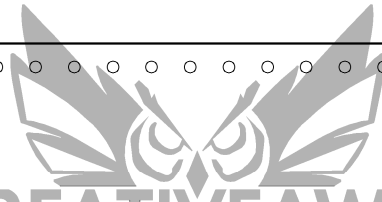


Guliver rolltop backpack: side
and back components

13

p5

2.7/2



www.CREATIVEAWL.COM

p6

3/2

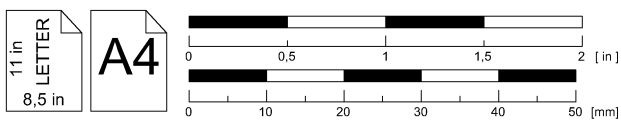
p7



www.CREATIVEAWL.COM

p8

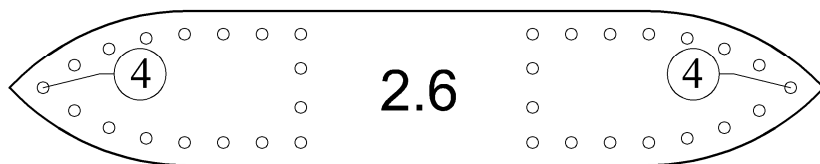
2.8/2





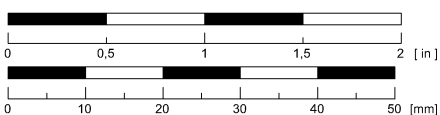
p7

3/3



11 in
LETTER
8,5 in

A4



Guliver rolltop backpack: side
and back components



11 in
LETTER
8,5 in

A4



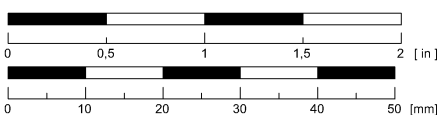
Guliver rolltop
backpack: side



p9

4/2

p10



Guliver rolltop
backpack: side



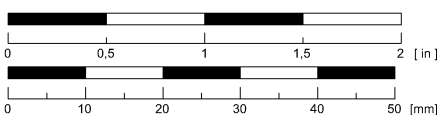
p10

4/3

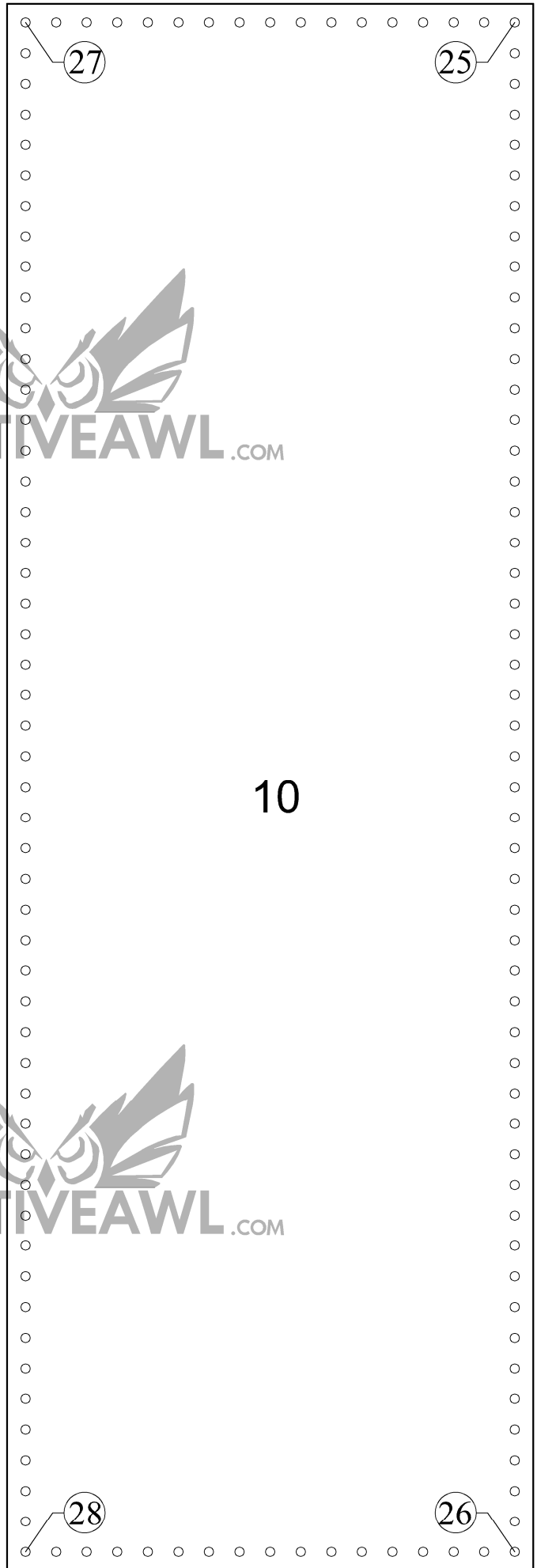
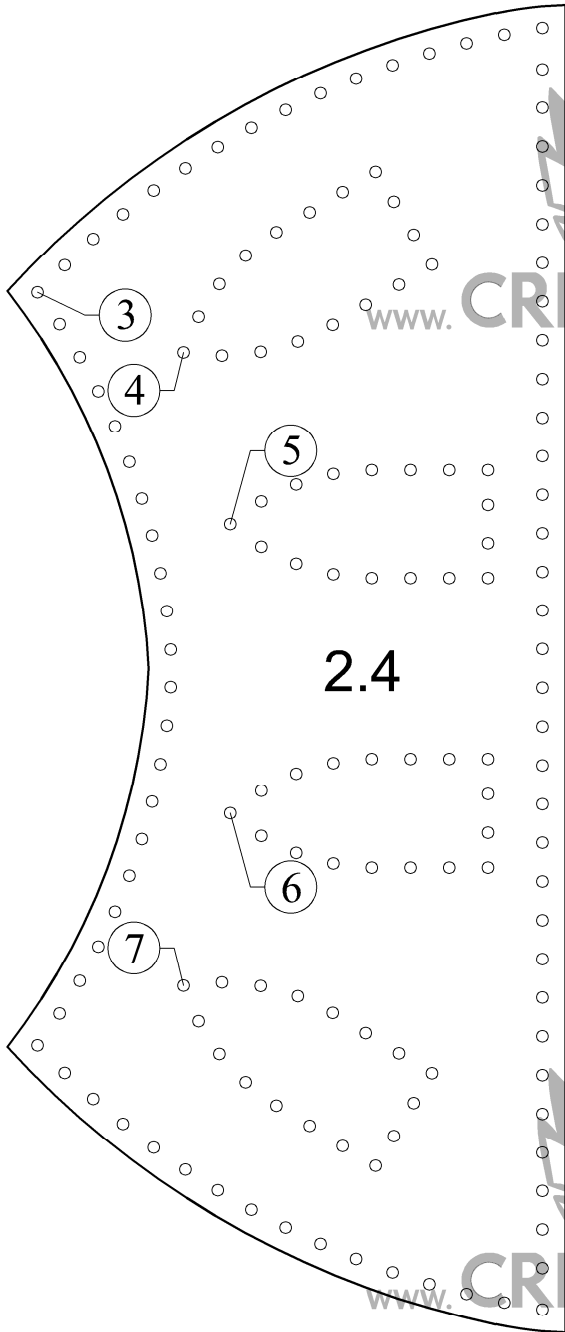


11 in
LETTER
8,5 in

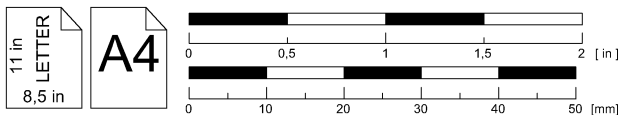
A4

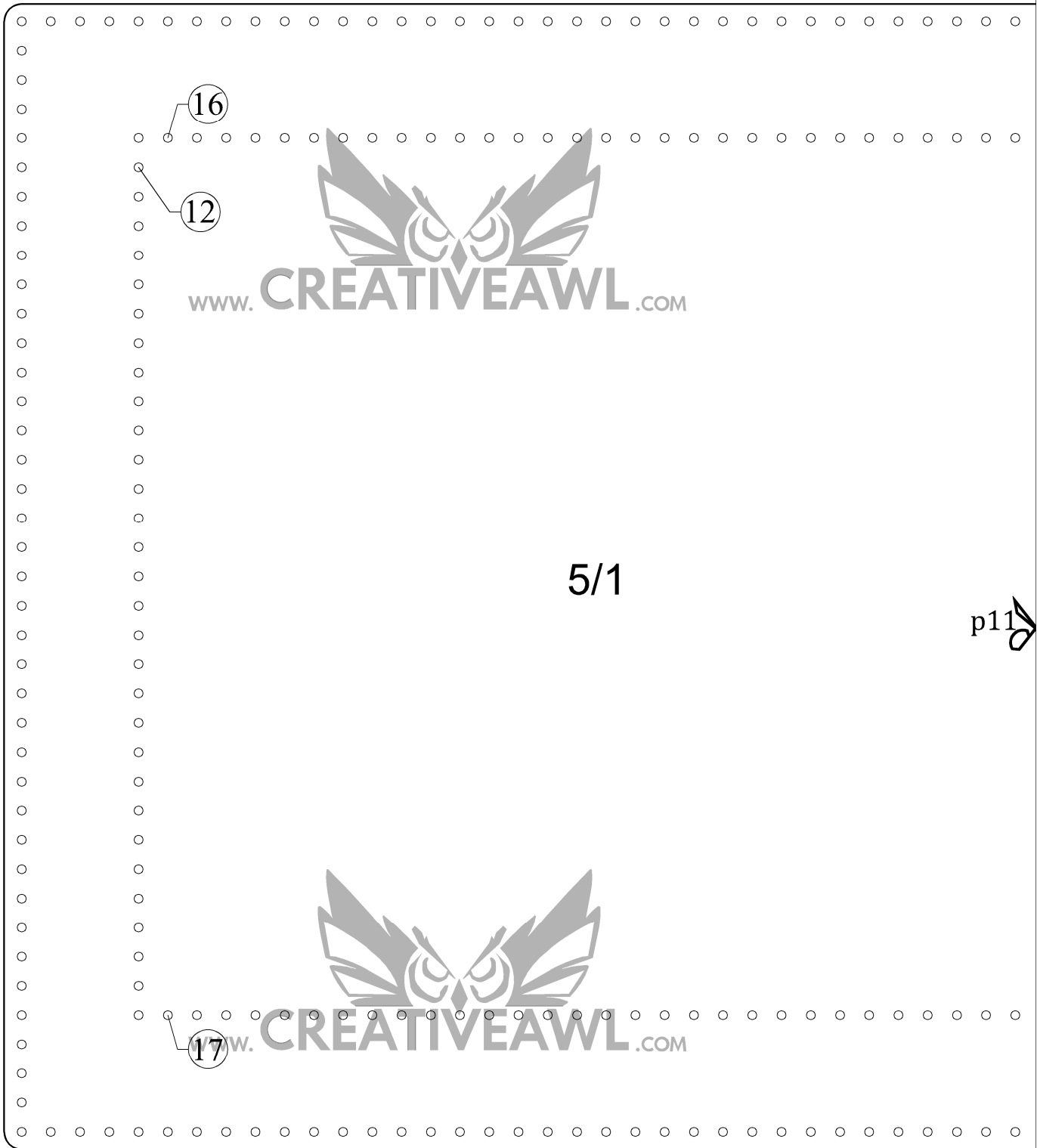


Guliver rolltop
backpack: side



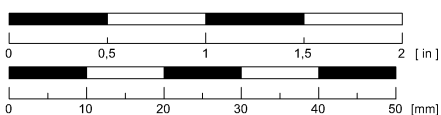
Guliver rolltop
backpack: bottom and
back component



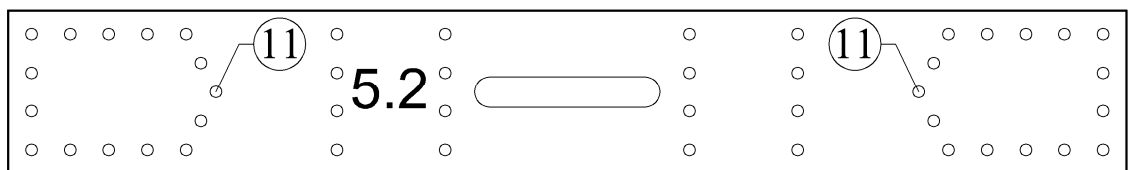
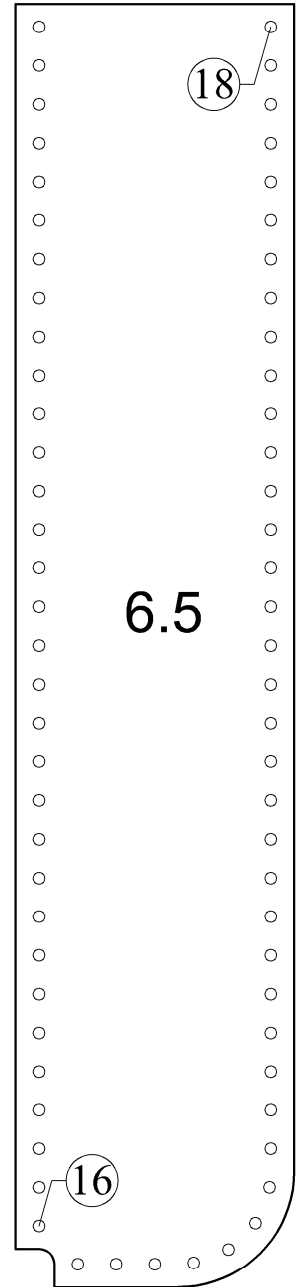
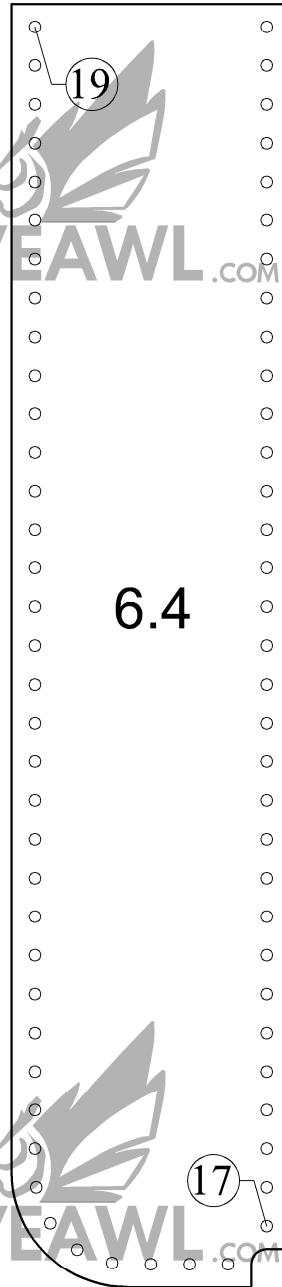
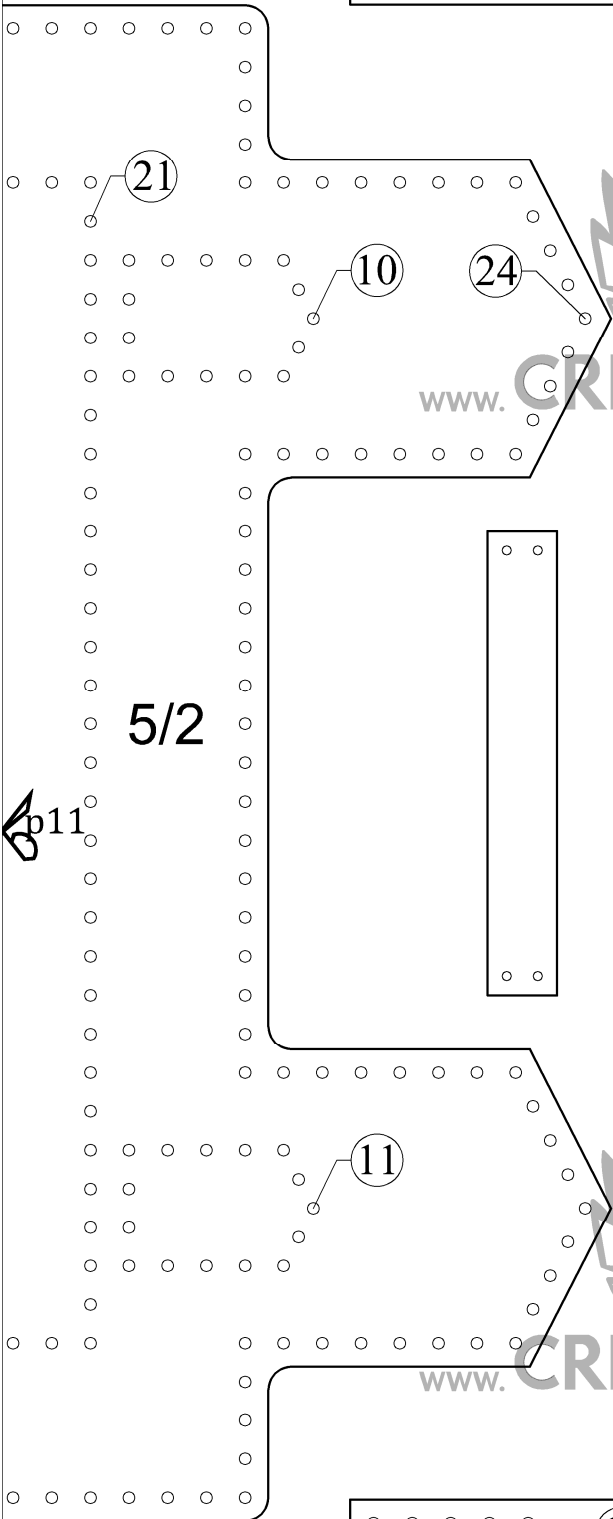
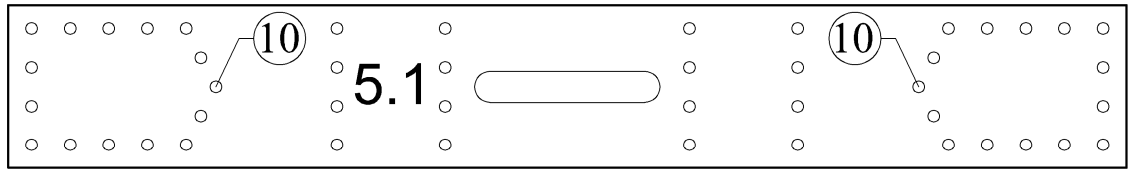


11 in
LETTER
8,5 in

A4



Guliver rolltop backpack:
front pocket

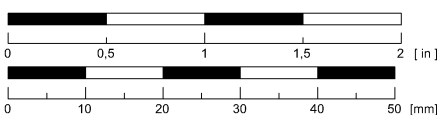


www.CREATIVEAWL.com

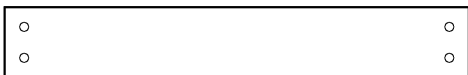
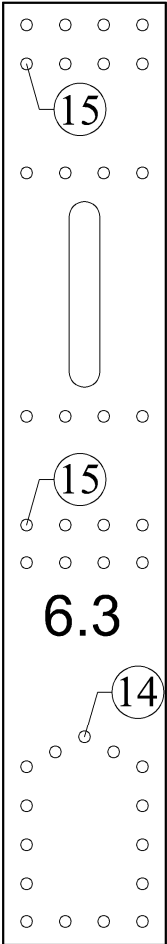
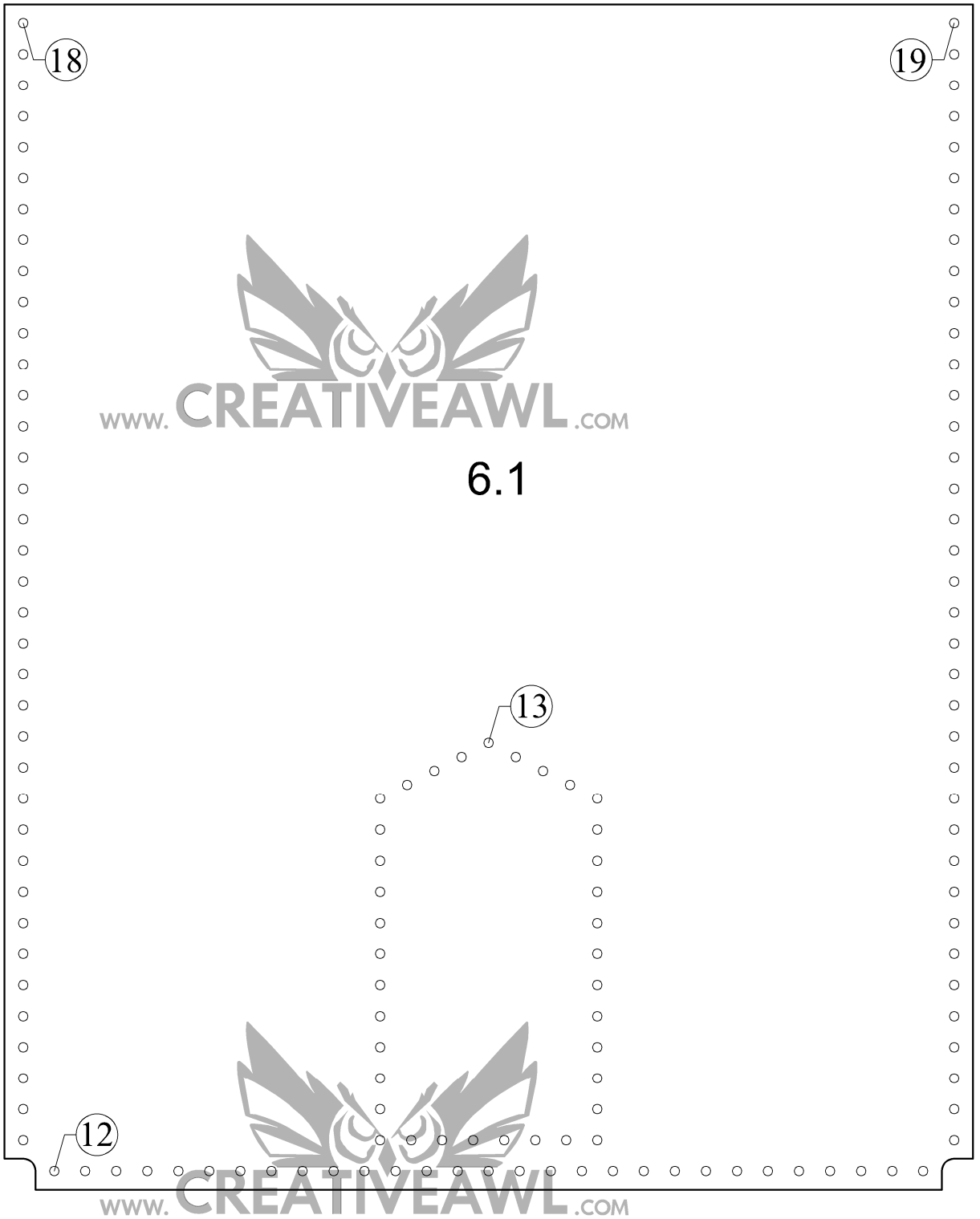
www.CREATIVEAWL.com

11 in
LETTER
8,5 in

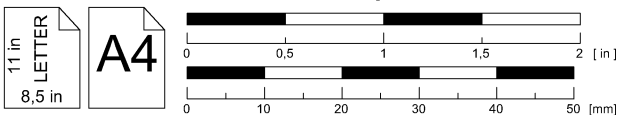
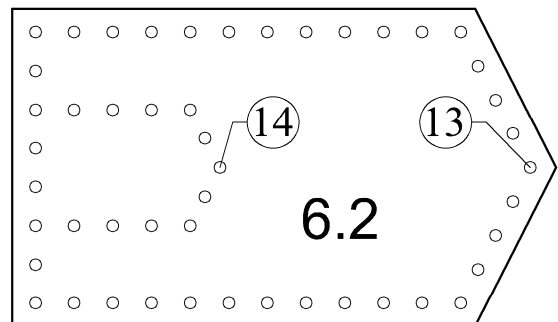
A4

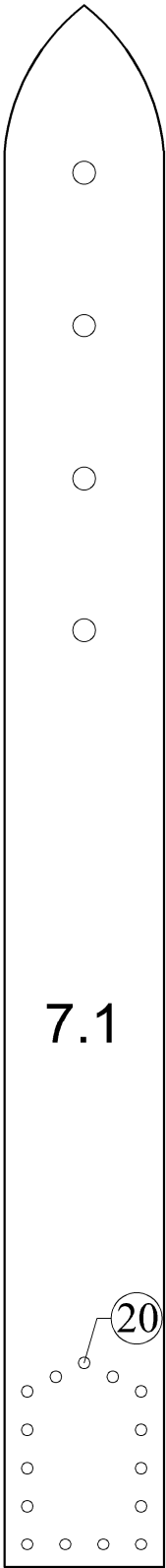


Guliver rolltop backpack:
front pocket

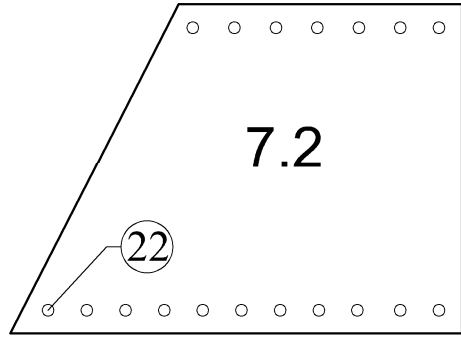


Guliver rolltop backpack:
front pocket

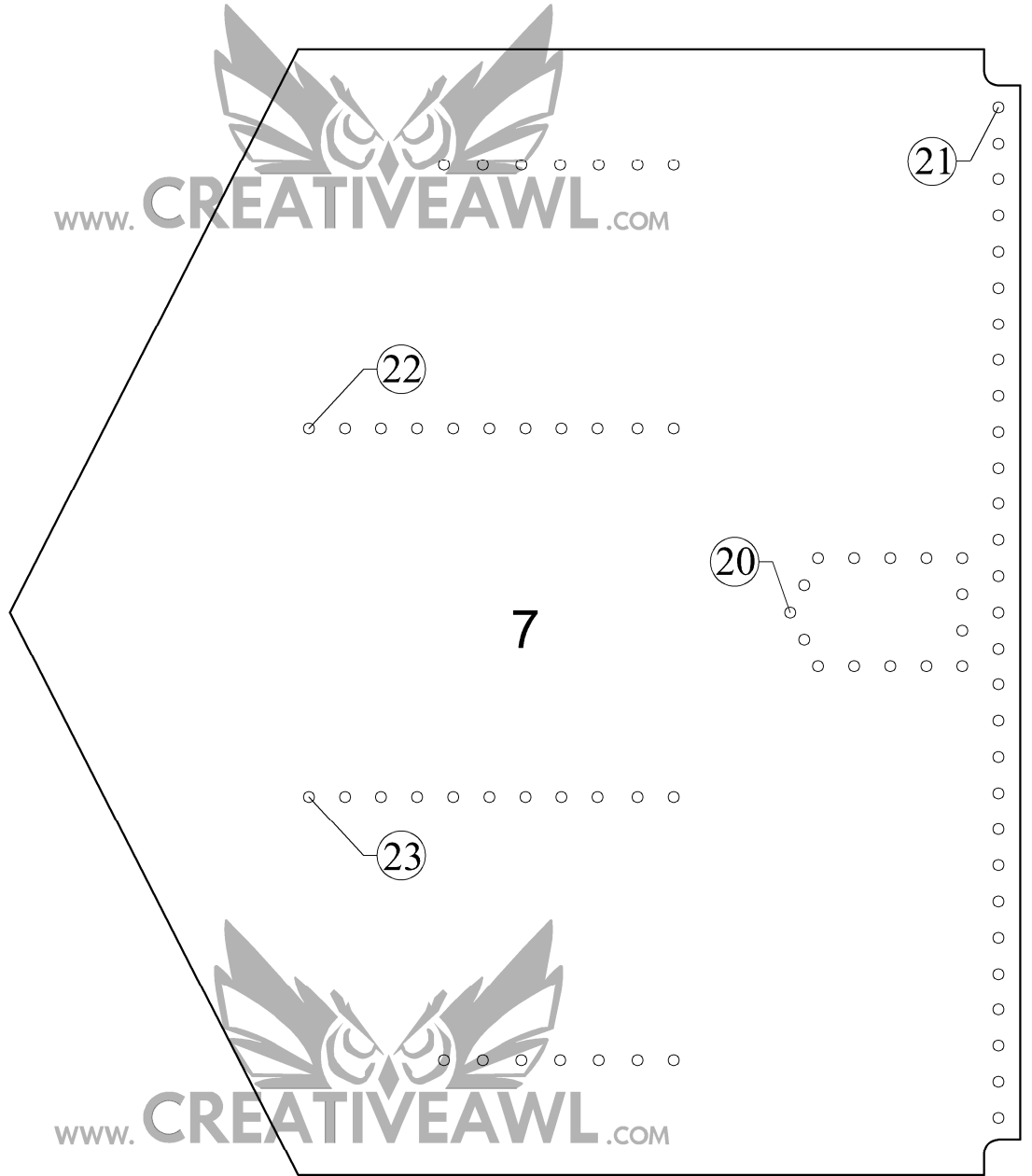




7.1

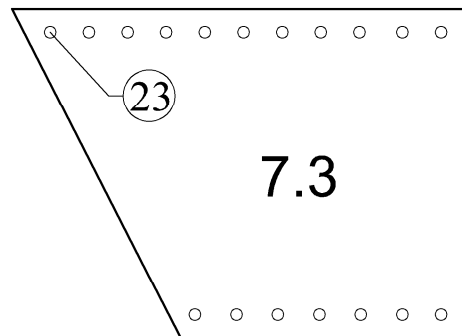


7.2



7

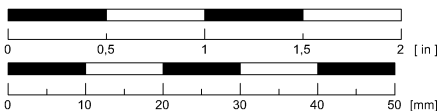
Guliver rolltop
backpack: flap of the
front pocket

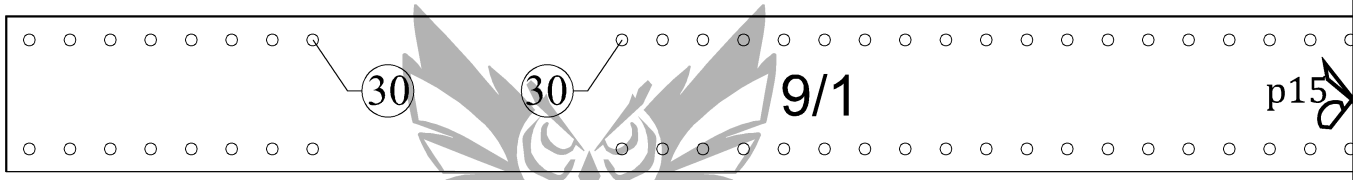
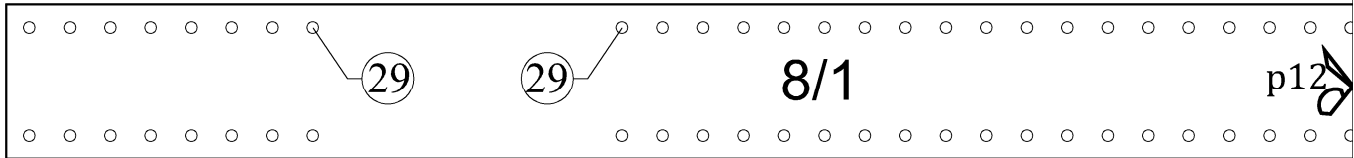


7.3

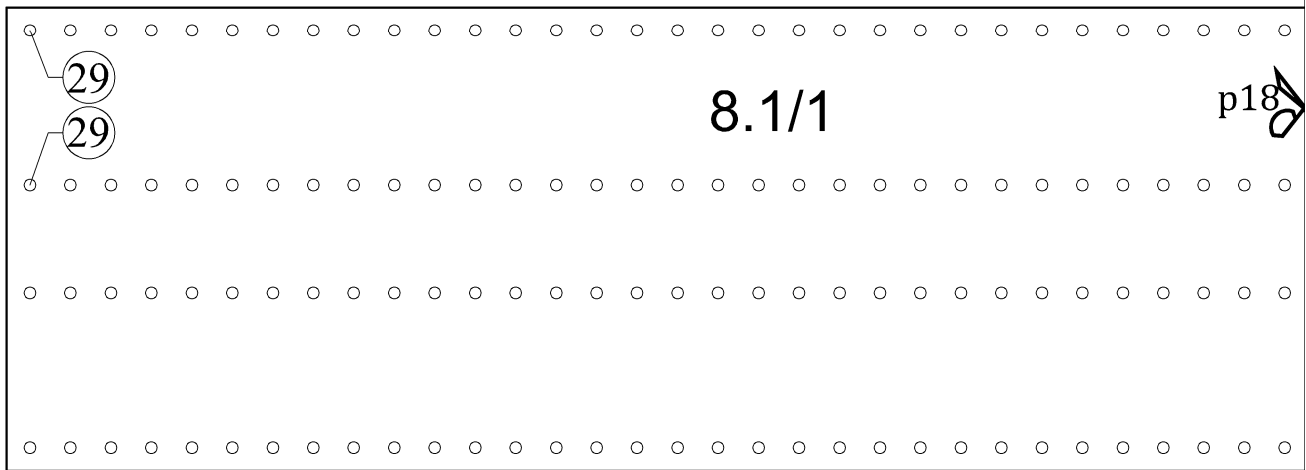
11 in
LETTER
8,5 in

A4



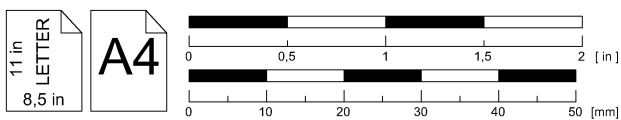


www.CREATIVEAWL.COM



www.CREATIVEAWL.COM

Guliver rolltop backpack:
shoulder straps



p12

8/2

p13

p15

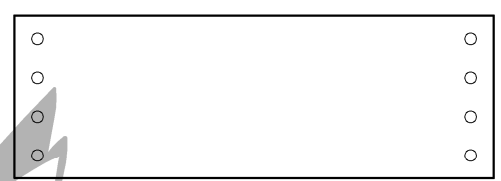
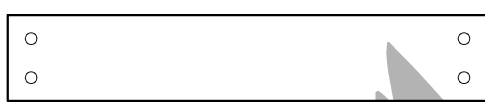
9/2

p16

www.CREATIVEAWL.COM

p18

8.1/2



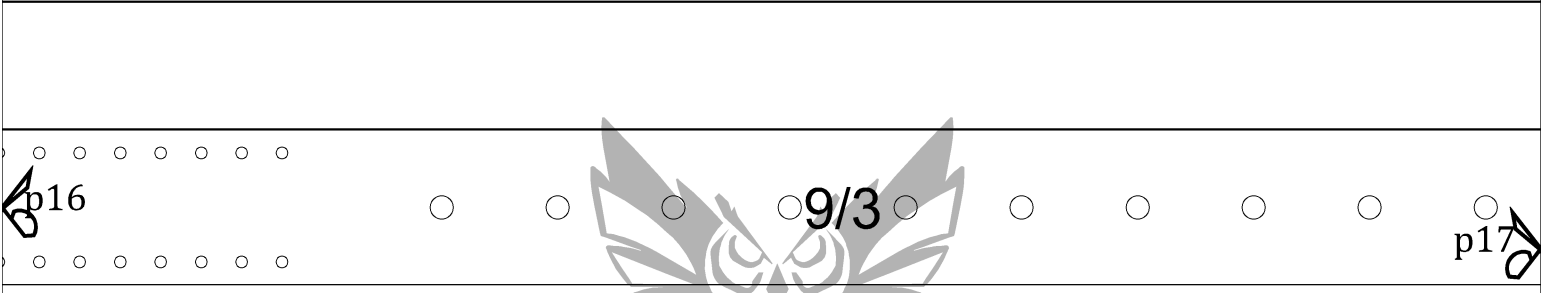
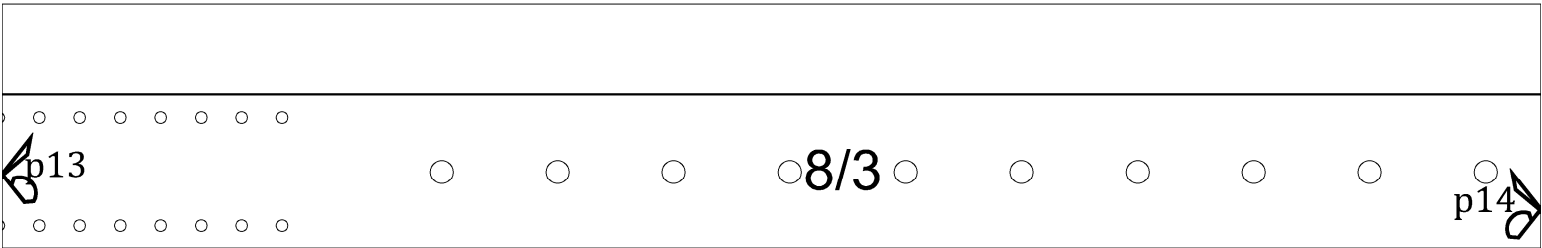
www.CREATIVEAWL.COM

Guliver rolltop backpack:
shoulder straps

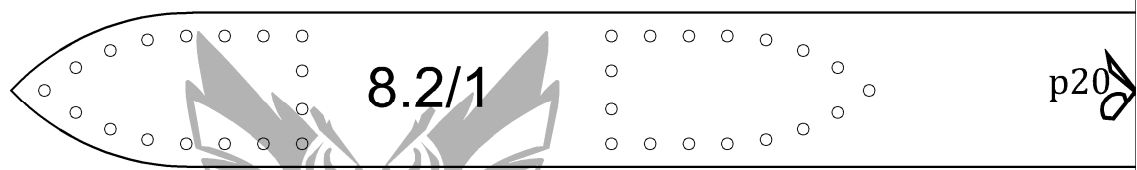
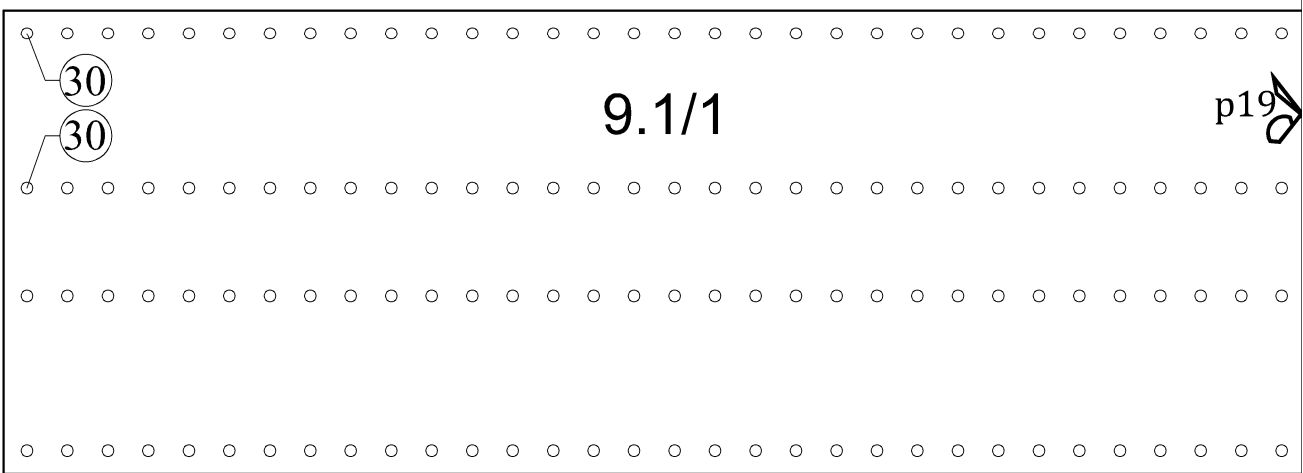
11 in
LETTER
8,5 in

A4

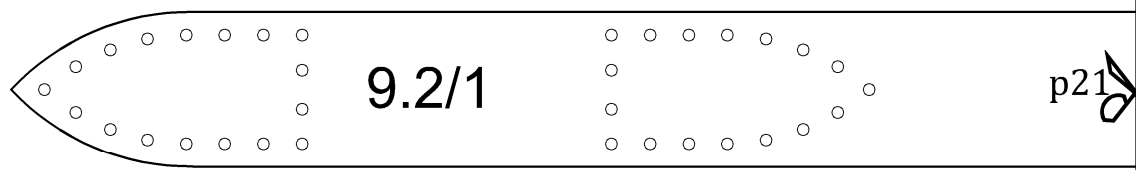




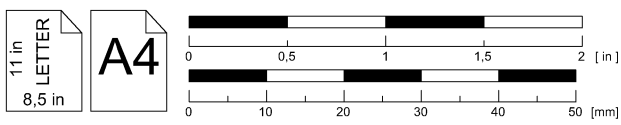
www.CREATIVEAWL.COM

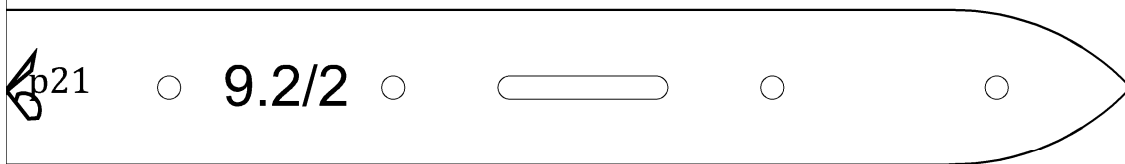
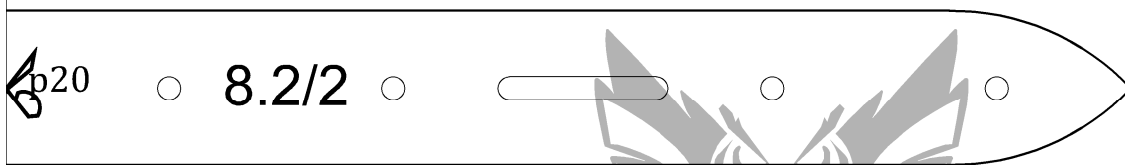
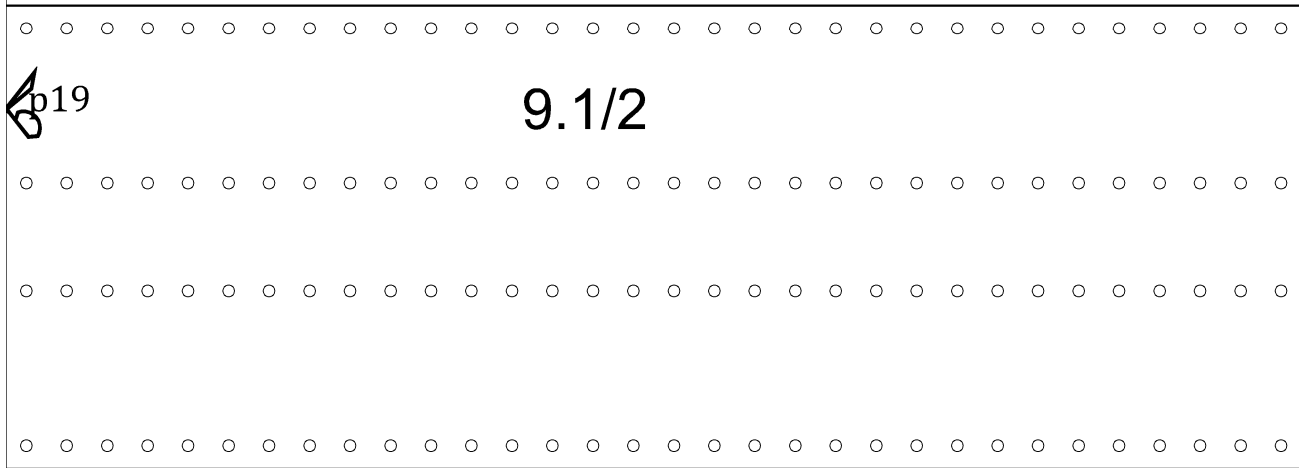


www.CREATIVEAWL.COM



Guliver rolltop backpack:
shoulder straps





Guliver rolltop backpack:
shoulder straps

