

ASSEMBLY INSTRUCTIONS**PAGE 1 / 3**

How to cut out the parts from leather : be noticed that I had to separate parts #1,#2,#3,#4,#5,#9 and #10 into smaller pieces to fit in A4 paper. Stick separated parts to each other with tape by putting them beside each other without any overlap to make the parts as you can see on instructions page2 and page3. I Considered all needed parts in PDF file. Cut parts #(1 to 8) from leather and it's better to skive #6 or use a thinner leather for it. parts #9 and #10 are lining of the zippers so do not cut them from leather. Cut #9 and #10 from lining fabric. Also cut a rectangle from lining in sizes of 21.5 x 24.5 centimeters . if you like to have double layer handles, you should cut #5 twice and stick them back to back. you also need two straps in sizes of 70 cm long and 2.5 cm wide and two straps in sizes of 30 cm long and 2.5 cm wide for the backpack straps.

How to make the bag : First, stick a piece of zipper to zipper3 slot. stick the top edge of lining #11 to the top of slot and stitch the top of the zipper3. then fold the lining and stick the bottom of #11 to the bottom of slot and stitch the bottom of the zipper3. then stitch the left and right sides of #11 to have a pocket. now stick the two parts of #6 at the beginning and the end of the slot according to (k) and (t) holes and make sure the direction of the arrow on #6 be like instructions chart page2. (check photos at the end of the PDF file). Now stick a 50 cm piece of zipper to the zipper2 slot and then stick the lining #10 behind #1 and then finally stitch #6 and the zipper. Now stitch the tips of #5 on #1. Then stick the lining #9 behind #1 but do not glue the space beneath the zipper2, so it makes the pocket of zipper2 and it covers the stitches of #5. After that, pass the #7 through 3cm D-ring and fold it and stitch it on #2. Also pass #8 through 2.5cm D-ring and stitch it on #2. do the same for the other #8. Then stitch the tips of second part of #5 on #2. Then cut #9 from lining again and stick it behind #2 to cover stitches. now stick zipper1 behind #3 and stick a layer of lining behind #3 and then stitch the zipper1. Now put the (m) holes of #4 on the (m) holes of #3 and stitch (m). then stitch #3 to #2 along (s) and stitch #4 to #2 along (a). then stitch #3 and #4 to #1 along (c)and(e). in these seams, #1 and #2 should overlap #3 and #4 edges. Two connect the backpack straps, connect the tip of 70 cm strap to a swivel clasp and form the other tip similar to #5 and punch some holes with 2 cm gap on this tip. connect one tip of 30 cm strap to swivel clasp and connect the other tip to a buckle. lock the 80 cm strap to this buckle. then connect the swivel clasps to D-rings.

Please follow us on Instagram >> @bag.pattern to see new models and DM for help and support. good luck...

MATERIALS AND FITTINGS NEEDED

Cowhide 5-7 oz leather : approx. 8 ft²

Linen or other waxed thread : approx. 60 m

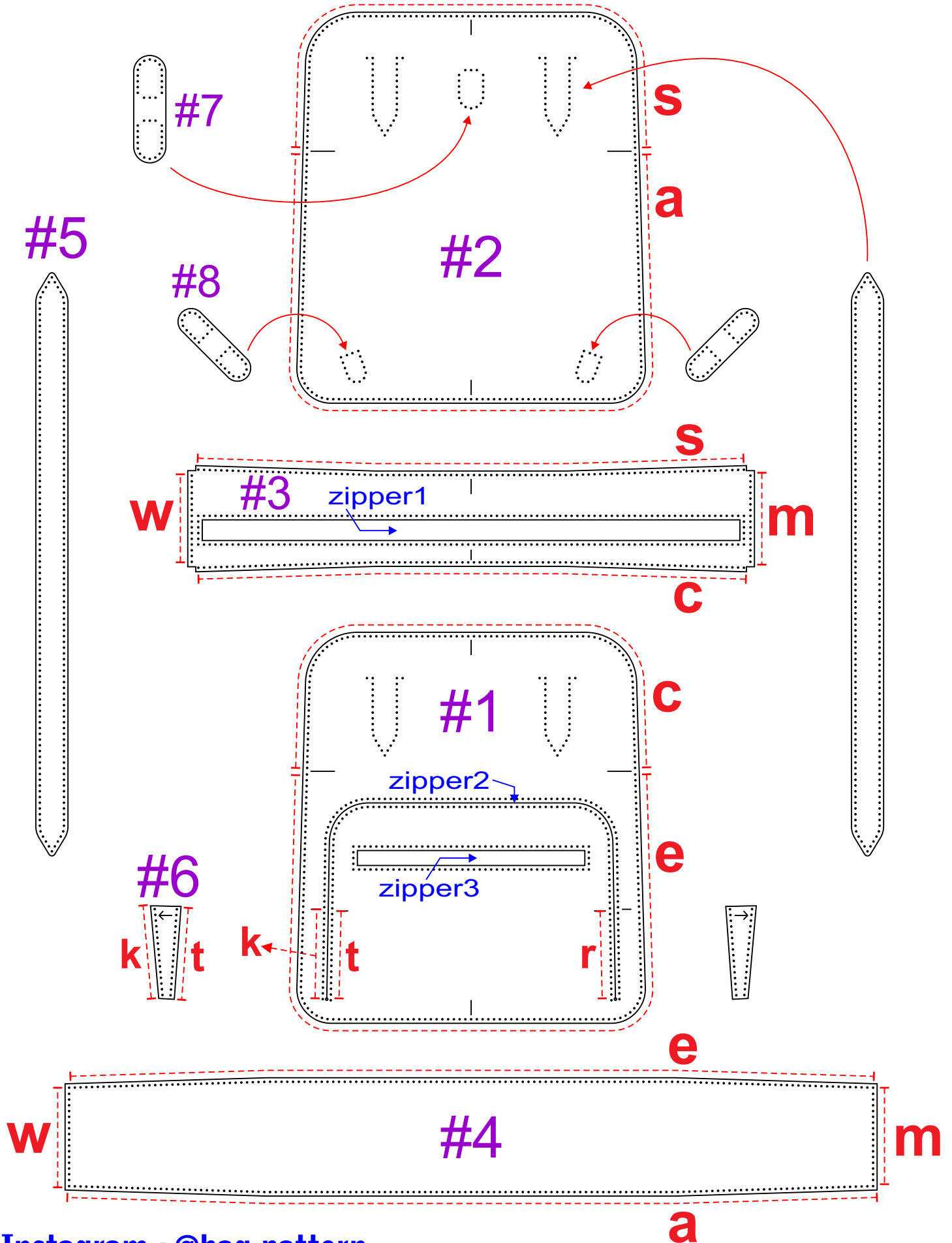
Size 1 to 1.5 cm Magnetic Snap : 3

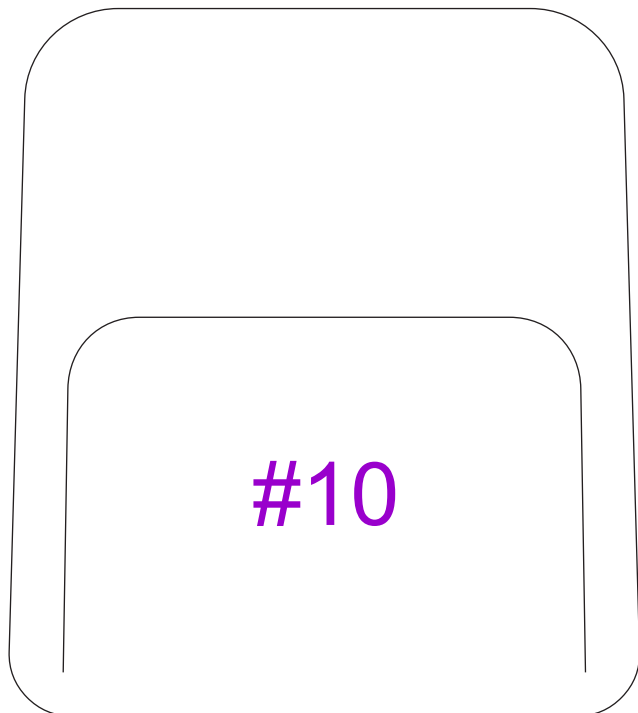
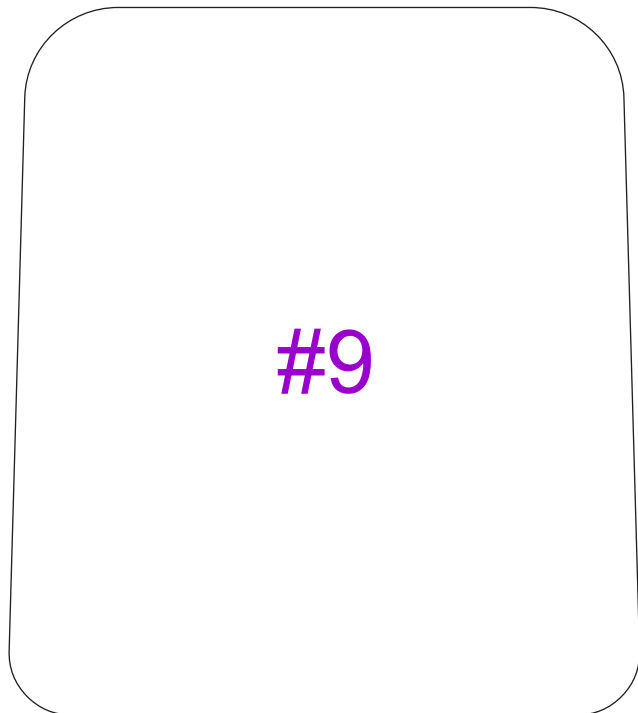
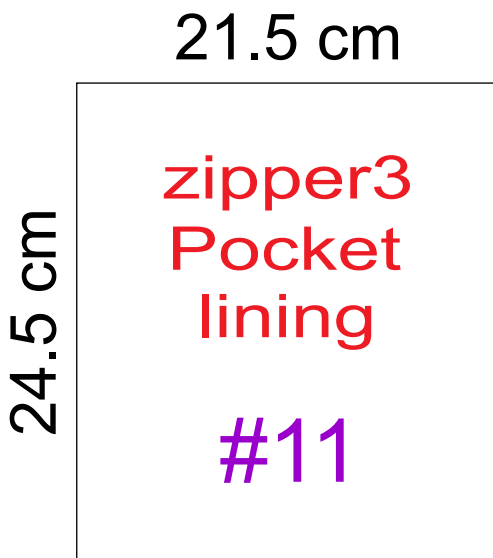
Lining Fabric : 8 ft² - Zipper : 160 cm - Zipper Puller : 5

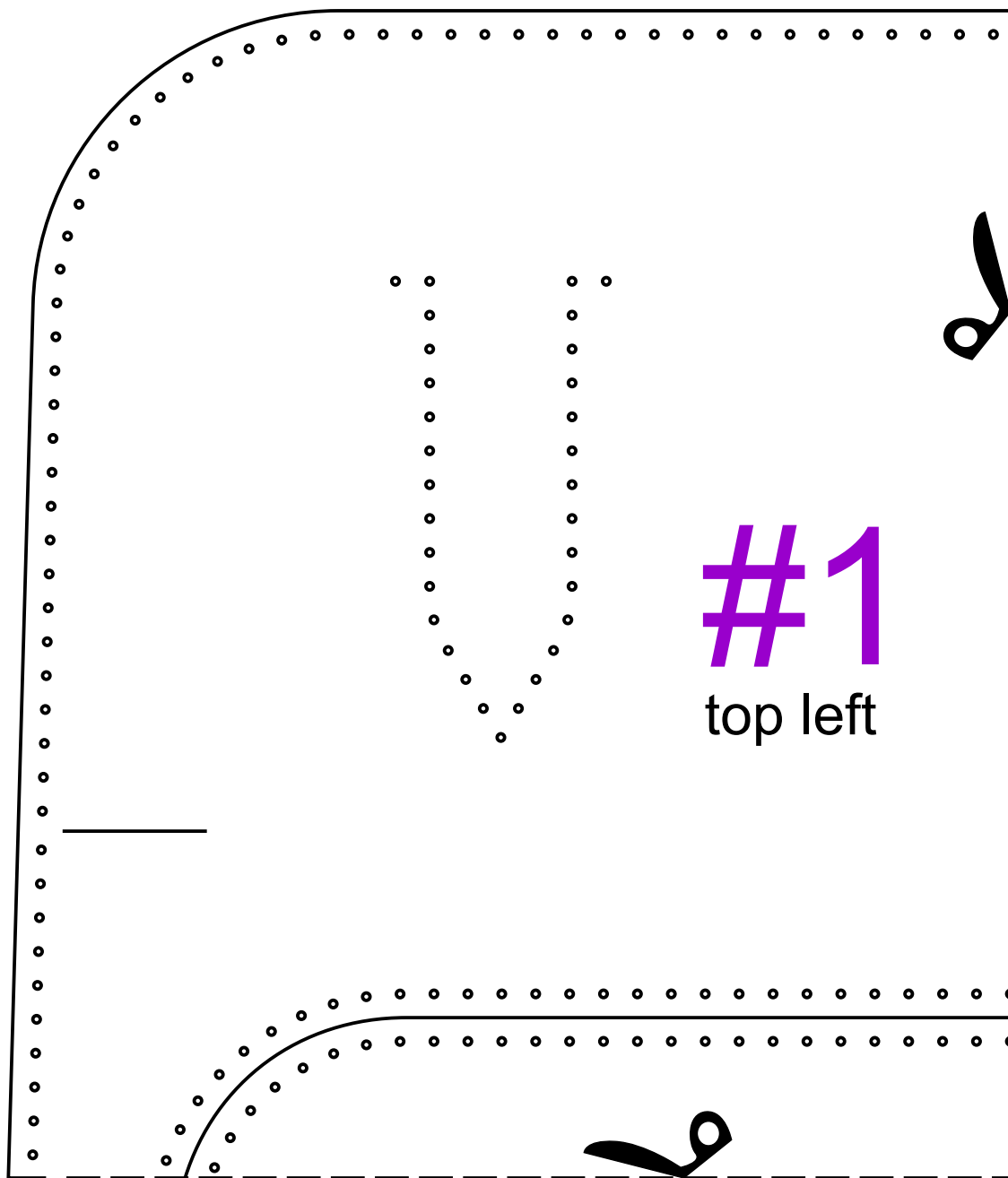
Size 2.5 D-ring and buckle : 2

Size 3 D-ring : 1

Size 2.5 swivel clasp : 2



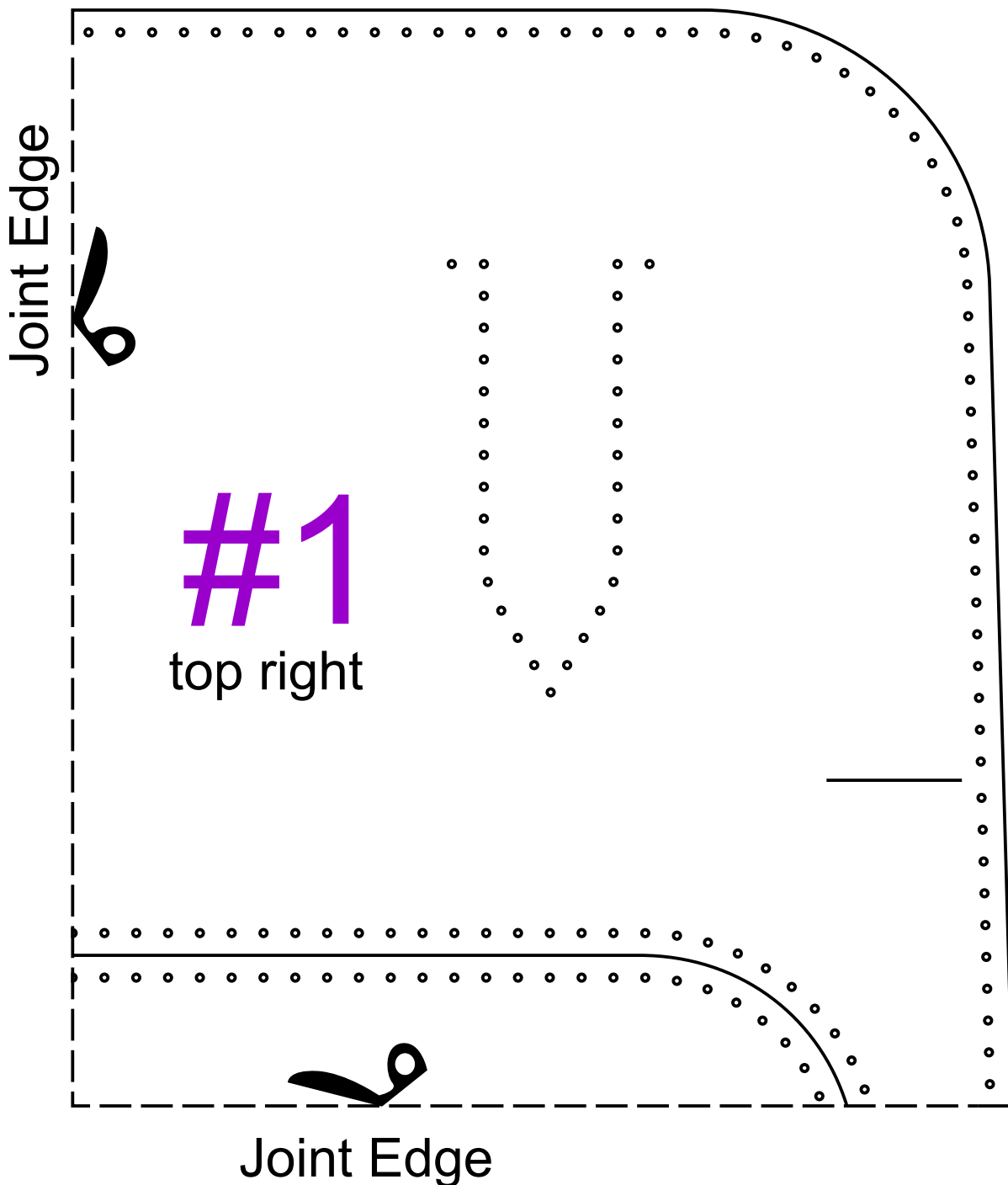




Joint Edge

240 mm

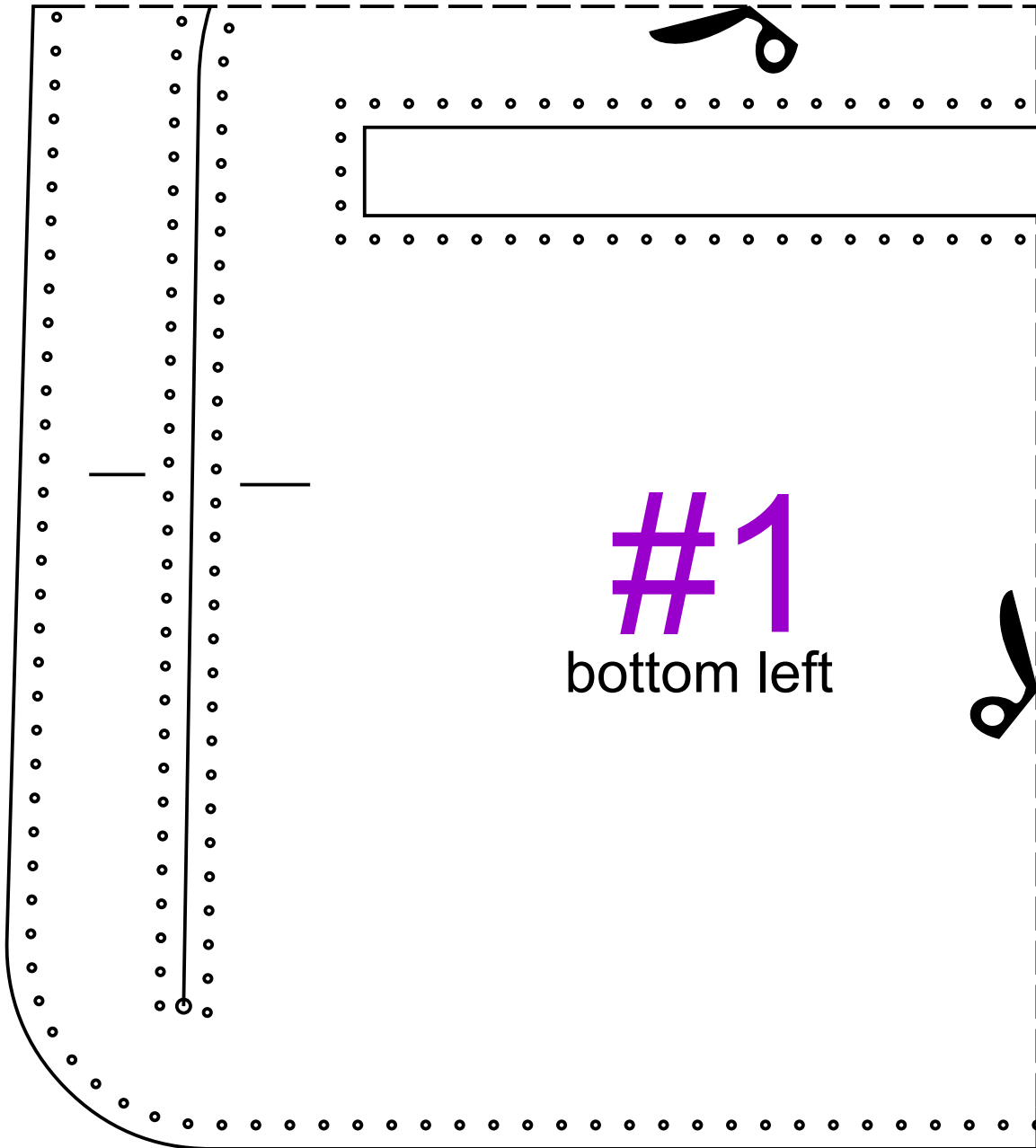
180 mm



240 mm

180 mm

Joint Edge



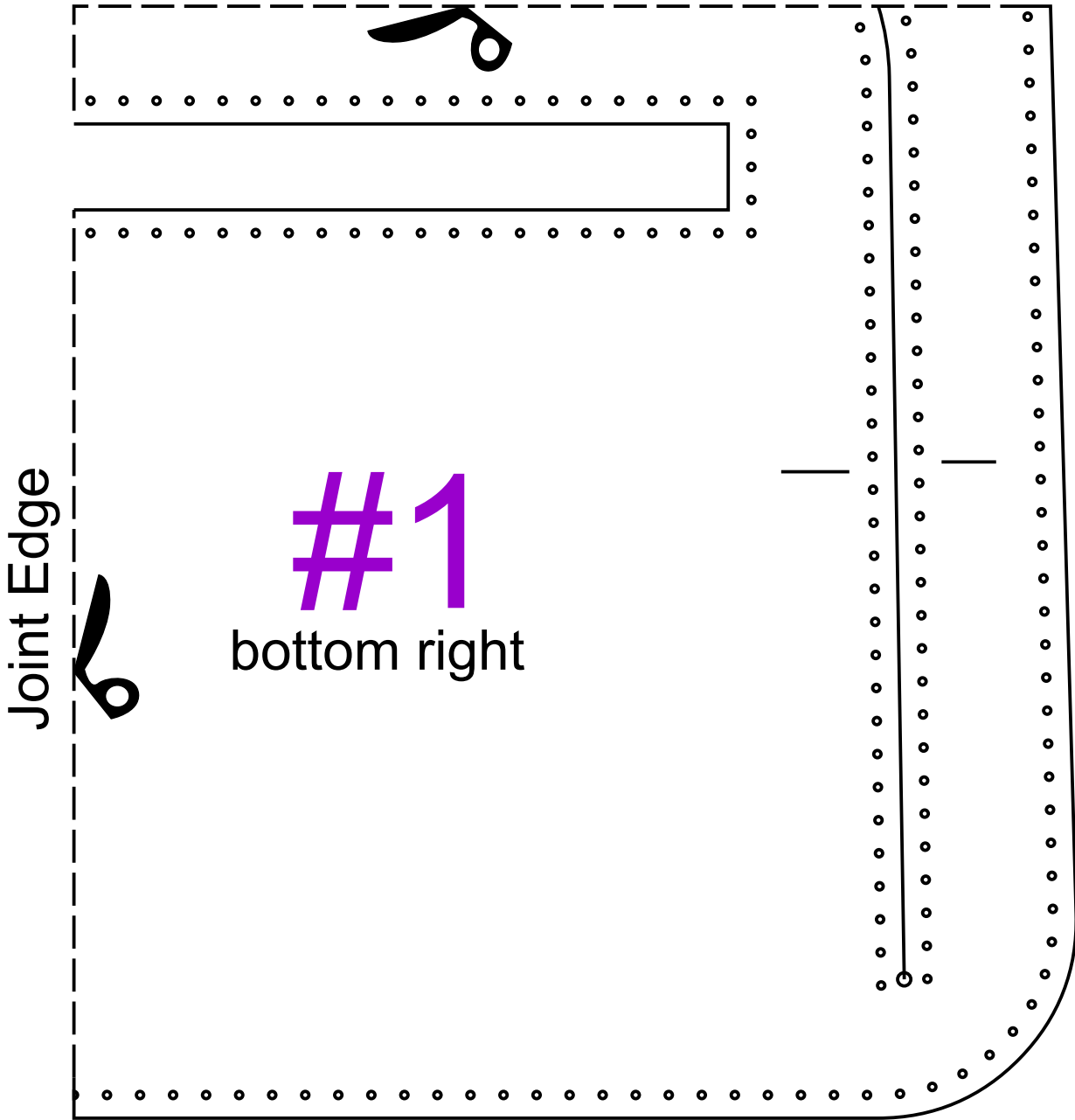
#1
bottom left

Joint Edge

240 mm

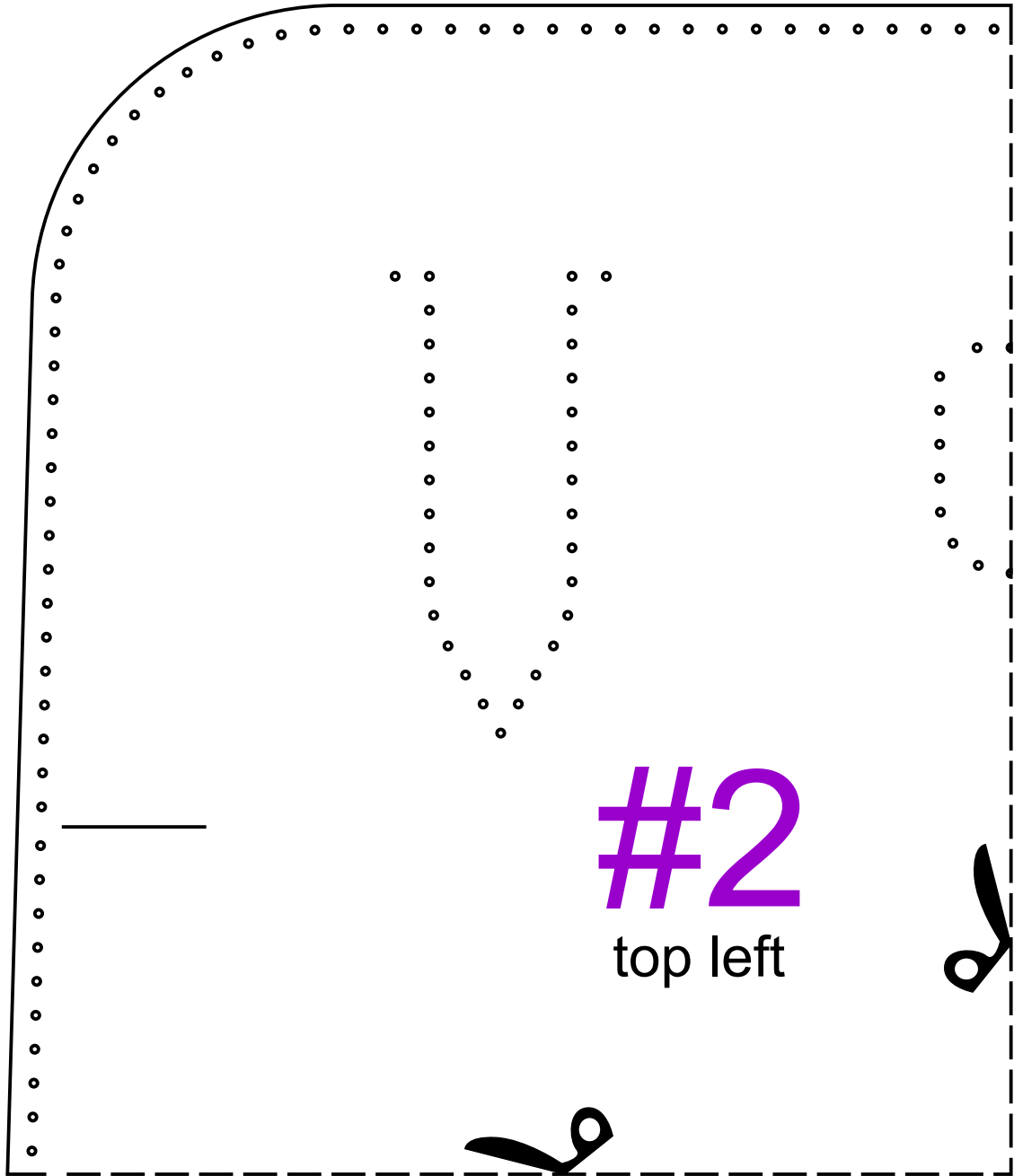
180 mm

Joint Edge



240 mm

180 mm



#2

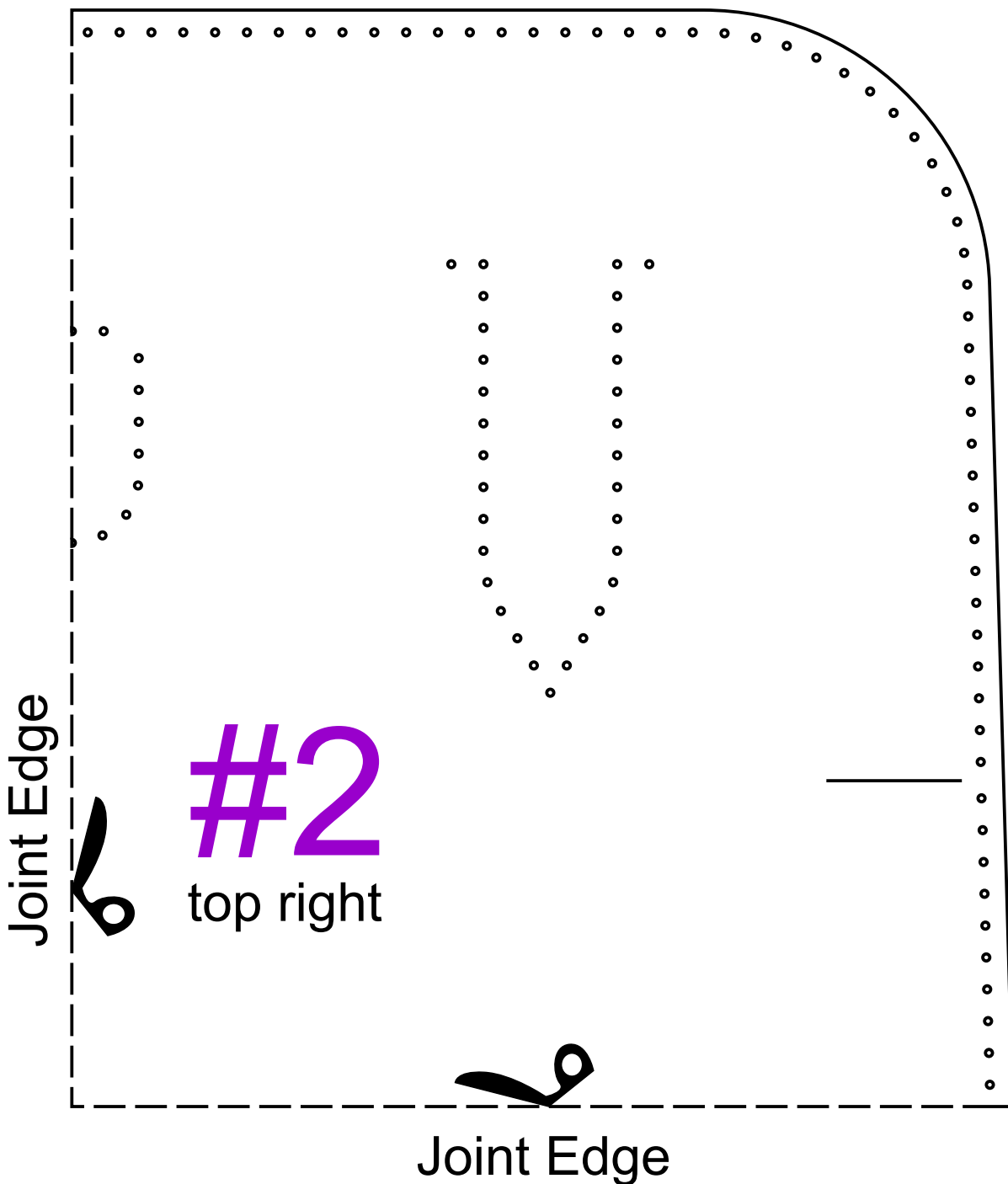
top left

Joint Edge

Joint Edge

240 mm

180 mm



Joint Edge

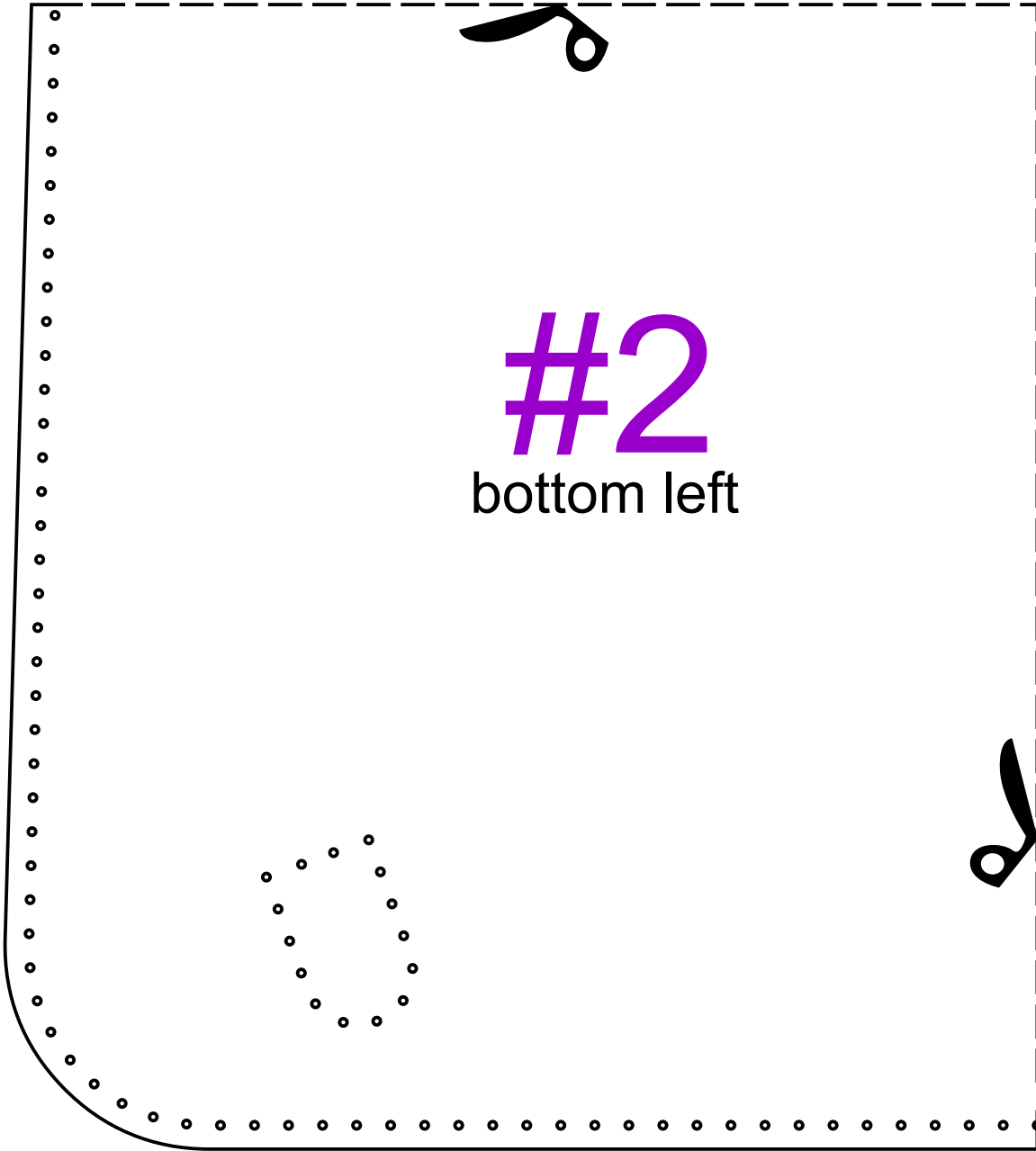
#2
top right

Joint Edge

240 mm

180 mm

Joint Edge



#2
bottom left

Joint Edge

240 mm

180 mm

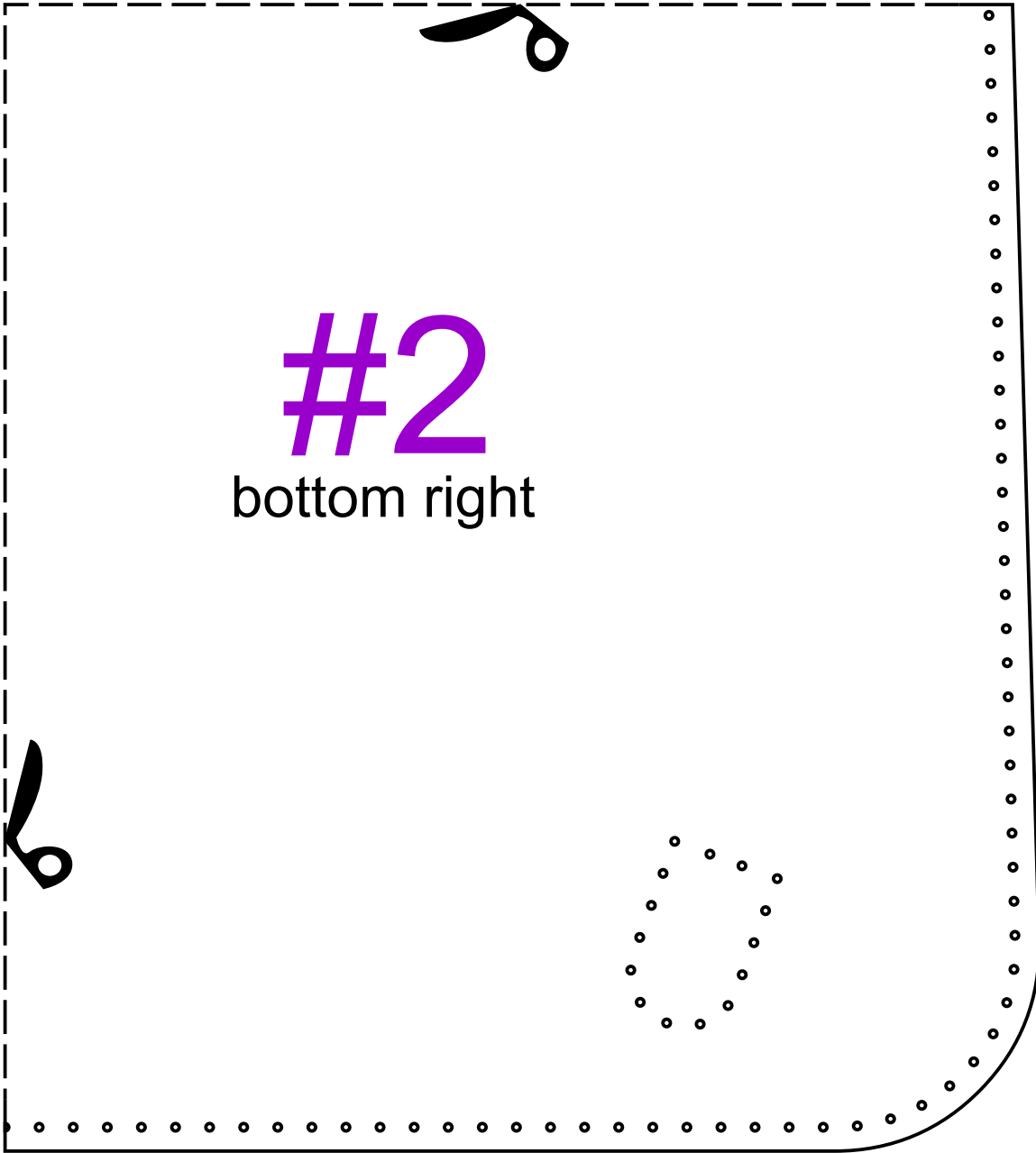
Joint Edge



#2

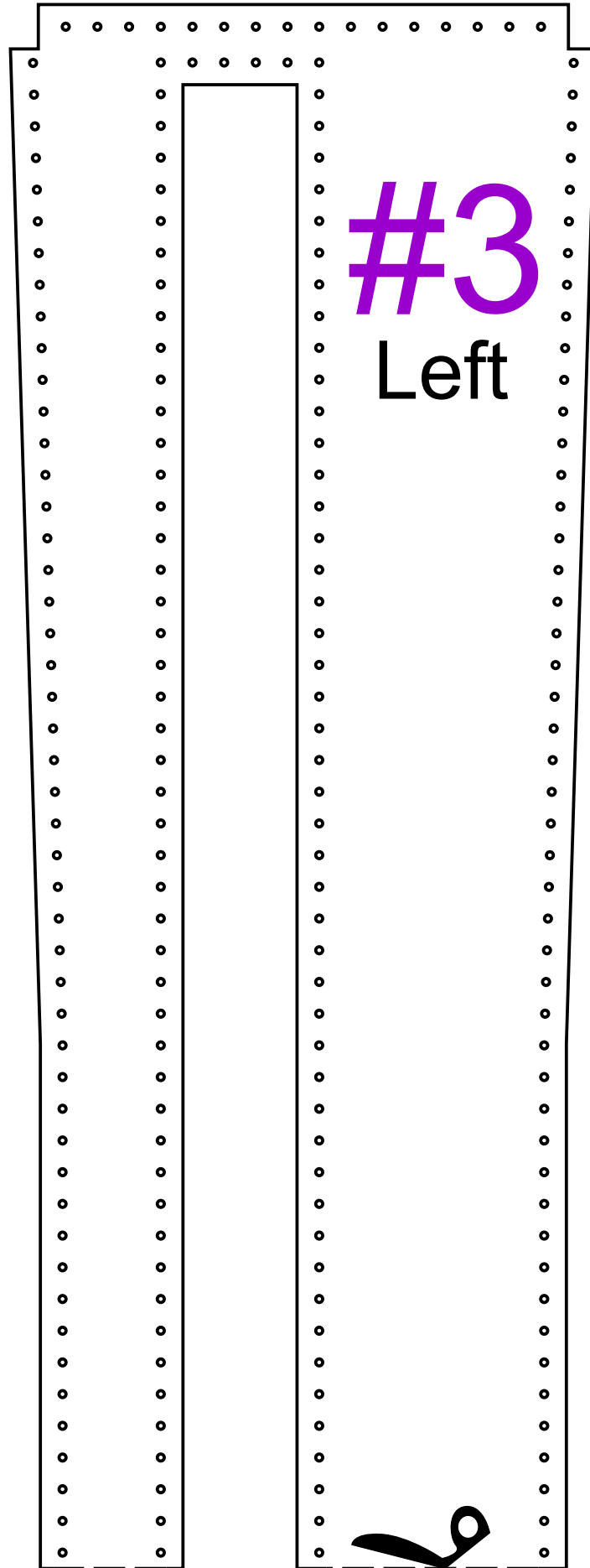
bottom right

Joint Edge



240 mm

180 mm



#3

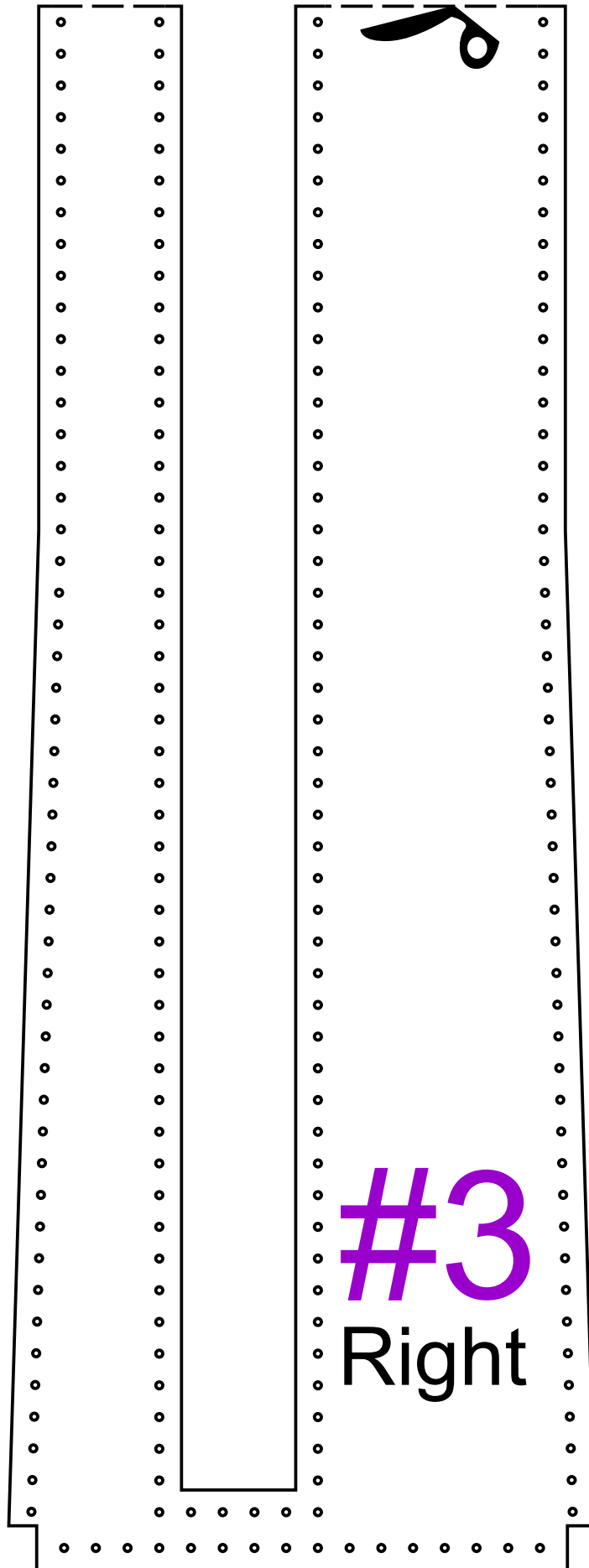
Left

Joint Edge

240 mm

180 mm

Joint Edge

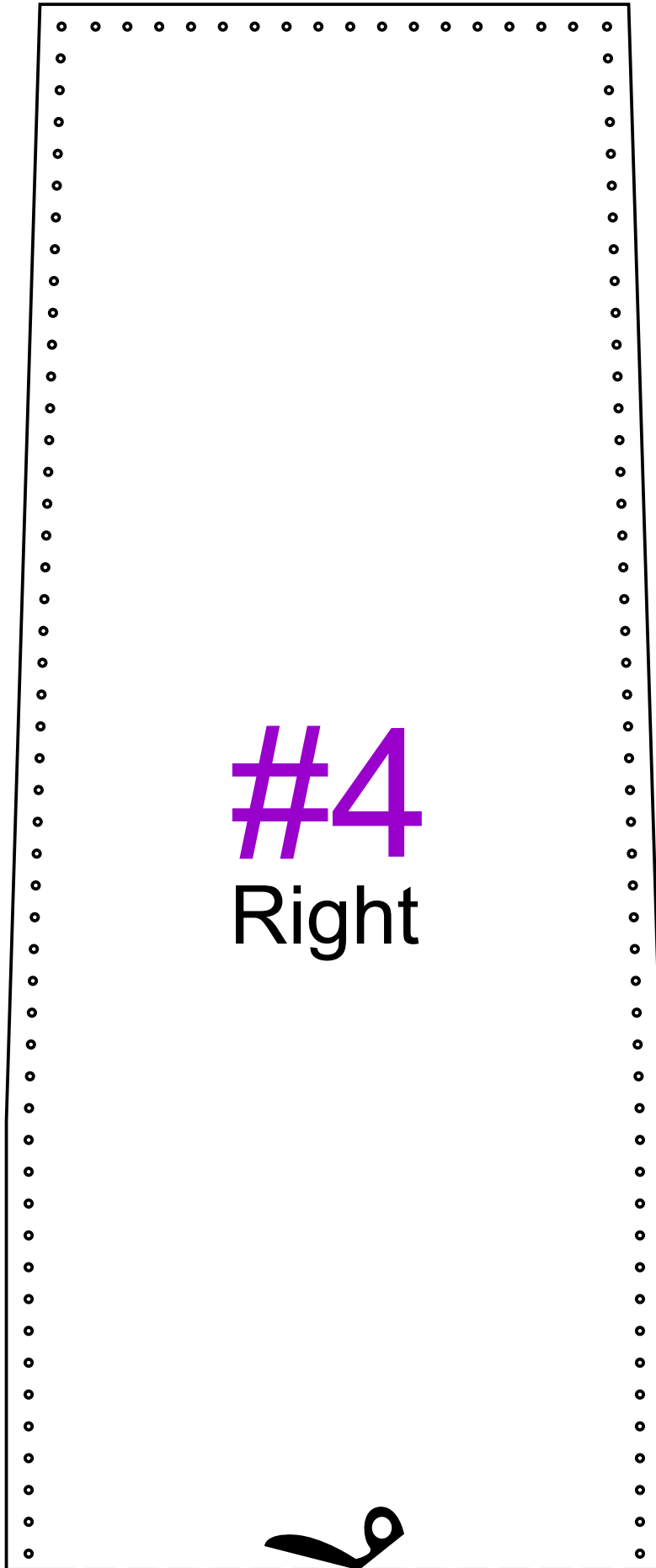


#3
Right



240 mm

180 mm

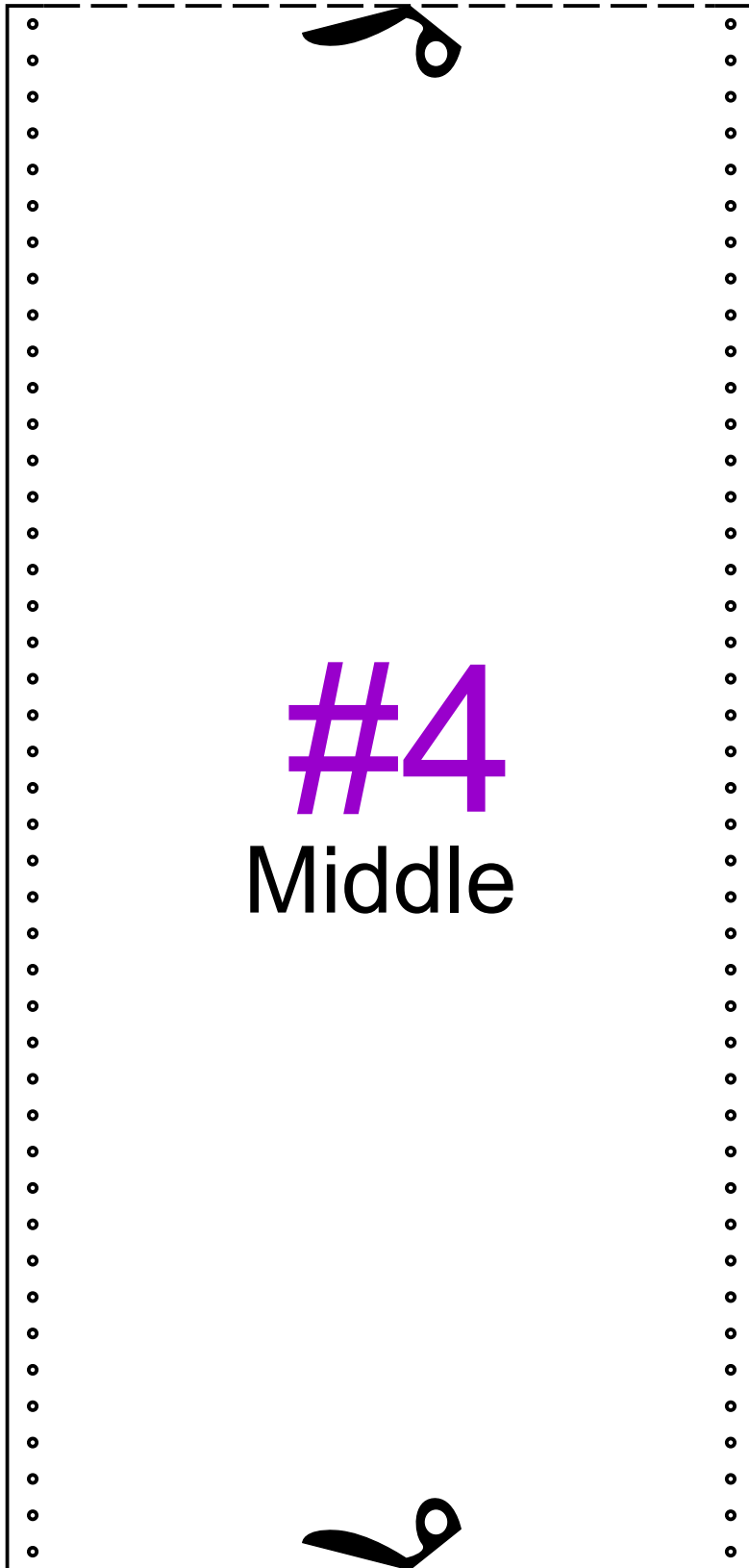


240 mm

180 mm

Joint Edge

Joint Edge

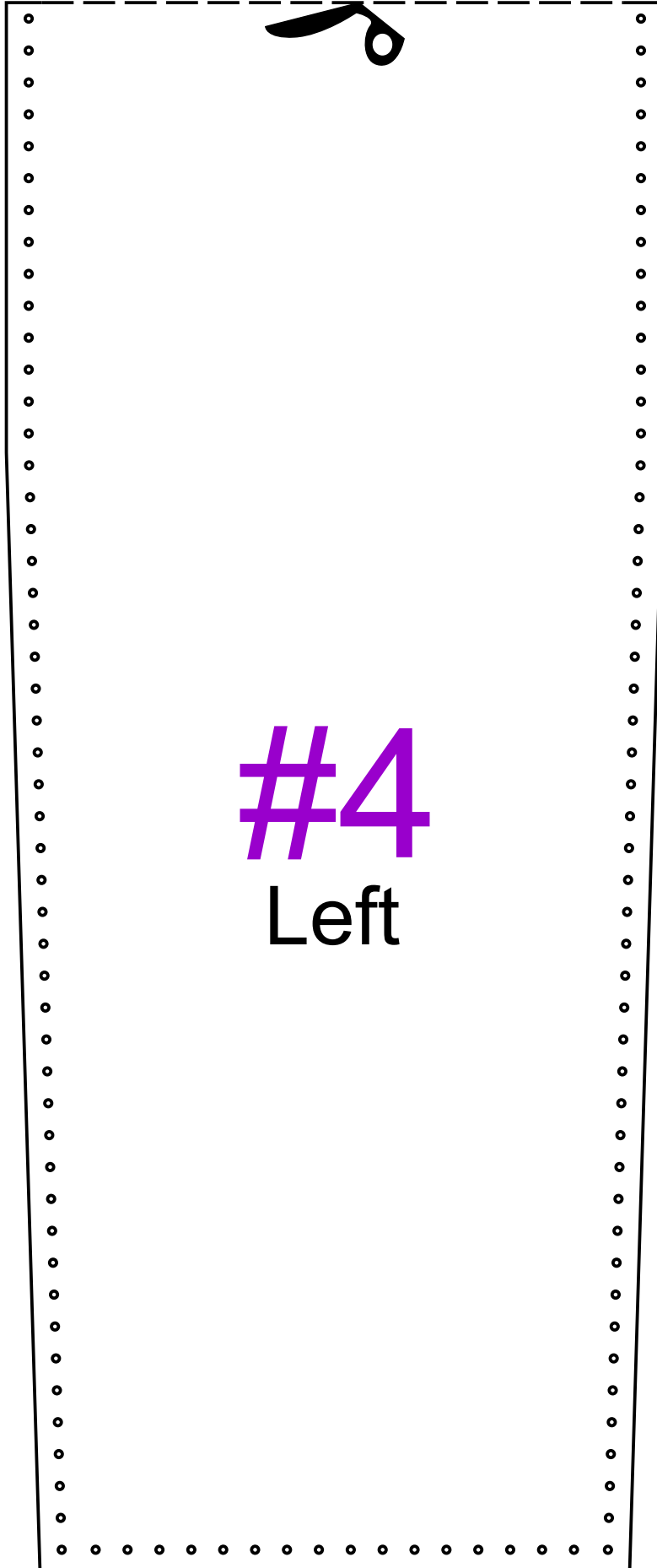


Joint Edge

240 mm

180 mm

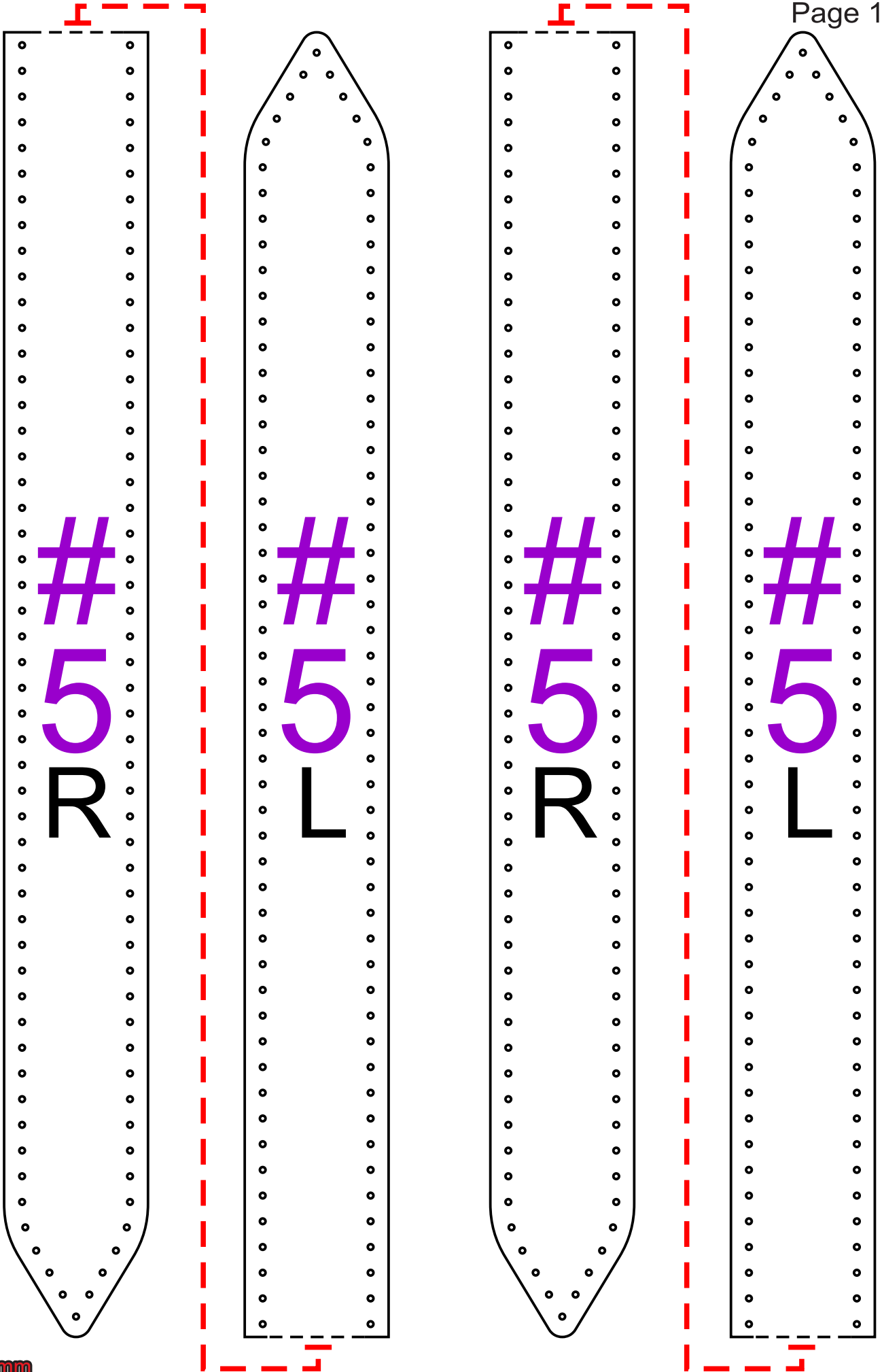
Joint Edge



#4
Left

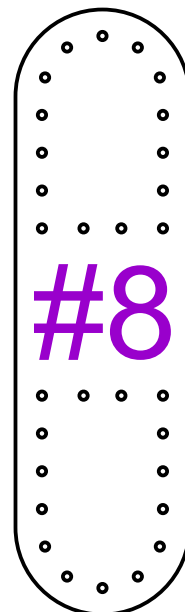
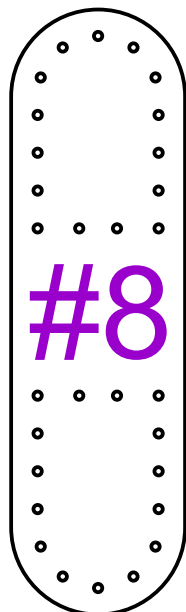
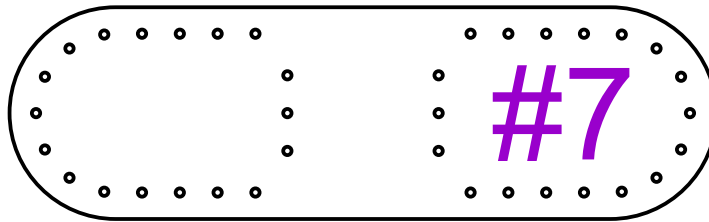
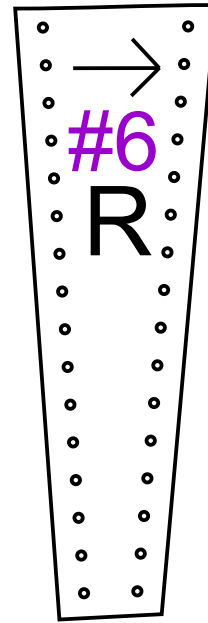
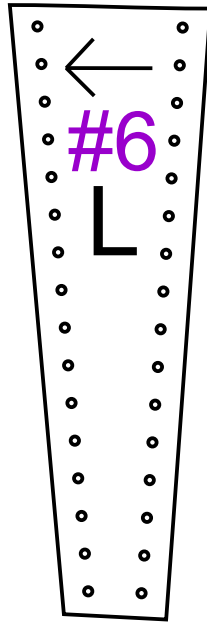
240 mm

180 mm



240 mm

180 mm



240 mm

180 mm



Joint Edge

Joint Edge

240 mm

180 mm



240 mm

180 mm

Joint Edge



#9
Lining

Don't Cut from leather



Joint Edge

240 mm

180 mm

Joint Edge



Joint Edge



#9
Lining

Don't Cut from leather

240 mm

180 mm



Joint Edge

Joint Edge

240 mm

180 mm

Joint Edge



Joint Edge

240 mm

180 mm

Joint Edge



Joint Edge

#10
Lining

Don't Cut from leather

240 mm

180 mm

Joint Edge



Joint Edge



#10
Lining

Don't Cut from leather



240 mm

180 mm



