



LET'S GO!

1



PRINT THE PATTERN

- Open your pattern in Adobe Acrobat Reader.
Set up options of your printer on A4 paper with 0 margins.
- Every page has a measure - check does it fit.
- Every printed page **MUST HAVE** a border around!
If doesn't - move paper left/ right and print again

2



FOLLOW VIDEO INSTRUCTIONS

- Video tutorial:
available on Tuesday 22/11 on Creative Awl youtube
- Cutting patterns:
https://www.youtube.com/watch?v=2TNUI_TIk64

3



GIVE A SMILE TO OTHER PEOPLE !

- Give a ready product to you family or friend.
Give them a smile :)))
- Also Check www.CreativeAwl.com for more patterns

4



JOIN OUR FB GROUP

- Go there to share your work. Also get more DIY&ideas.
We will support you & answer all questions.

YOU NEED

MATERIALS

- **1.6 SQFT (0.15 SQM) LEATHER (PREFERABLE ABOUT 5 OZ), WE USED VEG TANNED WAX FROM BADALASSI CARLO**
- **ZIPPER (41CM LONG)**
- **2 RIVETS**
- **SNAP / BUTTON**
- **WAXED THREAD**

TOOLS

- **SHARP KNIFE**
- **1.2 - 1.5 MM HOLE PUNCHER / PRICKING IRONS OR AWL**
- **HAMMER**
- **2 NEEDLES**
- **PAPER TAPE**
- **A HOME PRINTER**

SHARE YOUR WORK

[https://www.facebook.com/groups/](https://www.facebook.com/groups/CreativeAwlPatterns)

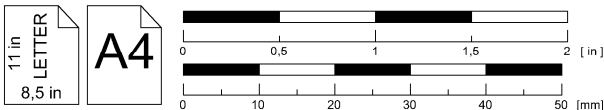
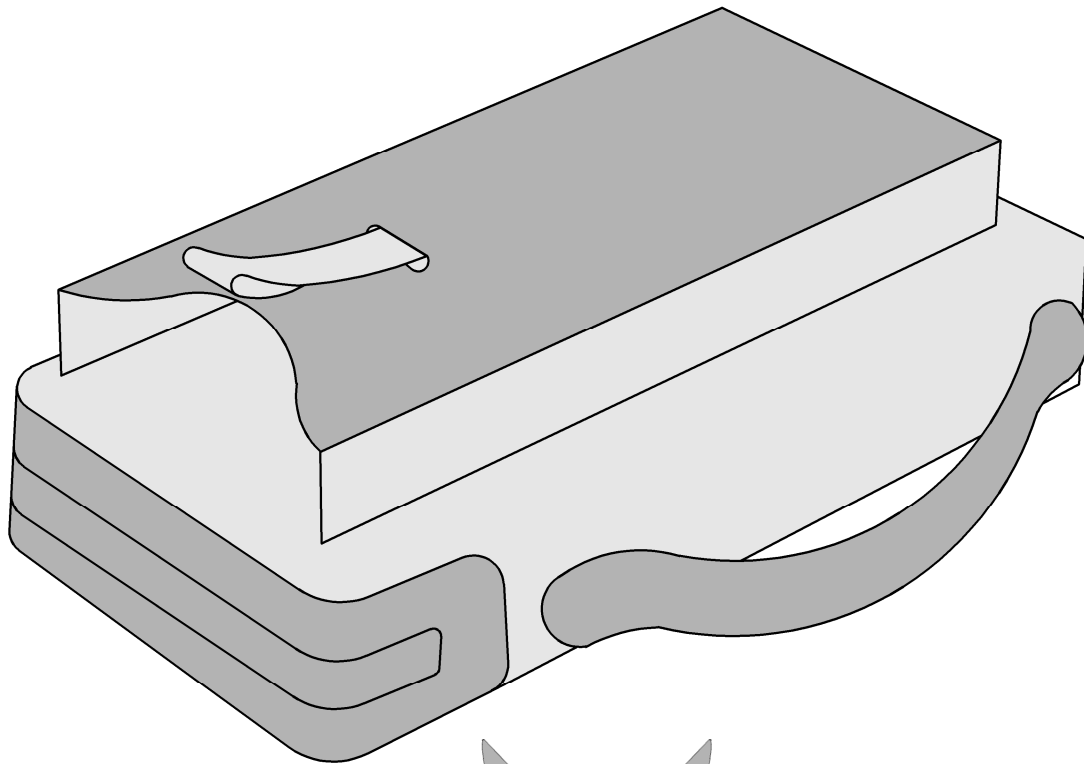
CreativeAwlPatterns

All in one case:

pages 4 - 10

-The number in the circle shows which holes are to be connected. Example: ①

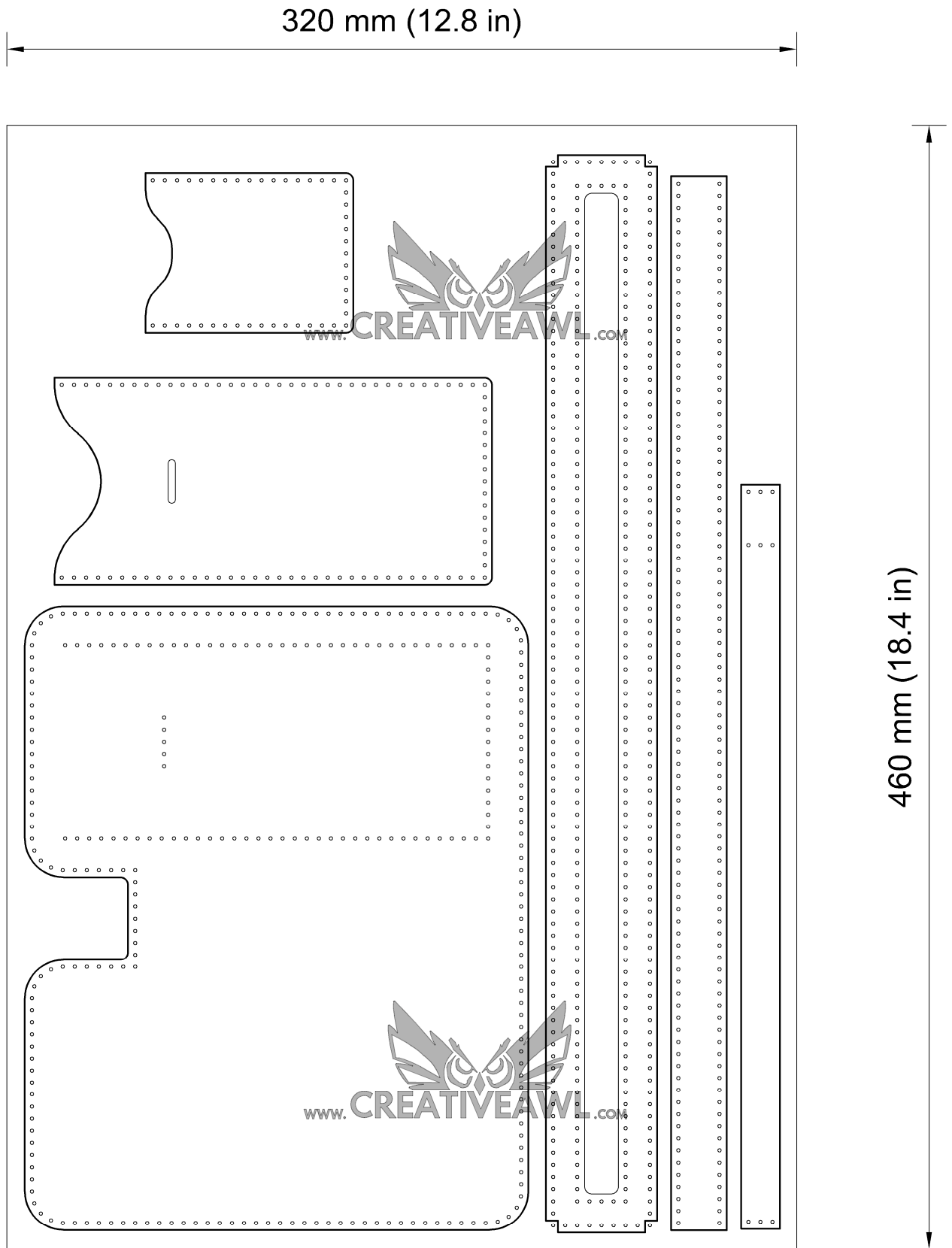
-Numbers 1, 2, 3 (...) without a circle indicate where the piece lies in the overview drawing.



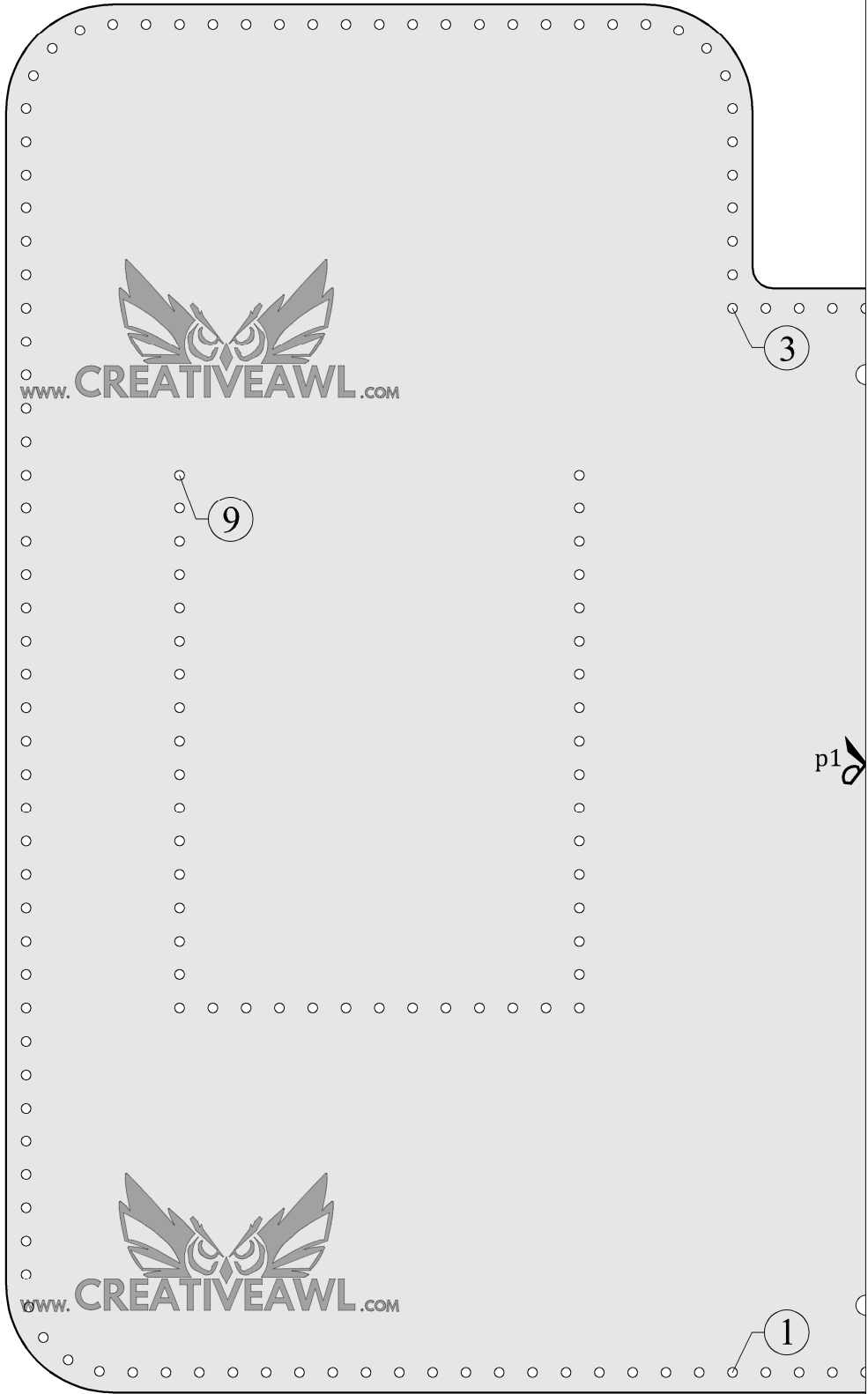
Sketch drawing

Leather needed for a all in one case:

about 0.15 m2

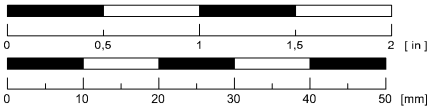


Sketch draving
Bill of materials

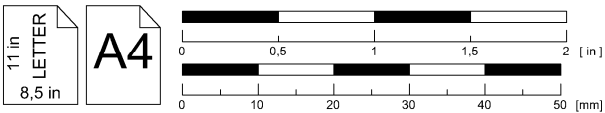
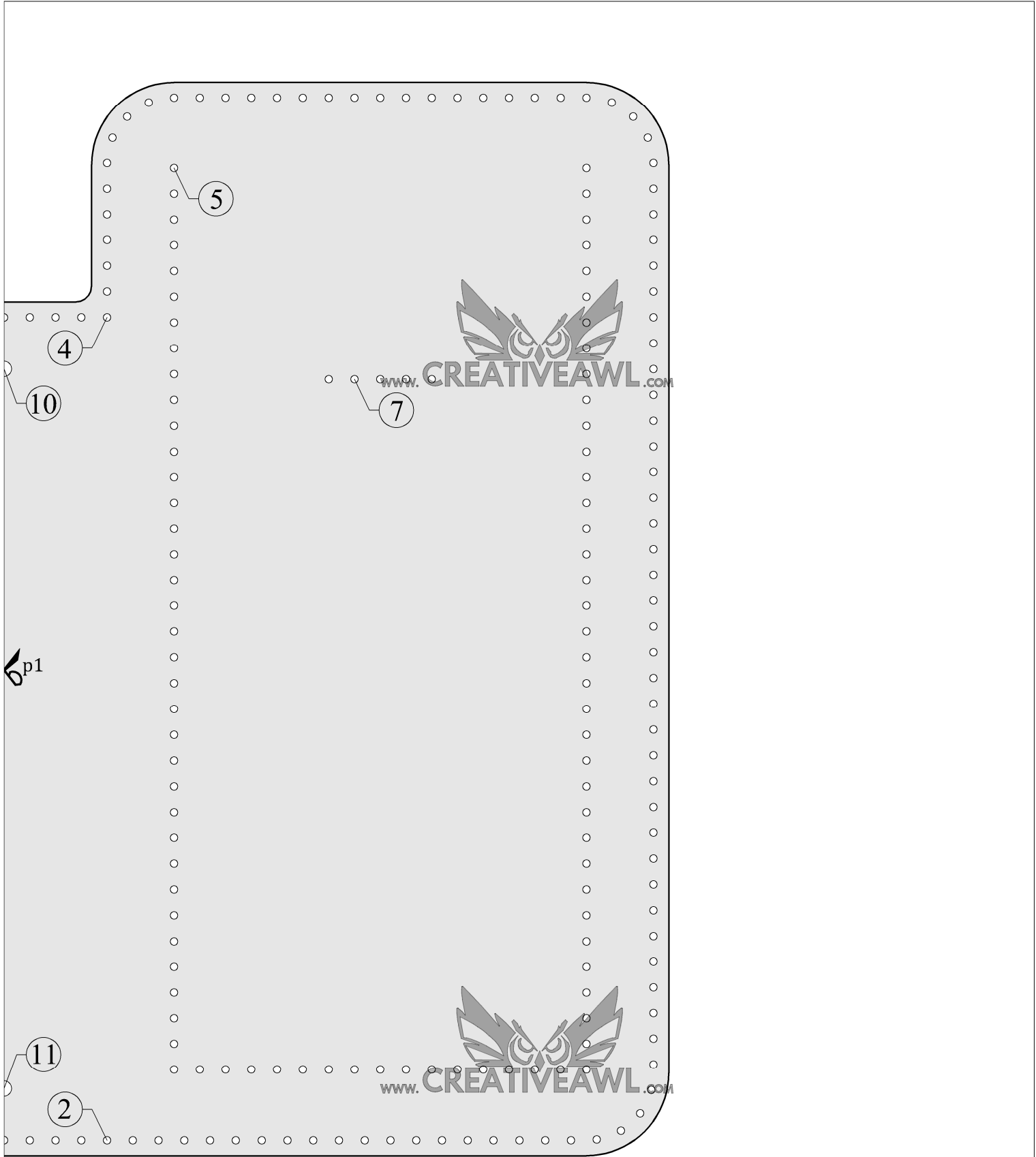


11 in
LETTER
8,5 in

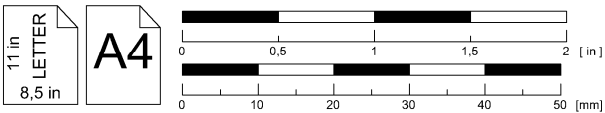
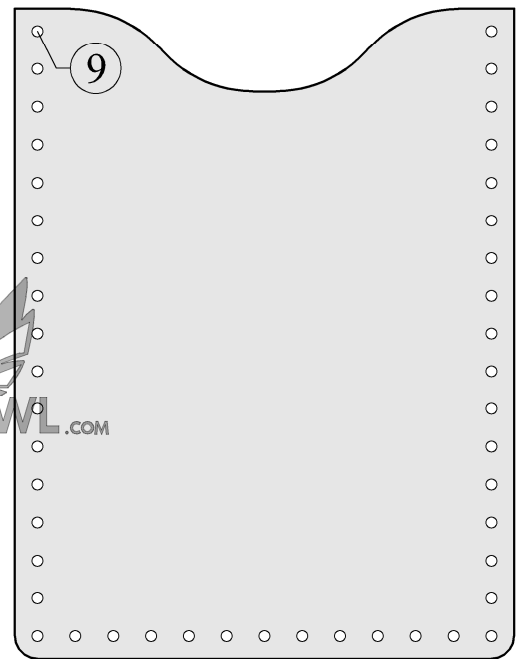
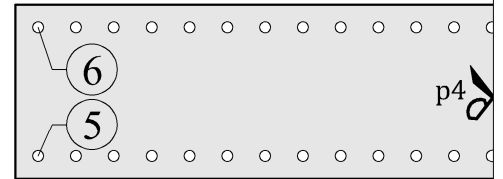
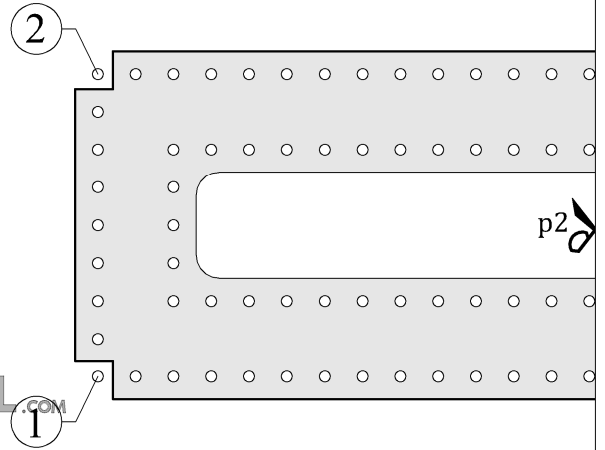
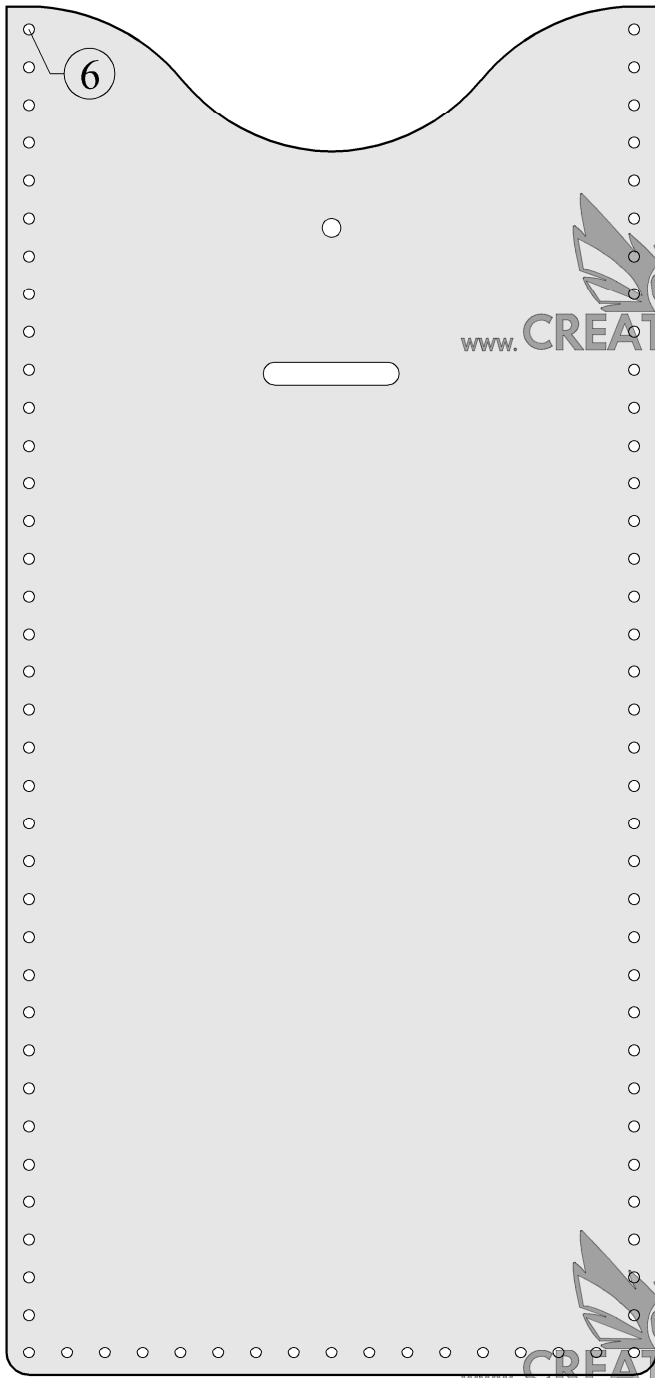
A4



All in one case

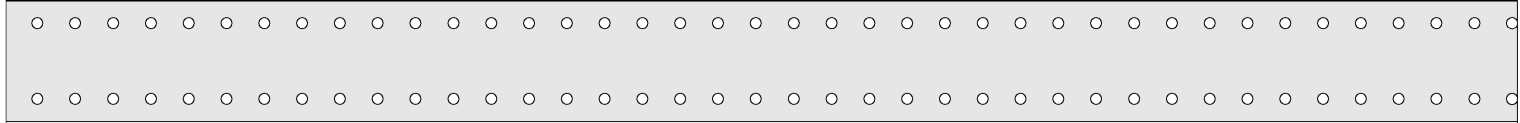


All in one case



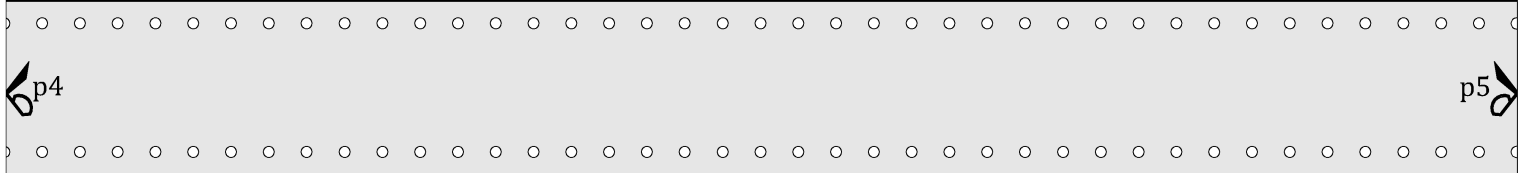
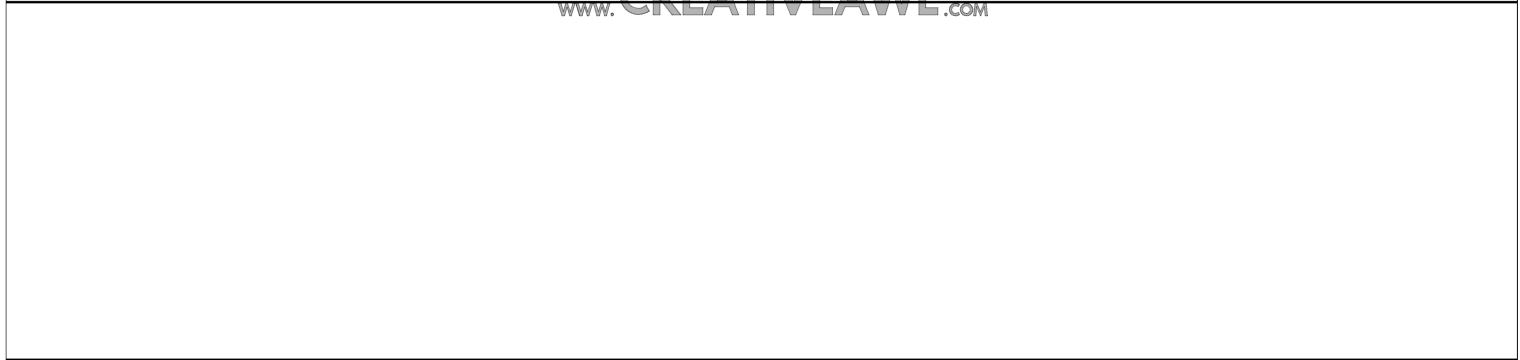
All in one case





p2

p3



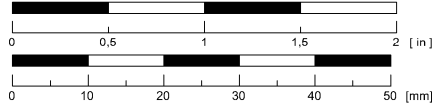
p4

p5

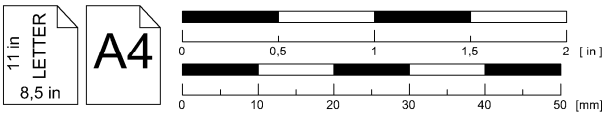
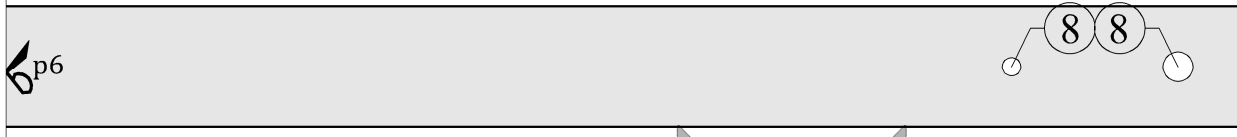
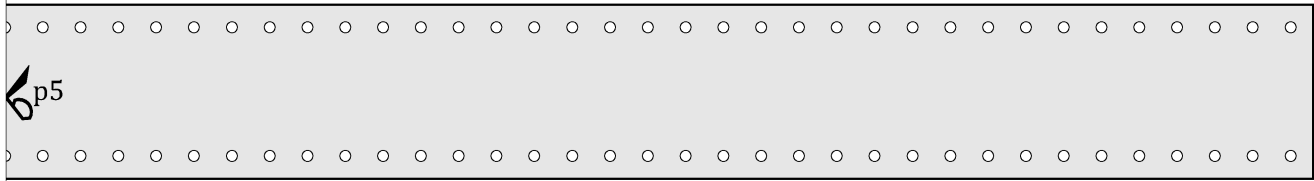
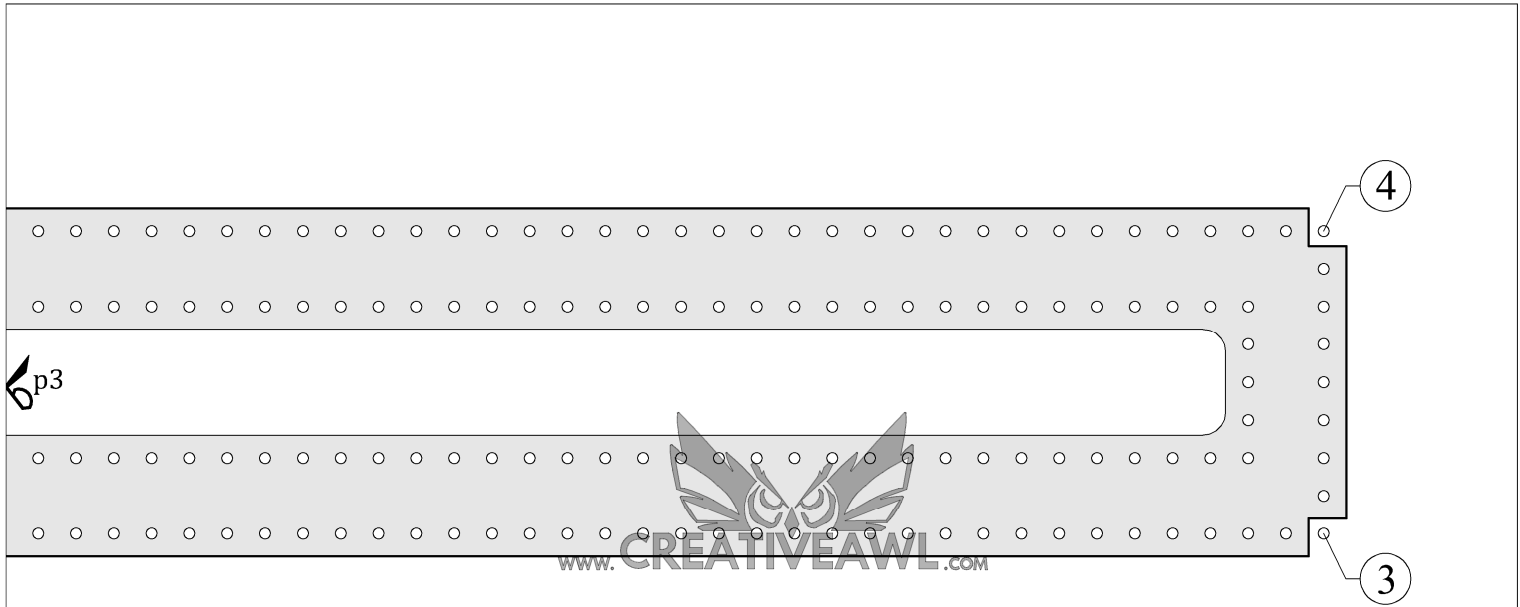


11 in
8,5 in

A4



All in one case



All in one case