



CREATIVE AWL

**JULIET
BAG**

PREPARED BY:

Patryk Ku,
www.CreativeAwl.com



**PLEASE
READ!**

If it wasn't for your support, this pattern wouldn't have come into being, thanks! If you already post pictures of your bag in the social media, I would be invariably glad if you would mention the author. I also encourage you to share your work on our facebook group.

All rights reserved. No pattern content may be shared or reproduced. If you would like to share pictures of your, please recommend our facebook group or <https://www.creativeawl.com>

You can sell items based on my patterns without any restriction.

Thank you and have fun!
Patryk

LET'S GO:

01

PRINT THE PATTERN

- Open your pattern in Adobe Acrobat Reader. Set up options of your printer on A4 paper with 0 margins (if needed).
- Every page has a measure - check does it fit.
- Every printed page **MUST HAVE** a border around! If doesn't - move paper left/ right and print again and check the settings

02

VIDEO TUTORIAL:

[HTTPS://YOUTU.BE/XGQBVHY1QVE](https://youtu.be/XGQBVHY1QVE)

Cutting patterns:

https://youtu.be/2TNUI_TIk64

03

GIVE A SMILE TO OTHER PEOPLE!

Give a ready product to you family or freind. Give them a smile :)))

Also Check www.CreativeAwl.com for more patterns

04

JOIN OUR FB GROUP

Go there to share your work. Also get more DIY&ideas. We will support you & answer all questions.

<https://www.facebook.com/groups/CreativeAwlPatterns>

YOU NEED

TOOLS

- sharp knife
- 1-1,5 and 3, 4, 8, 10mm hole punchers
- hammer
- 2 needles
- paper tape
- a home printer

MATERIALS

- 4.3 sqft (0,4 sqm) preferable 4-5 oz leather
- 0,8mm waxed thread
- few rivets
- 6 x 20mm d-rings
- zipper



SHARE YOUR WORK

<https://www.facebook.com/groups/CreativeAwlPatterns>

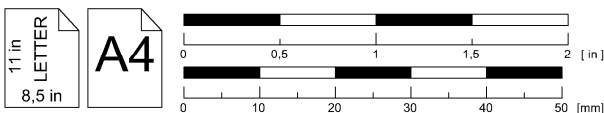
If you got ANY problem,- don't be shy to ask directly on Etsy or facebook

Juliet bag:

pages 5 - 21

-The number in the circle shows which holes are to be connected. Example: ①

-Numbers 1, 2, 3 (...) without a circle indicate where the piece lies in the overview drawing.

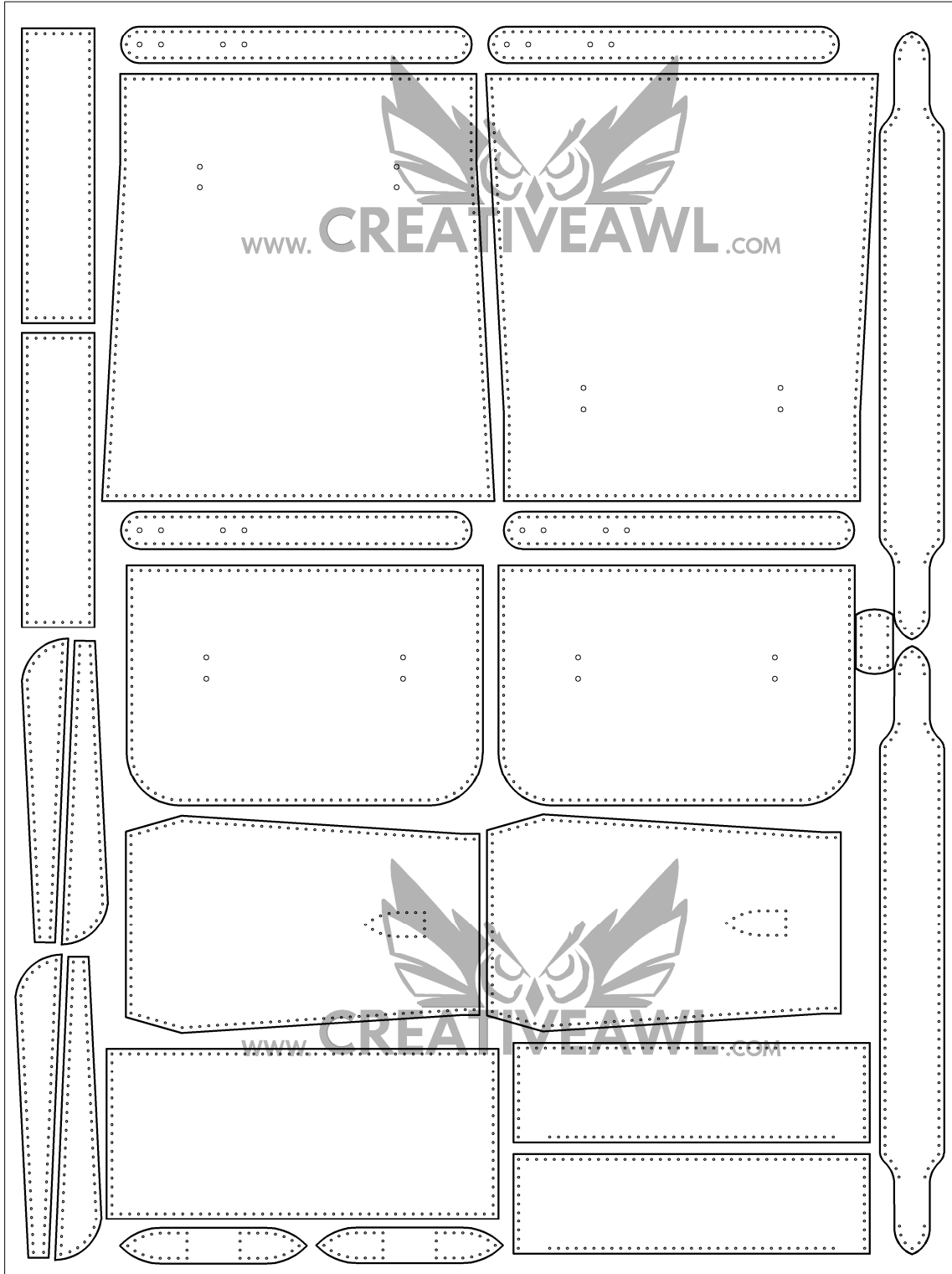


Sketch drawing

Leather needed for a Juliet bag:

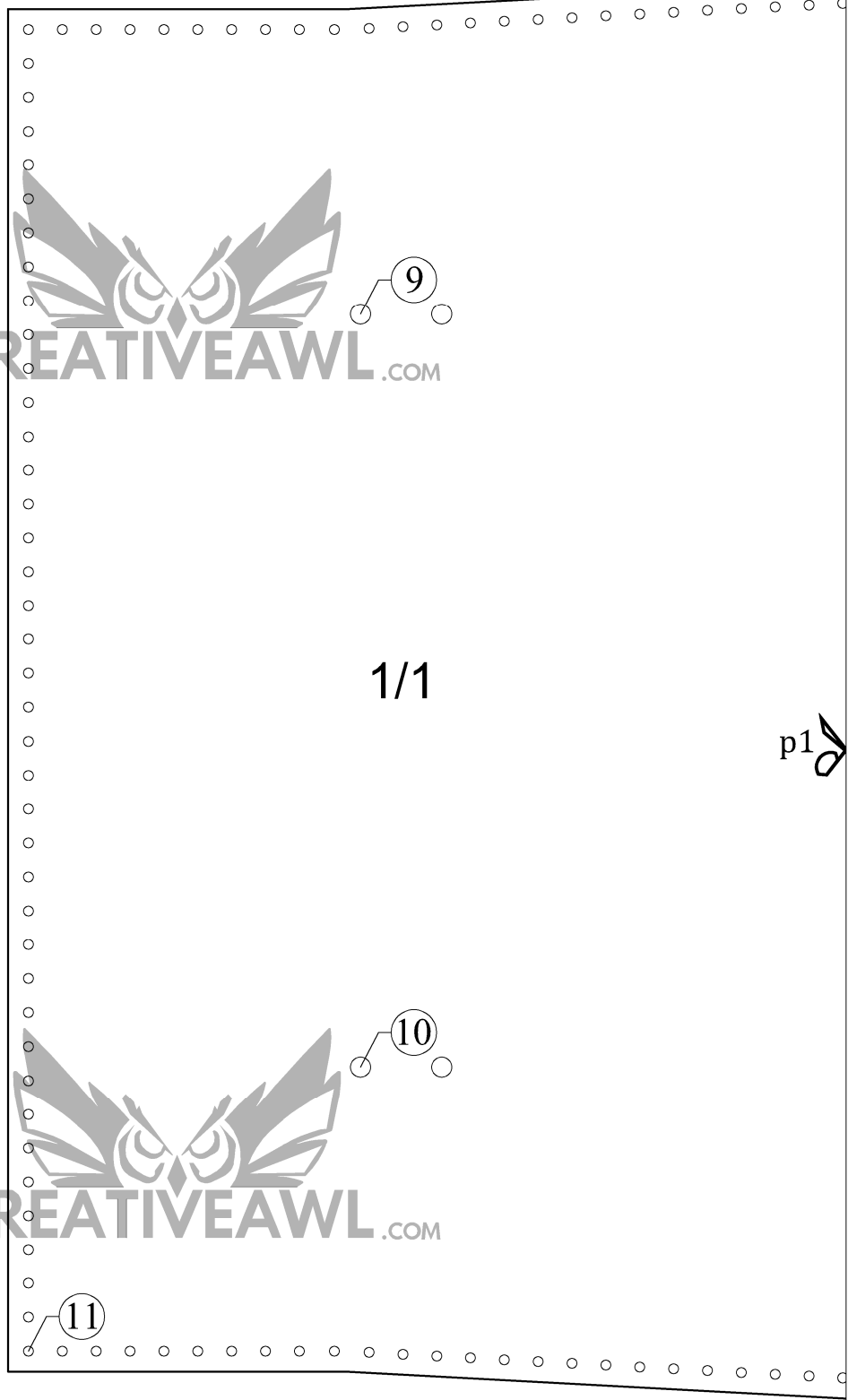
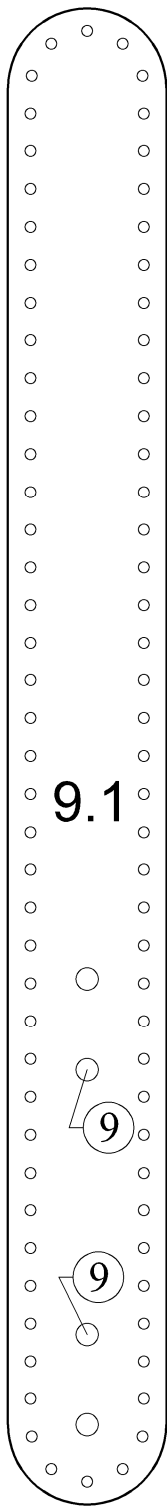
about 0,40 m2

540 mm (21.6 in)



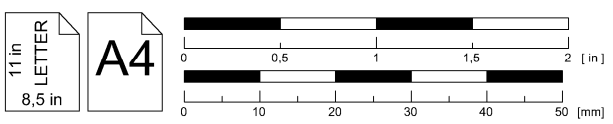
720 mm (28.8 in)

Sketch drawing
Bill of materials

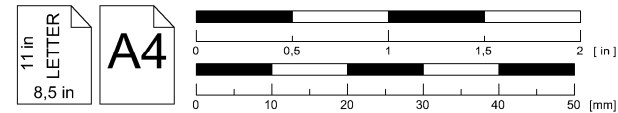
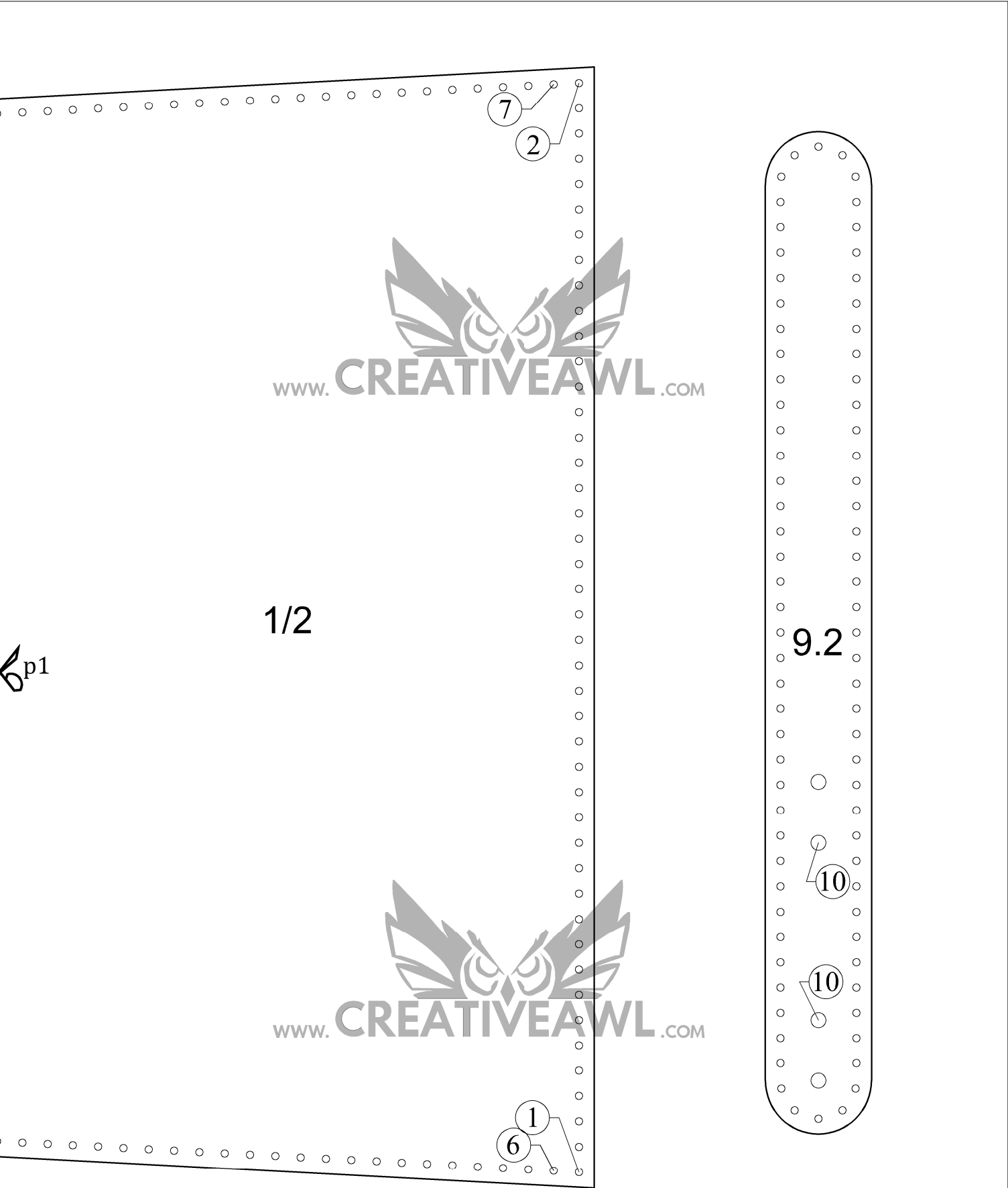


1/1

p1



Juliet bag: front and front components

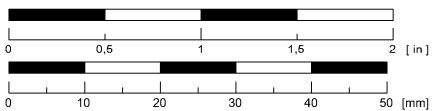


Juliet bag: front and front components

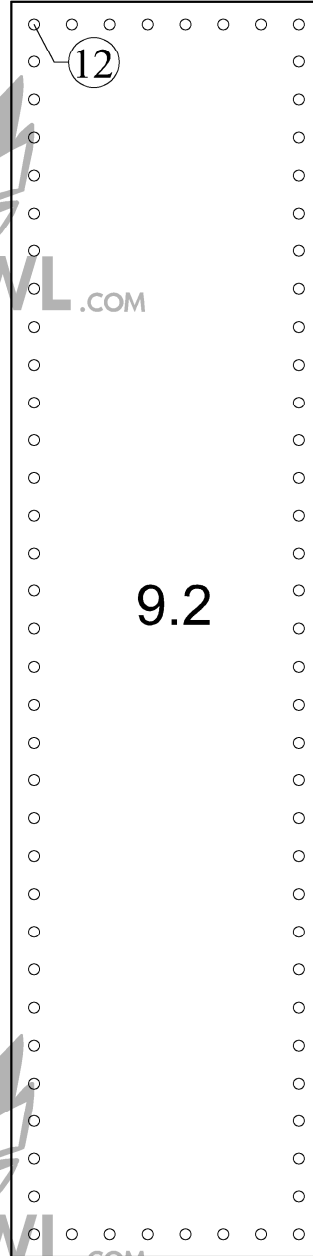
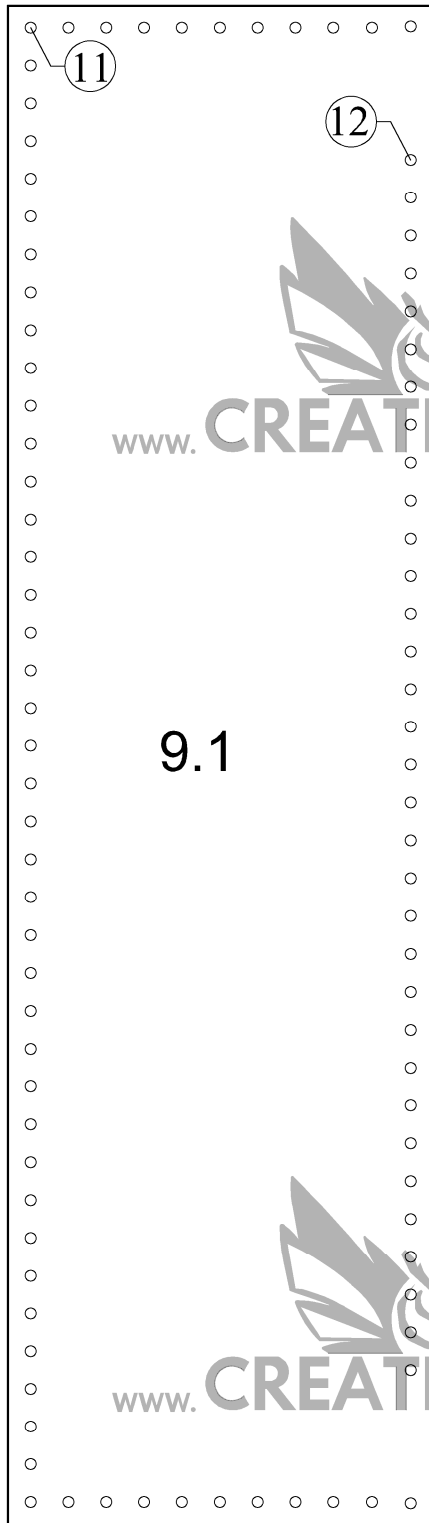


11 in
LETTER
8,5 in

A4

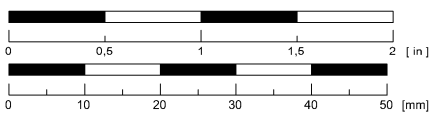


Juliet bag: front
components



11 in
LETTER
8,5 in

A4



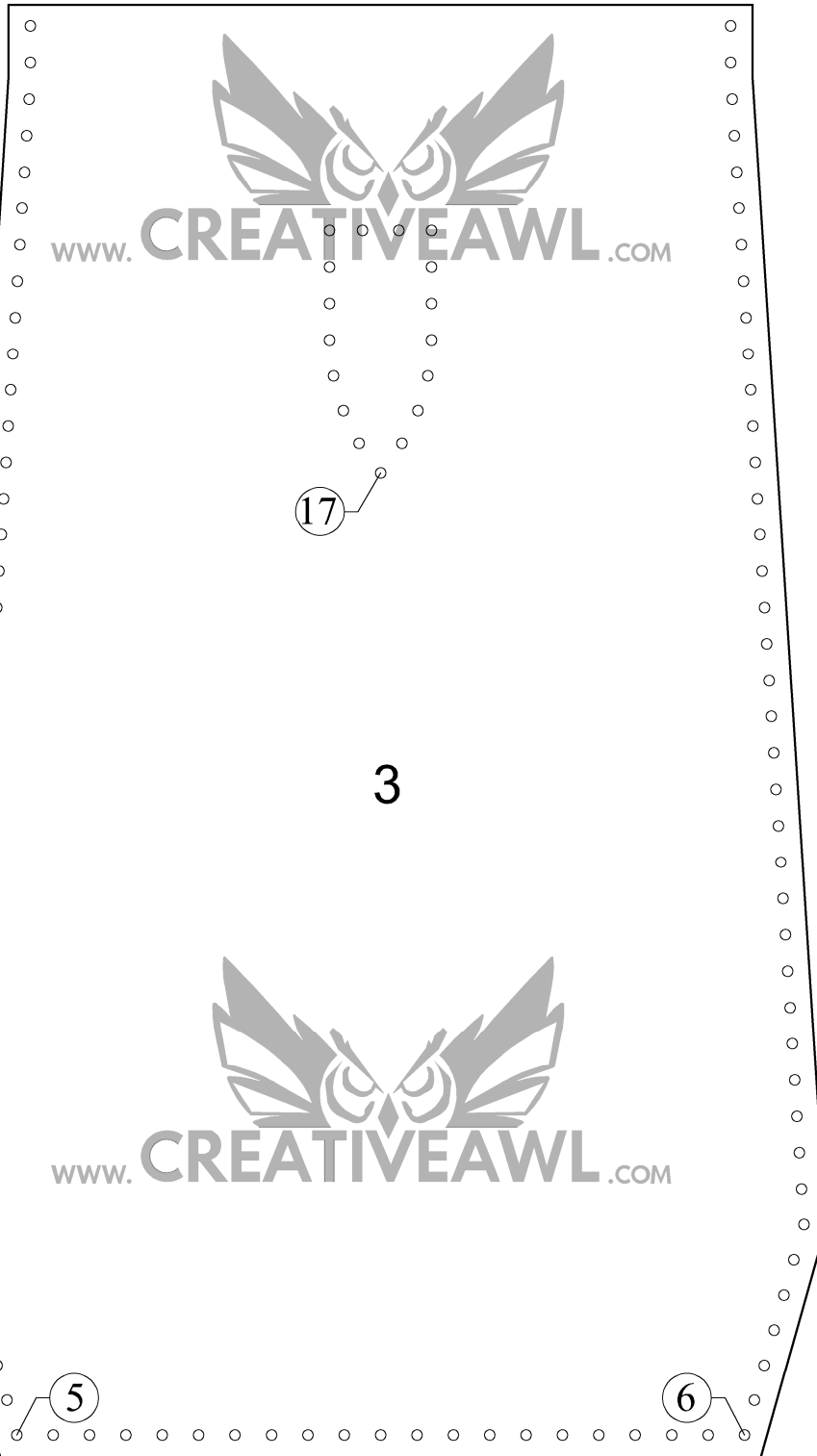
Juliet bag: front
components



3.1

17

17

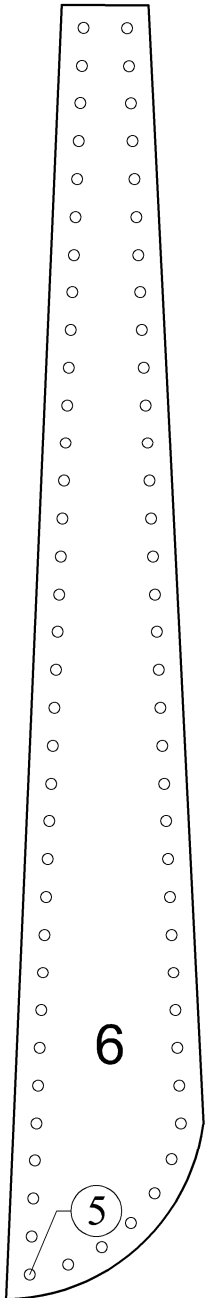


17

3

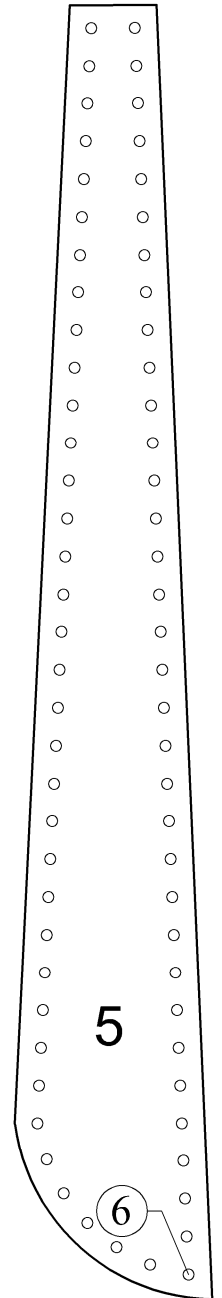
www.CREATIVEAWL.COM

www.CREATIVEAWL.COM



6

5

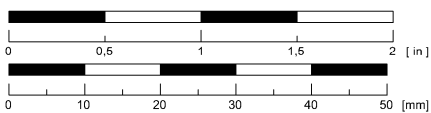


5

6

11 in
LETTER
8,5 in

A4

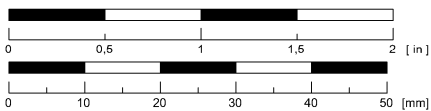


Juliet bag: side and components



11 in
LETTER
8,5 in

A4



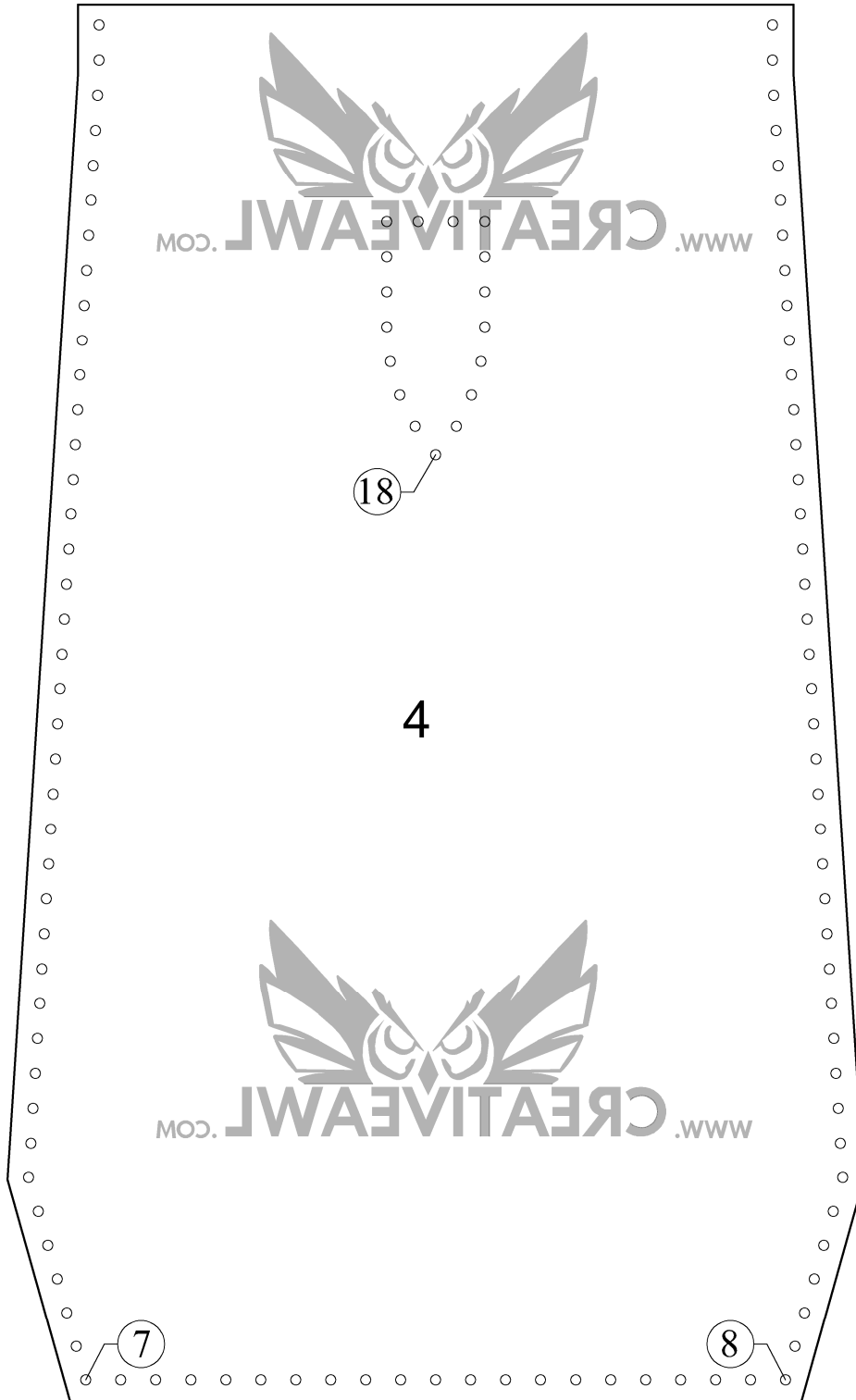
Juliet bag: bottom



4.1

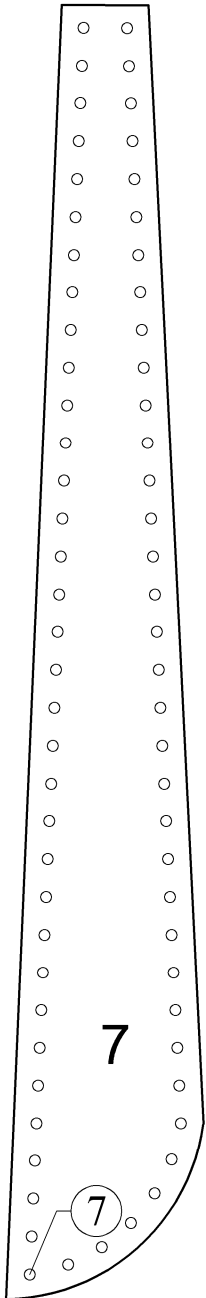
18

18



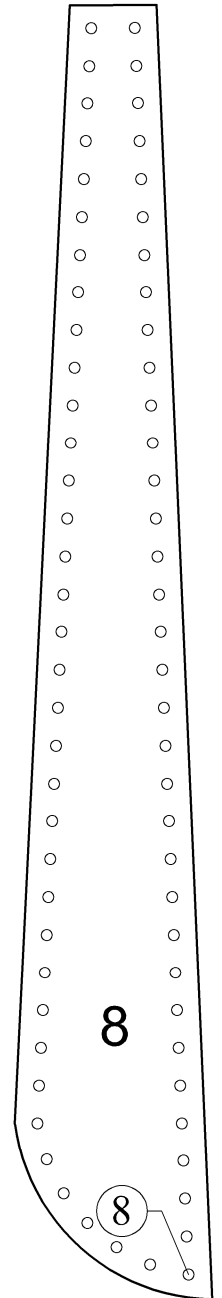
4

18



7

7

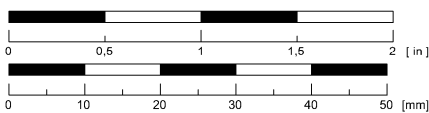


8

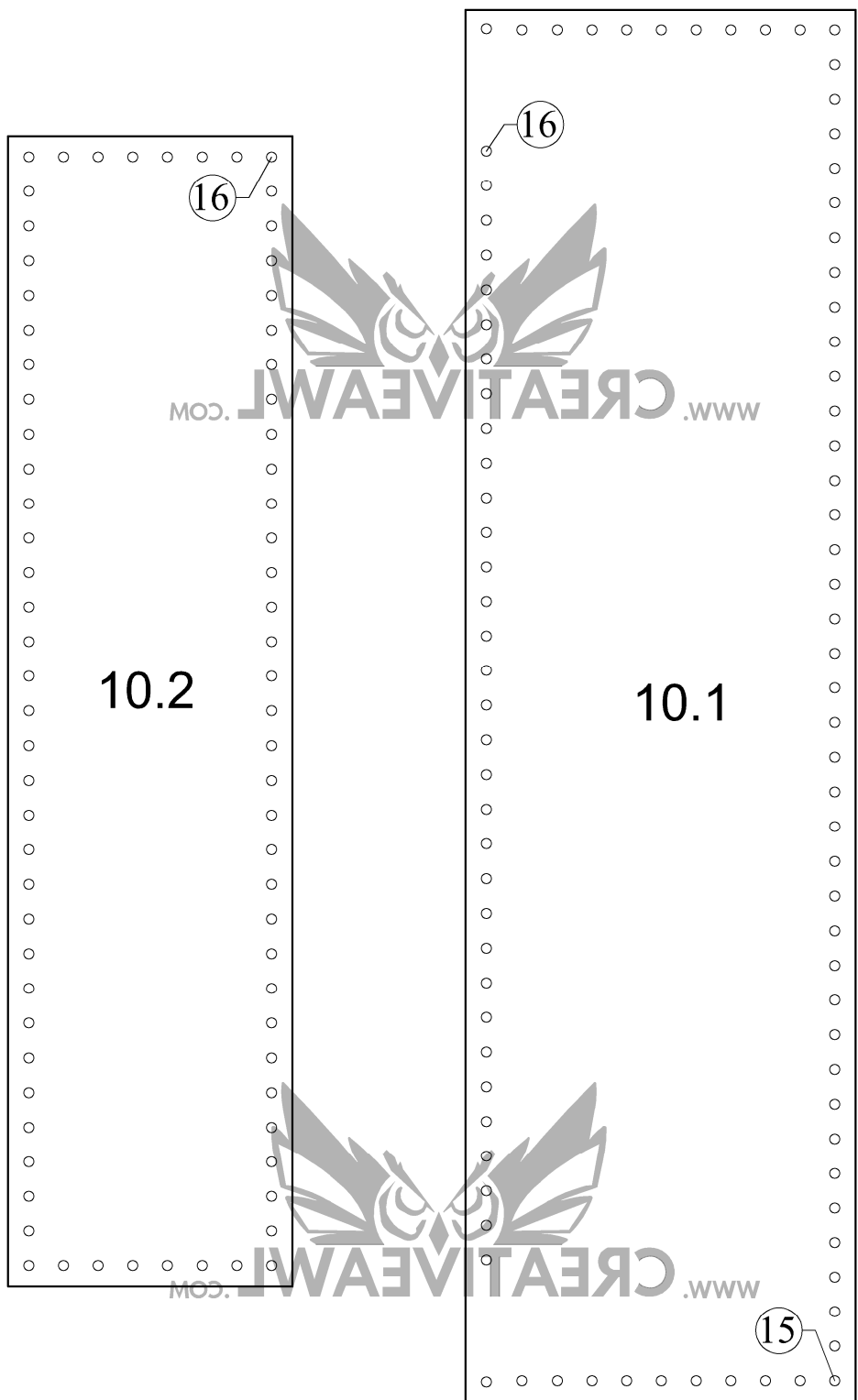
8

11 in
LETTER
8,5 in

A4



Juliet bag: side and components



11 in
LETTER
8,5 in

A4

0 0,5 1 1,5 2 [in]

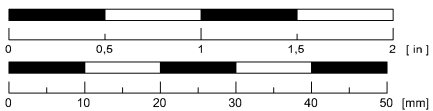
0 10 20 30 40 50 [mm]

Juliet bag: back components

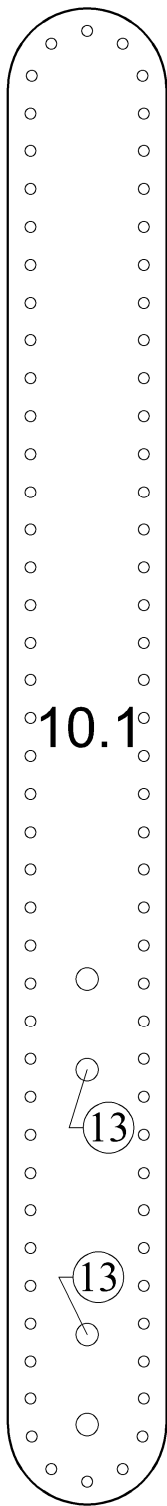


11 in
LETTER
8,5 in

A4



Juliet bag: back
components



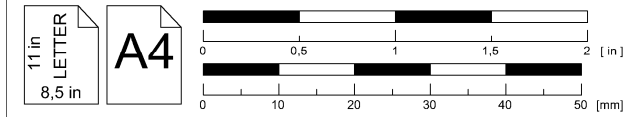
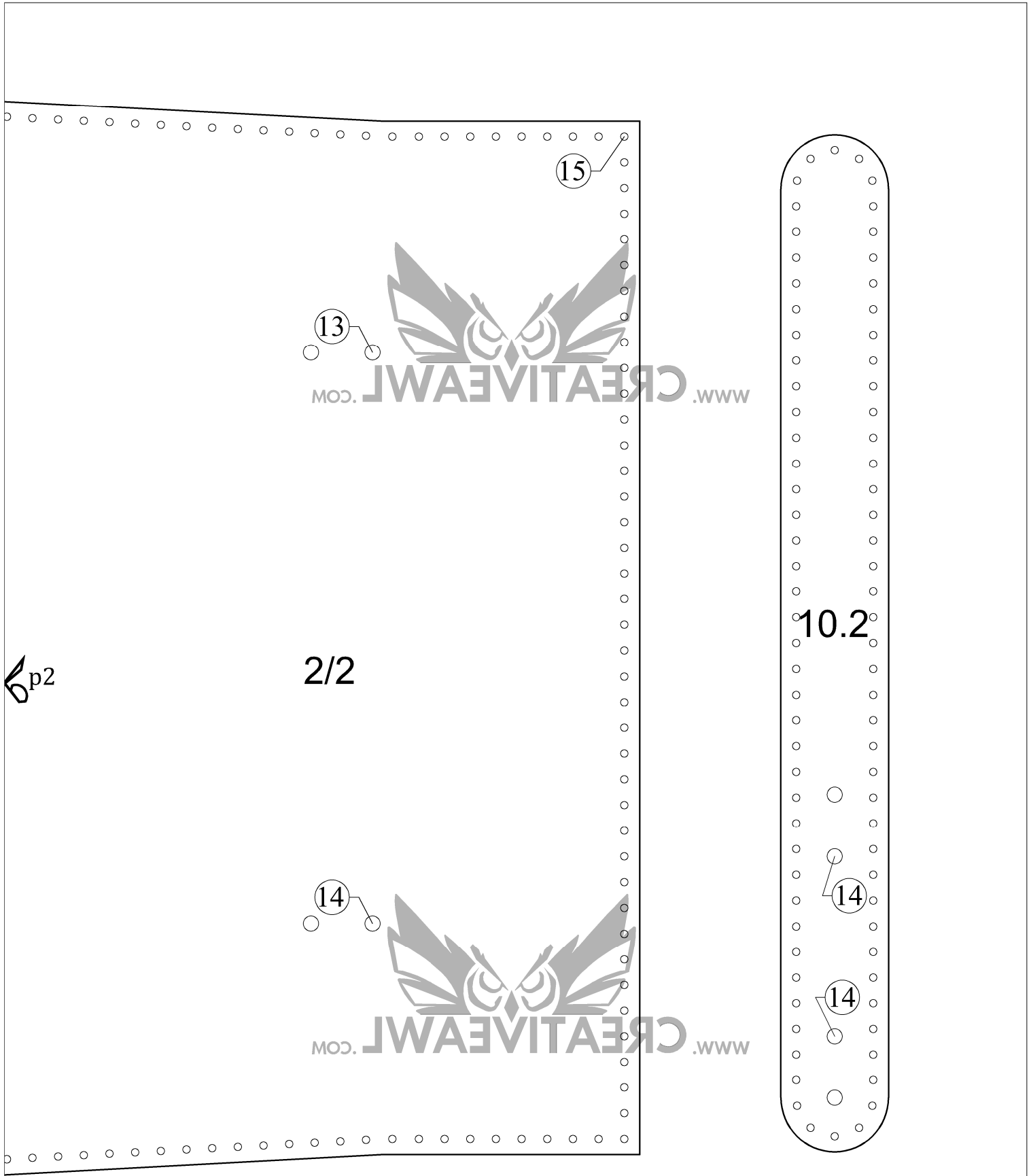
p2

11 in
LETTER
8,5 in

A4

0 0,5 1 1,5 2 [in]
0 10 20 30 40 50 [mm]

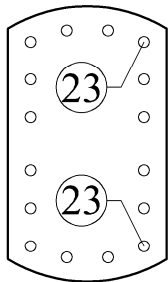
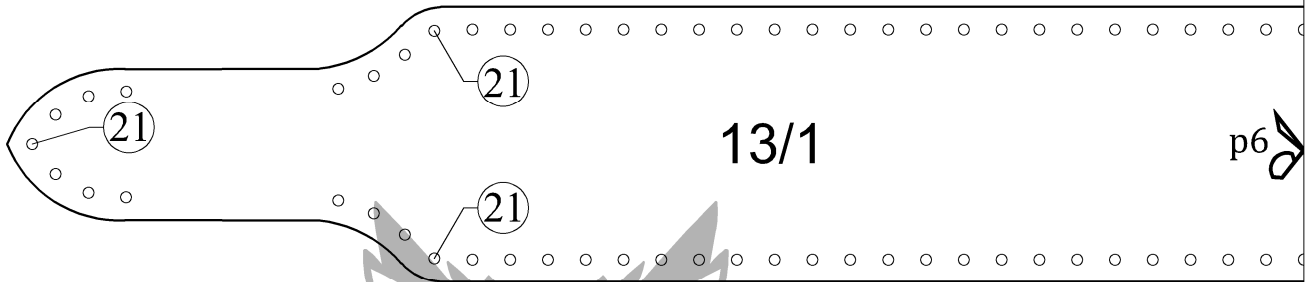
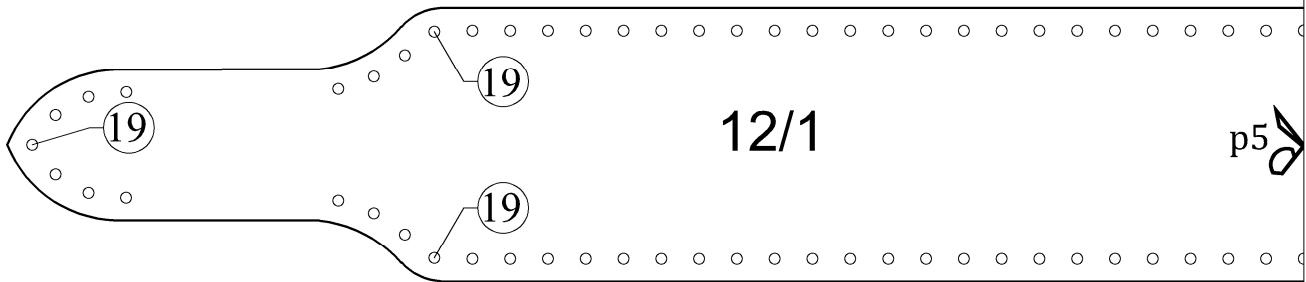
Juliet bag: back and
back components



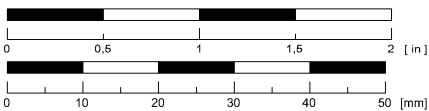
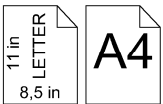
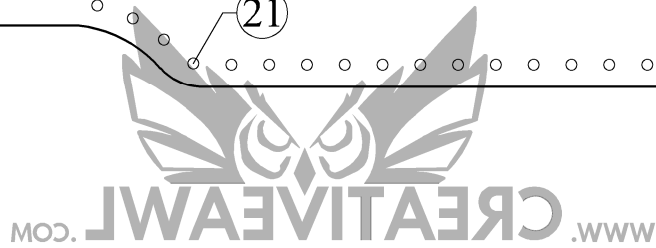
Juliet bag: back and back components

Strap mounted inside the handle p3

Strap mounted inside the handle p4



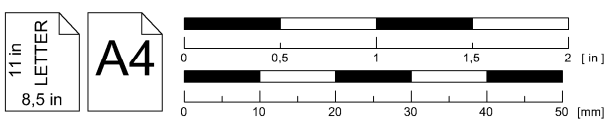
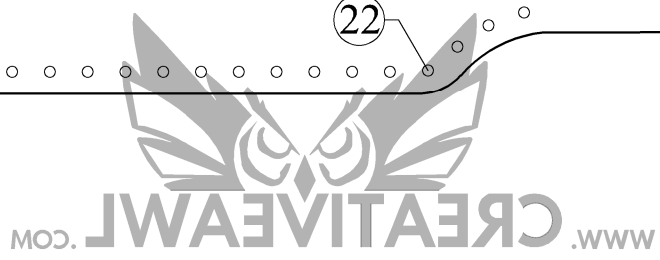
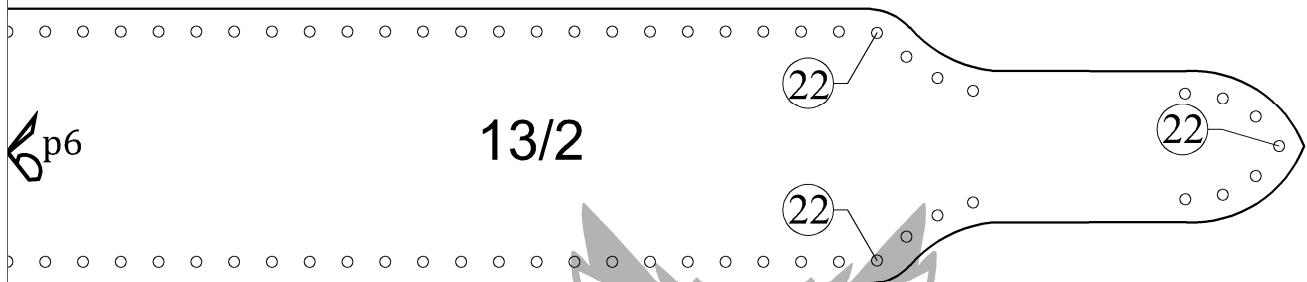
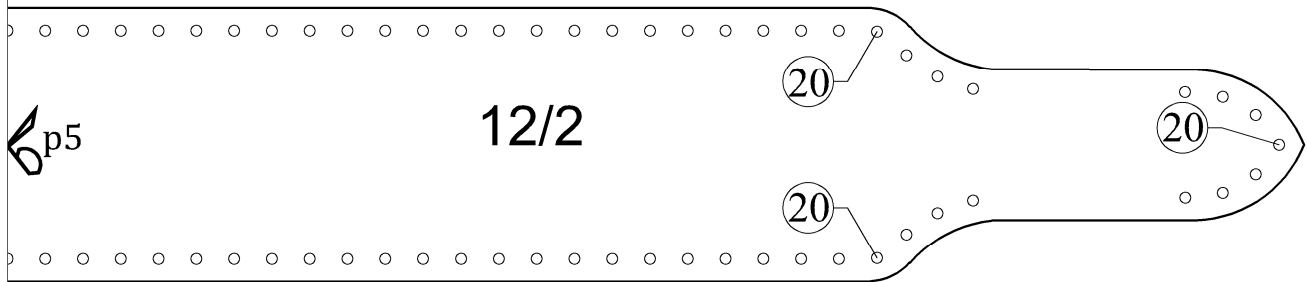
Zipper tip



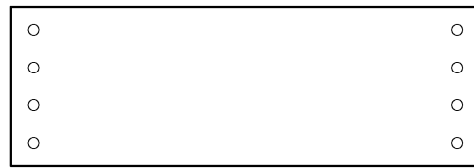
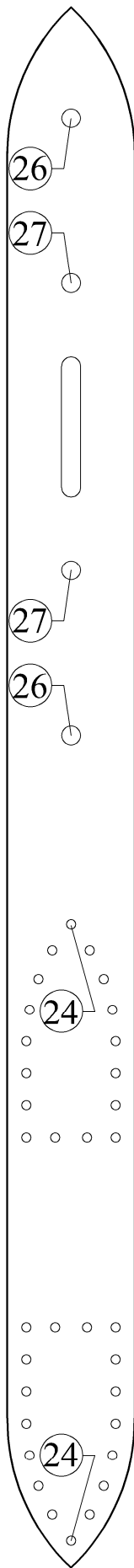
Juliet bag: handles

p3 Strap mounted inside the handle

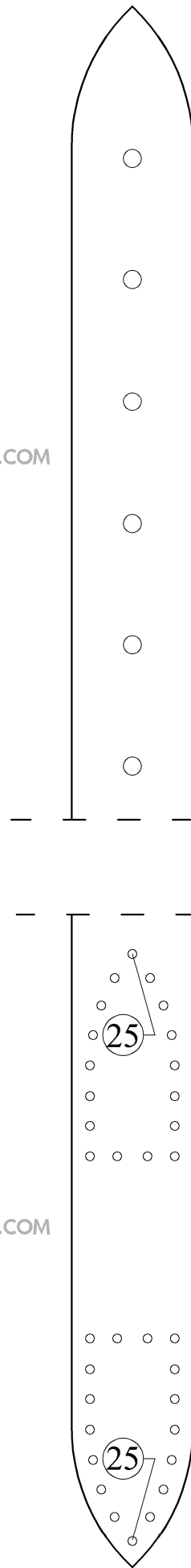
p4 Strap mounted inside the handle



Juliet bag: handles



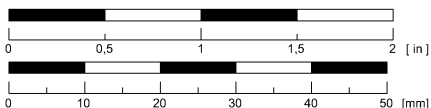
Juliet bag: shoulder
strap 20 mm



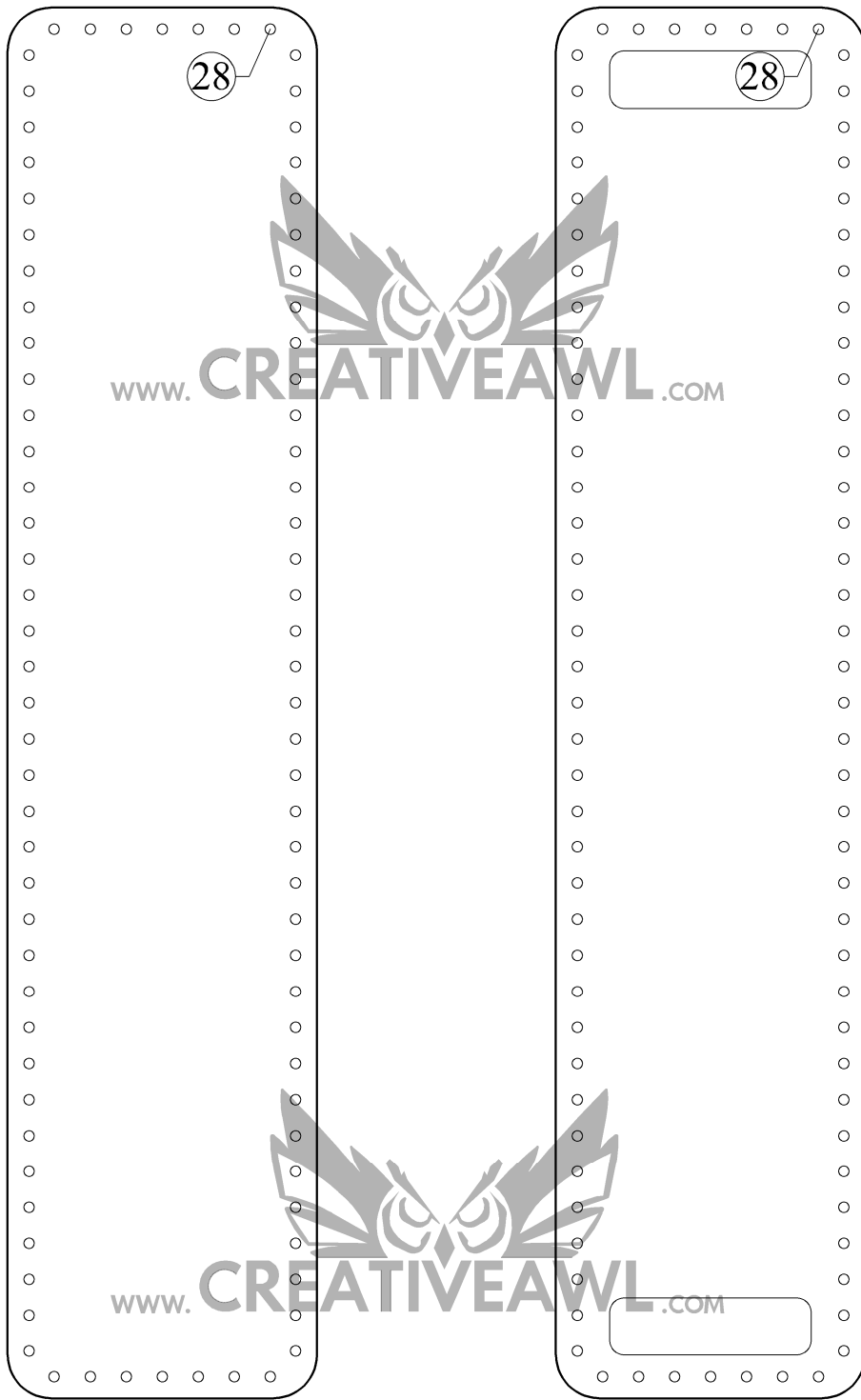
about 110 - 130 cm (44 - 52 in)

11 in
LETTER
8,5 in

A4

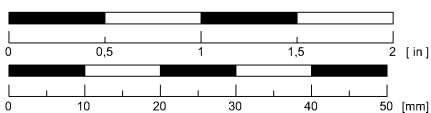


20



11 in
LETTER
8,5 in

A4



Juliet bag: shoulder arm
strap cover