

# "Royal" shoulder bag



2,5 mm  
(6-7 oz)



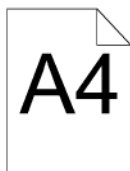
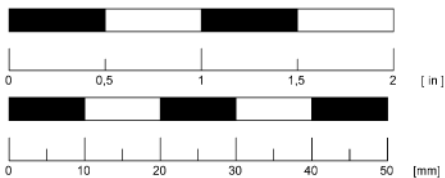
CUT  
◀ 1

CUT  
2 ▶

CUT  
◀ 3

2,5 mm  
(6-7 oz)

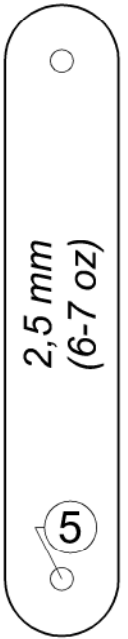
CUT  
4 ▶



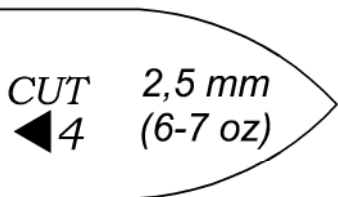
# "Royal" shoulder bag



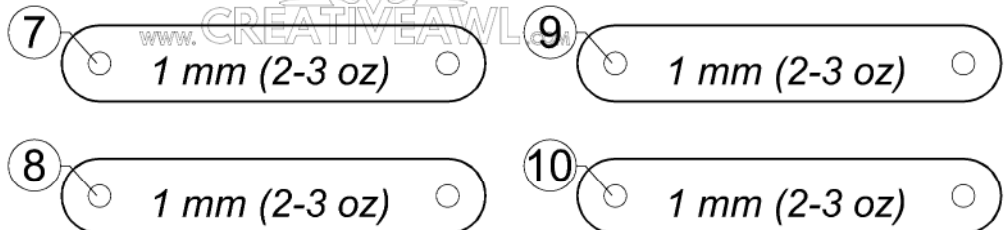
2,5 mm  
(6-7 oz)



CUT  
◀ 2



CUT 2,5 mm  
◀ 4 (6-7 oz)

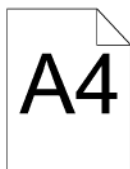
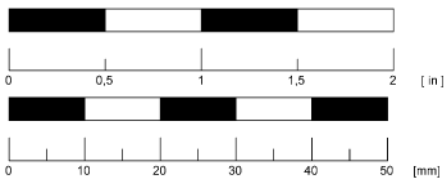


7 1 mm (2-3 oz)

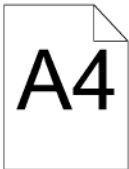
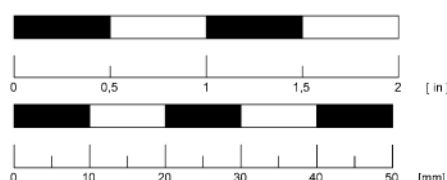
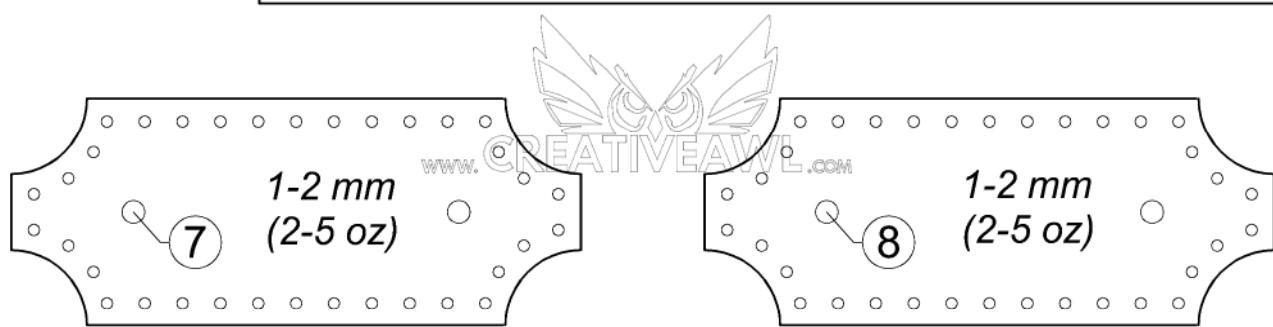
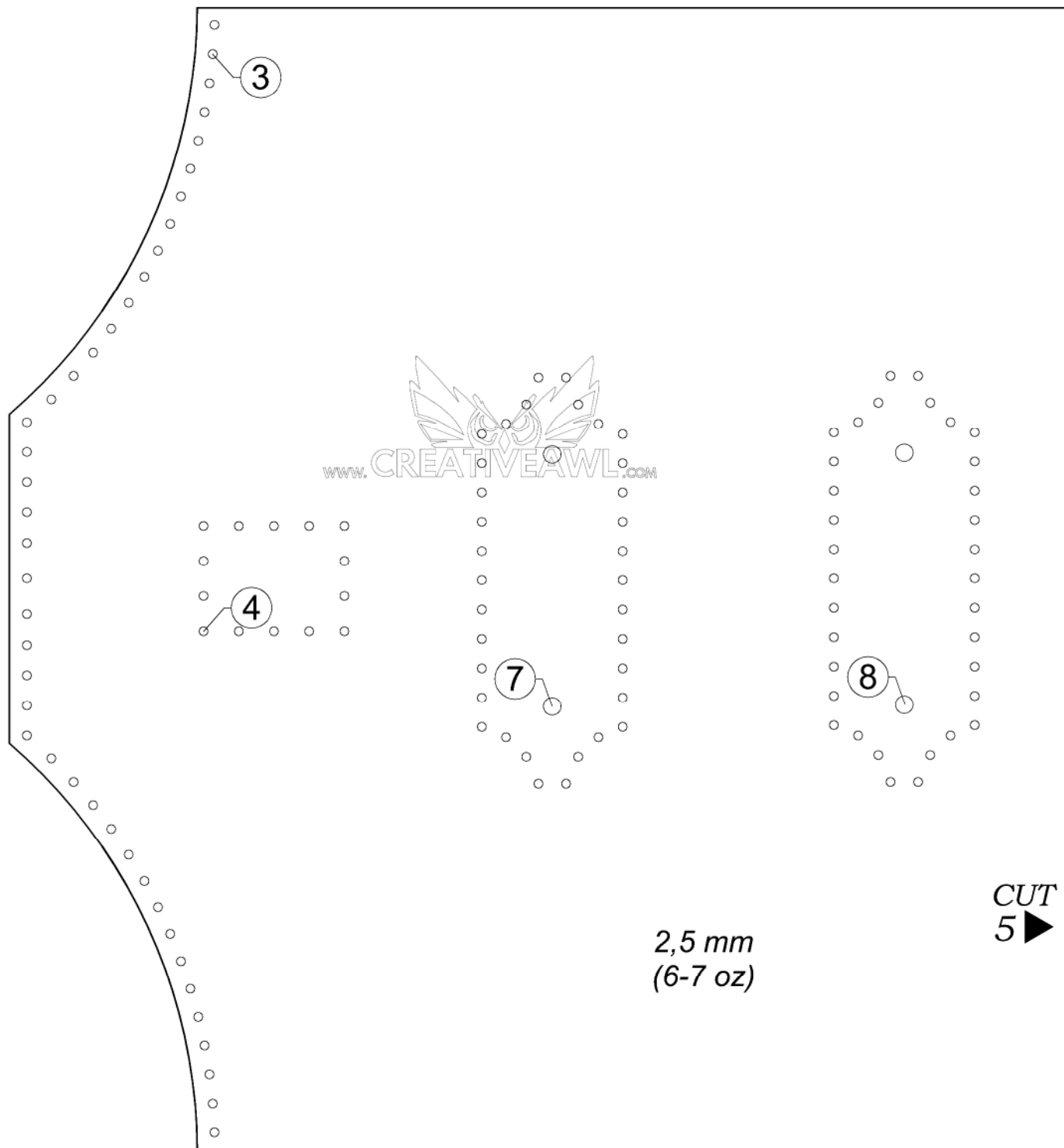
9 1 mm (2-3 oz)

8 1 mm (2-3 oz)

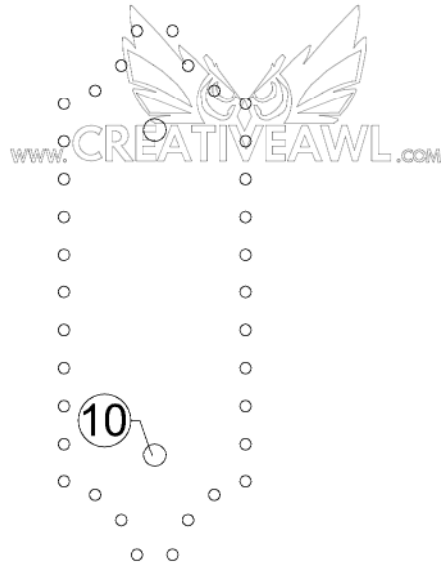
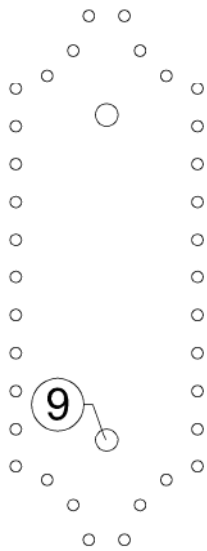
10 1 mm (2-3 oz)



# "Royal" shoulder bag

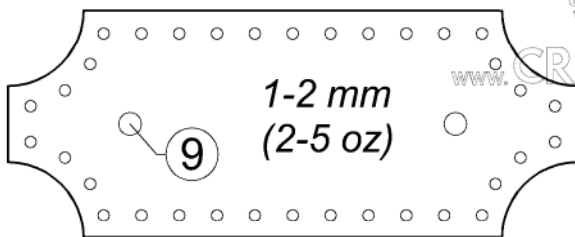


# "Royal" shoulder bag

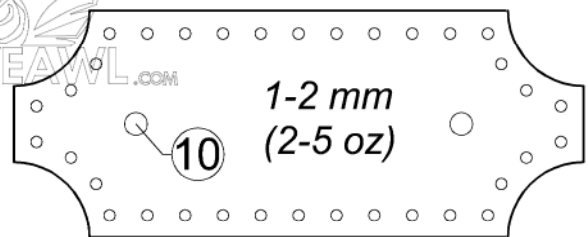


CUT  
◀5

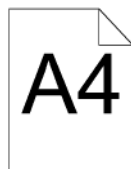
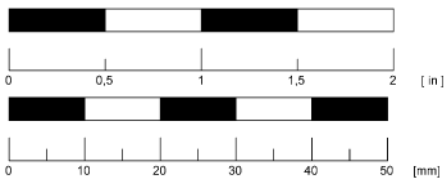
2,5 mm  
(6-7 oz)



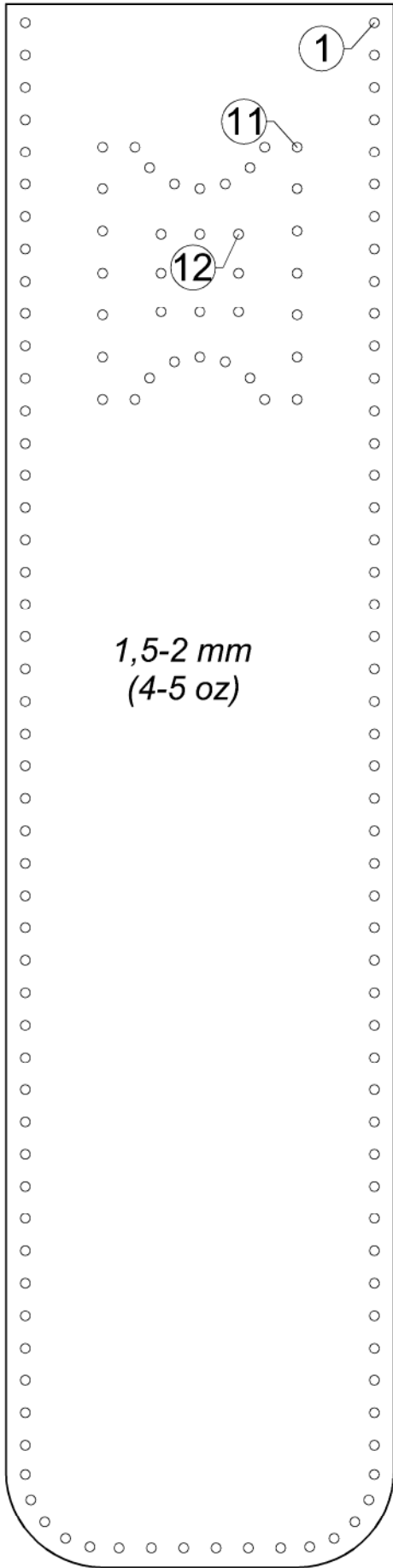
1-2 mm  
(2-5 oz)



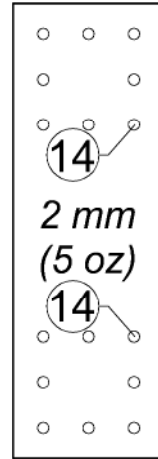
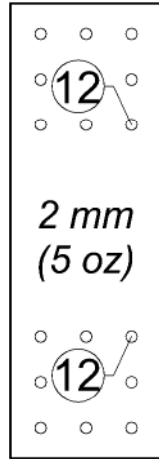
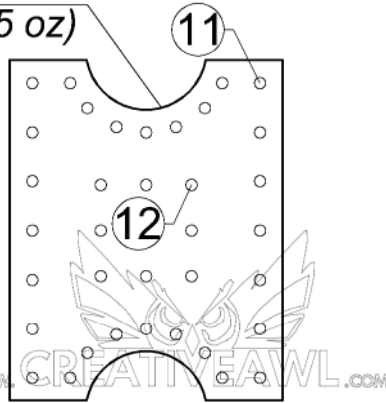
1-2 mm  
(2-5 oz)



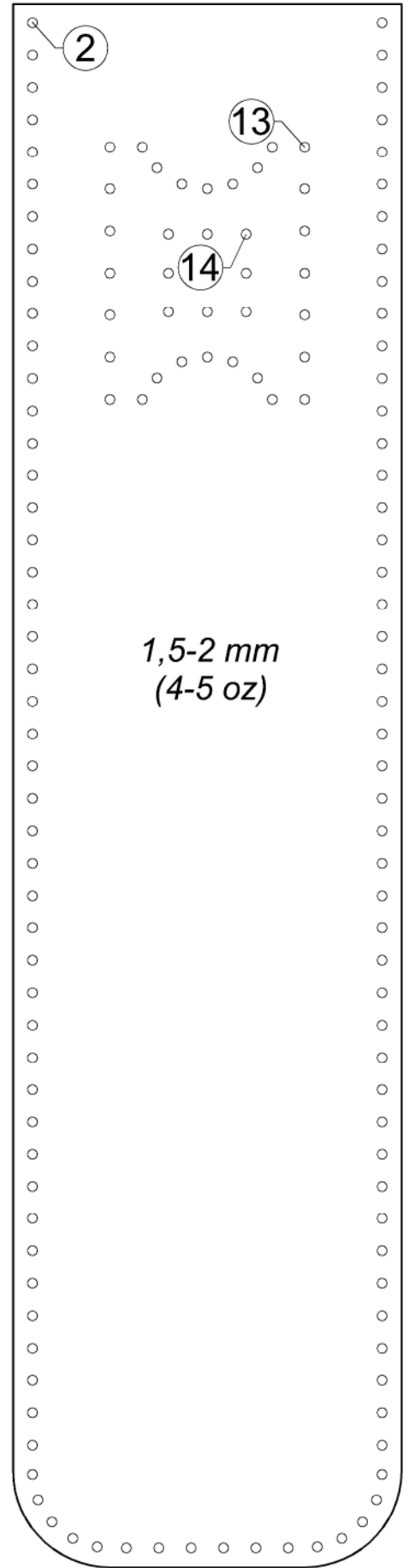
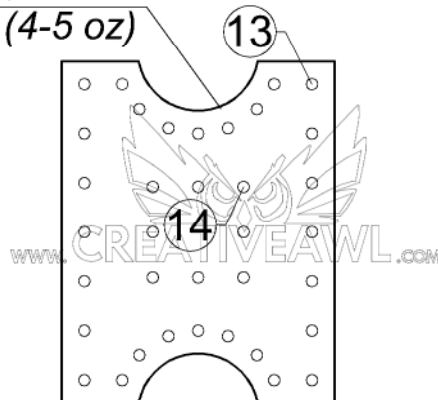
"Royal"  
shoulder bag



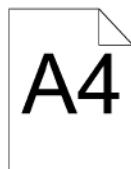
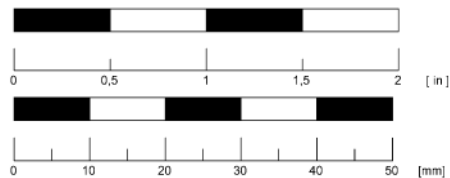
1,5-2 mm  
(4-5 oz)



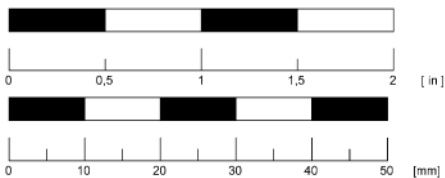
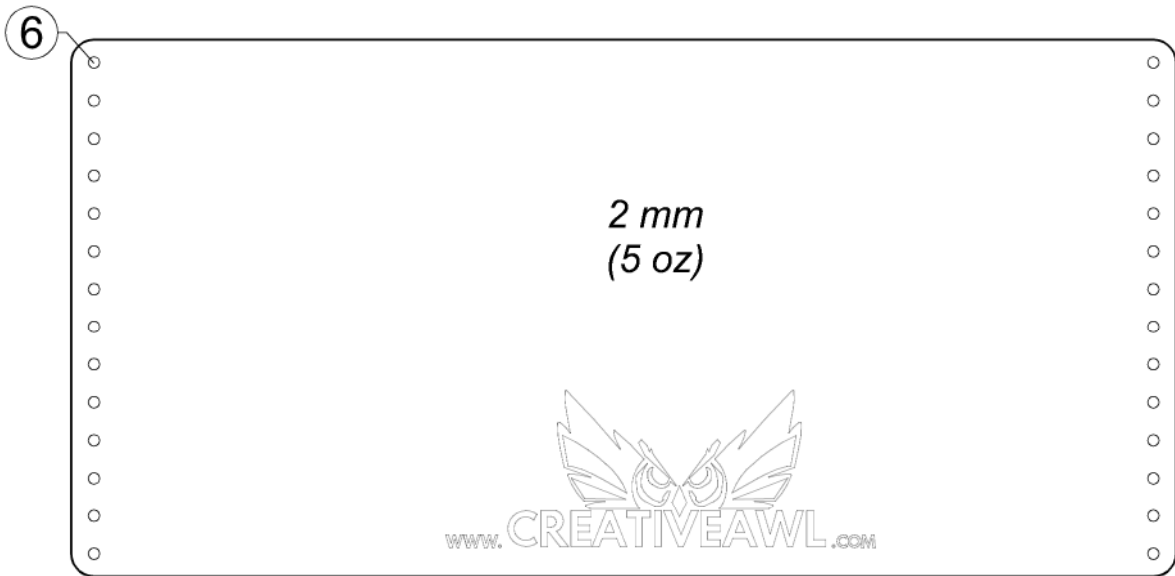
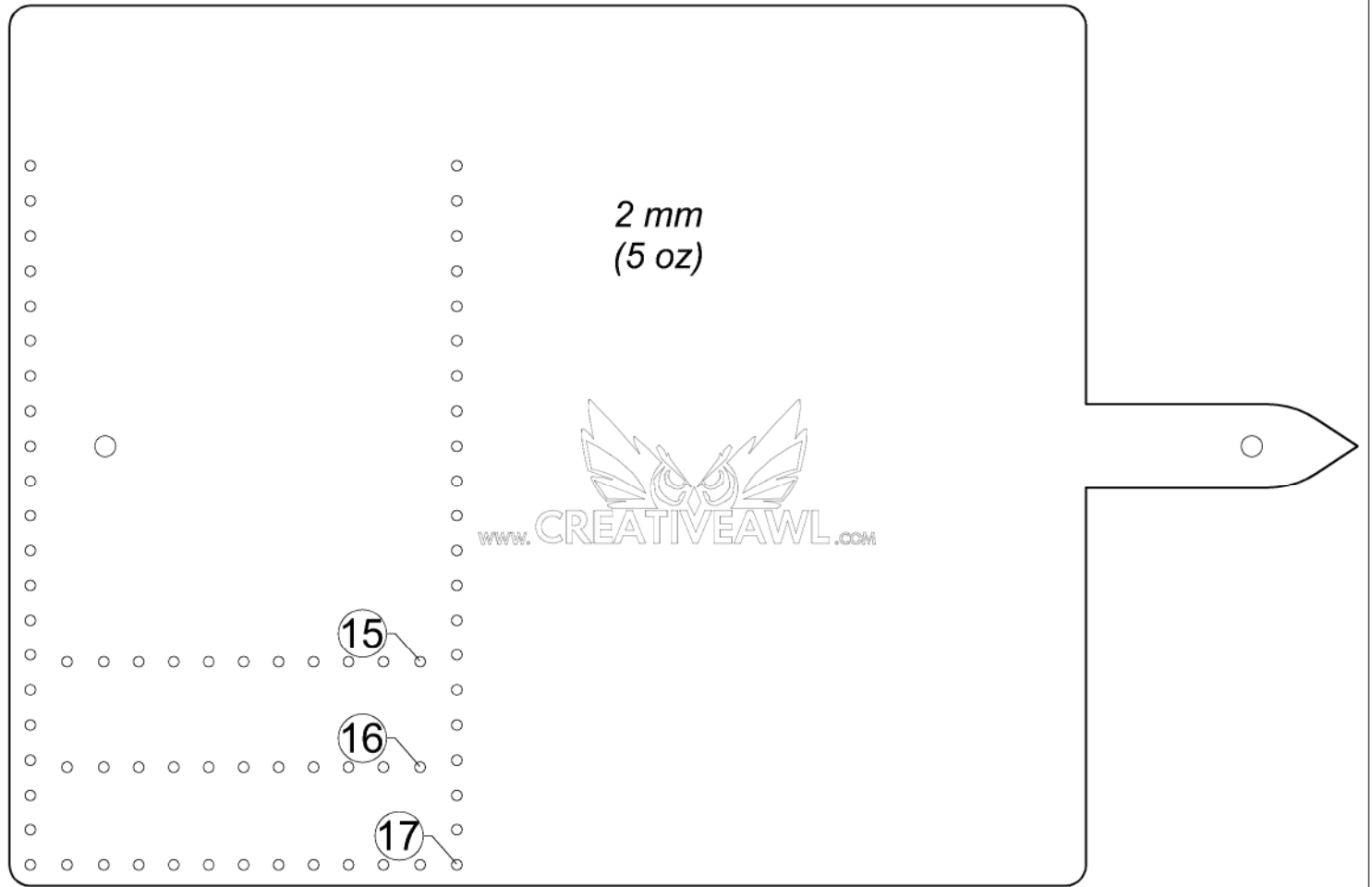
1,5-2 mm  
(4-5 oz)



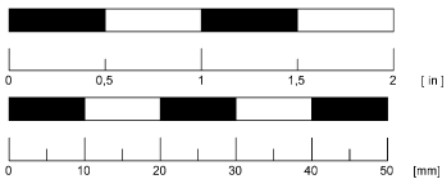
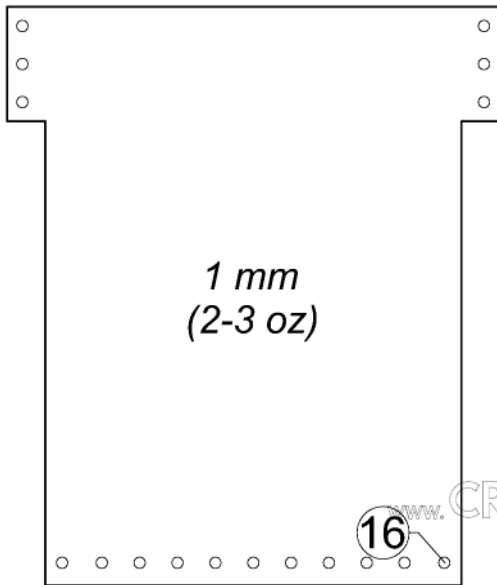
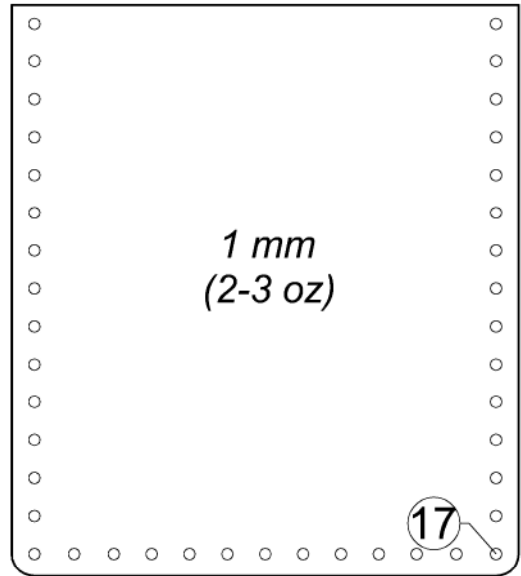
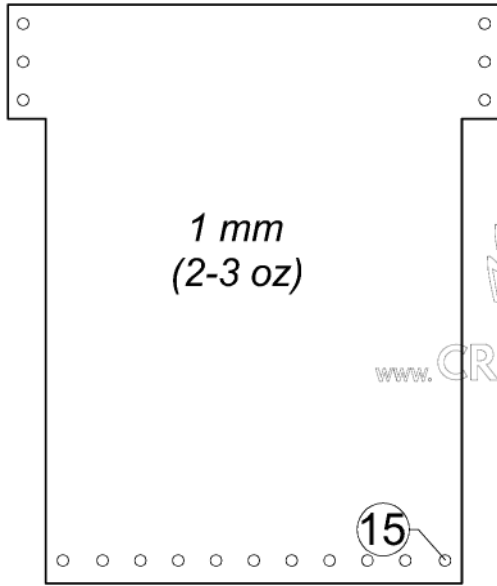
1,5-2 mm  
(4-5 oz)



# "Royal" shoulder bag

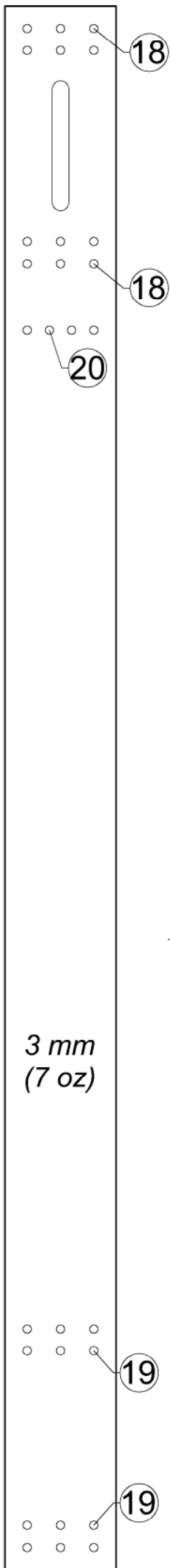


# "Royal" shoulder bag

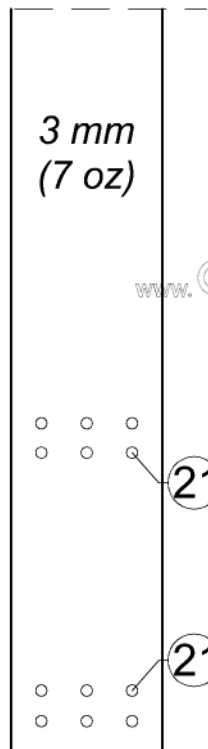
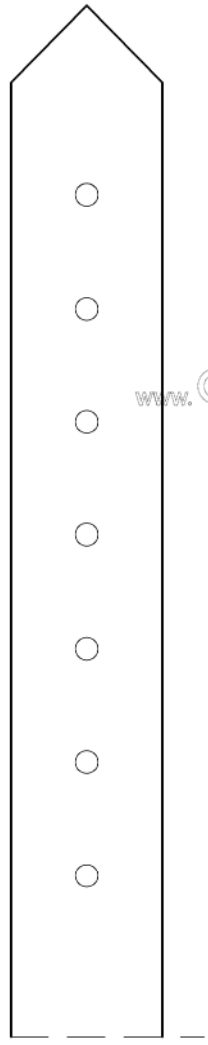


# "Royal" shoulder bag





3 mm  
(7 oz)



3 mm  
(7 oz)

about 110 - 130 cm (44 - 52 in)

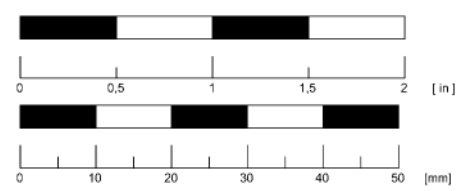


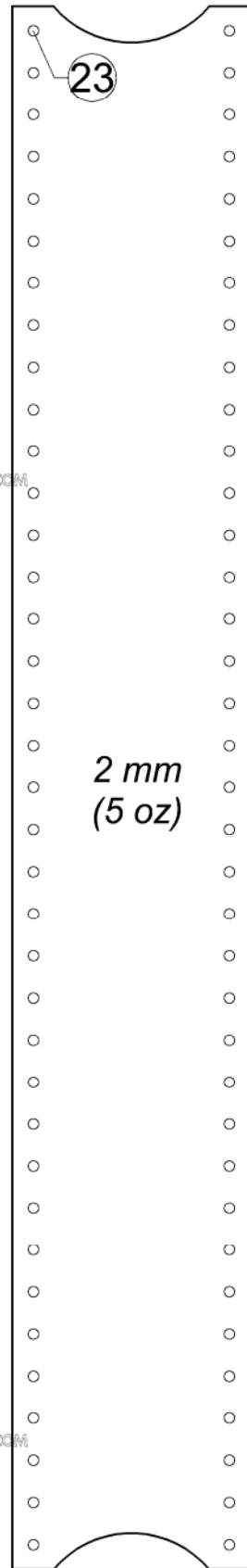
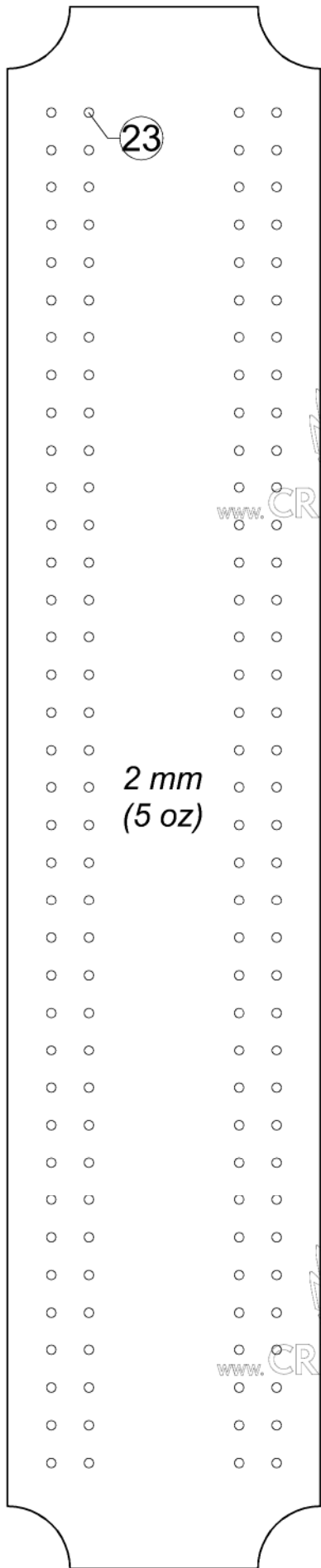
1,5-2 mm (4-5 oz)



1,5-2 mm (4-5 oz)

# "Royal" shoulder bag





# "Royal" shoulder bag

