



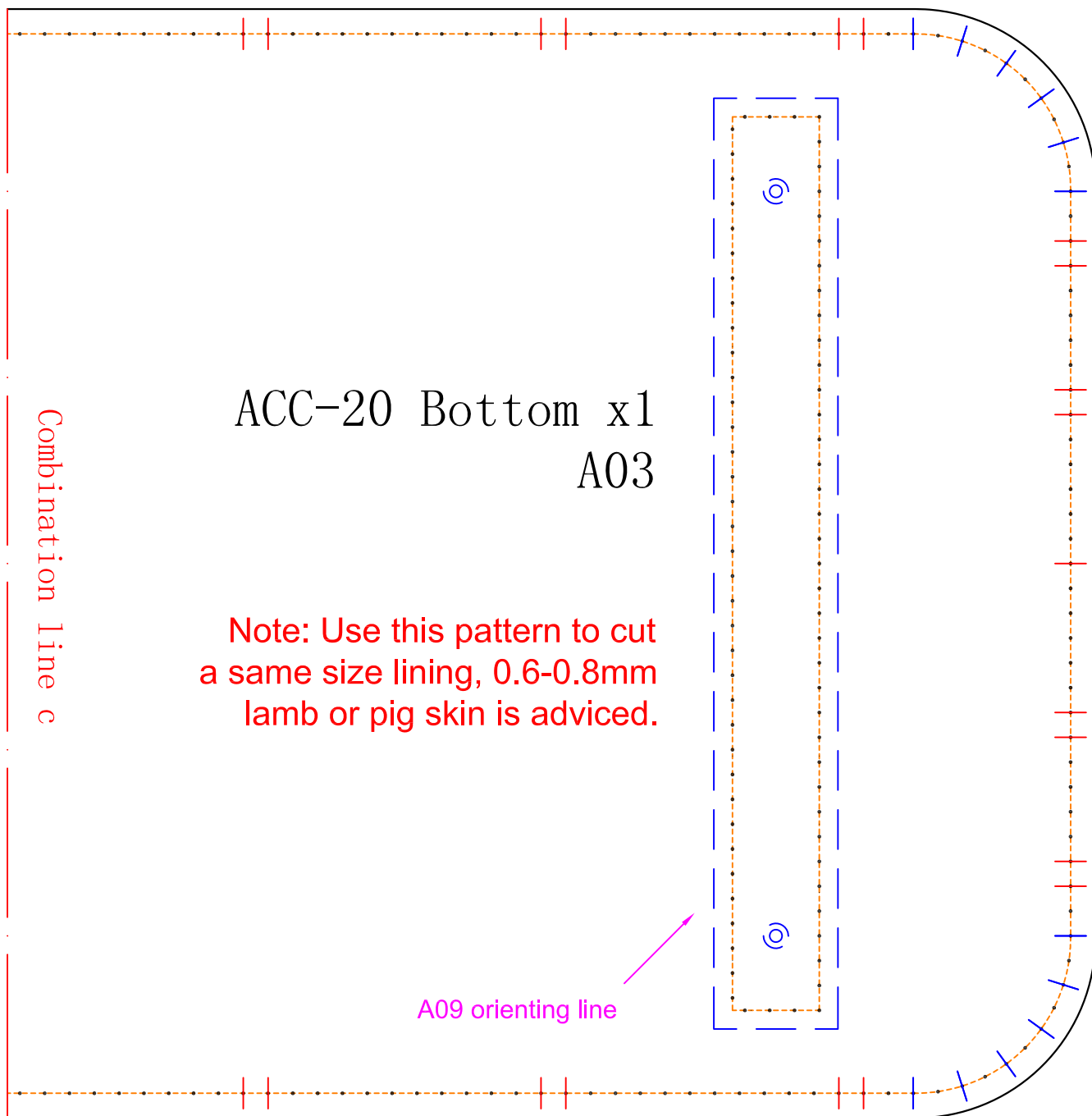
Zipper bag

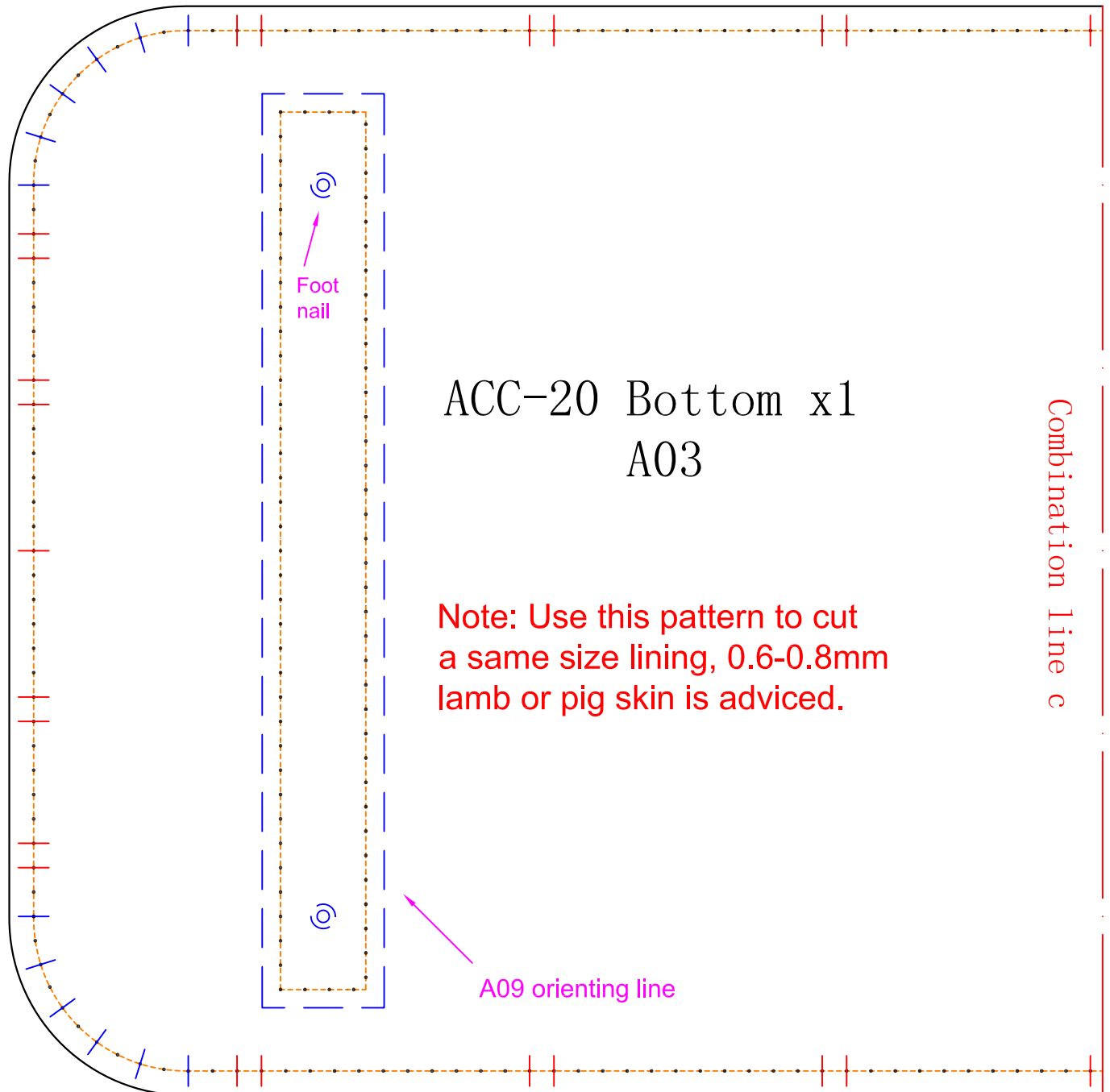
A rectangular pattern for a zipper bag, enclosed in a solid black border. Inside, a dashed orange line with small black dots at the intersections forms a slightly smaller rectangle, representing the stitching line. The text "Zipper bag" is centered within this dashed boundary.

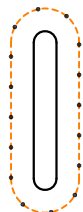
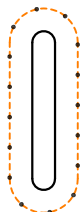
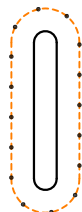


A01 Lining pocket

A rectangular pattern for a lining pocket, enclosed in a solid black border. Inside, a dashed orange line with small black dots at the intersections forms a slightly smaller rectangle, representing the stitching line. The text "A01 Lining pocket" is centered within this dashed boundary.



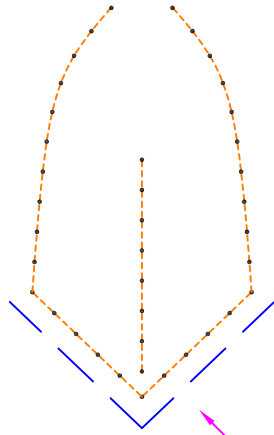




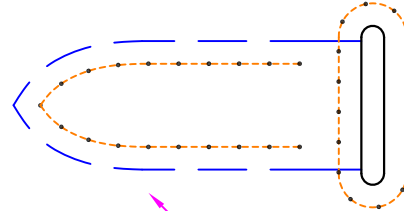
ACC-20 Gusset x2
A04

Note: Use this pattern to cut
a same size lining, 0.6-0.8mm
lamb or pig skin is adviced.





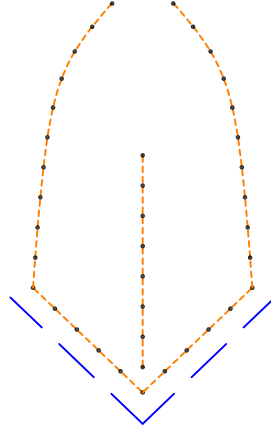
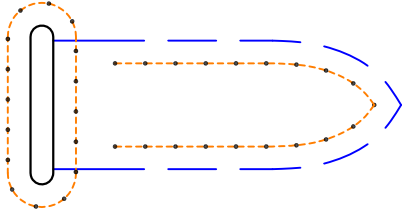
A07 orienting line



A06 orienting line

Combination line b

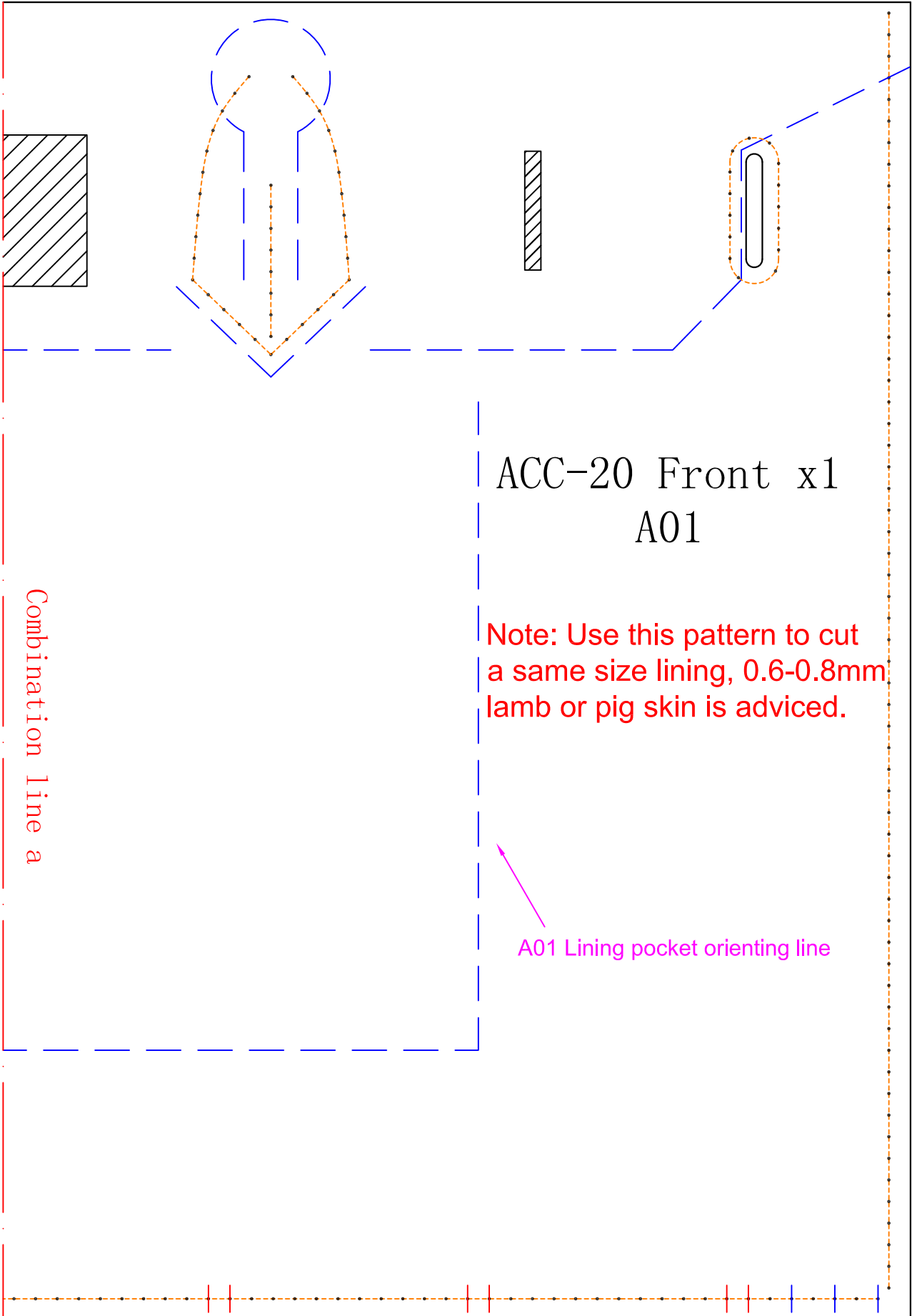
ACC-20 Back x1
A02



ACC-20 Back x1
A02

Combination line b





ACC-20 Front x1
A01

Note: Use this pattern to cut
a same size lining, 0.6-0.8mm
lamb or pig skin is advised.

Combination line a

A01 Lining pocket orienting line

