

# BRANDY



## Materials:

I used 3-4 oz veg tan which I previously treated with grease and oil. For the body you can use chrome tanned of similar weight, medium hand. For the front panel of the pocket you need a piece of 3-4 oz veg tan because there is some wet forming needed. For the closures and handles 6-7 oz.

## Hardware:

1 x button stud

## Tools:

Scissors, knife (paper knife or rotary cutter would also work).

Stitching irons: my pattern is made for 5mm stitching irons (5 stitches per inch). If you are willing to use any other size please make sure that the hole count is the same where it has to be the same.

Needles - according to your thread size, a pair of harness needles.

Mallet, hole punch, 1" bag punch (oblong).

## Instructions:

Print the pattern at actual size (100%). Use the reference on top of each page to make sure everything is printed correctly. Join the pages together. Cut the pieces.

Let's start with the pocket. For me cutting it out was a bit tricky, take it slow, you need to be precise and careful when cutting the pocket hole in the main panel. Might take some sanding and burnishing afterwards.

Install the button stud onto the pocket front panel. Put the pocket front panel on the pocket lining, place them underneath the pocket hole in the front panel and sew the pocket in (that is, 3 layers of leather). After you finish that seam, pass the locket flap lining to the right side. It will look like this:



If you are using veg tan leather for the whole bag, you may want to burnish the pocket flap partially below the rounded seam (under the "logo" area) before assembling the flap.

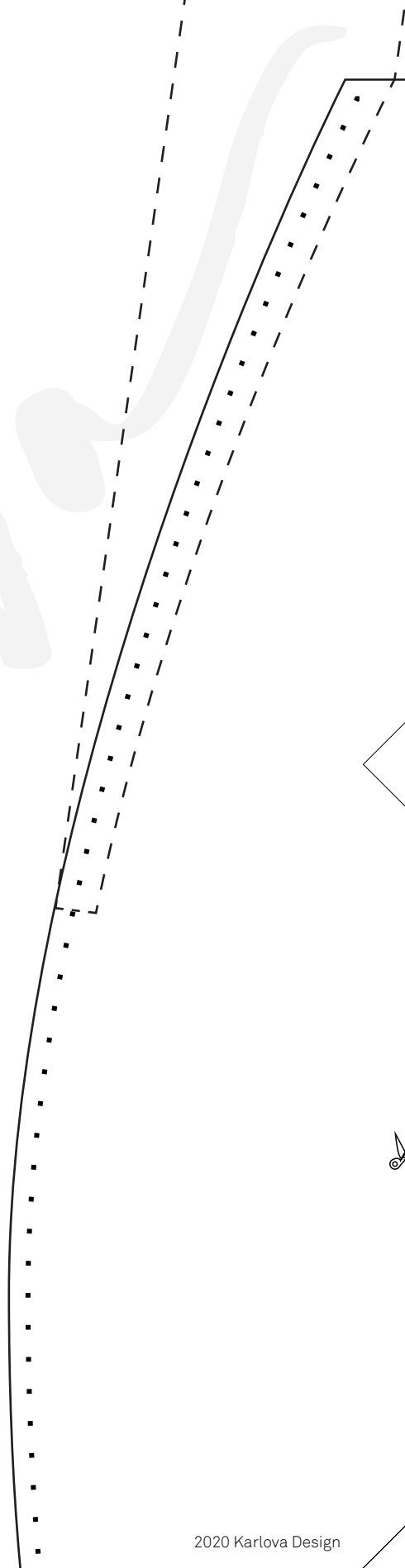
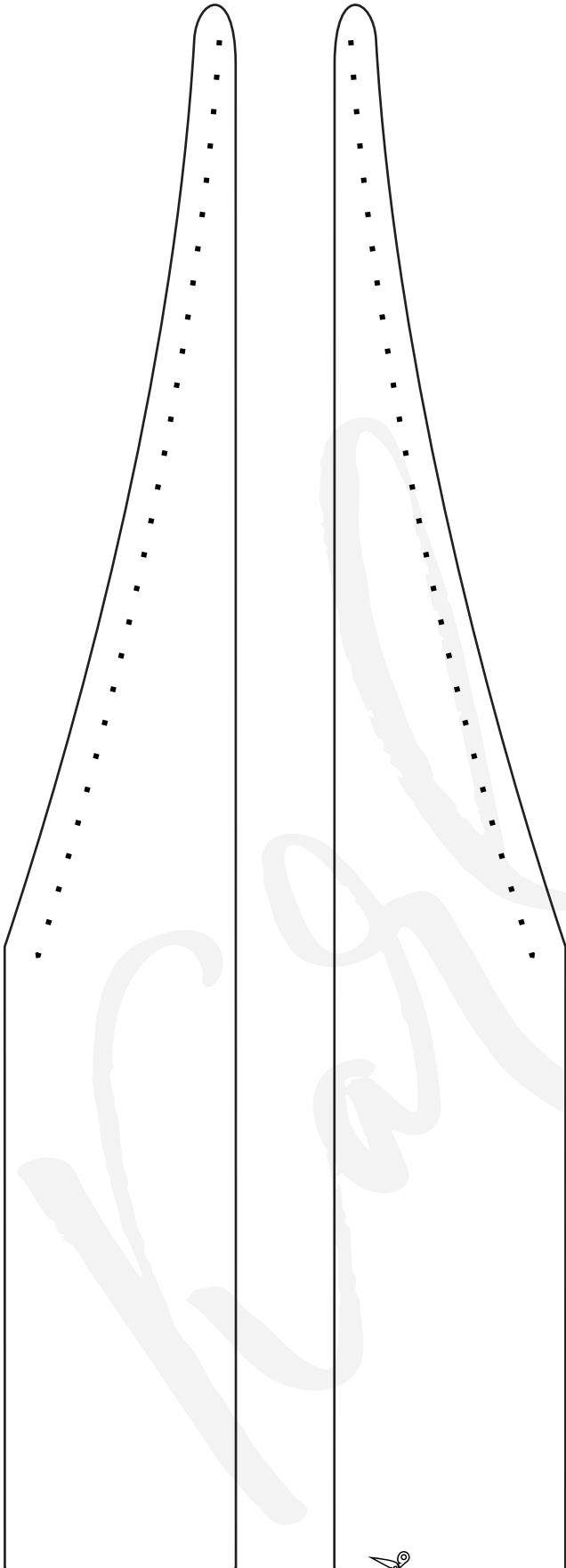
Prepare the pocket closure and start stitching the flap together. Insert the closure in between the layers and finish the seam. Stitch the round seam above the closure.

Dampen the pocket front panel and shape the belly (see the comment on the pattern on how I did it). You can do it after you assemble the entire bag.

0cm 1cm 2cm 3cm 4cm 5cm

A-1

1/8 3/8 1/2 5/8 3/4 7/8 1in 2in 3in



0cm 1cm 2cm 3cm 4cm 5cm

A-2

1in 2in 3in

## MAIN FRONT PANEL

Strap is sewn flesh  
side up

Sew strap  
keeper  
here  
(doesn't really matter  
use any 3 holes you like)

Glue the flap and flap lining together or small stuff will fall in this "pocket" all the time and it is not supposed to. Be careful because it has to look clean and nice on the inside. Better do it after you assemble the whole pocket and before you assemble the bag.

Nice spot for  
your logo (if it fits)

0cm 1cm 2cm 3cm 4cm 5cm

A-3

1in 2in 3in

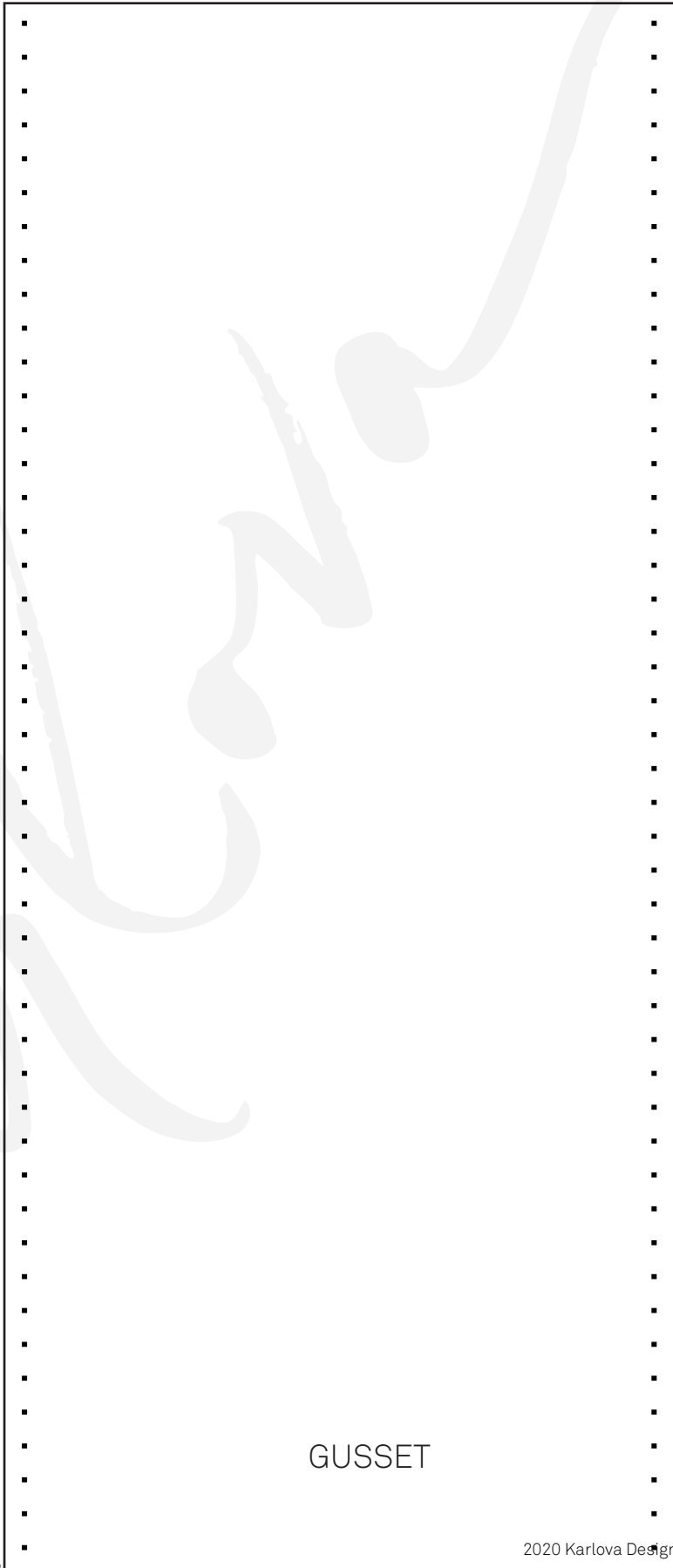
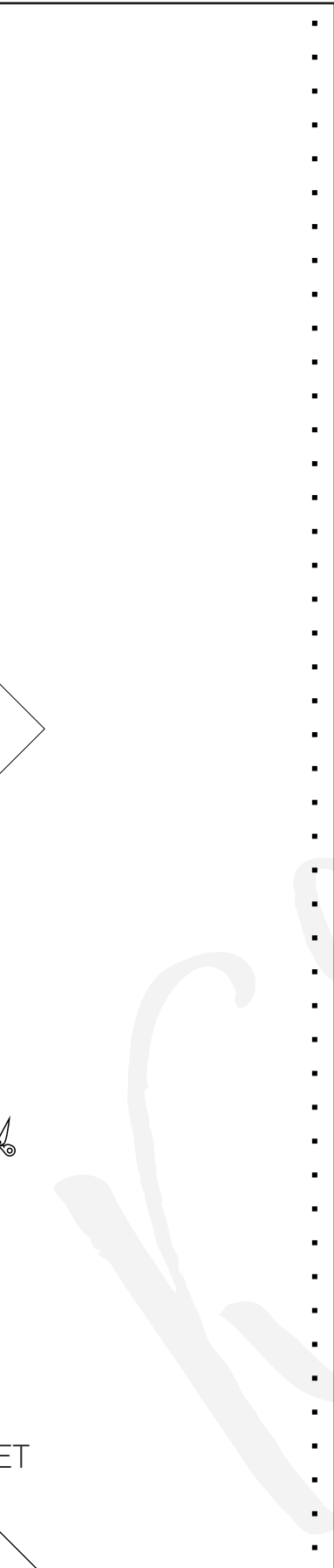


GUSSE

0cm 1cm 2cm 3cm 4cm 5cm

A-4

1in 2in 3in



ET

GUSSET

0cm 1cm 2cm 3cm 4cm 5cm

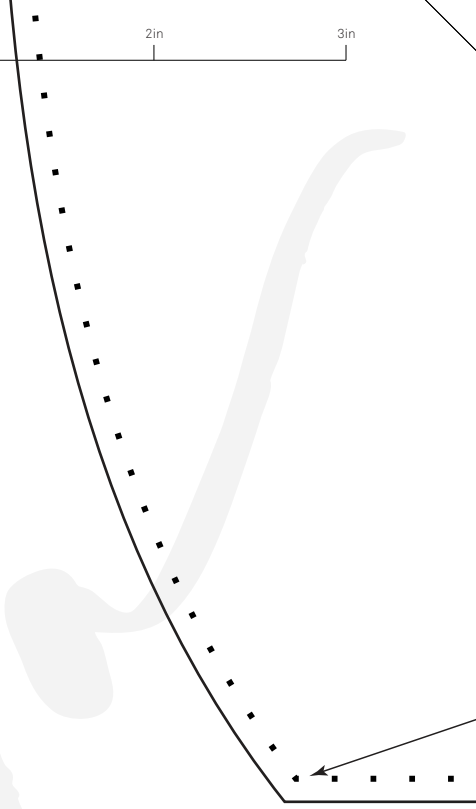
B-1

1in 2in 3in



Grain side towards front (and back respectively), flesh side towards th

TOP STRAP KEEPER



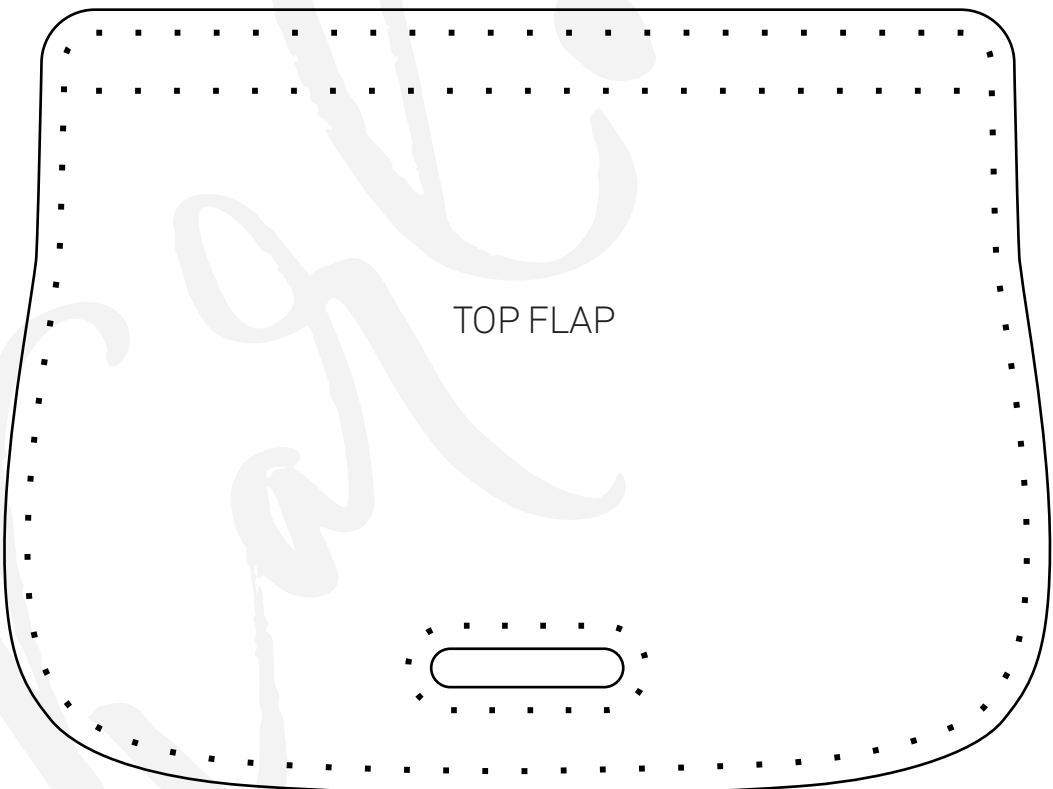
0cm 1cm 2cm 3cm 4cm 5cm

B-2

1in 2in 3in

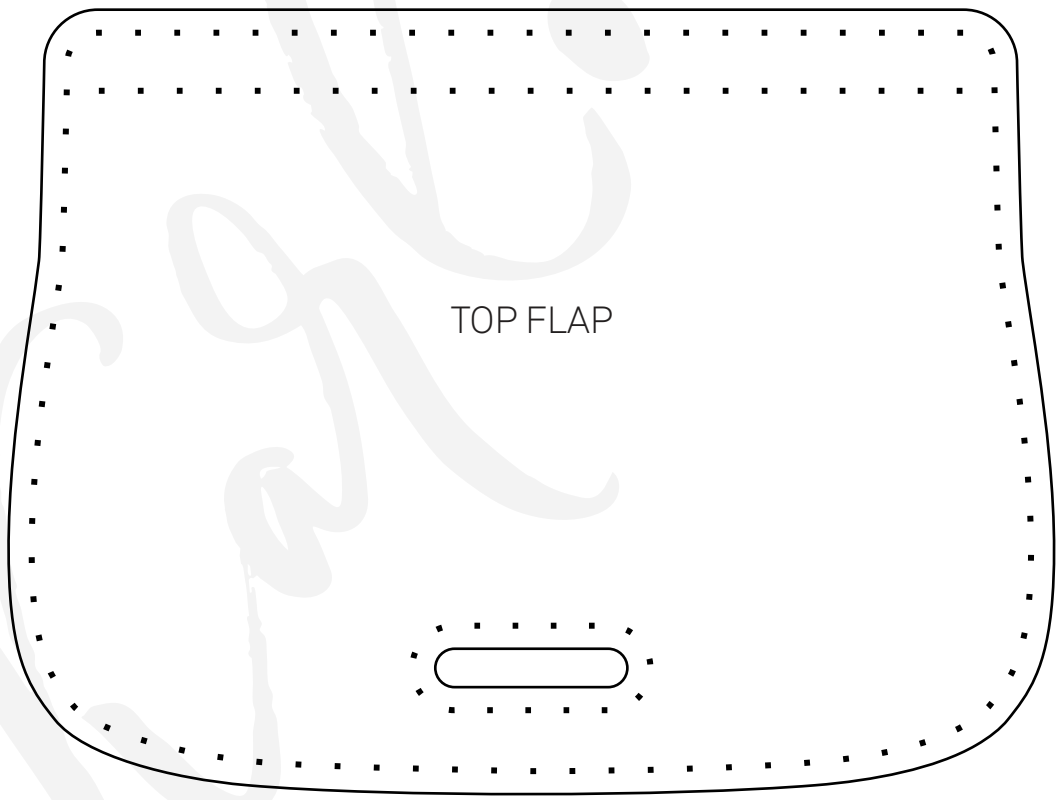
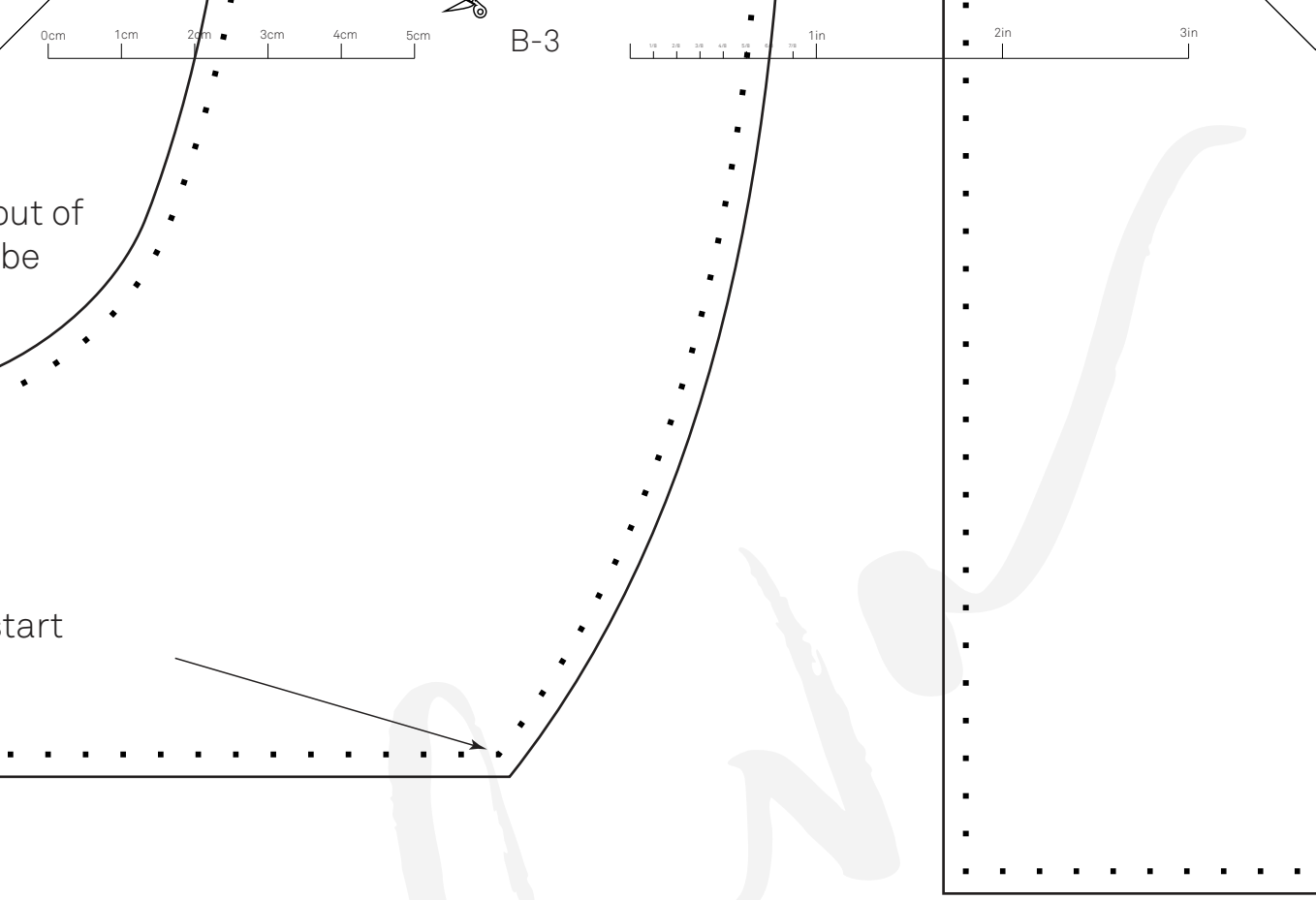
The closure is sewn in between the flap and flap lining. Make it of something thick like 6-7 oz, sand it, and burnish nicely. It has to be firm and beautiful.

Line these holes up with corresponding ones on the bottom part (and start stitching front and bottom together from one of them)





B-3

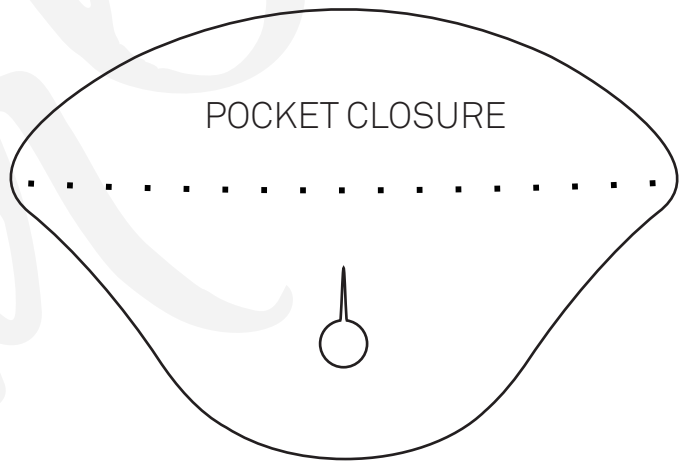
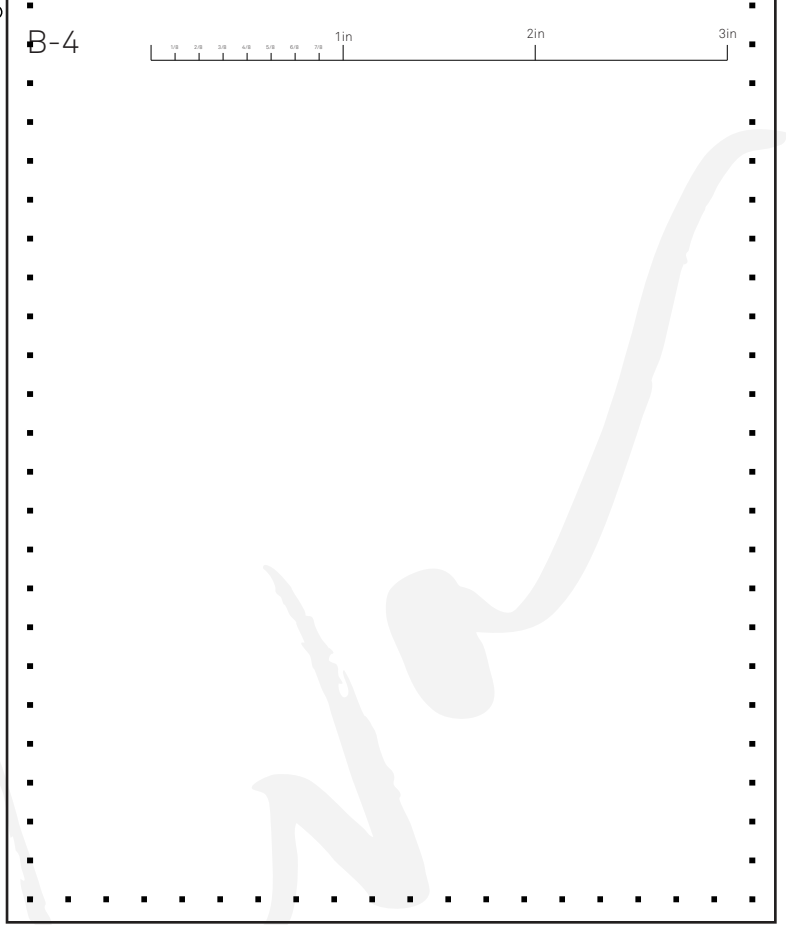


TOP FLAP

0cm 1cm 2cm 3cm 4cm 5cm

B-4

1in 2in 3in



0cm 1cm 2cm 3cm 4cm 5cm

HANDLE

C-10 Gussets.  
HANDLE



1in 2in 3in

This part ha  
will need to  
giving it vol

This pa

0cm 1cm 2cm 3cm 4cm 5cm

C-2

1in 2in 3in

as to be made of veg tan because after assembly you dampen it and shape the belly. I did it with just my fingers. I rolled the leather along the perimeter and let it dry overnight.



POCKET FRONT PANEL

part is the lining to the pocket flap.

0cm 1cm 2cm 3cm 4cm 5cm

C-3

1in 2in 3in



MAIN BACK

0cm 1cm 2cm 3cm 4cm 5cm

C-4

1/8 3/8 1/2 5/8 3/4 1in 2in 3in



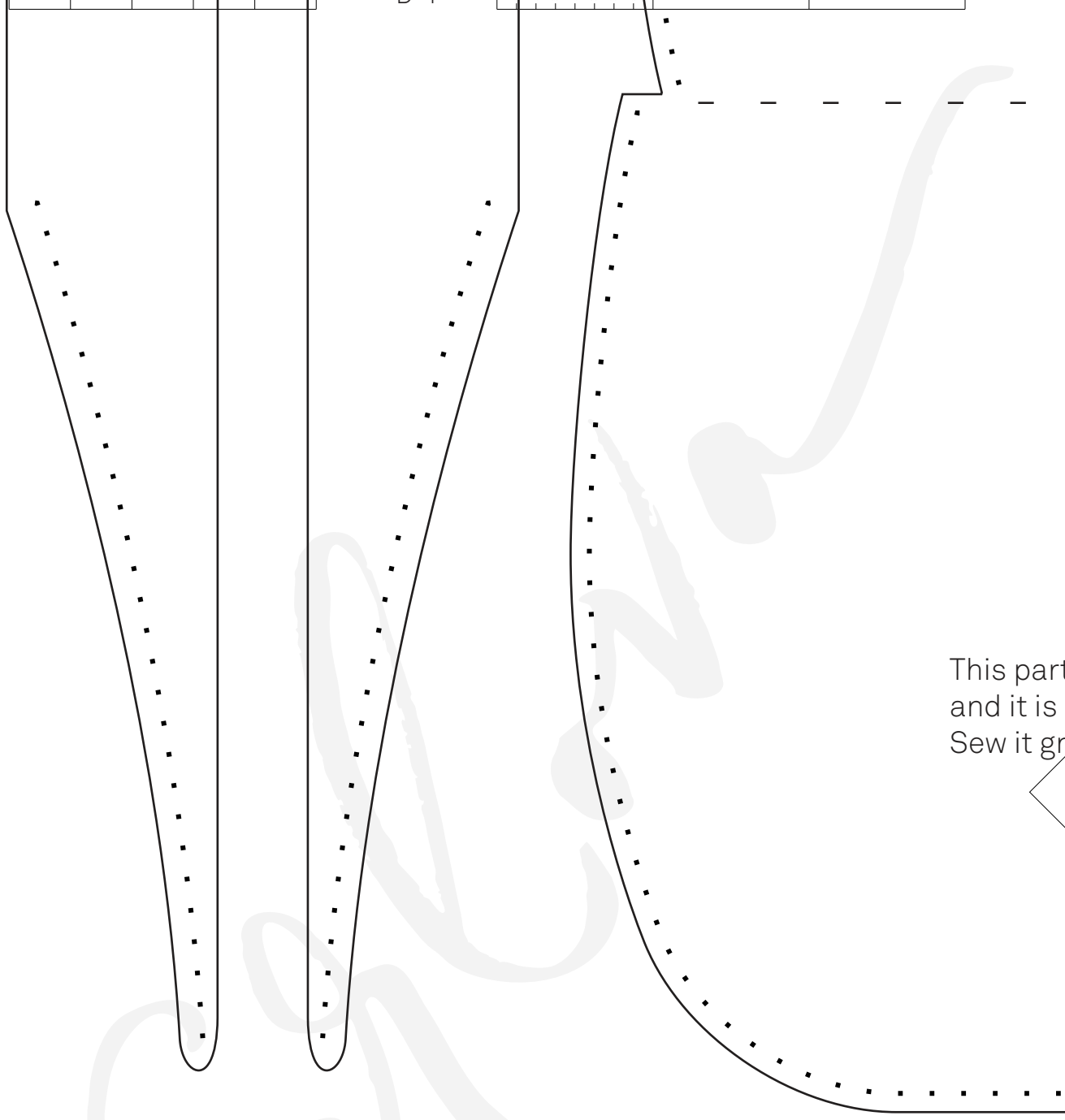
K PANEL



D-1

0cm 1cm 2cm 3cm 4cm 5cm

1in 2in 3in



This part  
and it is s  
Sew it gr



0cm 1cm 2cm 3cm 4cm 5cm

D-2

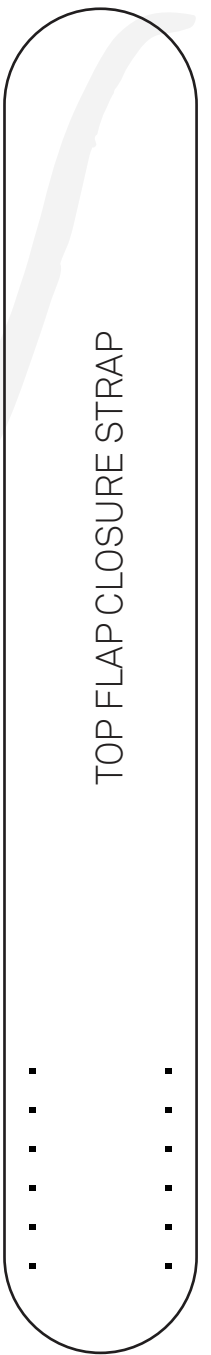
1in 2in 3in

*folding line*

POCKET LINING

is the back panel of the pocket  
sewn underneath the main front panel.  
main side out.

TOP FLAP CLOSURE STRAP



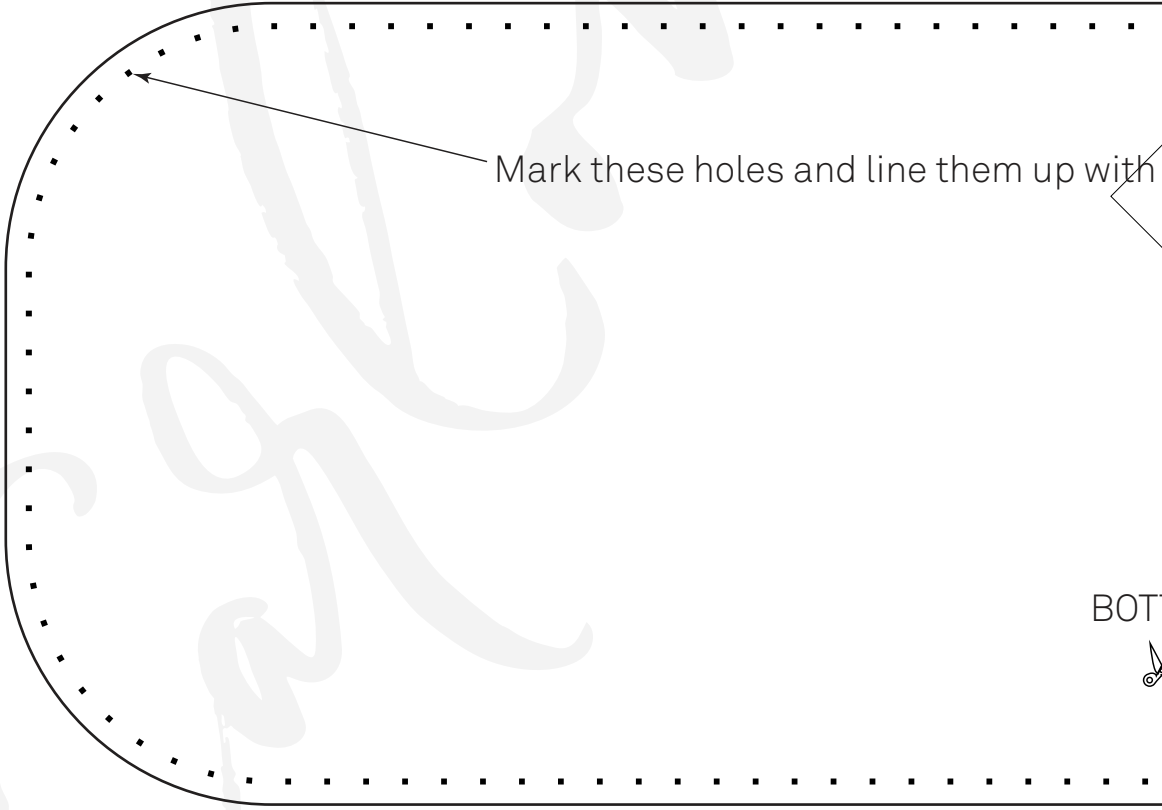




D-3

0cm 1cm 2cm 3cm 4cm 5cm

1in 2in 3in



Mark these holes and line them up with

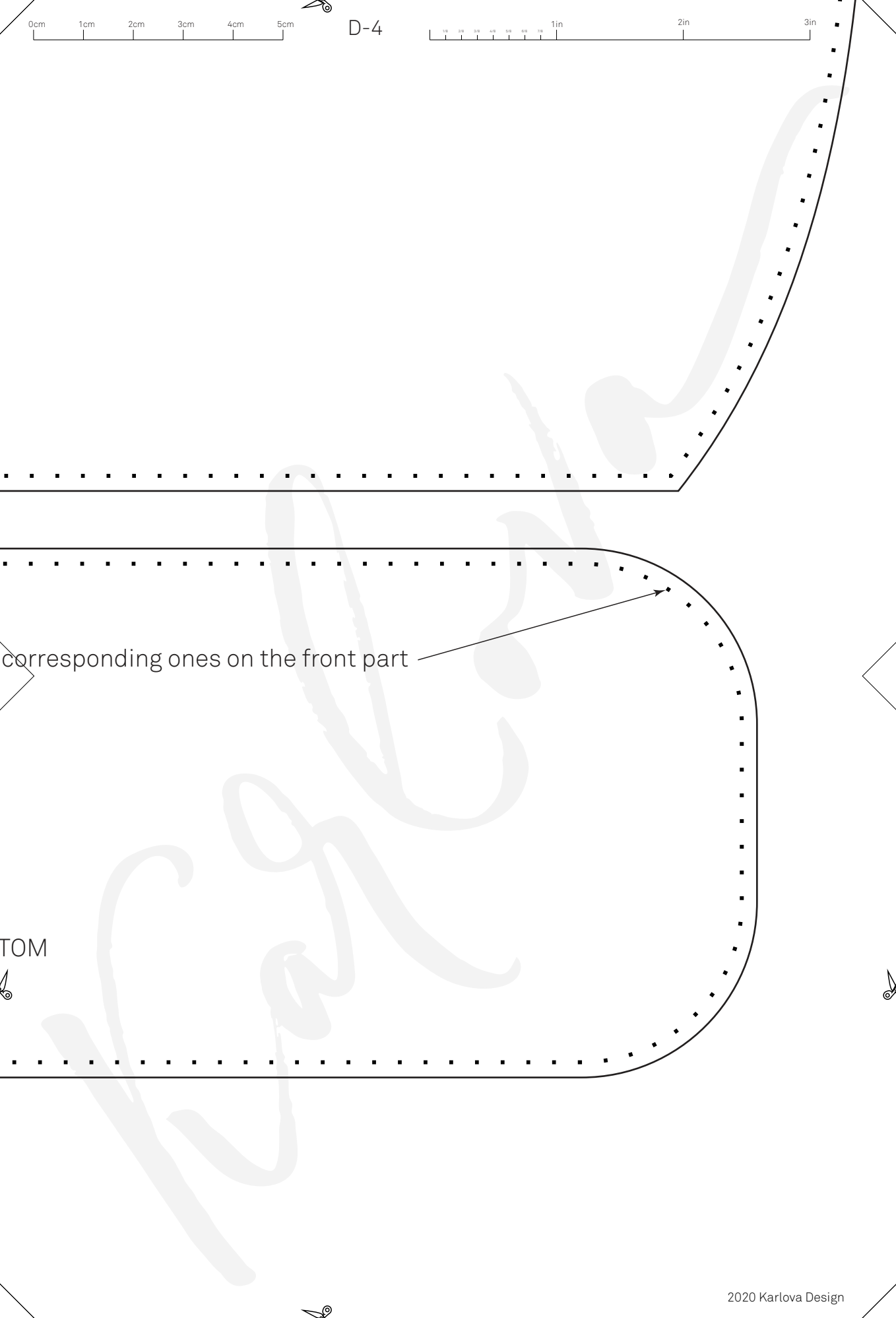
BOT



0cm 1cm 2cm 3cm 4cm 5cm

D-4

1in 2in 3in



corresponding ones on the front part

TOM

Install the top flap on the back panel, placing the bottom part of the flap under the back panel, so it “wraps” it on both sides (back panel should be in between two flap pieces). Complete the seam.

Sew the closure strap and keeper onto the front panel. Depending on the thickness of the leather that you are using for the closure strap, you may need to adjust the length of the keeper. The keeper is sewn with the same seams that attach the strap to the bag, in the following way:



It is a little bit of pain but go slow, you can do it.

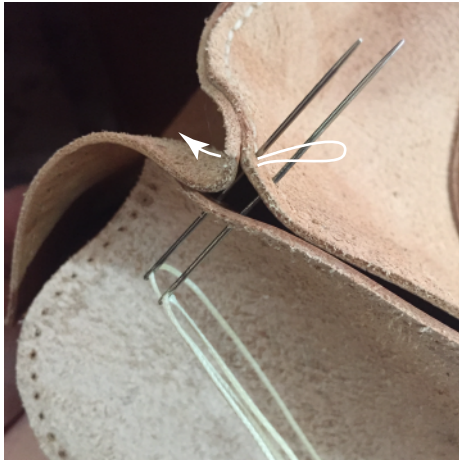
Time for the final assembly. The bag is sewn turned, this is why I don't recommend anything too thick or firm for it, with my medium temper 3-4 oz veg tan it was still a bit tricky to turn it right side out after assembly. Keep this in mind and do it carefully so you don't crumple the pocket and flap.

When assembling, start with the sides, sewing the handles in the seams between the main panels and the gussets, handles always facing towards the main panels (back or front).

After you stitch the sides together, take the bottom and make sure you have tie right holes marked (you only will need one of those holes, to know where you should start stitching). Line up the first hole of the front (or back) panel with one of these holes.

When stitching the whole bag to the bottom, the holes where the sides are joined together, are taken as one hole, and you have to pass the thread through that hole to the other side of the side seam instead of going over them.

The bottom holes of side seams are treated like one hole and correspond to one hole on the bottom.



When you finish stitching the bottom turn the bag right side out and wet form the pocket if you didn't already.

Enjoy your Brandy.

Any questions or comments, e-mail me: [lissius@gmail.com](mailto:lissius@gmail.com).

Join our Karlova Leatherwork Patterns Group on Facebook!  
[www.facebook.com/groups/karlovadesign](http://www.facebook.com/groups/karlovadesign)

