

Fanny Pack Mini



Materials:

For body and bottom 3-4 oz medium to firm temper. Something heavier for straps. I used QTan Bridle 3-4 oz and a waxed veg tan 3-4 oz.

Hardware:

1 x 1" buckle

2 x 1" D-rings

1 x 6" zipper

1 x snap

For the long strap, either double loop or a buckle or any other thing you might prefer.

Rivets

Tools:

Scissors, knife (paper knife or rotary cutter would also work).

Stitching irons: my pattern is made for 5mm stitching irons (5 stitches per inch). If you are willing to use any other size please make sure that the hole count is the same where it has to be the same: the pocket seams, the vertical seams, the bottom and both front and back panels.

Needles - according to your thread size, a pair of harness needles.

Mallet, grommet setter, rivet setter, hole puncher.

Instructions:

Print the pattern at actual size (100%). Use the reference on top of each page to make sure everything is printed correctly. Join the pages together. Cut the pieces.

Glue the zipper in the frame and sew it on.

Install the bottom (male) part of the snap on the pocket front. Sew the pocket gusset and the pocket front panel together. Make the buckle holder and the keeper. Notice where the buckle holder should be, mark its location on the stitching line. you can either sew it in the same seam, or sew it on later (I prefer the latter cause it is more durable). Don't forget to insert the buckle :)

Sew the pocket with the gusset onto the front panel. Install the top (female) part of the snap on the pocket flap. Sew the pocket flap on the front panel.

Sew the front panel of the fanny pack and the main gusset together. You must start at the corner hole and end at the corner hole on the other side. This is an overlapping seam and the bag's front is on top of the gusset.

Now the tricky part. Grab the back panel backing (sorry for the clumsy language - it is basically the liner of the back pocket, the part that divides the back pocket and the main compartment of the bag) . It should face same way as the back panel, grain side out.

Grab your D-rings, now you will have to stitch 4 layers of leather (if you are using heavier leather, skive some edges here to reduce overall thickness). Inserting a D-ring, fold the D-ring holder back into the seam between back panel and the pocket backing liner. Start on top, stitch the vertical seam. At the corner hole, start stitching the gusset and the back panel together. Repeat the same procedure with the D-ring on the other end.

Sewing the flap: Mark the location of the closure strap. Insert the flap between two layers of the back panel, stitch it on, inserting the closure strap into the same seam.

Make your waist strap - measure the desired length, you can do it whatever way you like, even using some old belt for it. If you use the double loop closure, you don't need those holes on the side 1.

Any questions or comments, e-mail me: lissius@gmail.com.

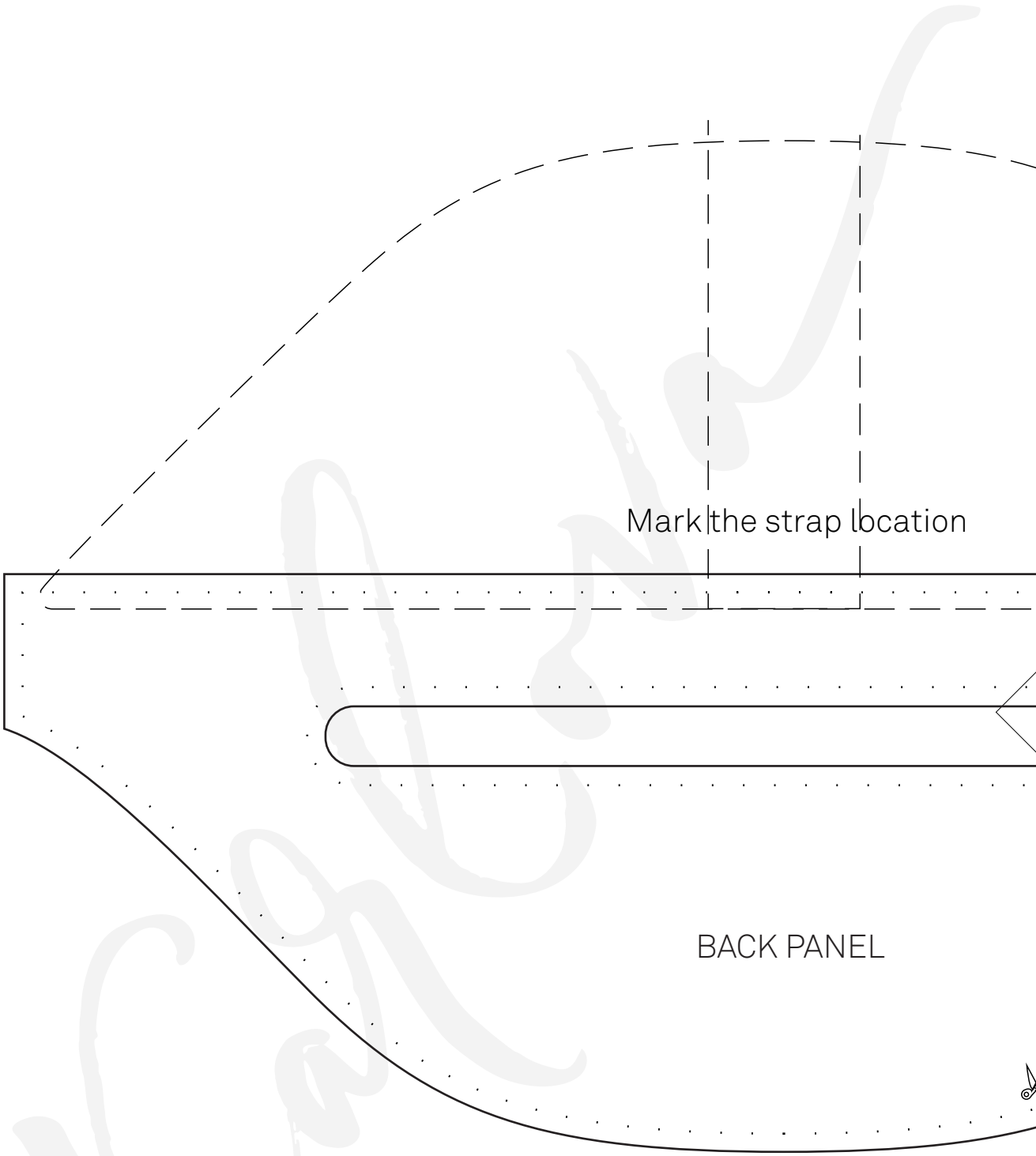
Join our Karlova Leatherwork Patterns Group on Facebook!
www.facebook.com/groups/karlovadesign



0cm 1cm 2cm 3cm 4cm 5cm

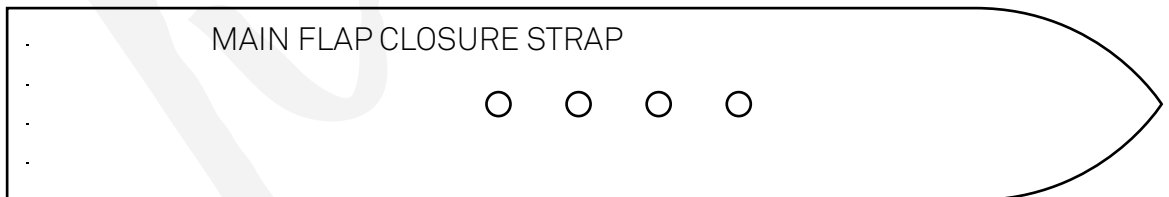
A-1

1in 2in 3in



Mark the strap location

BACK PANEL

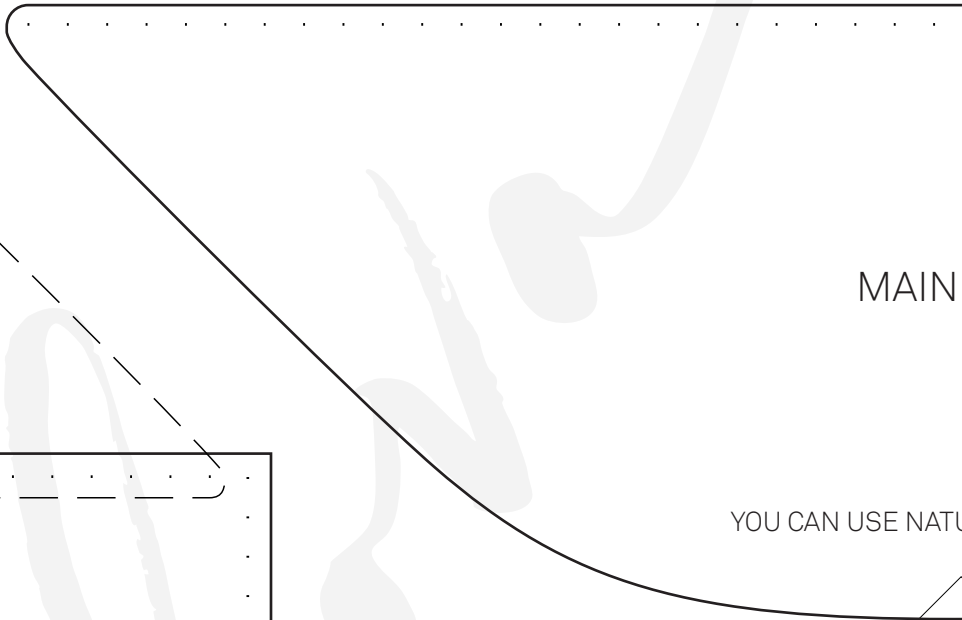
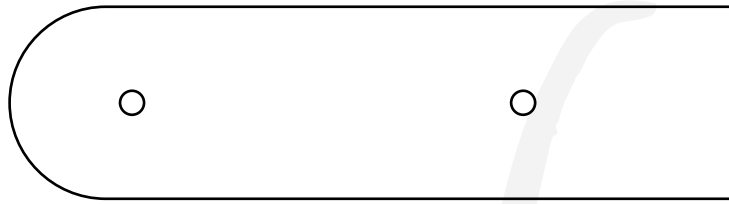


MAIN FLAP CLOSURE STRAP

0cm 1cm 2cm 3cm 4cm 5cm

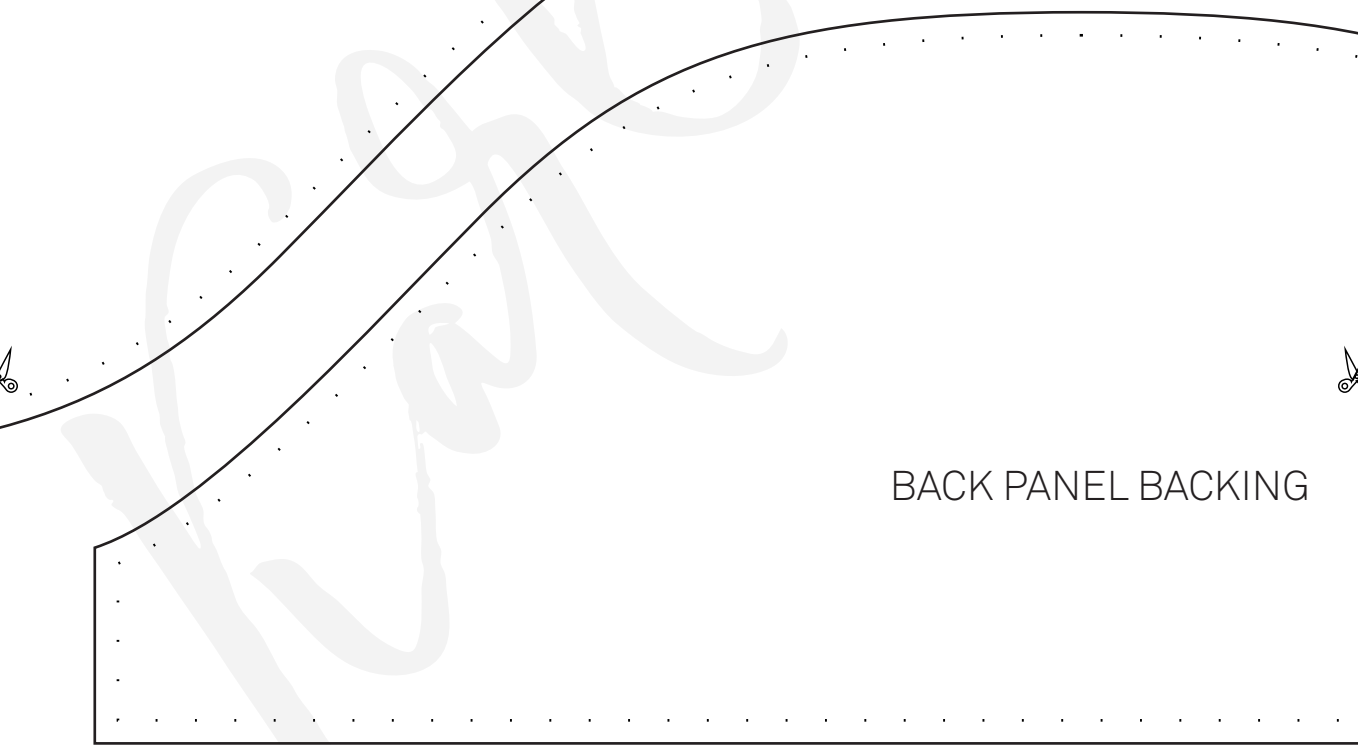
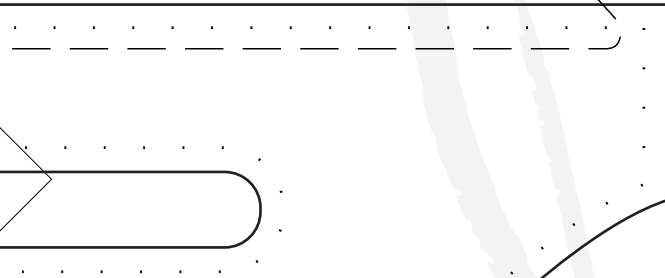
A-2

1in 2in 3in



MAIN

YOU CAN USE NATU



BACK PANEL BACKING

0cm 1cm 2cm 3cm 4cm 5cm

A-3

1in 2in 3in

WAIST STRAP SIDE 2
MEASURE THE DESIRED LENGTH

FLAP

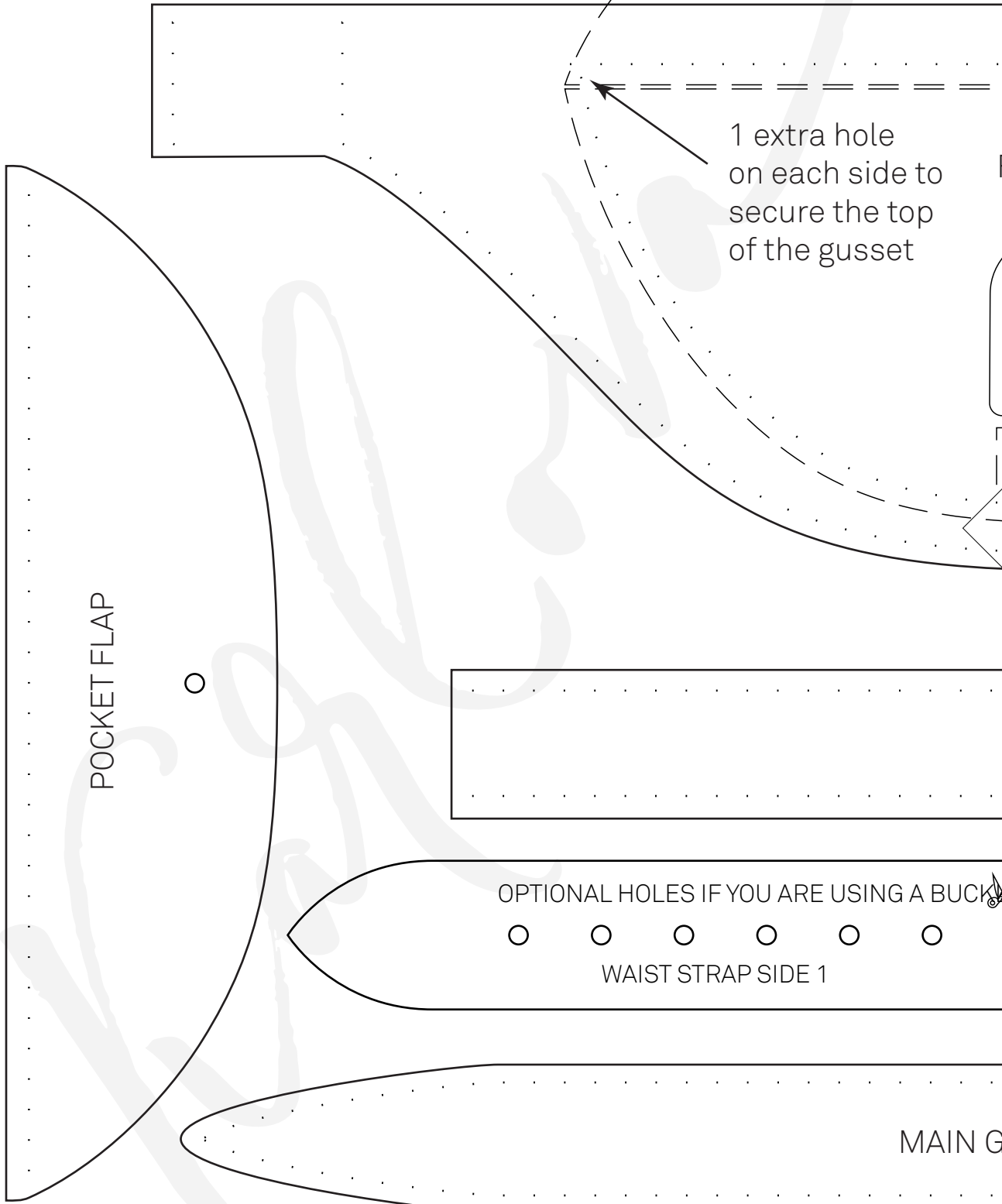
NATURAL EDGE HERE

POCKET FRONT

0cm 1cm 2cm 3cm 4cm 5cm

B-1

1in 2in 3in

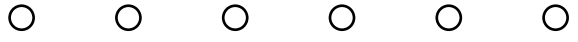


POCKET FLAP



1 extra hole on each side to secure the top of the gusset

OPTIONAL HOLES IF YOU ARE USING A BUCKLE



WAIST STRAP SIDE 1

MAIN GUSSET

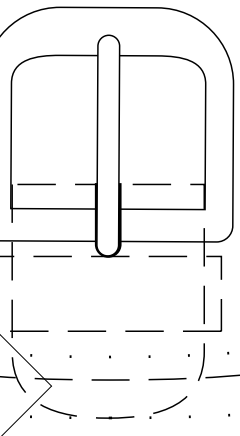
0cm 1cm 2cm 3cm 4cm 5cm

B-2

1in 2in 3in

STRAP KEEPER

FRONT PANEL



BUCKLE HOLDER

POCKET GUSSET

MEASURE THE DESIRED LENGTH. MINE WAS 30" BUT THIS WAS TO GIVE IT MORE SPACE

GUSSET

