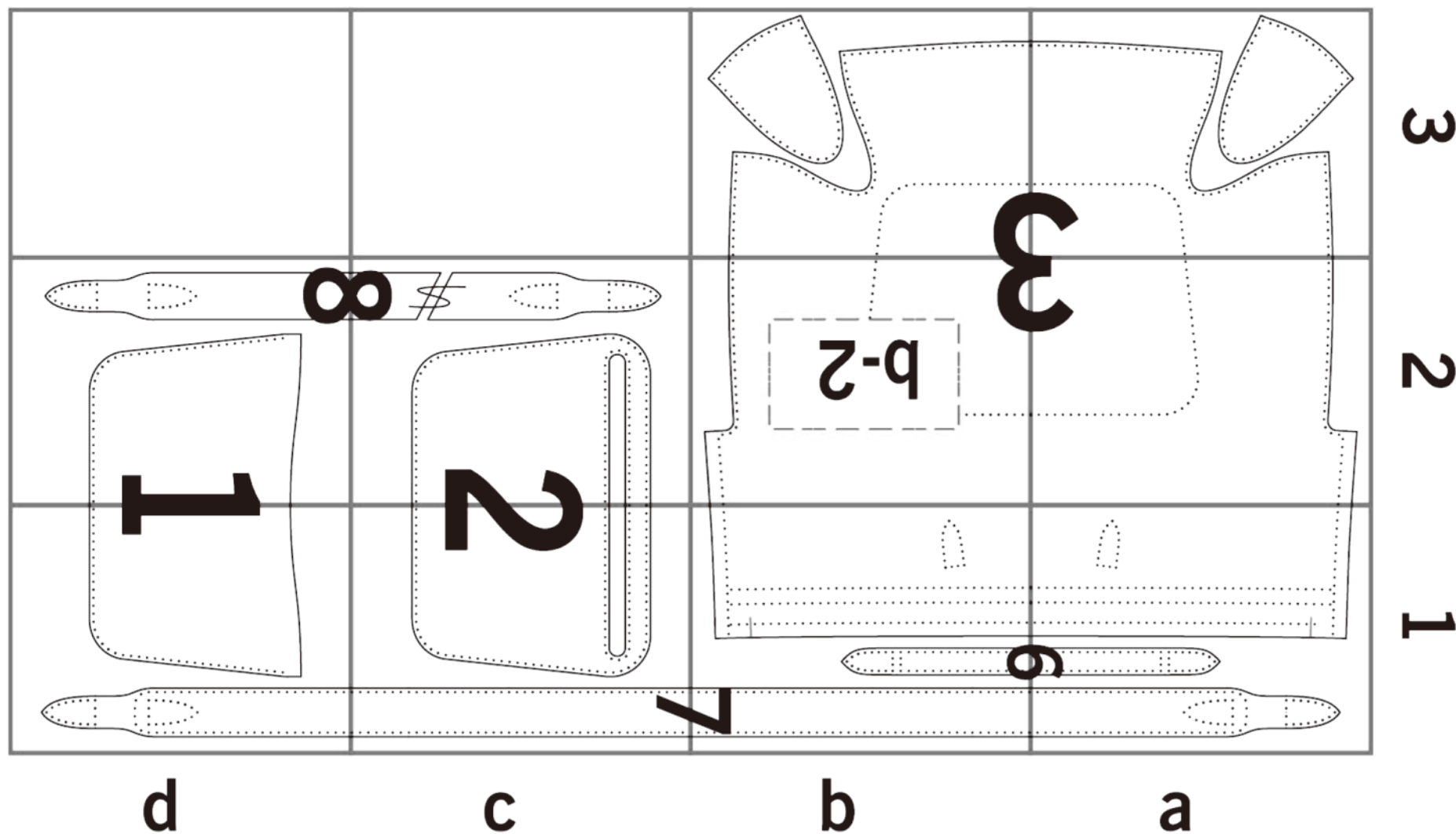
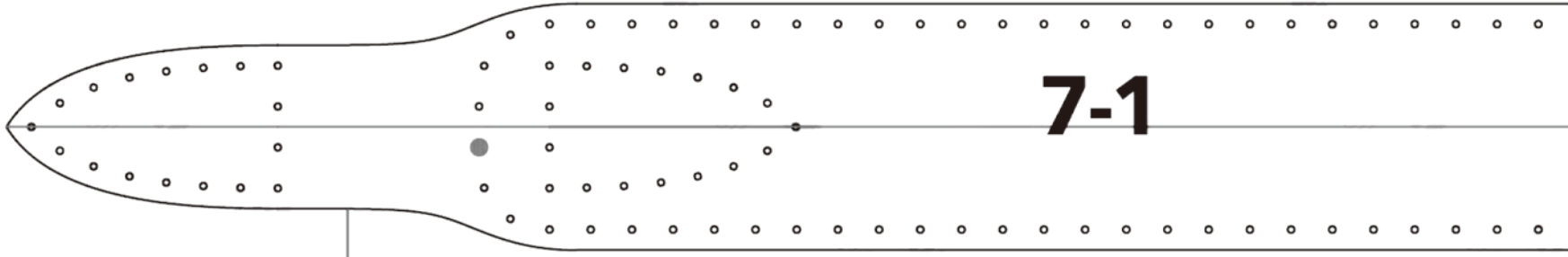


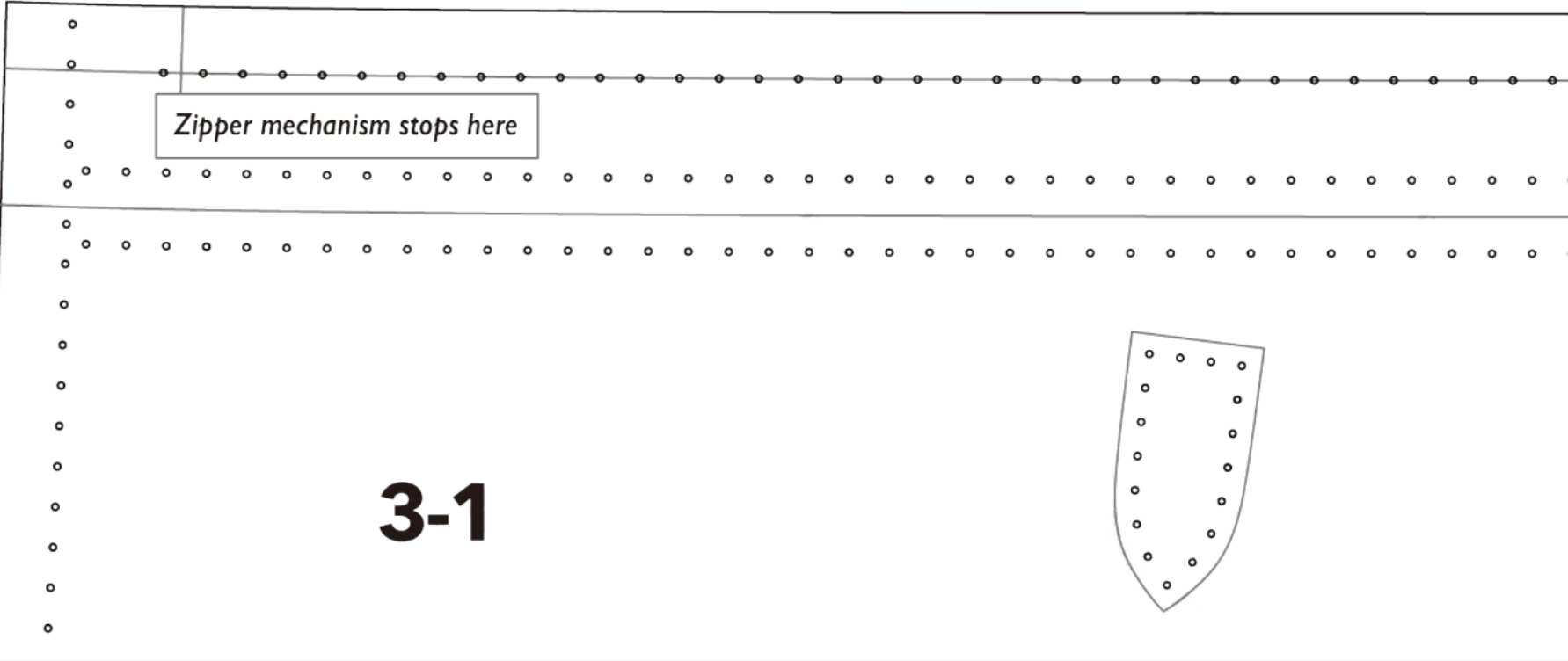
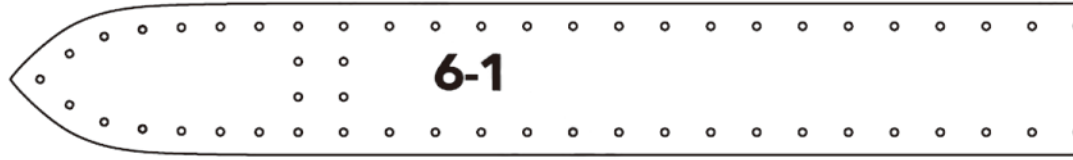
PATTERN ASSEMBLY CROSSBODY 61-A

LeatherDIYStudio斜挎手提包-大款
A4 1:1打印
皮小匠图纸 <http://www.pixiaojiang.com>





Materials: 5.5-6oz Firm Temper Leather
Quantity: x1



7-2

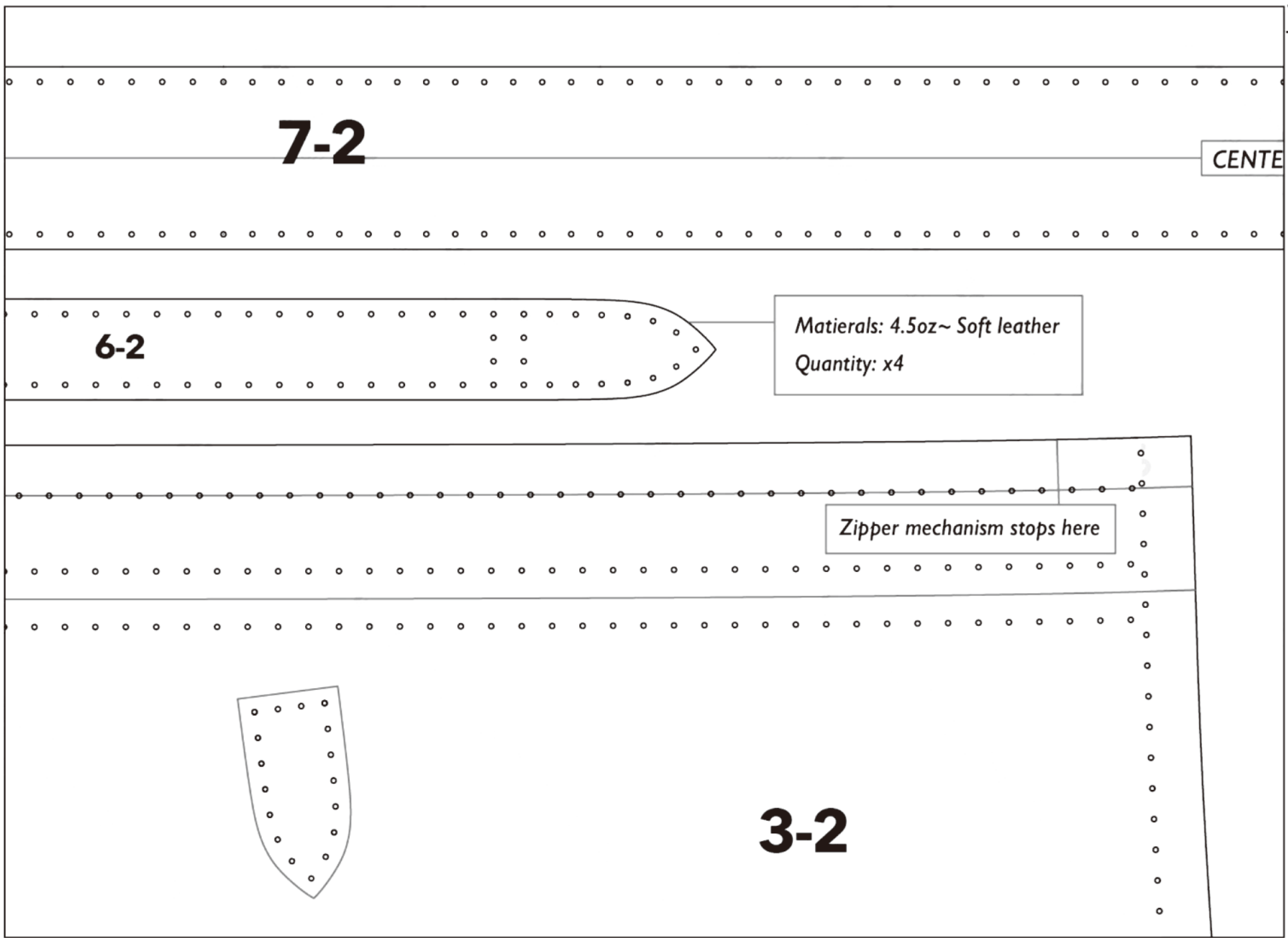
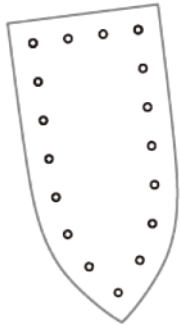
CENTE

6-2

Materials: 4.5oz~ Soft leather
Quantity: x4

Zipper mechanism stops here

3-2



R LINE

7-3

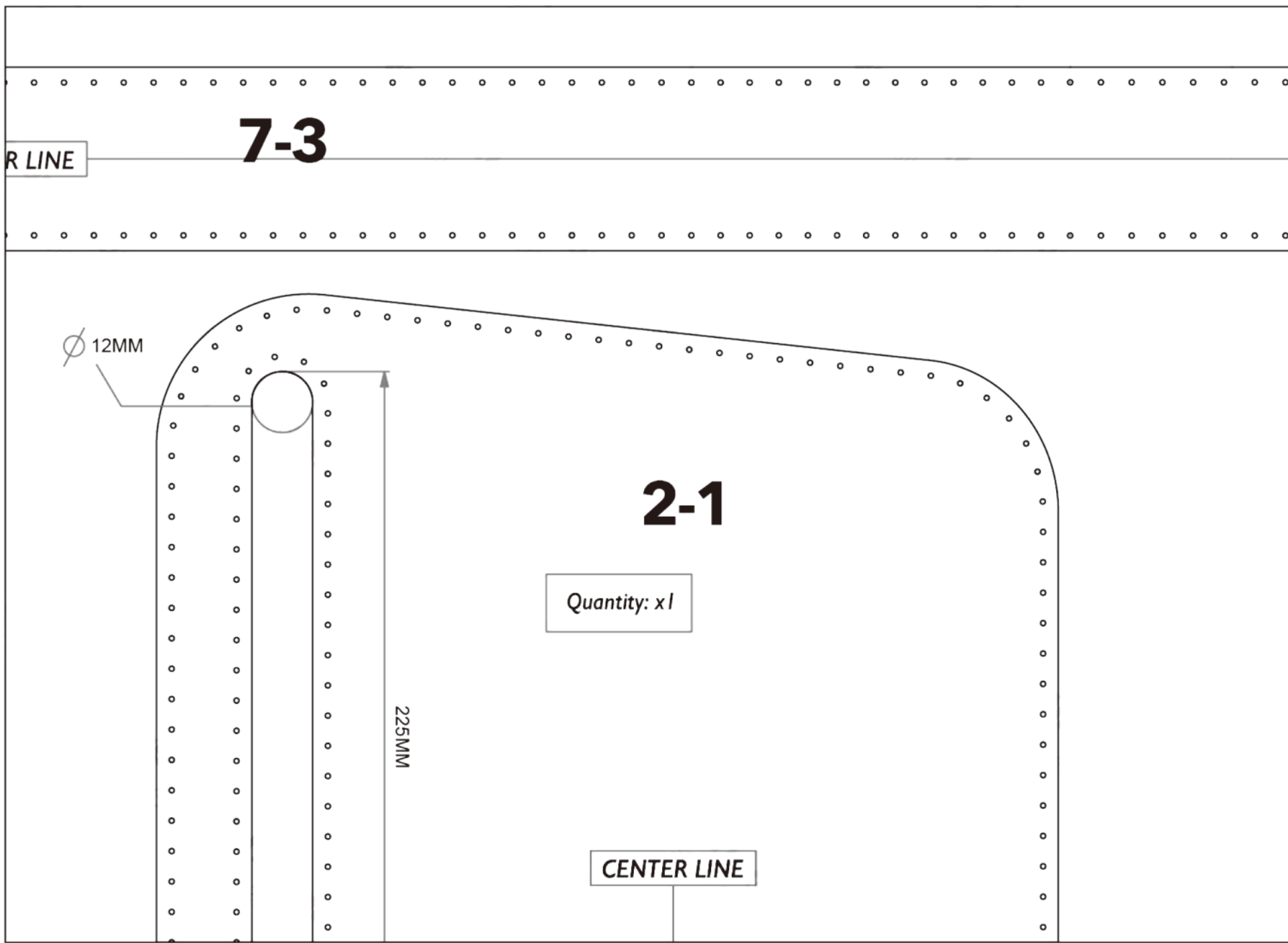
∅ 12MM

2-1

Quantity: x1

225MM

CENTER LINE



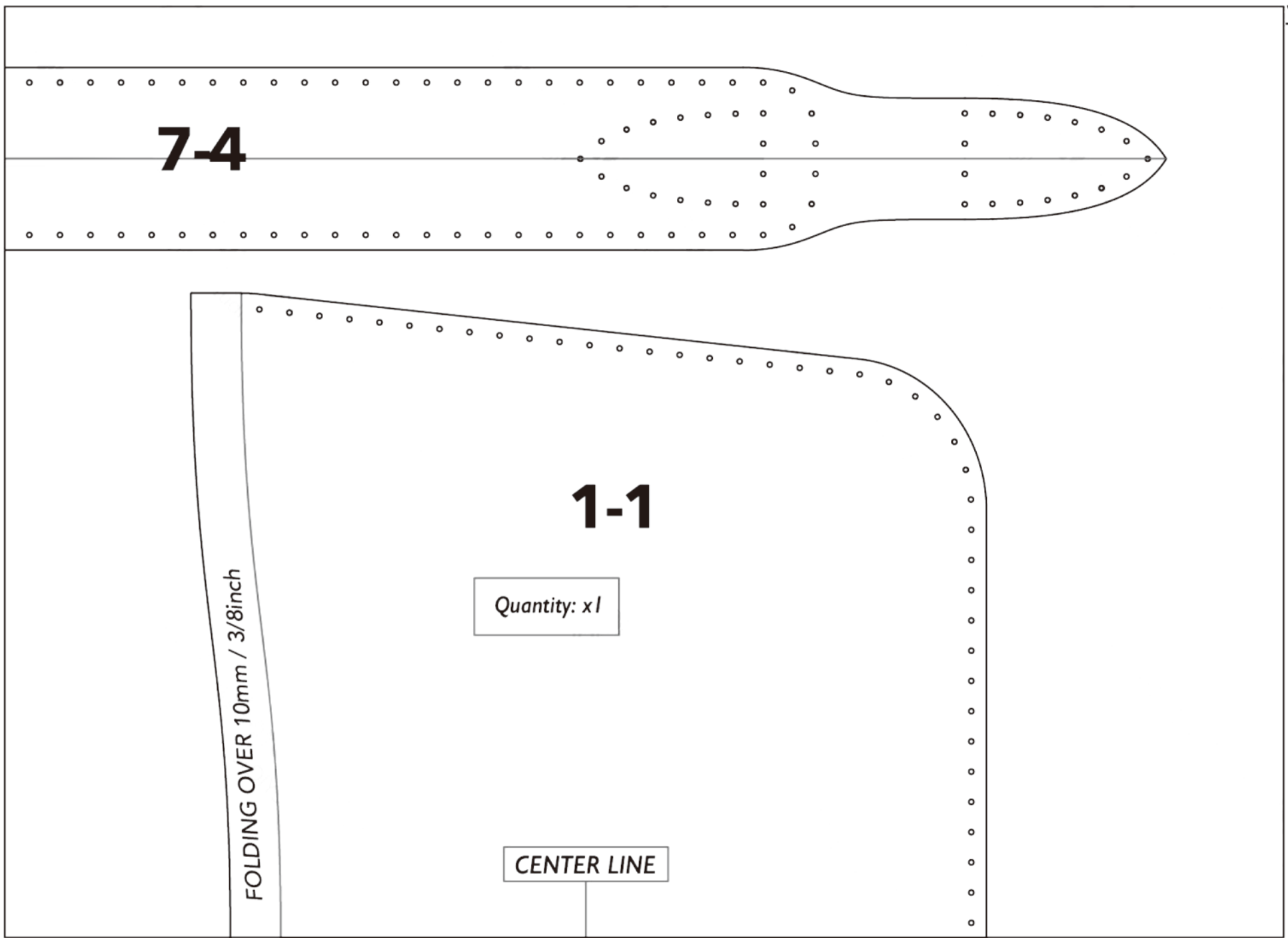
7-4

1-1

Quantity: x1

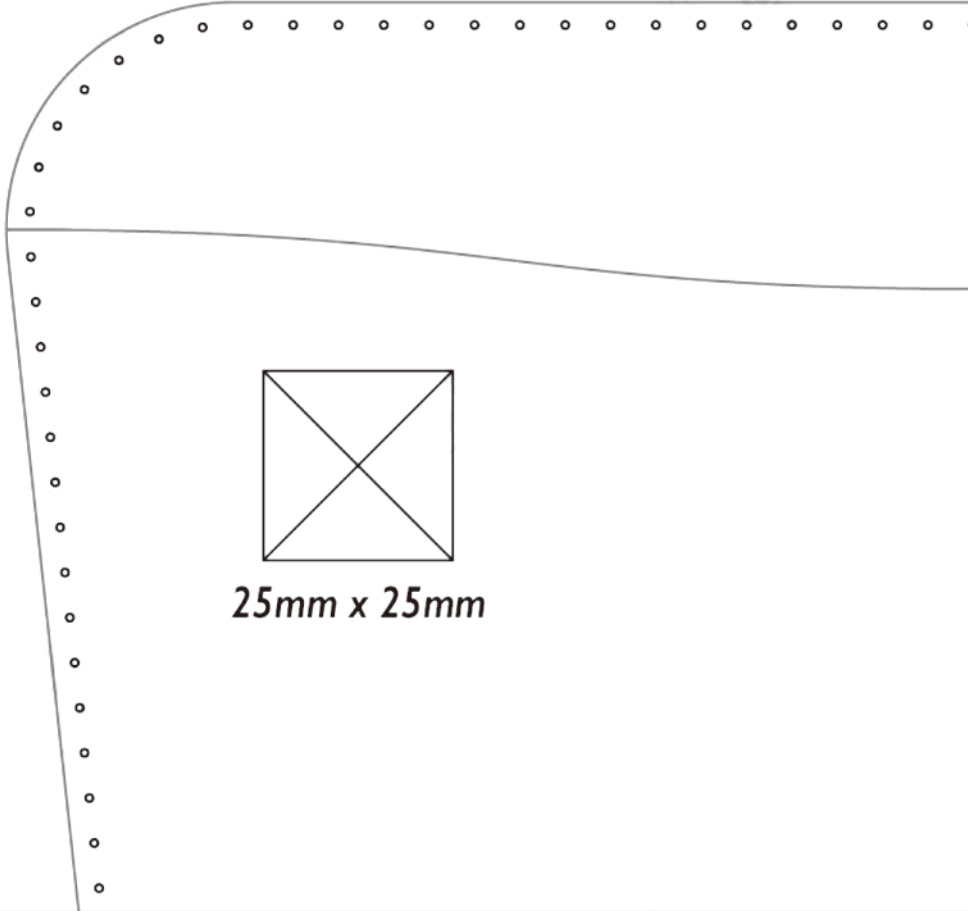
CENTER LINE

FOLDING OVER 10mm / 3/8inch



3-3







Materials: 4.5-5.5oz Soft temper leathers
Quantity: x2



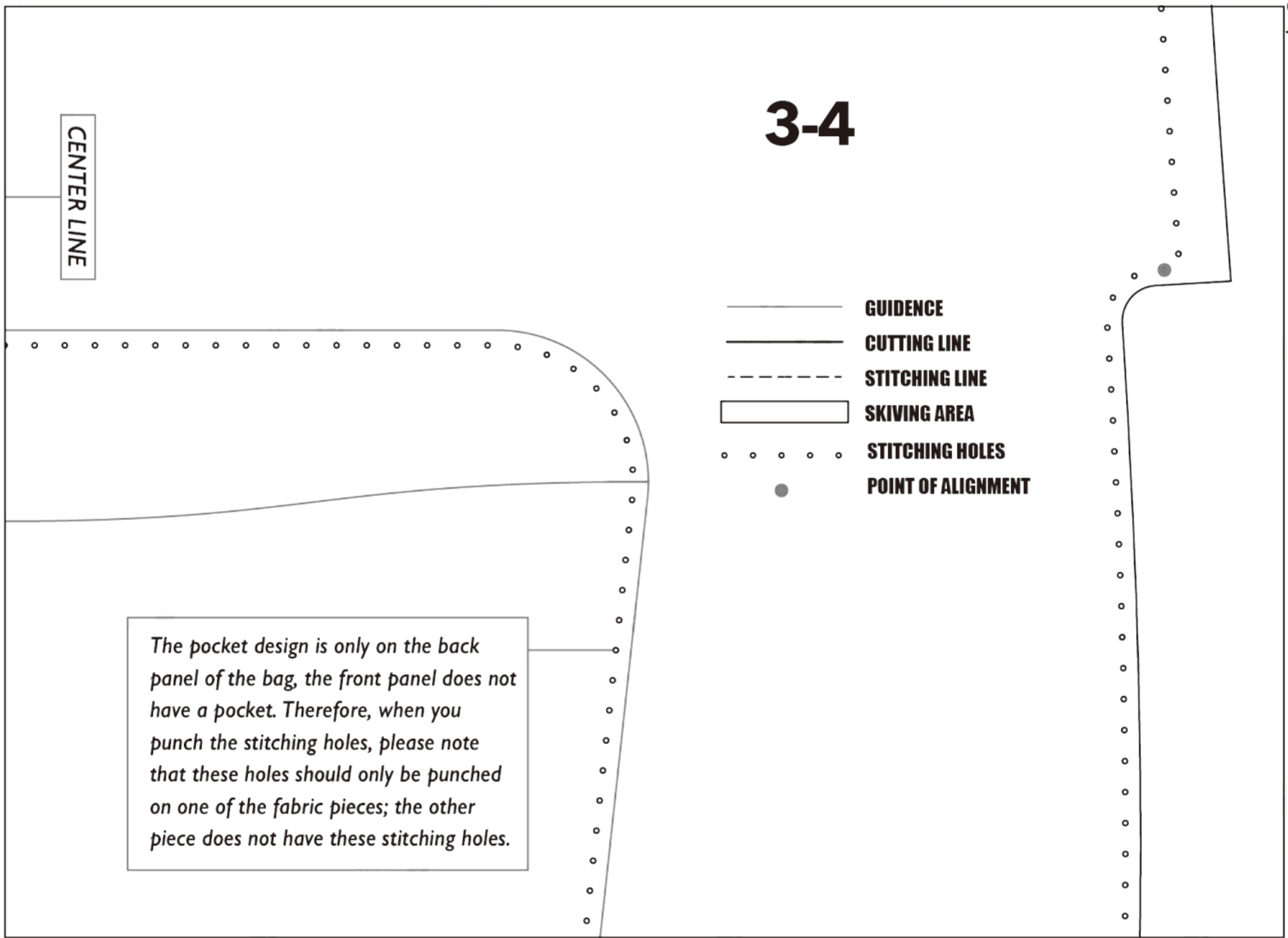
25mm x 25mm

3-4

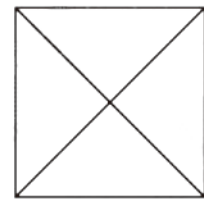
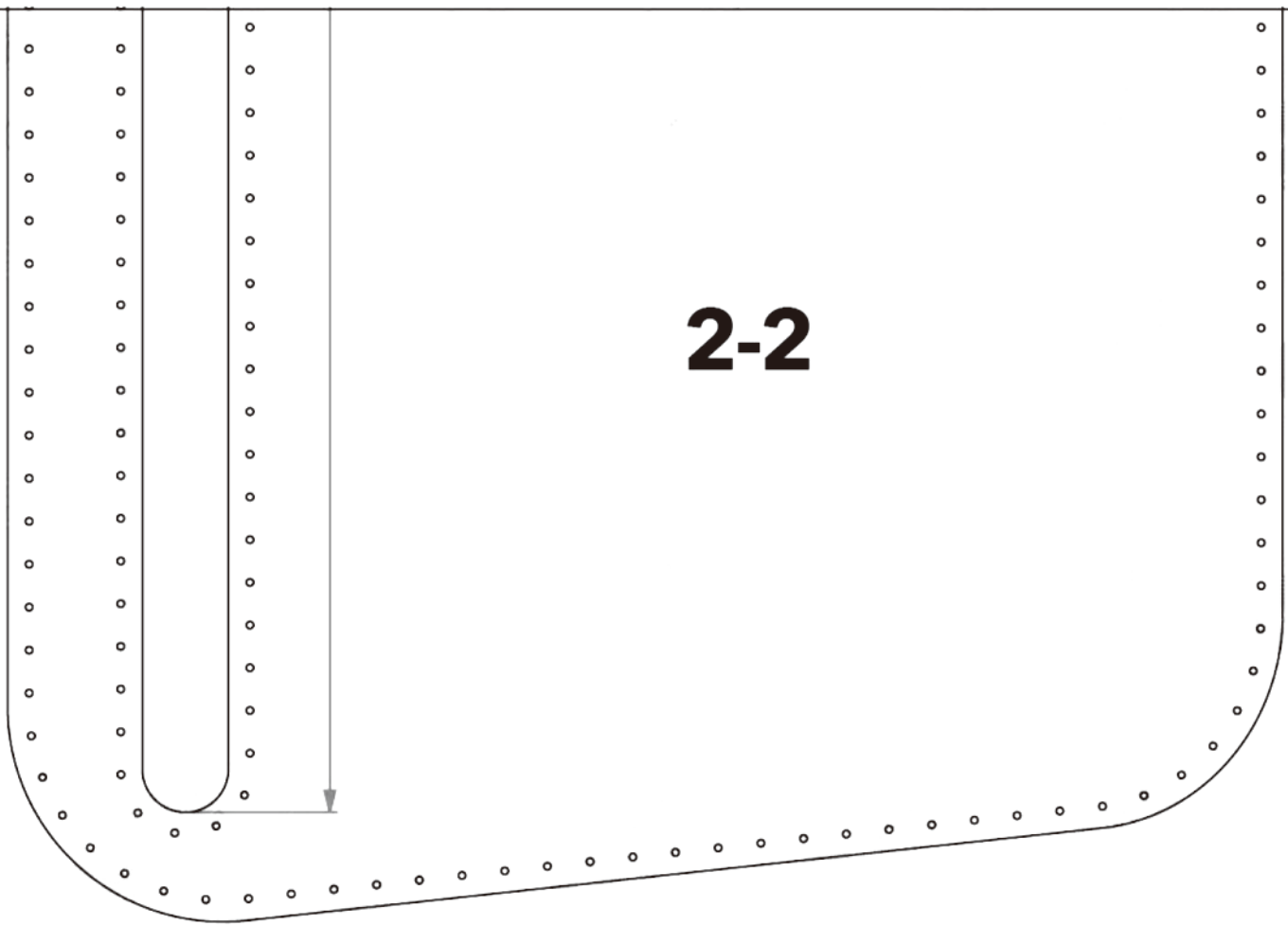
CENTER LINE

-  GUIDANCE
-  CUTTING LINE
-  STITCHING LINE
-  SKIVING AREA
-  STITCHING HOLES
-  POINT OF ALIGNMENT

The pocket design is only on the back panel of the bag, the front panel does not have a pocket. Therefore, when you punch the stitching holes, please note that these holes should only be punched on one of the fabric pieces; the other piece does not have these stitching holes.



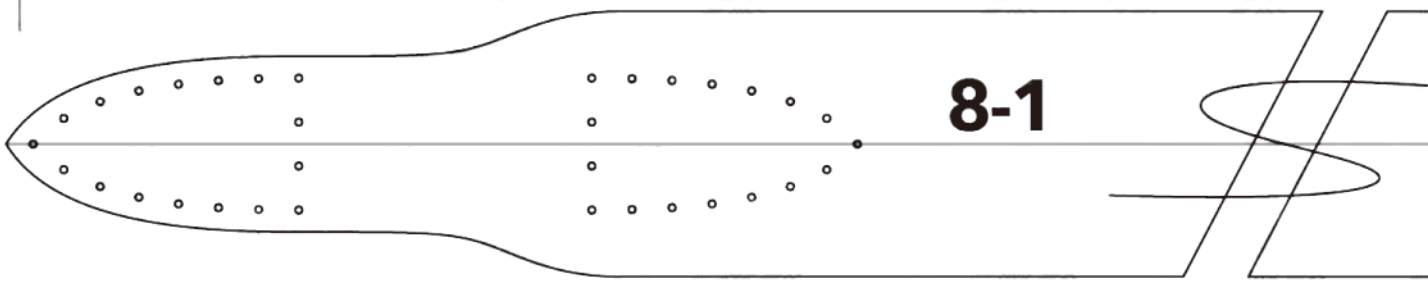
2-2



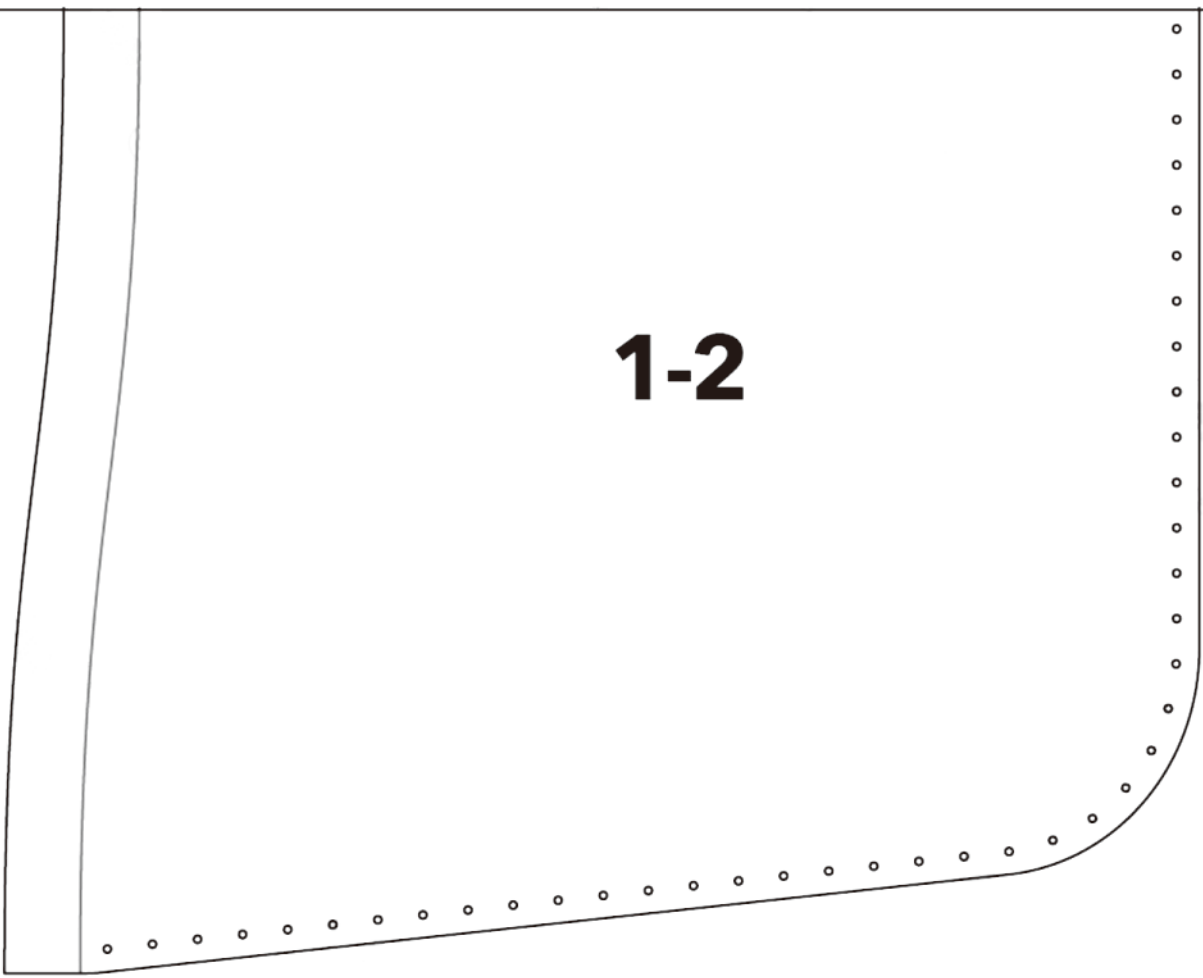
25mm x 25mm

Since this is a non-adjustable shoulder strap, it is recommended to cut the length according to personal needs. (In our case, we chose 49inch for the total length)

8-1



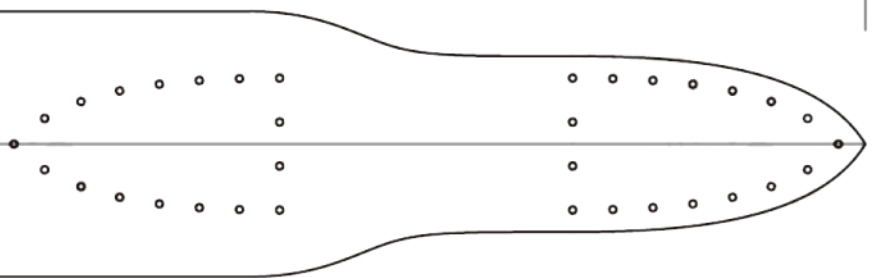
1-2

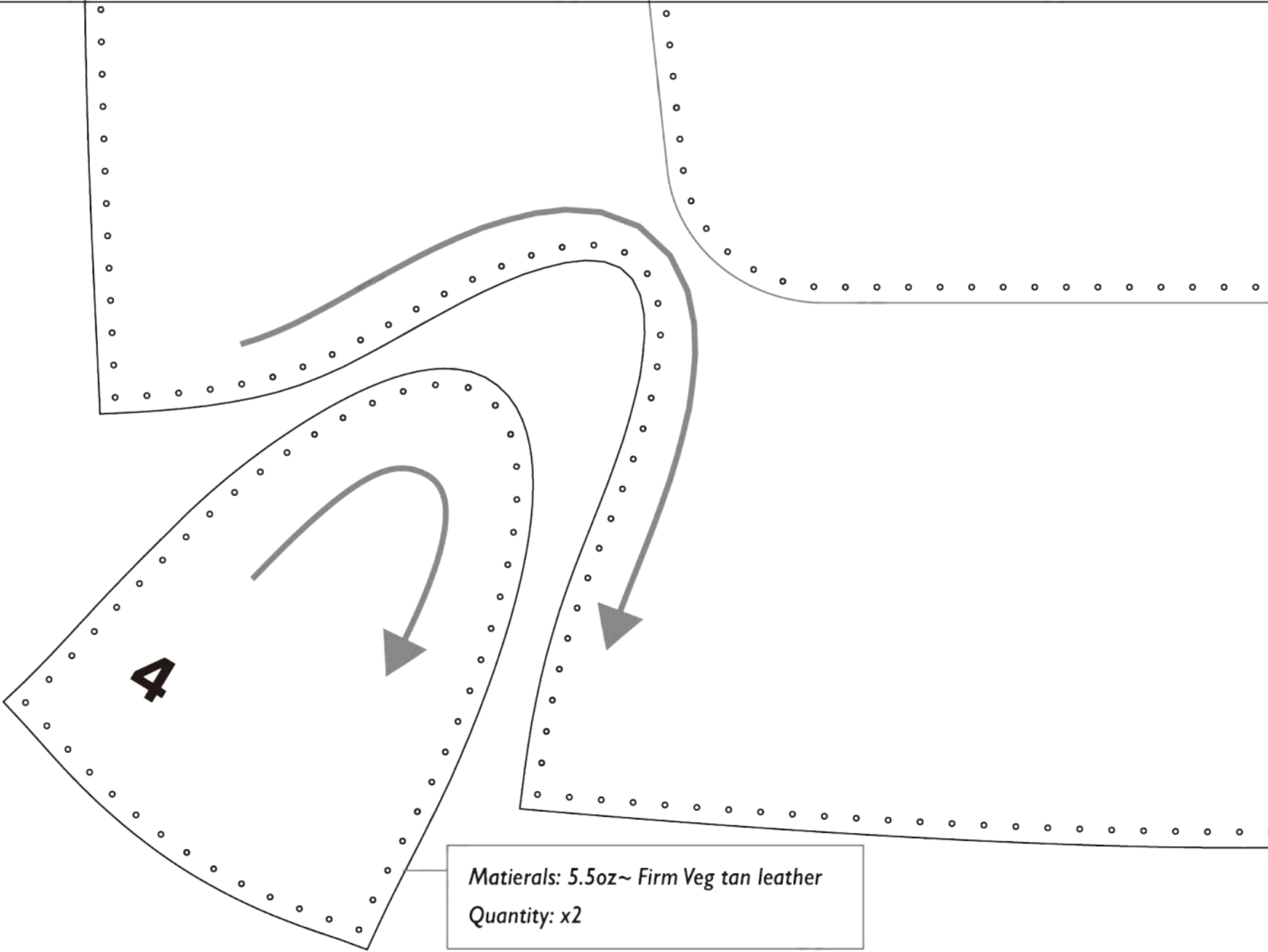


8-2

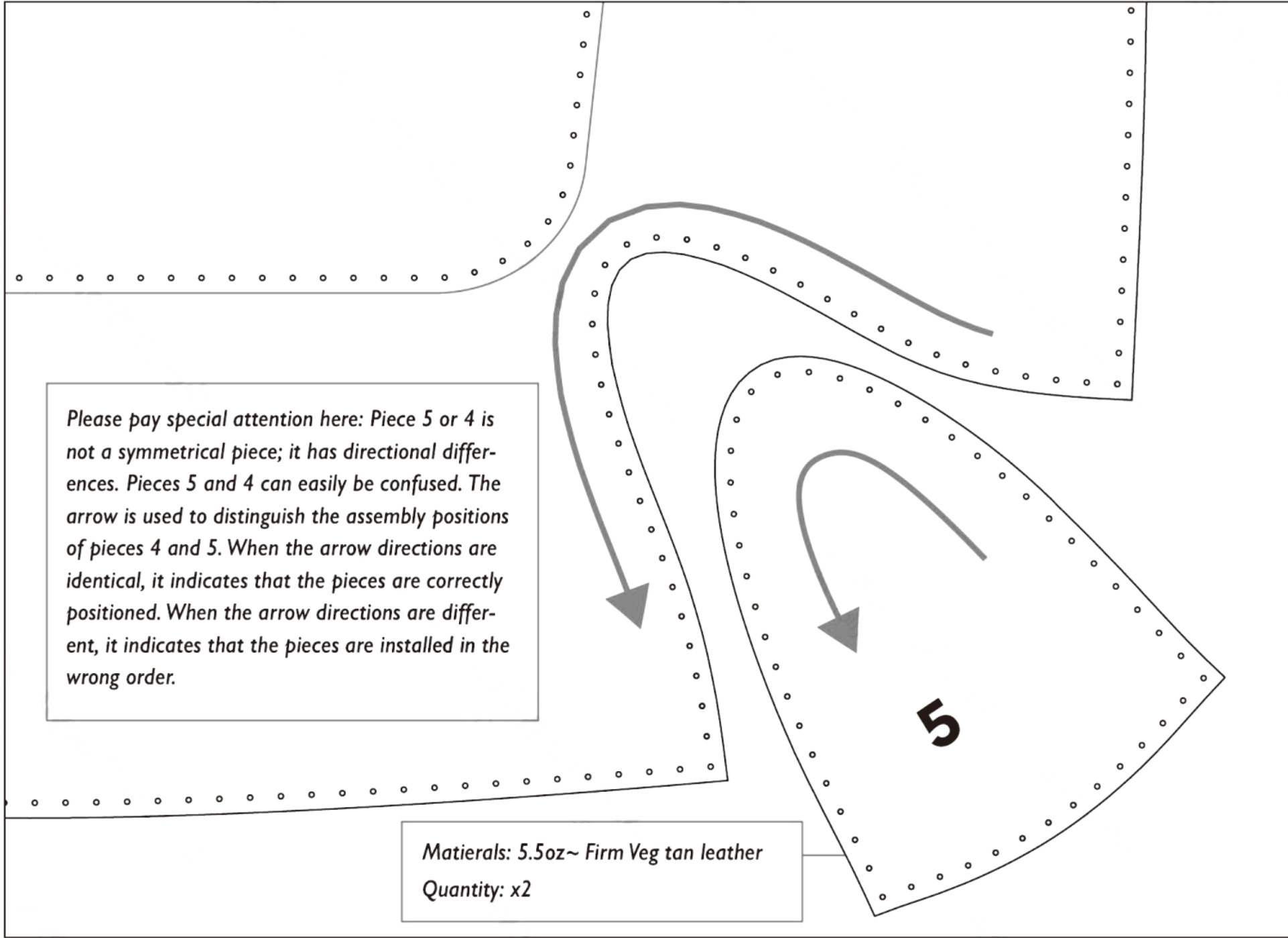
35MM

Material: 5.5-6Oz Soft leathers
Quantity: x1





Materials: 5.5oz~ Firm Veg tan leather
Quantity: x2



Please pay special attention here: Piece 5 or 4 is not a symmetrical piece; it has directional differences. Pieces 5 and 4 can easily be confused. The arrow is used to distinguish the assembly positions of pieces 4 and 5. When the arrow directions are identical, it indicates that the pieces are correctly positioned. When the arrow directions are different, it indicates that the pieces are installed in the wrong order.

*Materials: 5.5oz~ Firm Veg tan leather
Quantity: x2*