

[Video tutorial](#)

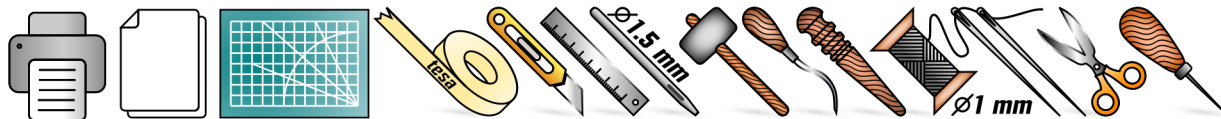
[Facebook community](#)

[Website](#)

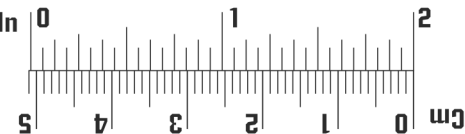
[Etsy patterns shop](#)

[Instagram](#)

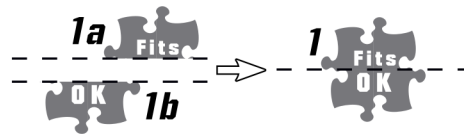
# The Bomb dopp bag pattern



Measure  
for  
accuracy



Match

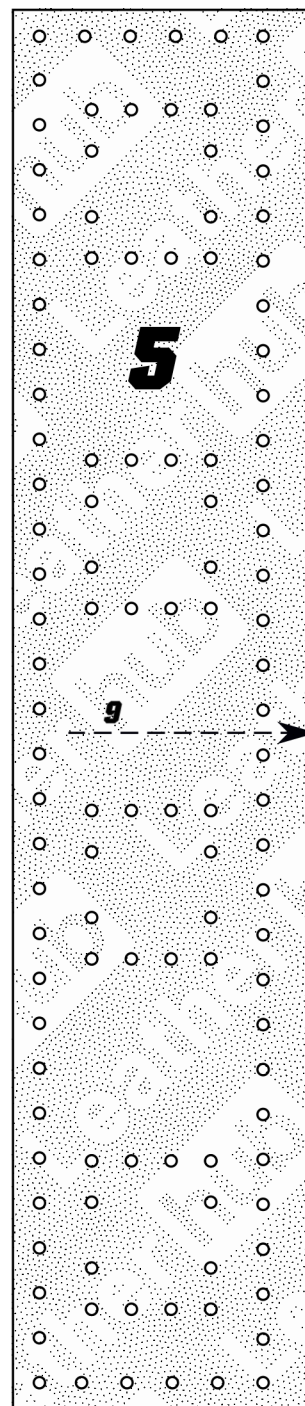
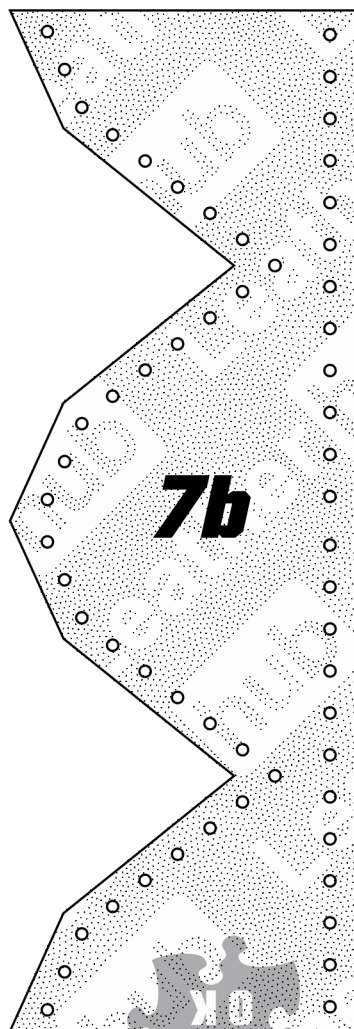
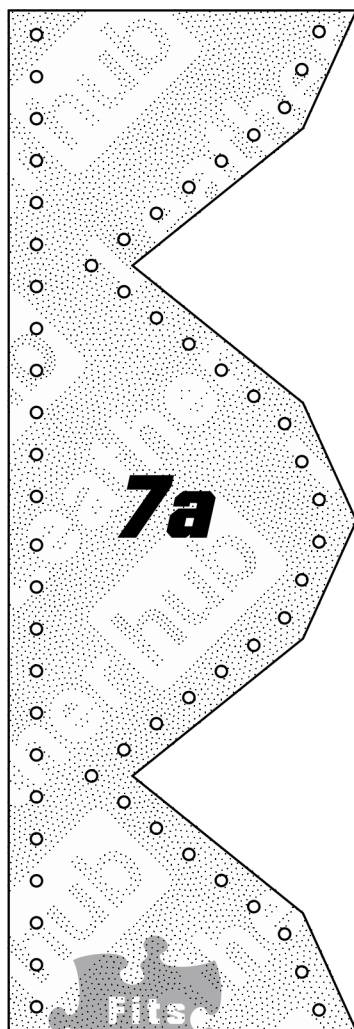


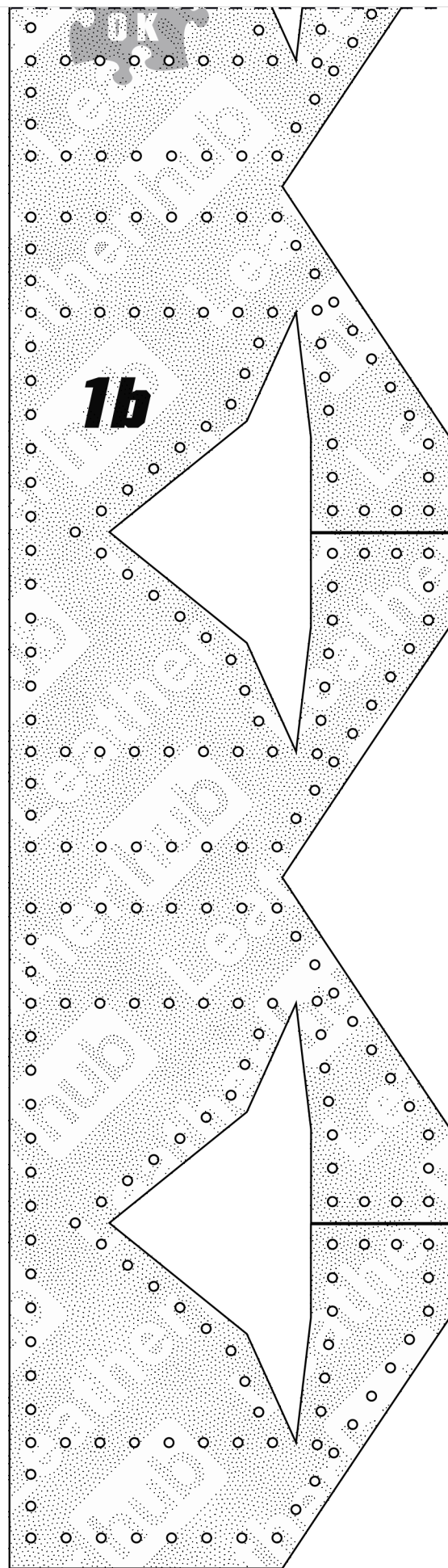
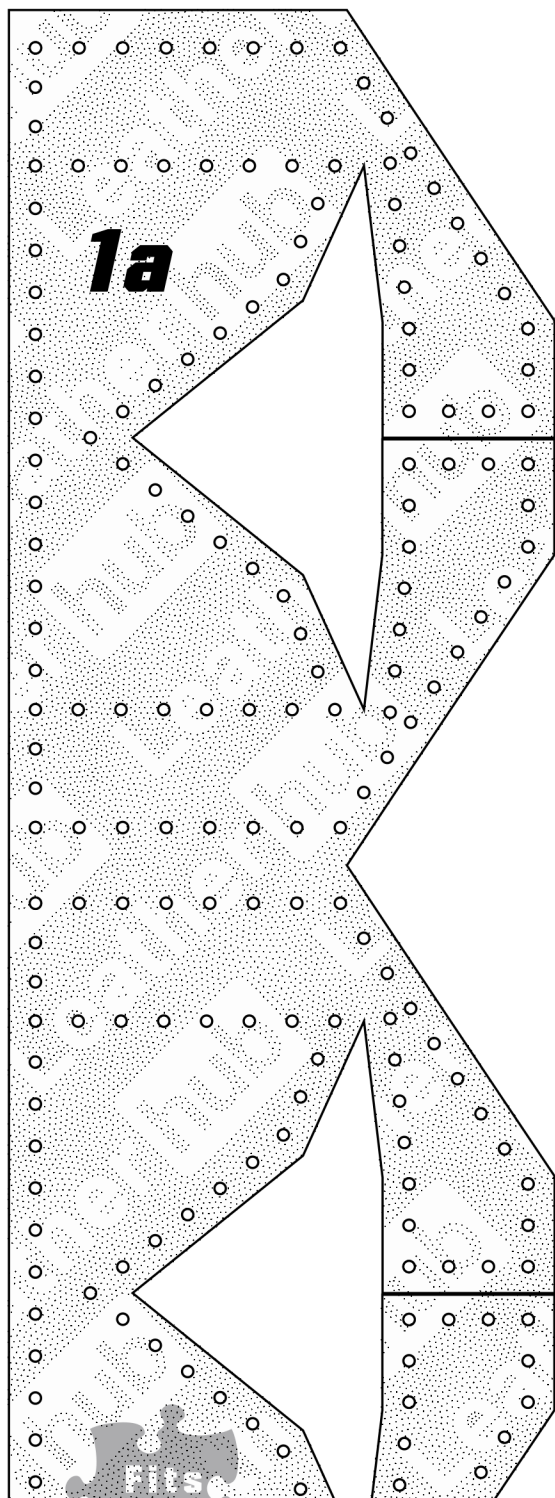
Punch



Cut

- \* Print on any type of paper by checking **Actual size** and selecting **US Letter** as the printing format.
- \* You will also require a 200 mm long zipper for the closure of the bag.







**4b**

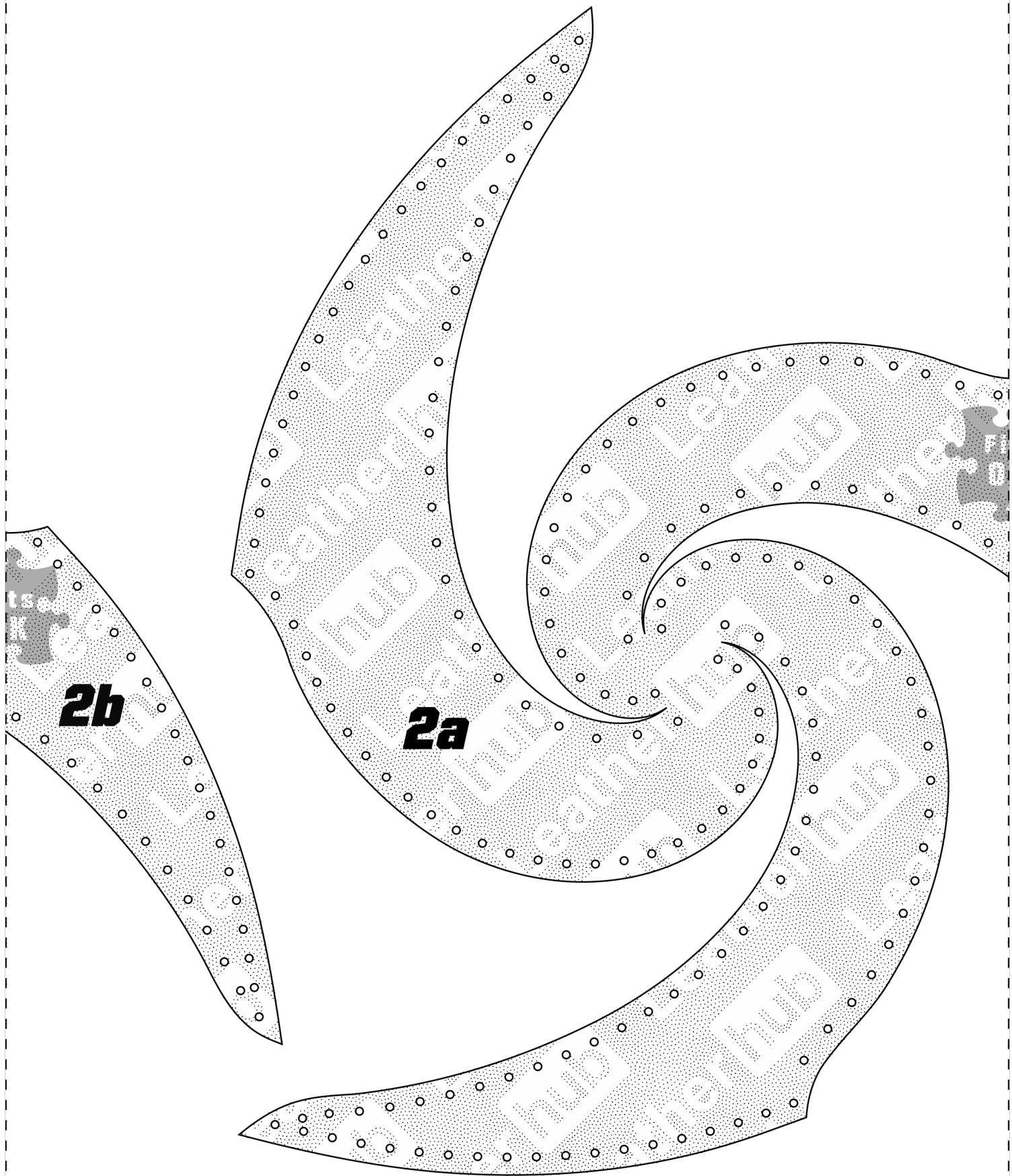
**3a**



**3b**

**4a**

**6**



**2b**

**2a**