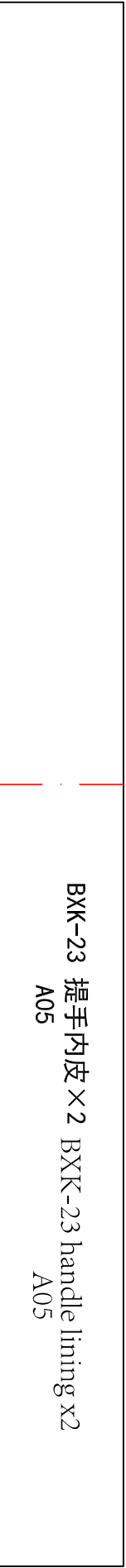
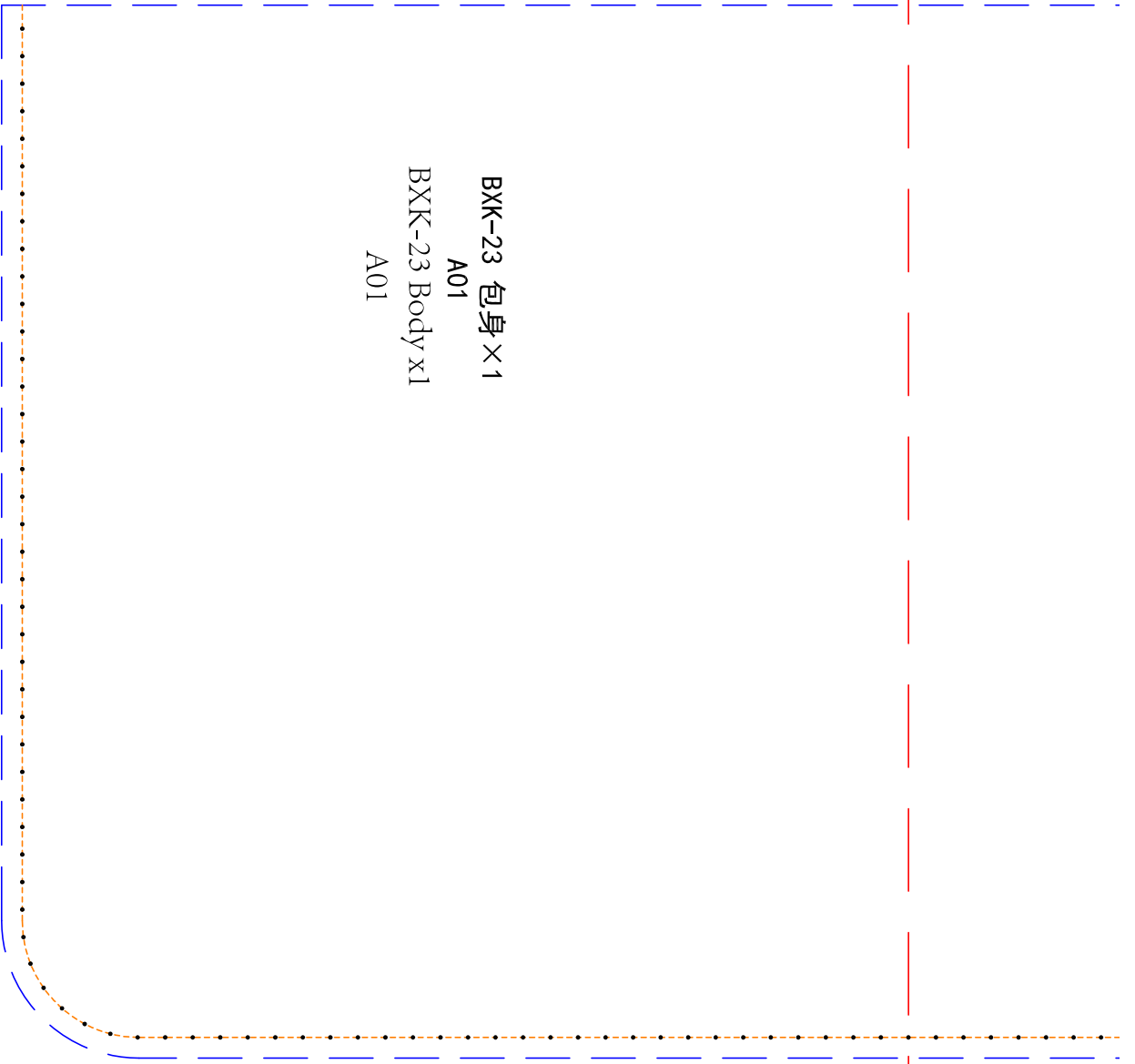


BKK-23 包侧连接皮 ×2 BKK-23 Side lid strengthen leather x2  
 A03 (接A01和A02) A03 (joint A01 & A02)



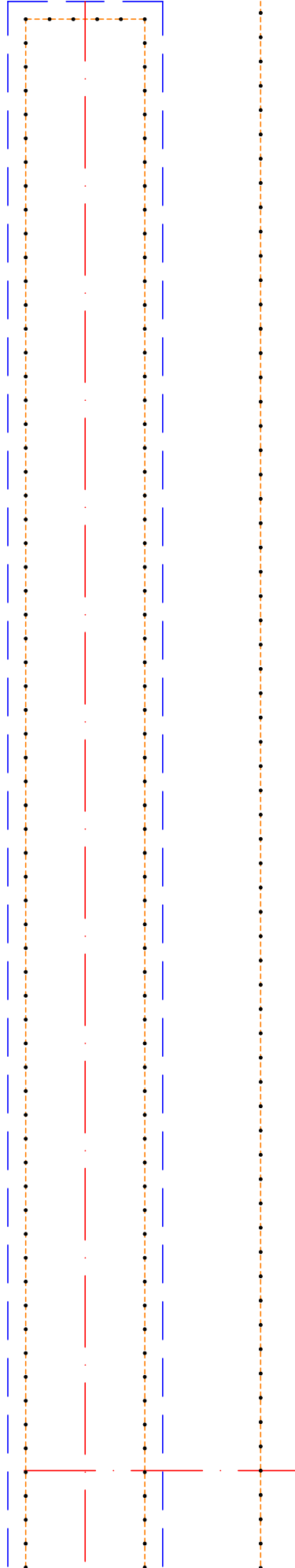
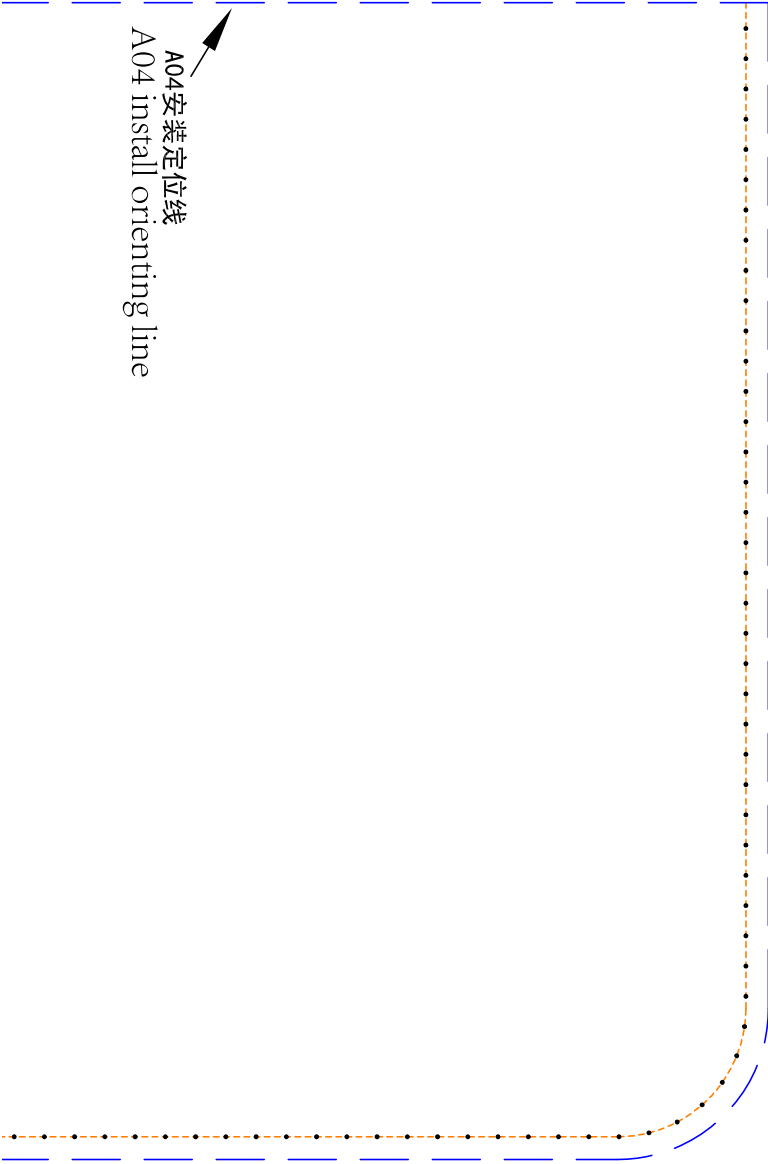
BKK-23 提手内皮 ×2 BKK-23 handle lining x2  
 A05 A05

BKK-23 包身 × 1  
A01  
BKK-23 Body x1  
A01



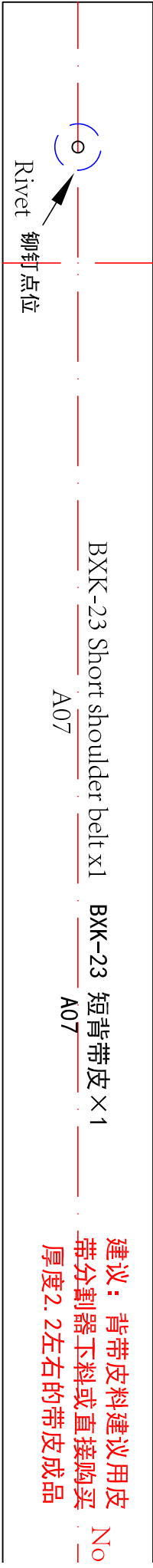


A04 安装定位线  
A04 install orienting line



B2

BX



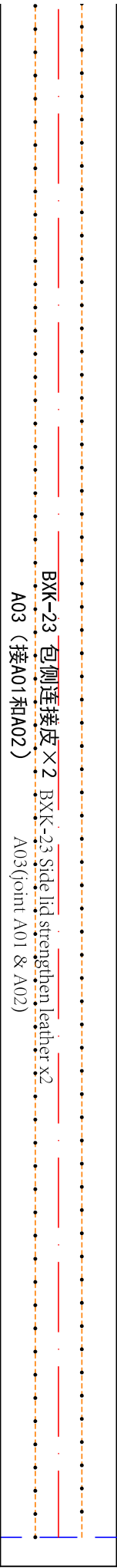
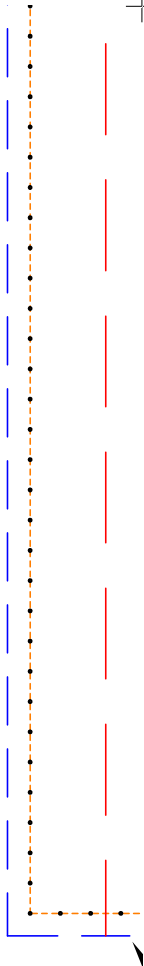
BKK-23 Short shoulder belt x1 A07

BKK-23 短背带皮 x1 A07

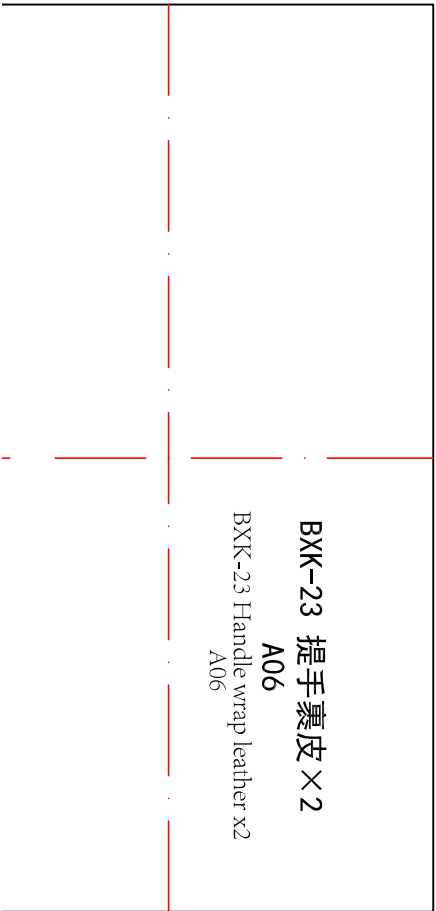
建议：背带皮料建议用皮  
带分割器下料或直接购买  
厚度2.2左右的带皮成品

建议：背带皮料建议  
带分割器下料或直接  
厚度2.2左右的带皮

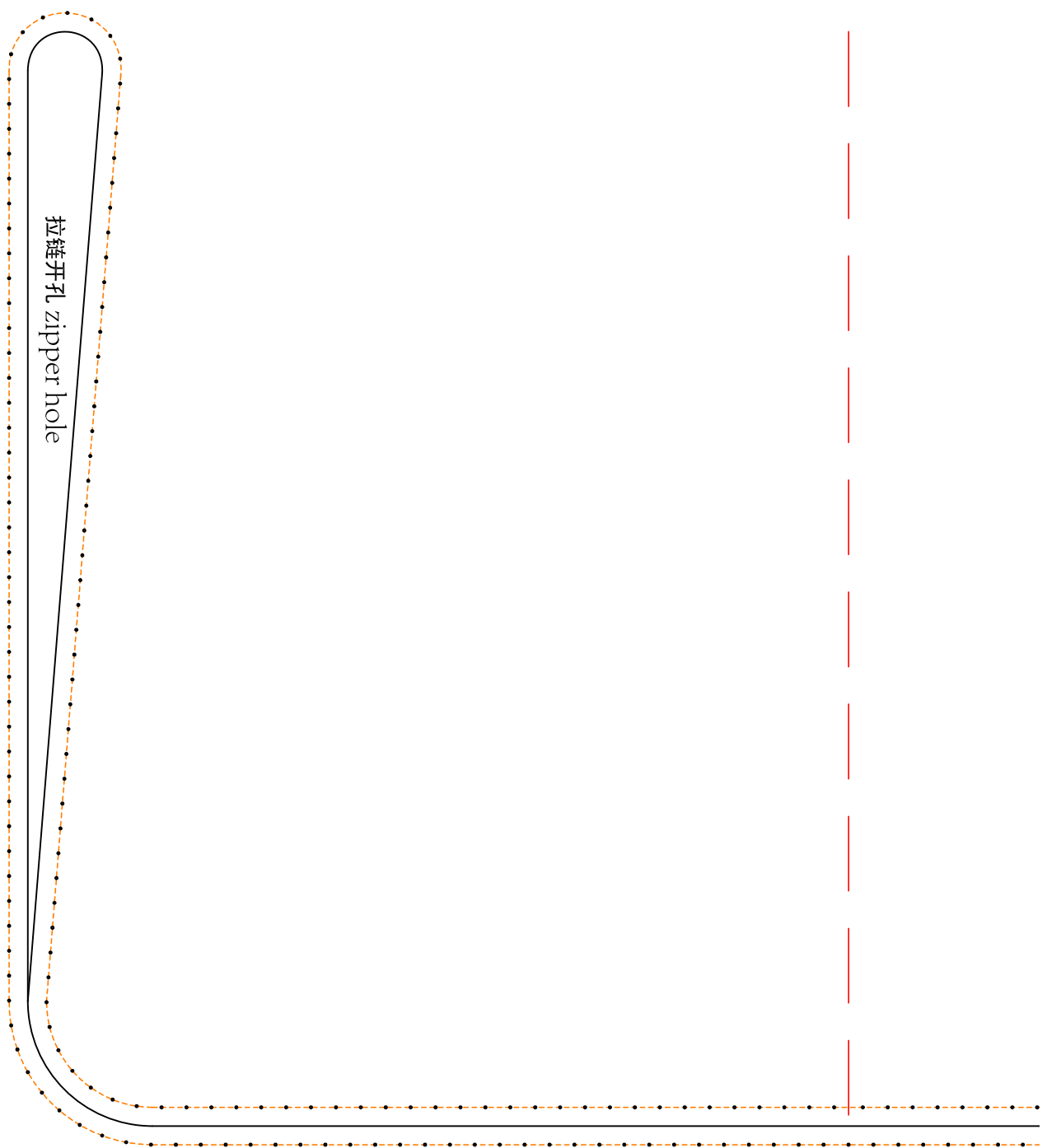




BKK-23 包侧连接皮 X 2 BKK-23 Side lid strengthen leather x2  
 A03 (接A01和A02) A03(joint A01 & A02)



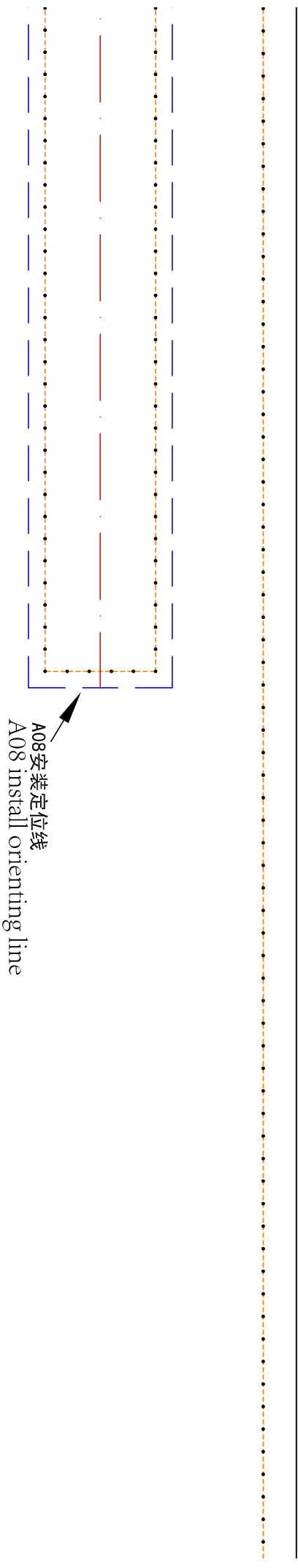
BKK-23 提手裹皮 X 2  
 A06  
 BKK-23 Handle wrap leather x2  
 A06



A08 安装定位线  
A08 install orienting line



K-23 包身 × 1  
A01  
KK-23 Body x1

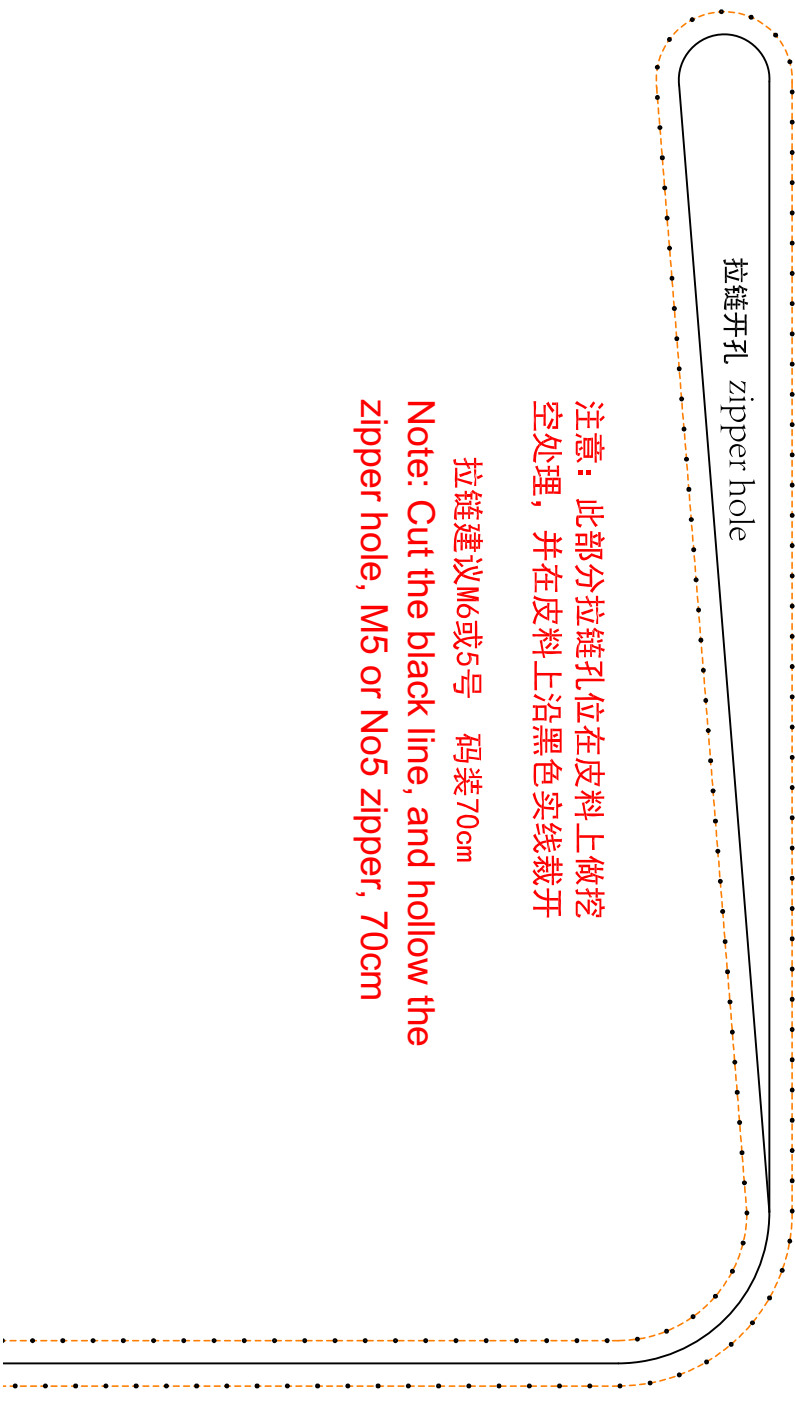


拉链开孔 zipper hole

注意：此部分拉链孔位在皮料上做挖空处理，并在皮料上沿黑色实线裁开

拉链建议M6或5号 码装70cm

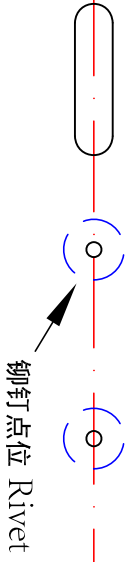
Note: Cut the black line, and hollow the zipper hole, M5 or No5 zipper, 70cm



用品  
购买 Note: Use leather strip cutter  
成品

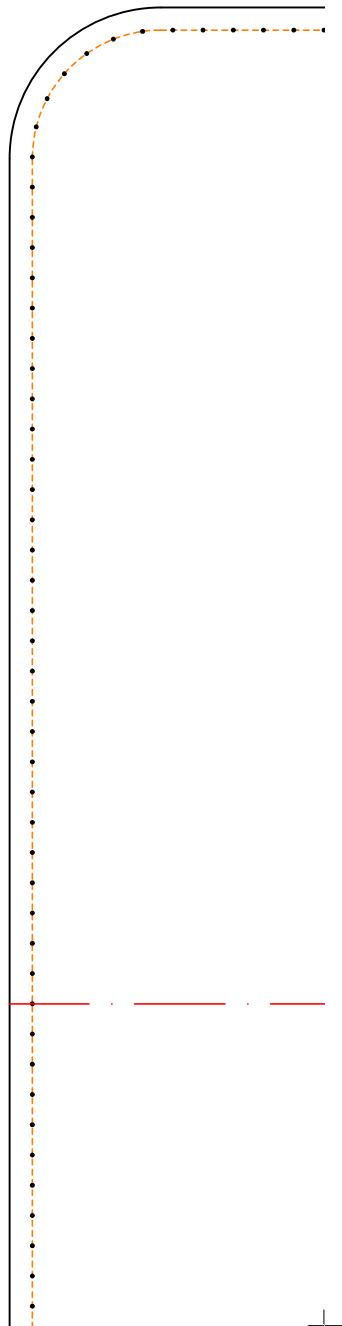
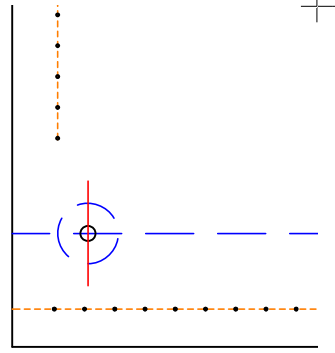
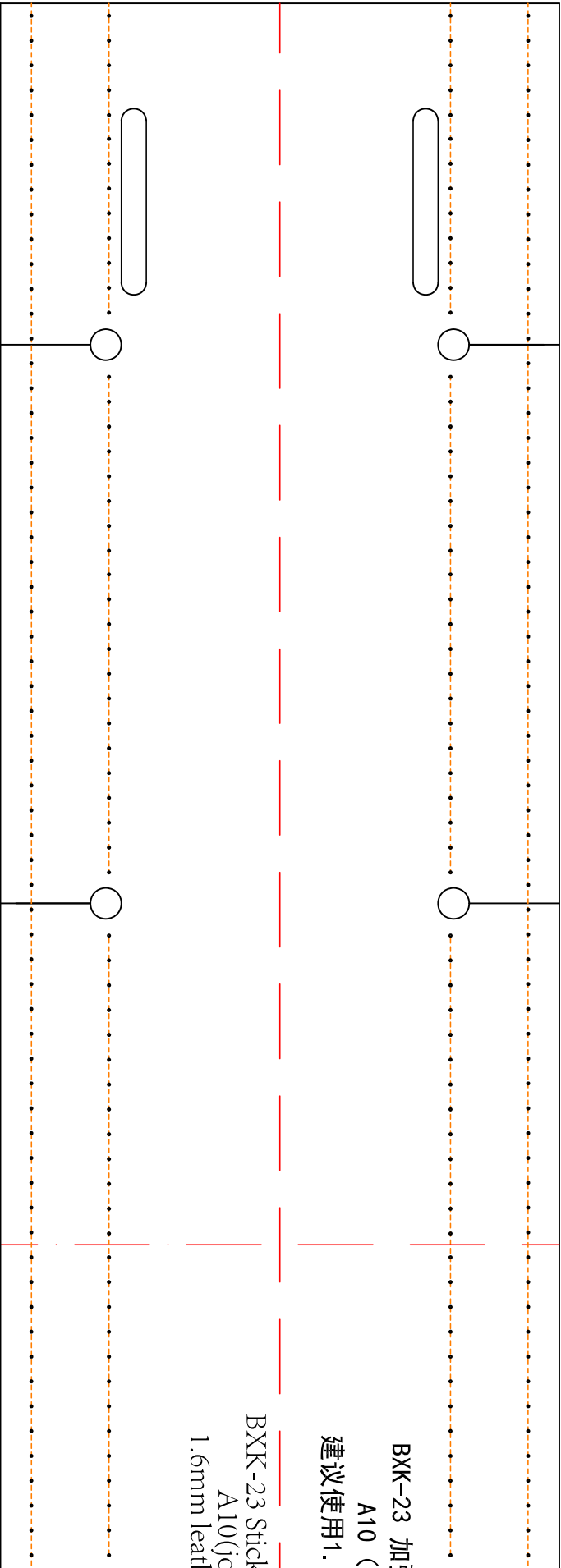
BKK-23 长背带皮 (包身两侧扣带) ×3  
A08 BKK-23 Long shoulder belt x3  
A08

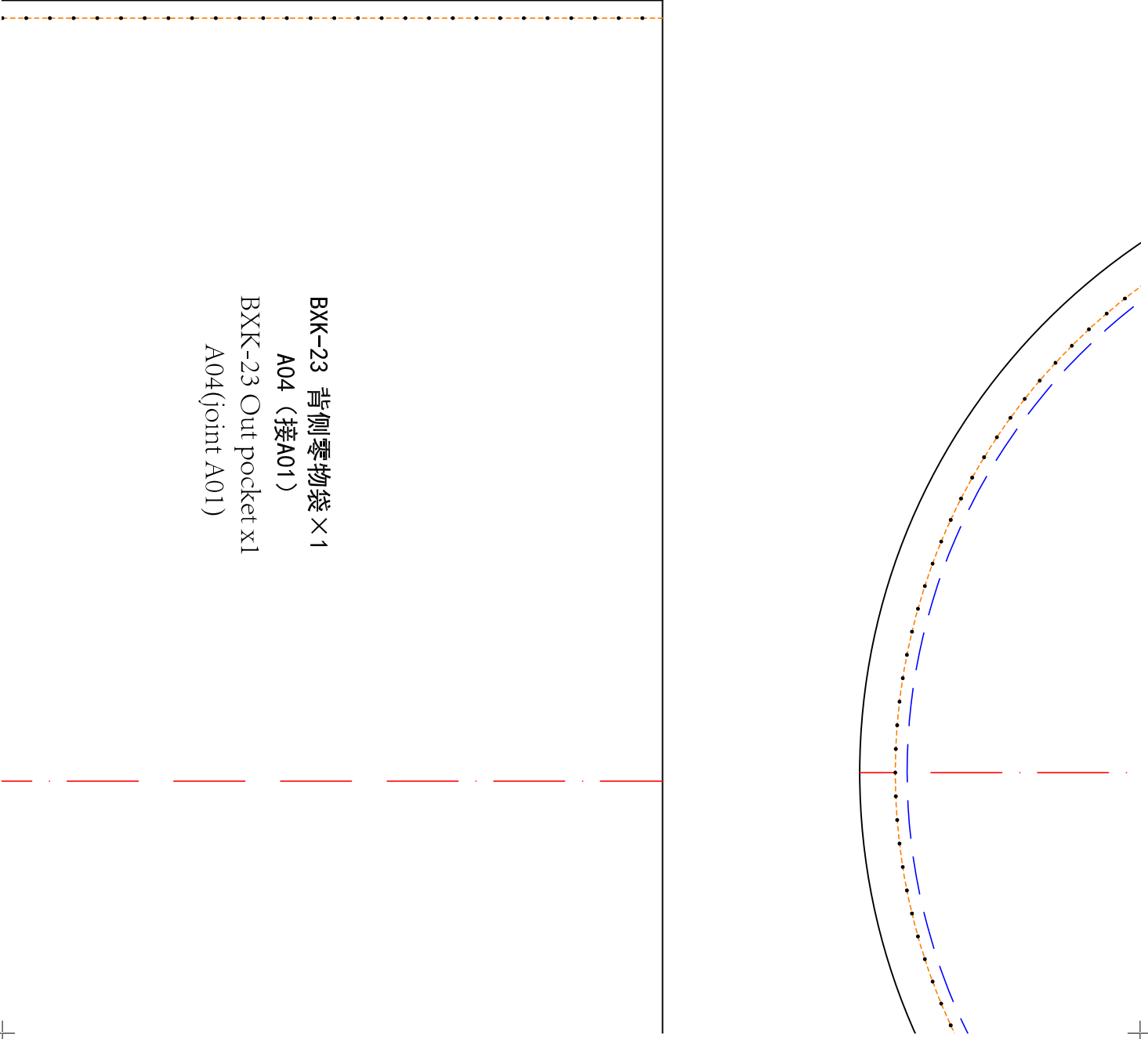
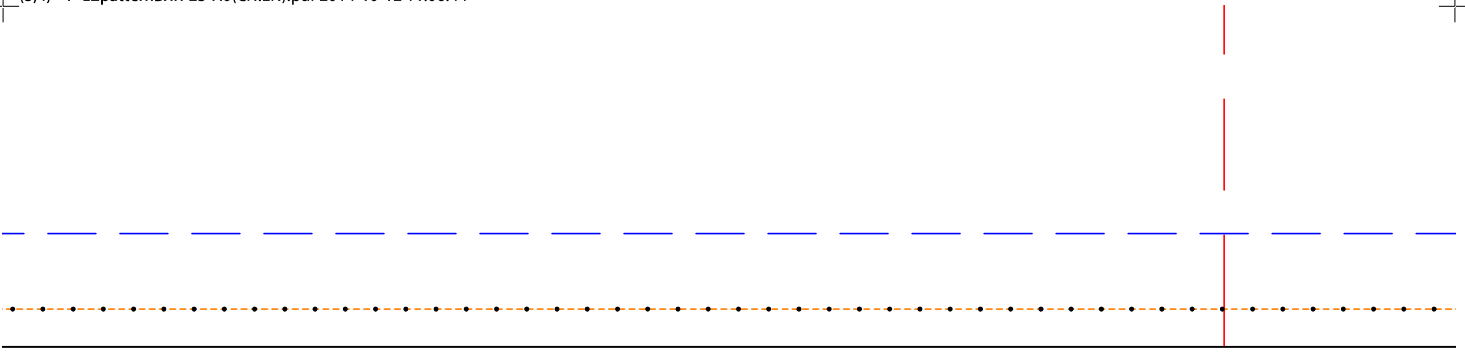
Use leather strip cutter



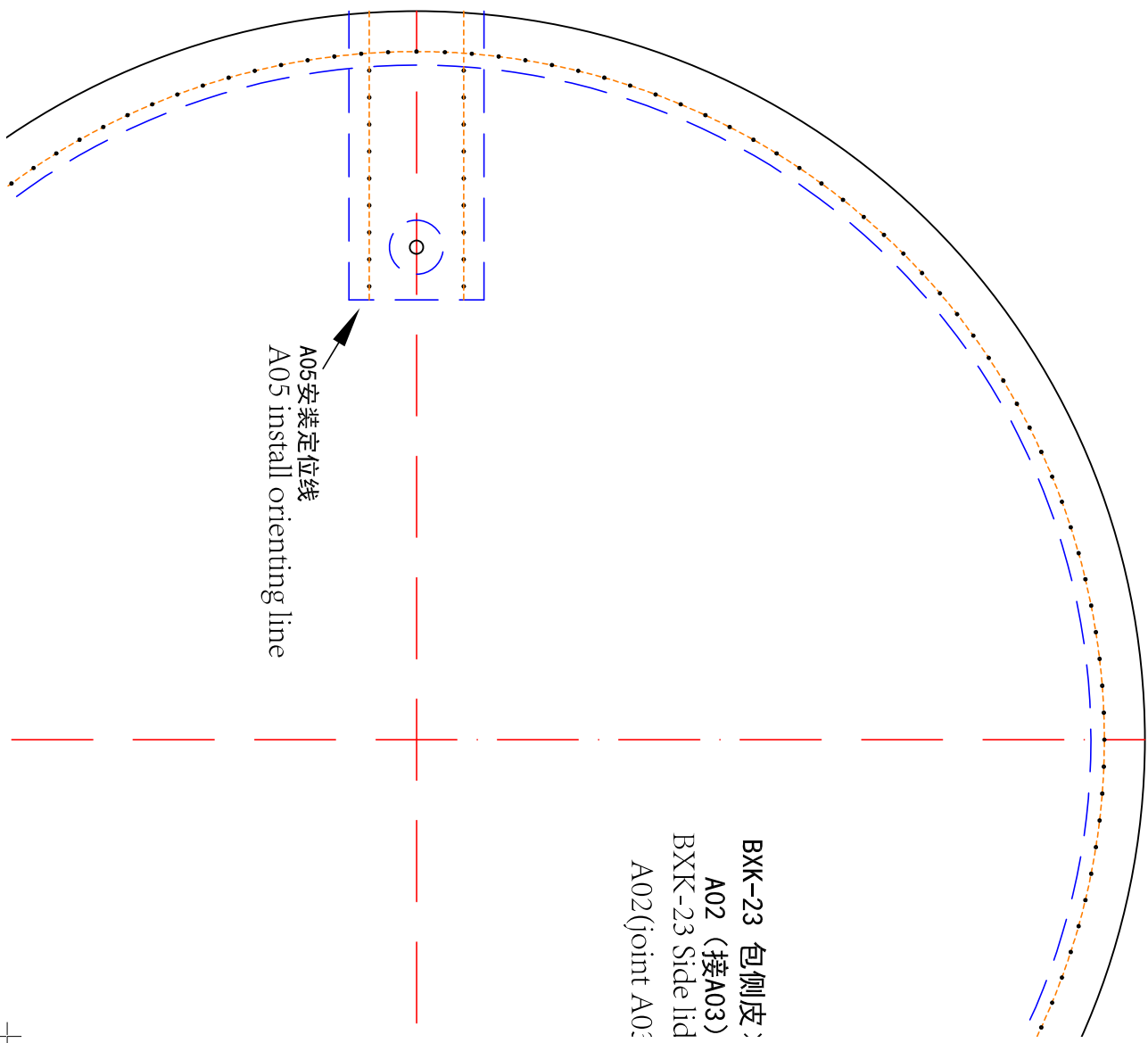
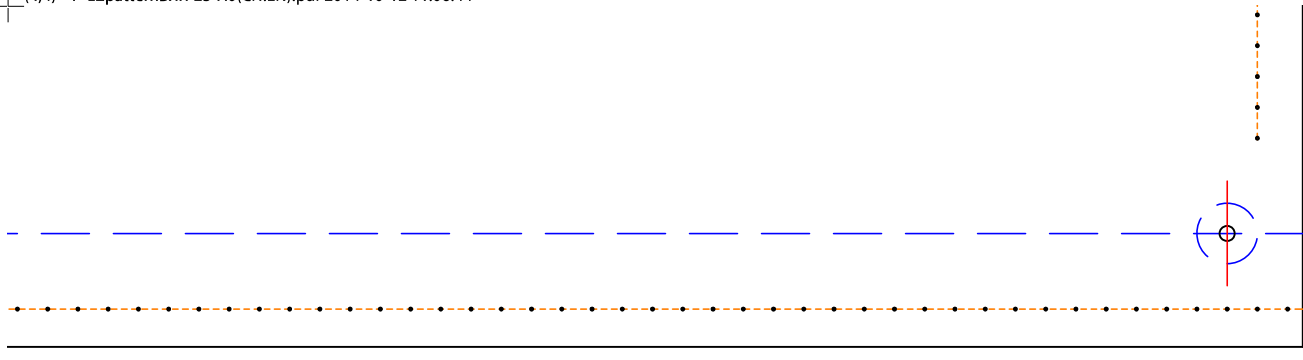
LZpattern  
BXX-23 Bucket  
A0 print 1:1





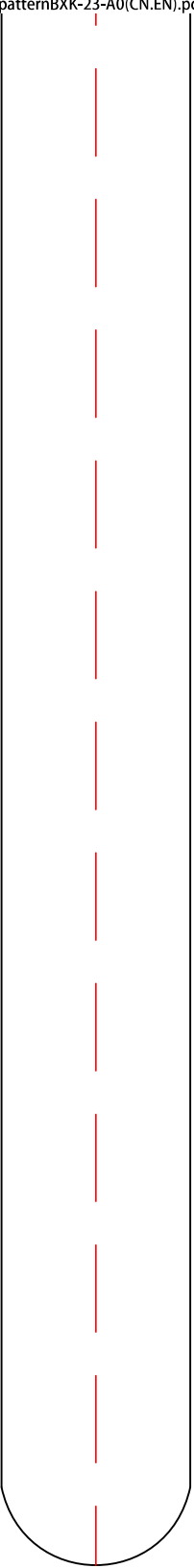


BKK-23 背侧零物袋 x1  
A04 (接A01)  
BKK-23 Out pocket x1  
A04(joint A01)



A05 安装定位线  
A05 install orienting line

BXK-23 包侧皮:  
A02 (接A03)  
BXK-23 Side lid  
A02(joint A0:

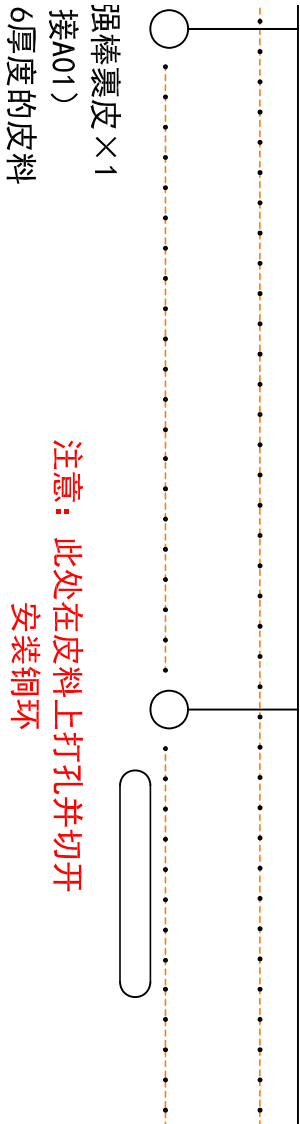


BKK-23 长背带

BKK-23 L01

ibag



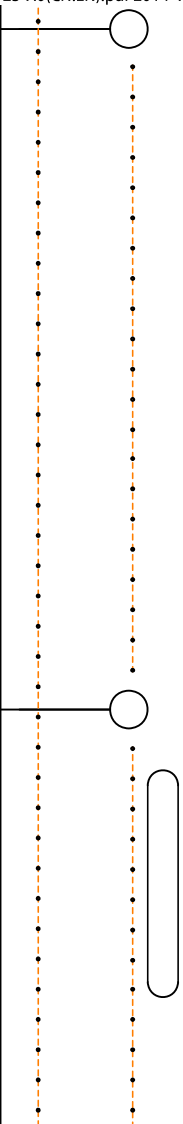


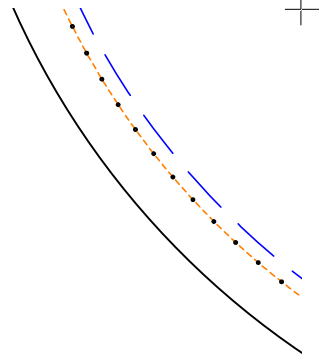
强棒裹皮 × 1  
接A01)  
6厚度的皮料

注意：此处  
在皮料上打孔并  
切开  
安装铜环

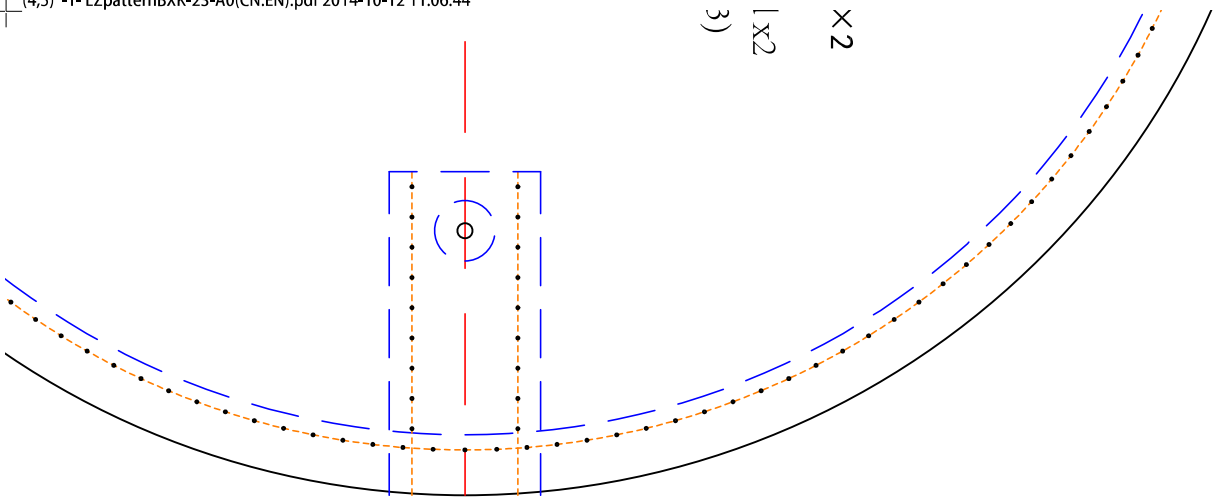
wrap leather x1  
oint A01)  
her is adviced

Note: hollow the hole and install copper ring





X2  
3)





(包身两侧扣带) 扣袷×3  
A09

ing shoulder belt ring x3  
A09