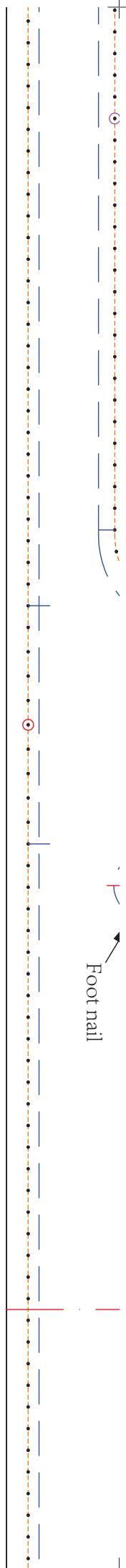
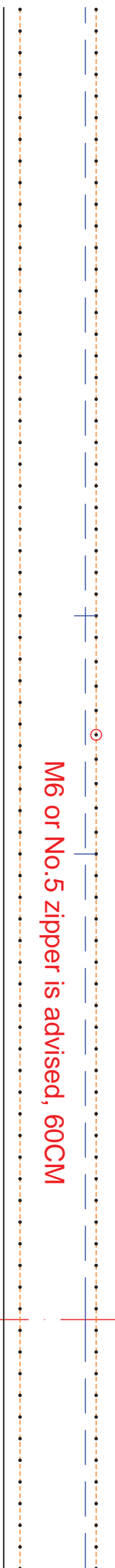


Foot nail

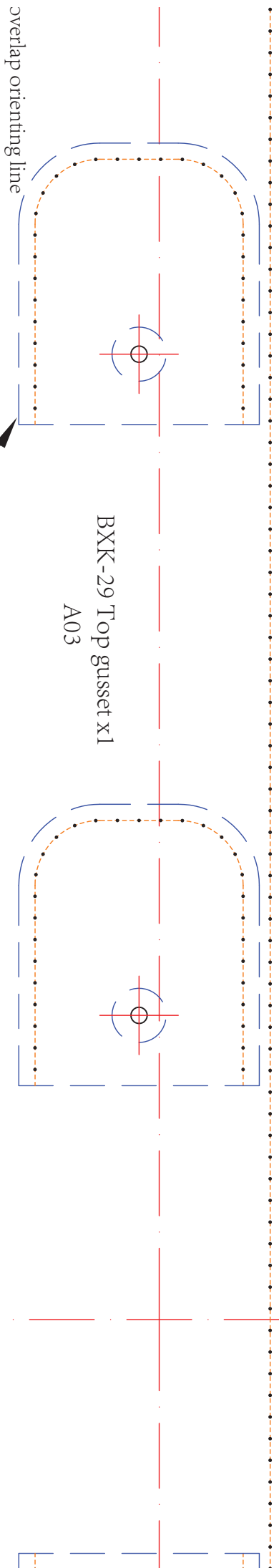


M6 or No.5 zipper is advised, 60CM

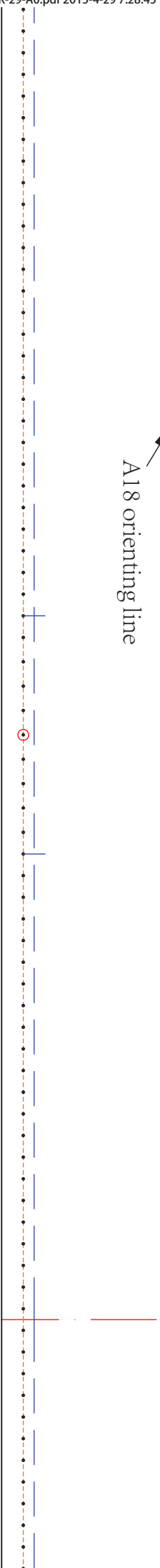


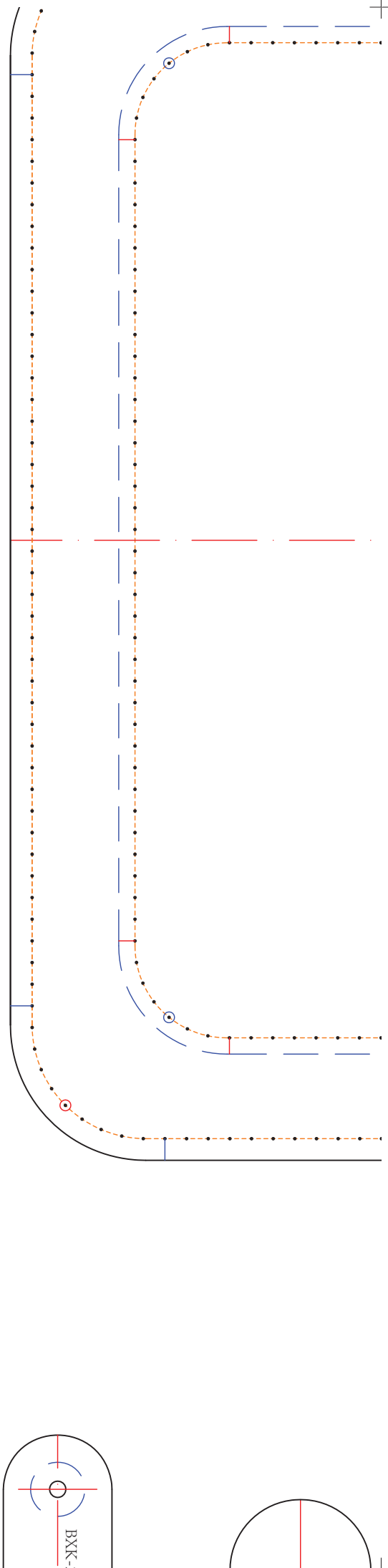
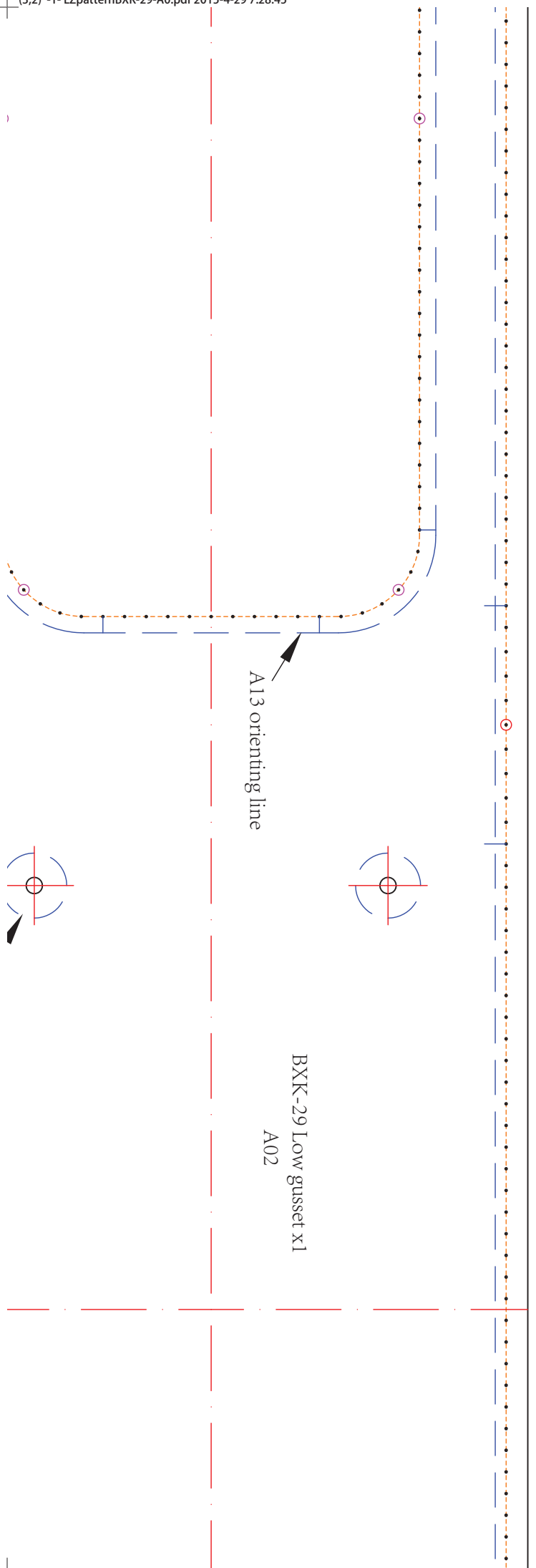
Zipper hole

BKK-29 Top gusset x1
A03



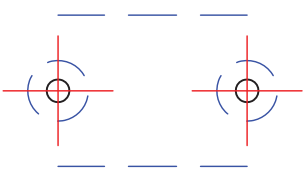
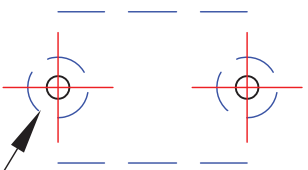
A18 orienting line





A01

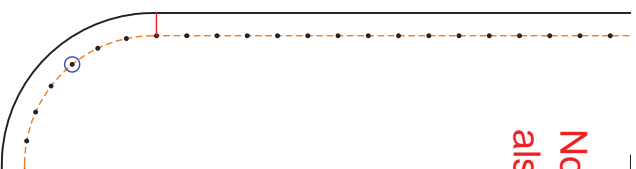
Note: Cut one piece from flesh side and the other from grain side.

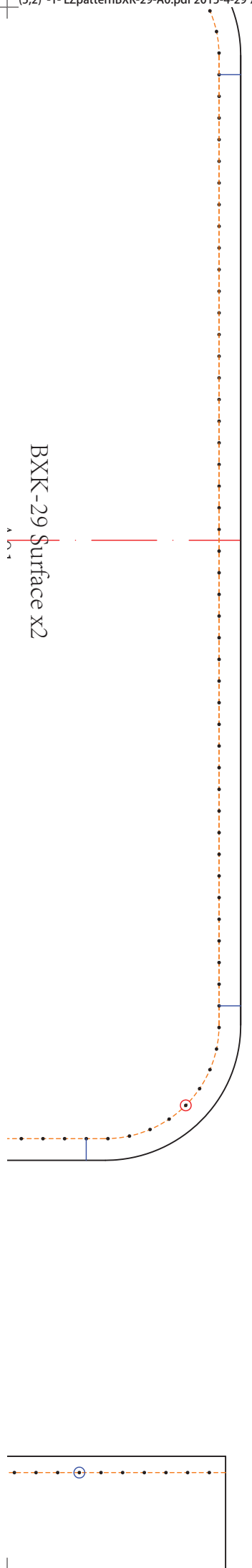


A05 orienting line

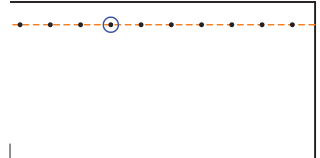
A10 orienting line

Nc als

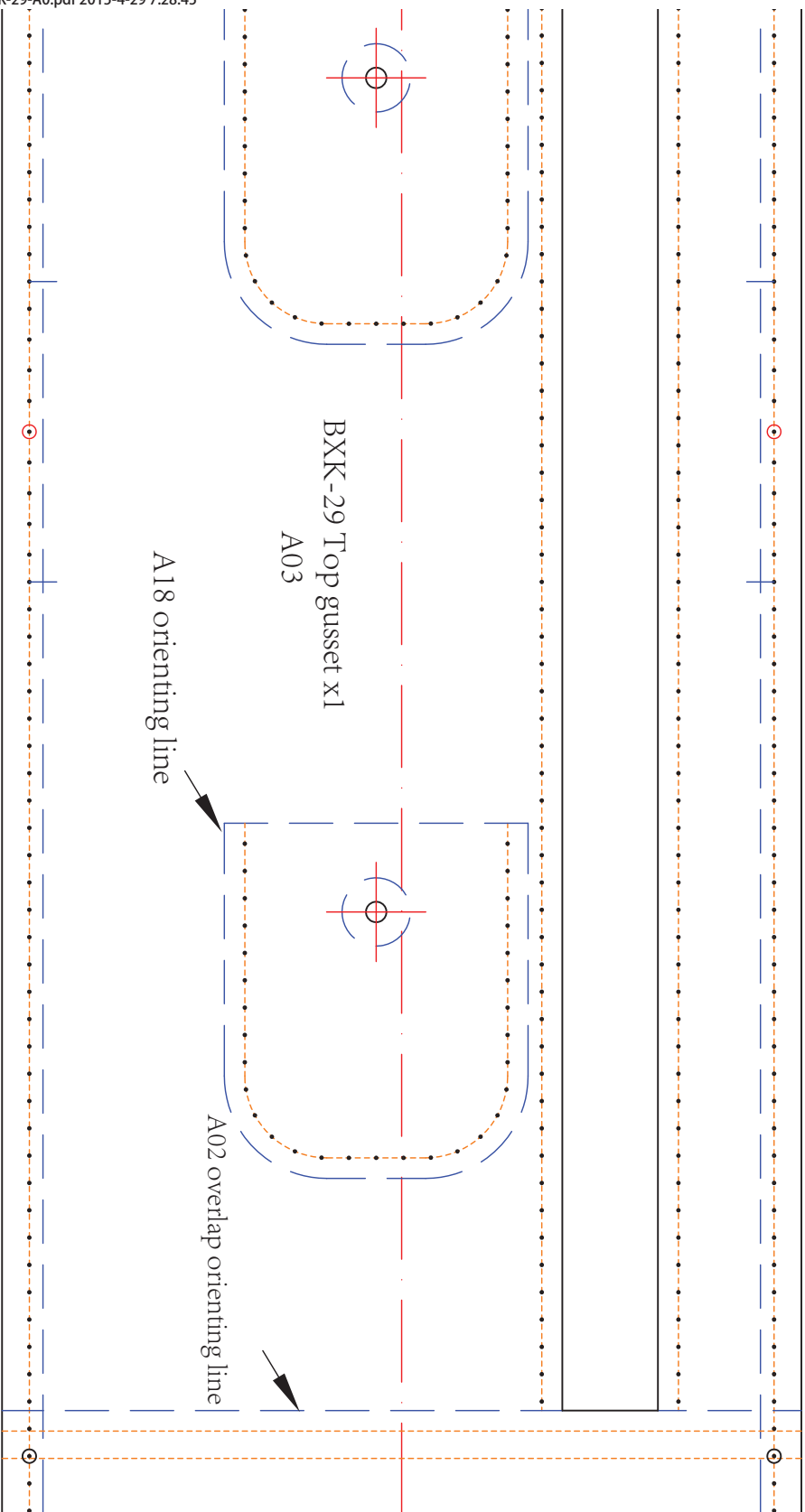
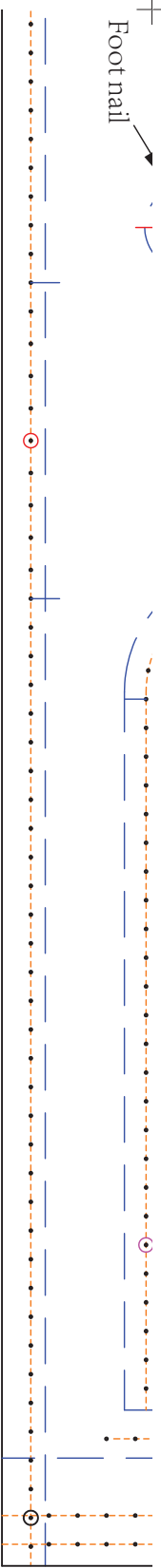




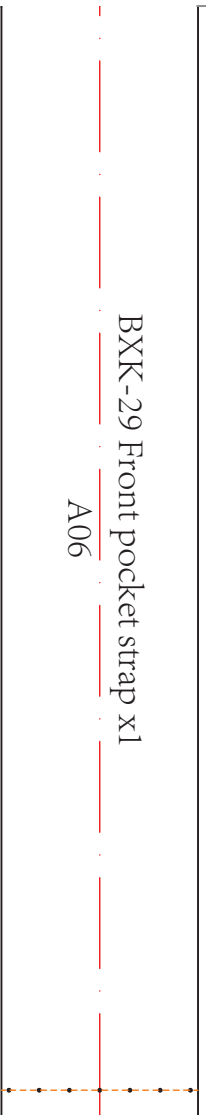
BXX-29 Surface x2



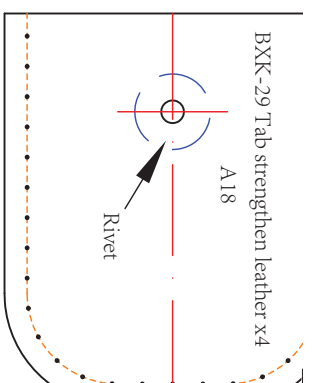
Foot nail



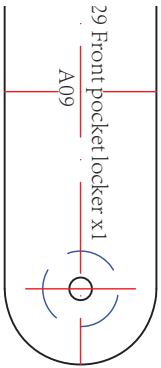
BKK-29 Front pocket strap x1
A06



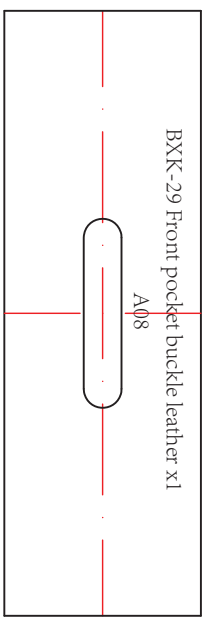
BKK-29 Tab strengthen leather x4
A18



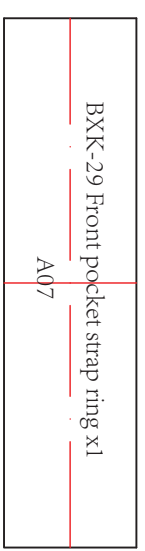
29 Front pocket locker x1
A09



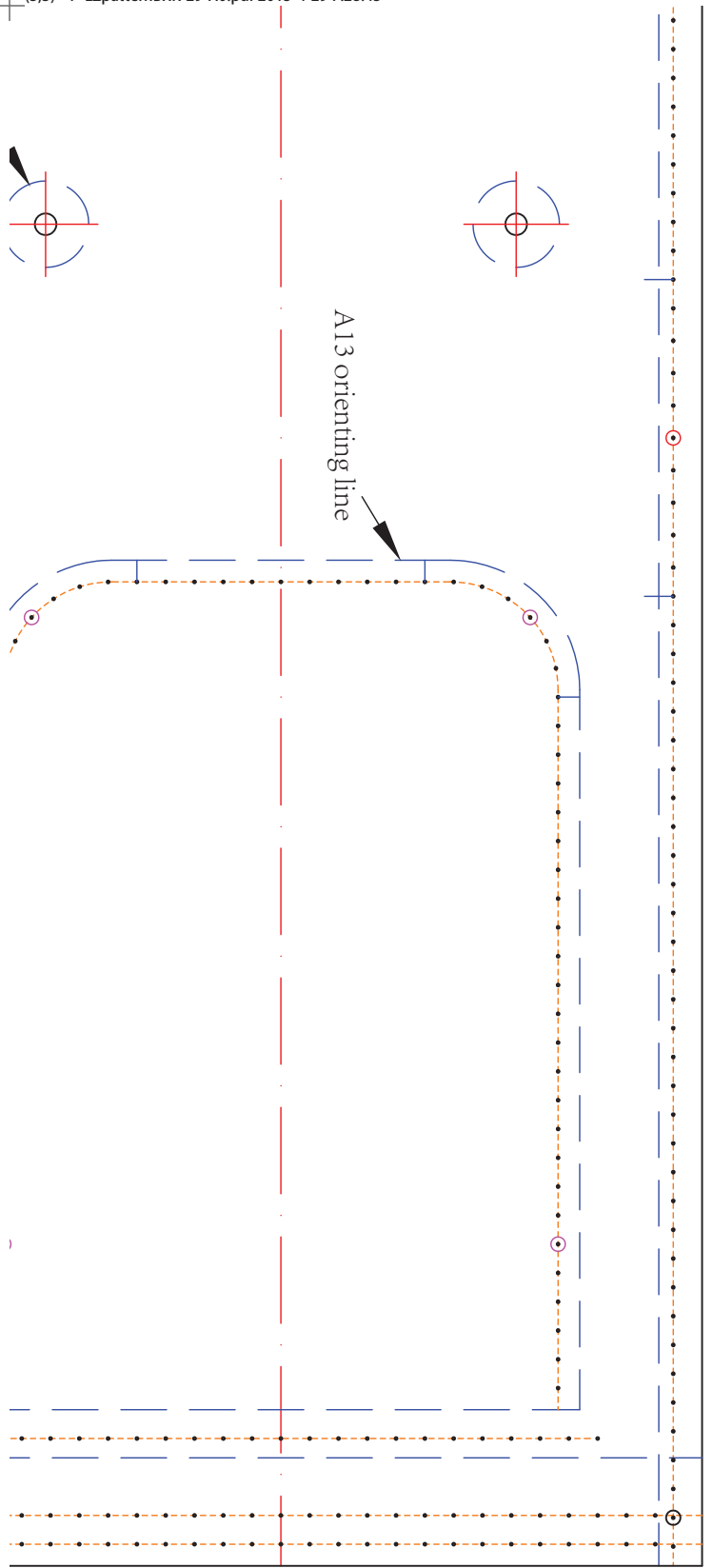
BKK-29 Front pocket buckle leather x1
A08



BKK-29 Front pocket strap ring x1
A07

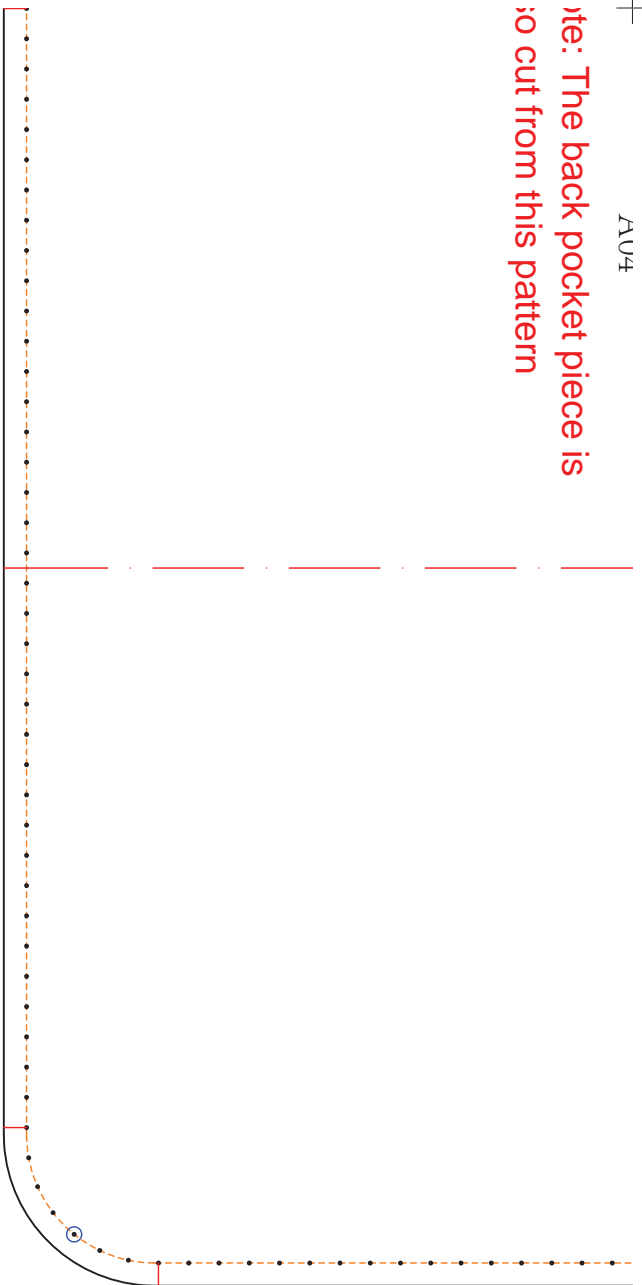


A13 orienting line

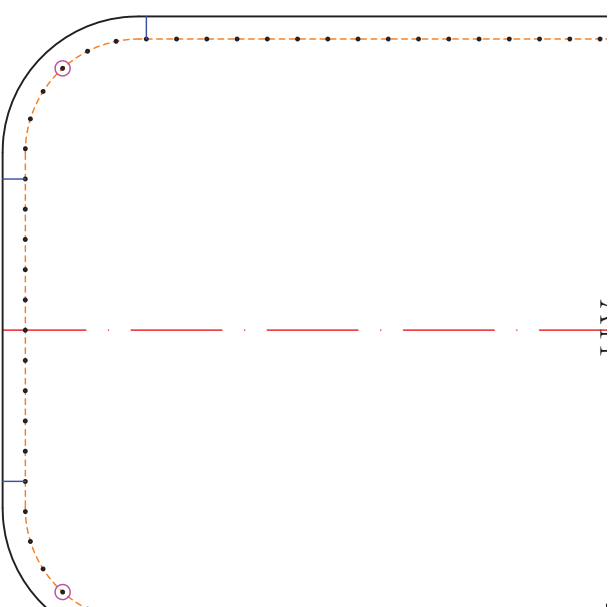


A04

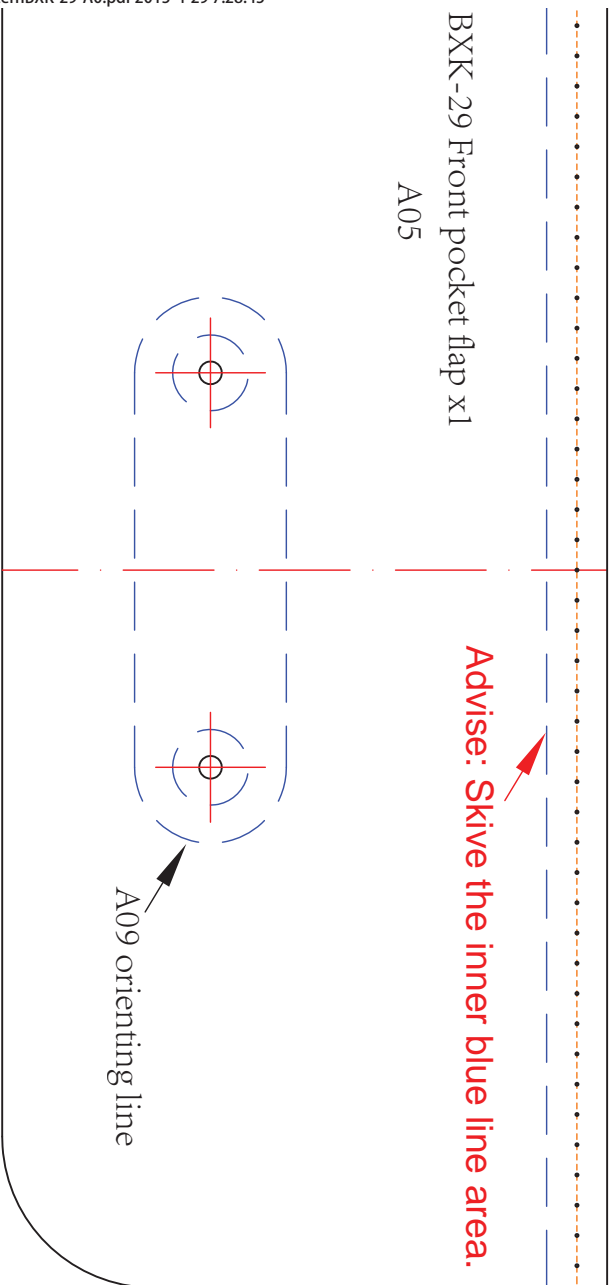
Note: The back pocket piece is to be cut from this pattern



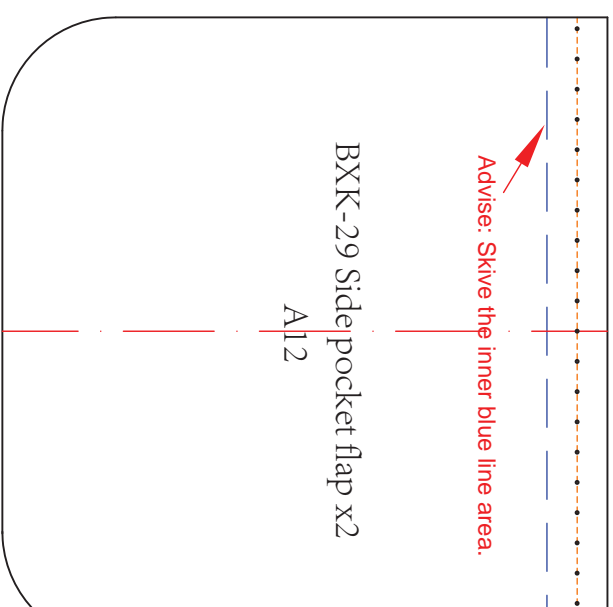
A11



BXK-29 Front pocket flap x1
A05

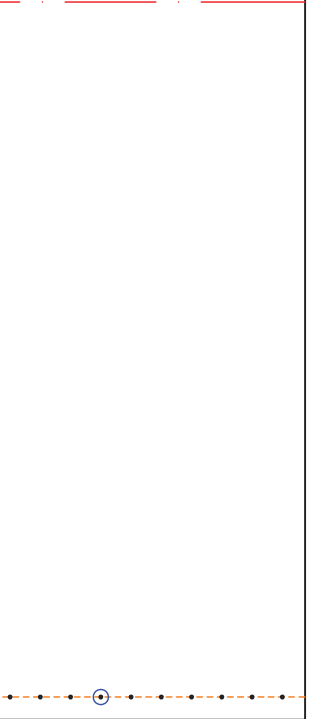


BXK-29 Sidepocket flap x2
A12



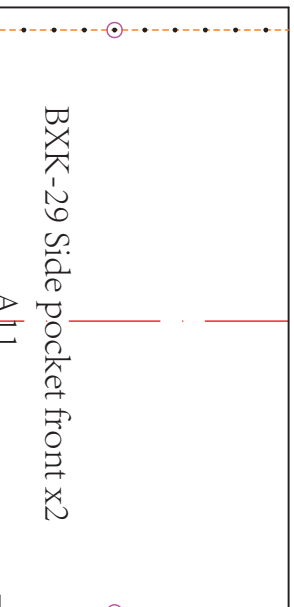
BXX-29 Front pocket front x2

A 0 4

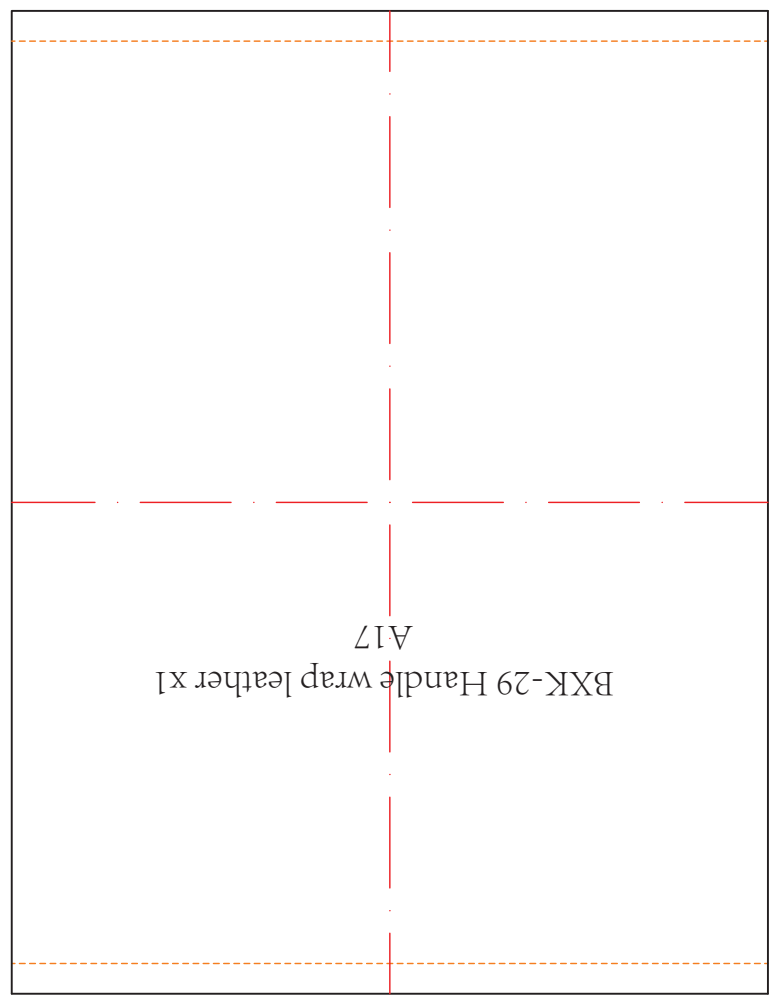
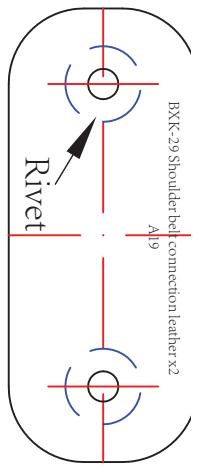
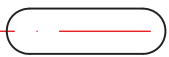


BXX-29 Side pocket front x2

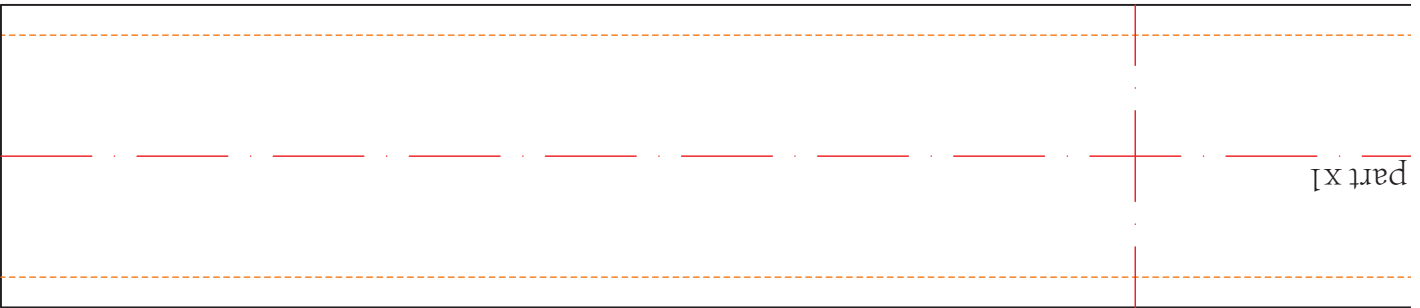
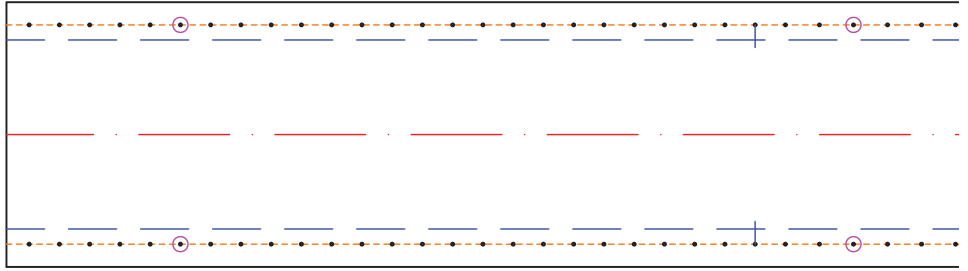
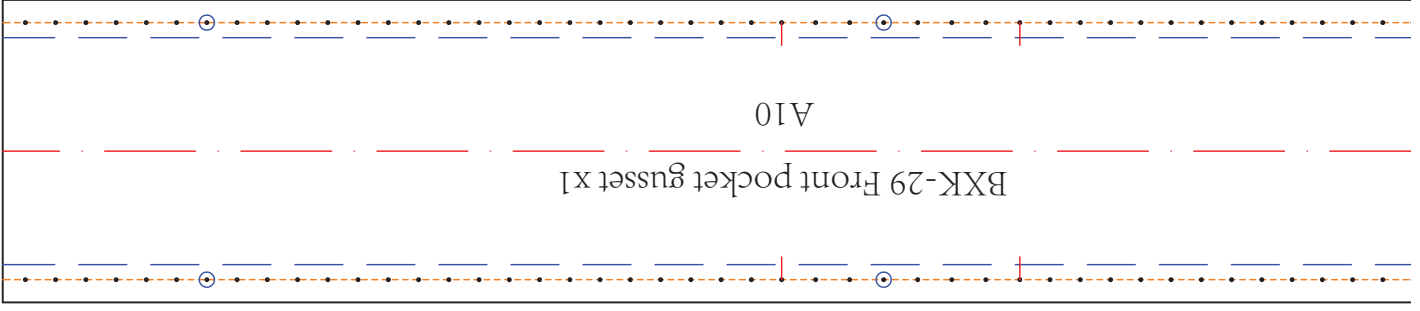
A 1 1

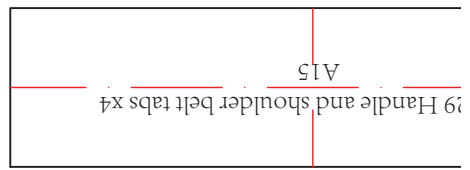
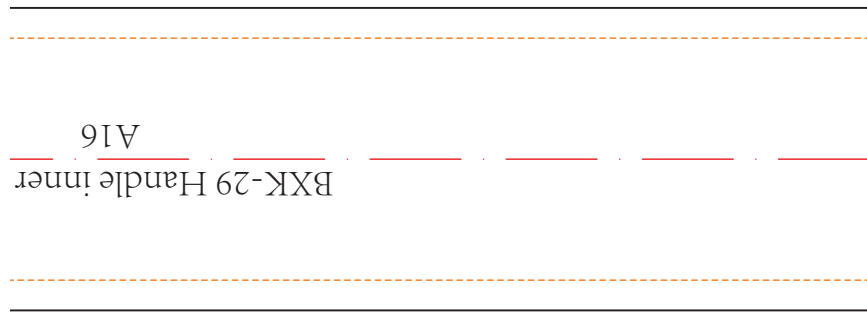
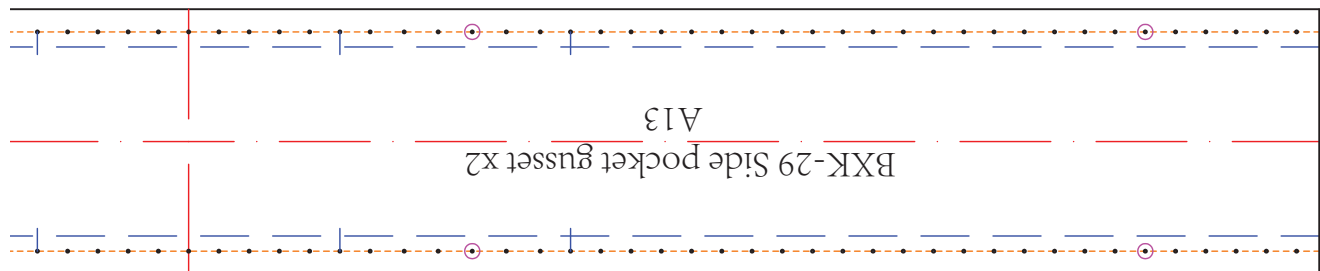
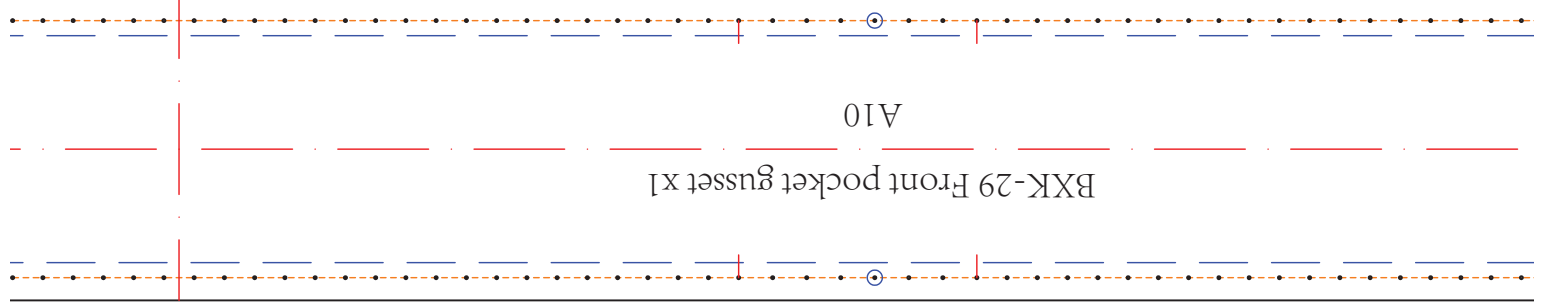


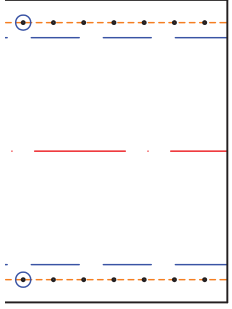
unt umbrella straps x2
A14



BXX-29 Frc





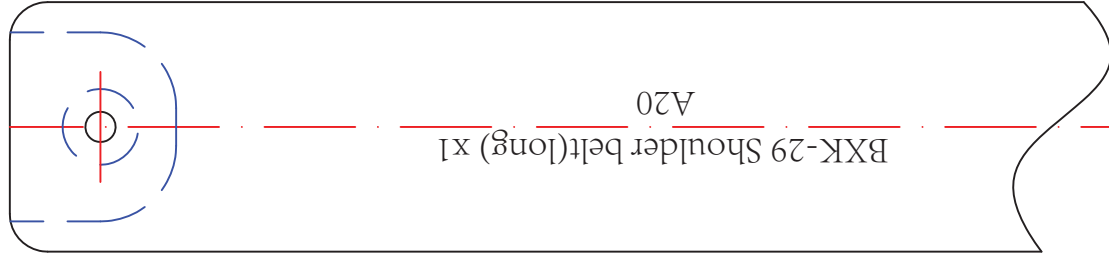


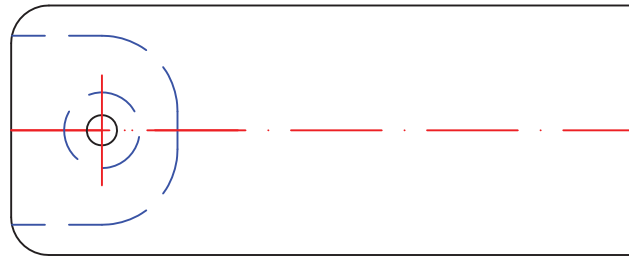
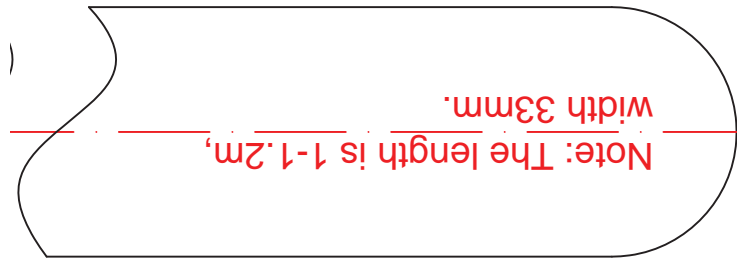
BXX-2

LZpattern

BKK-29

A0 print 1:1





BKK-29 Shoulder belt(short) x1
A20

