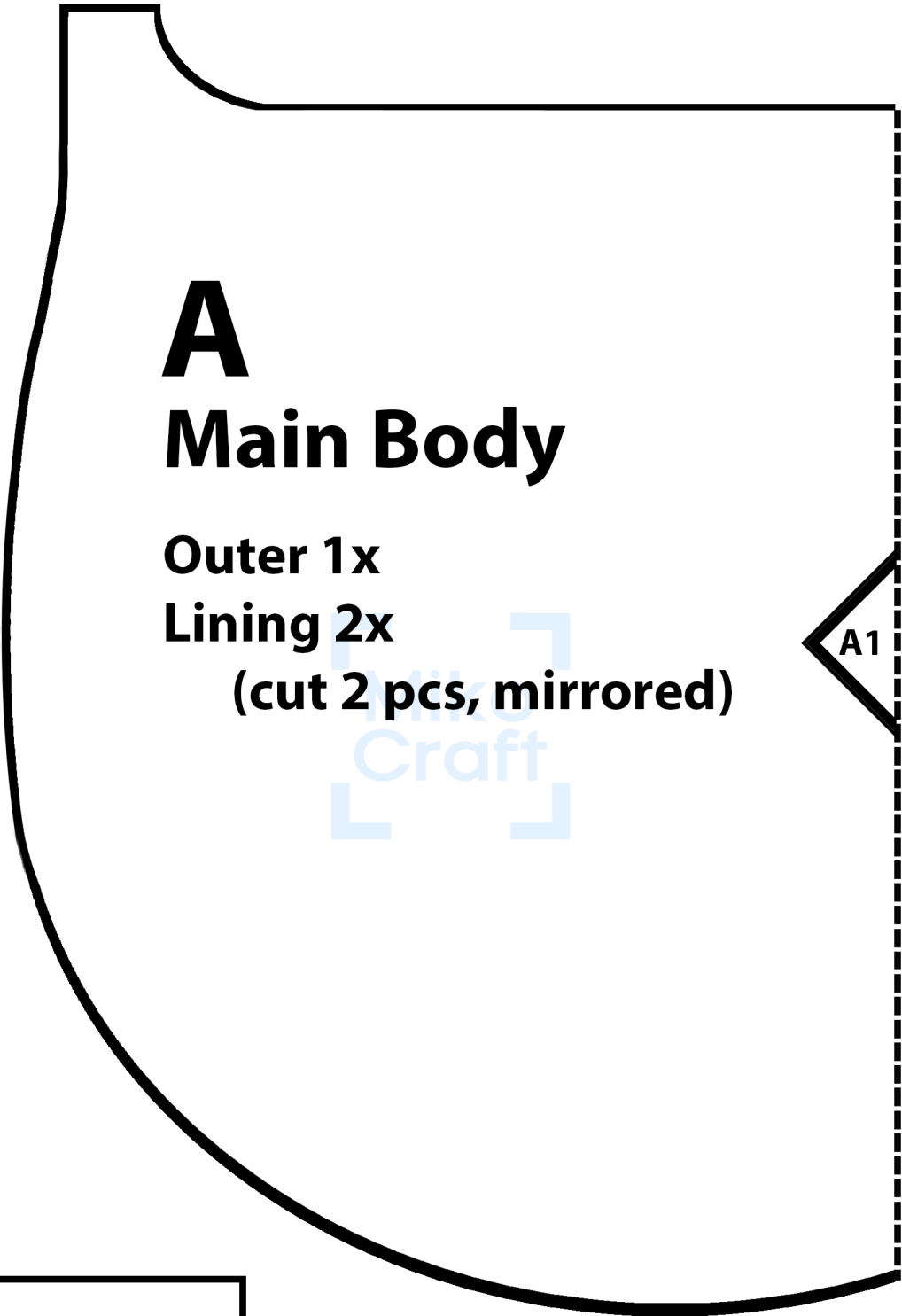


SADDLE BAG PATTERN

By MikoCraft

Video Tutorial: <https://youtube.com/mikocraft>



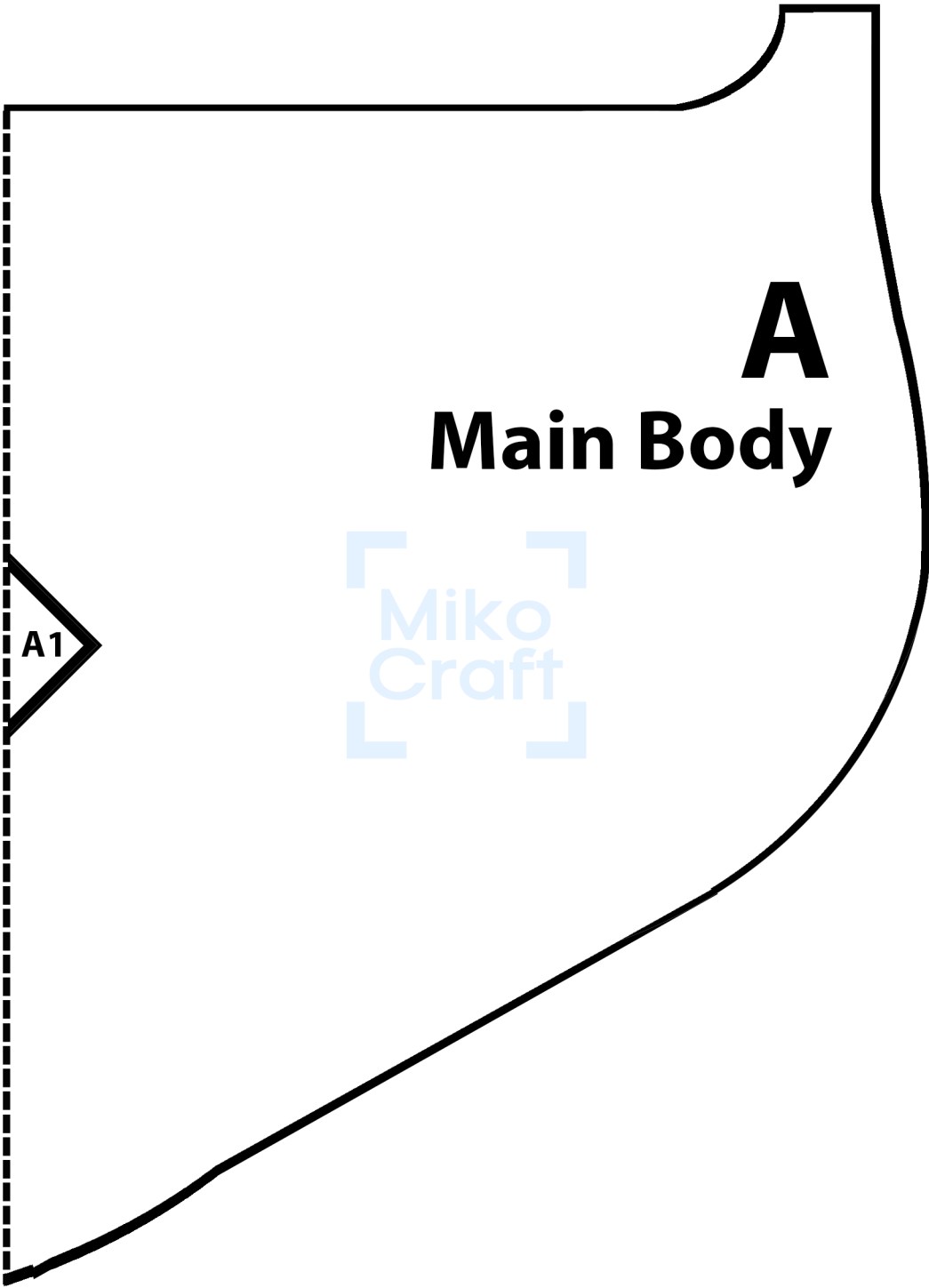


A
Main Body

Outer 1x
Lining 2x
(cut 2 pcs, mirrored)

A1

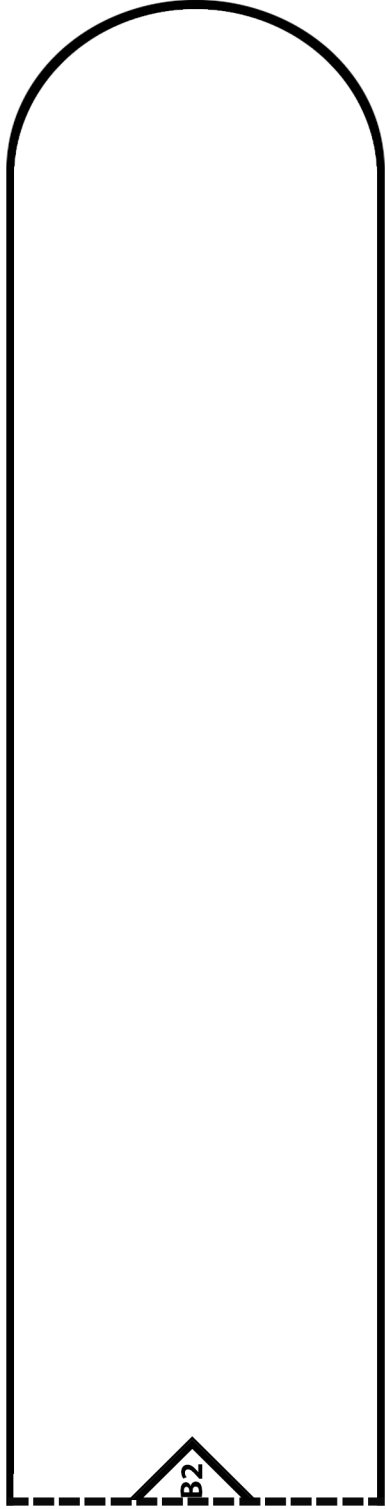
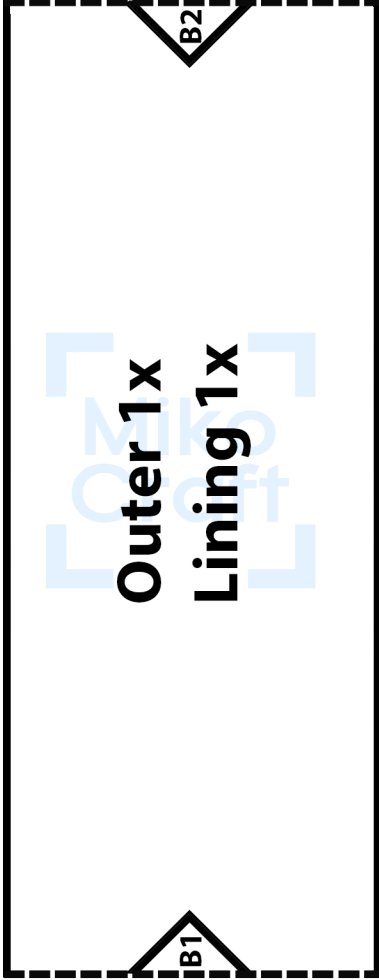
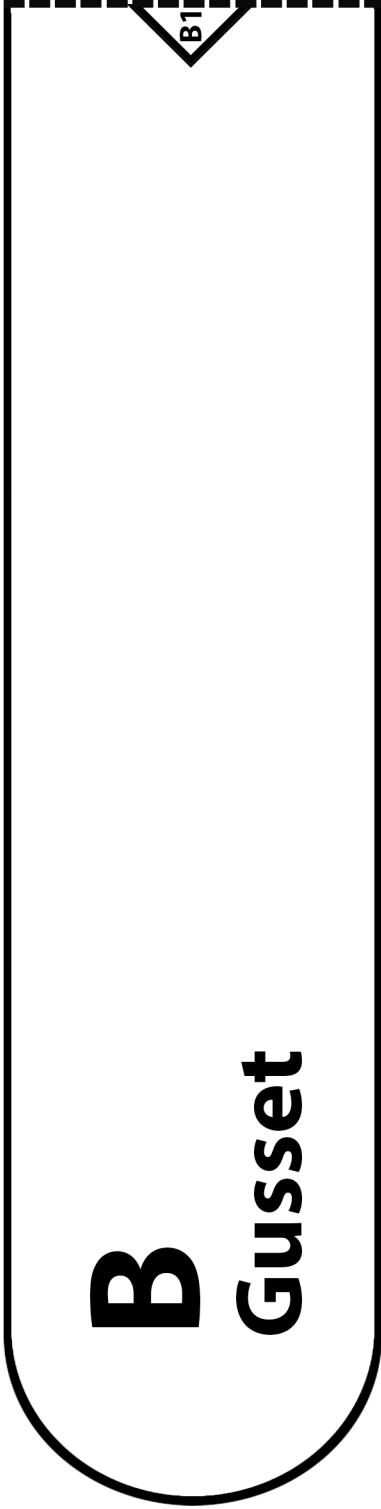
Checker
4 x 4 cm

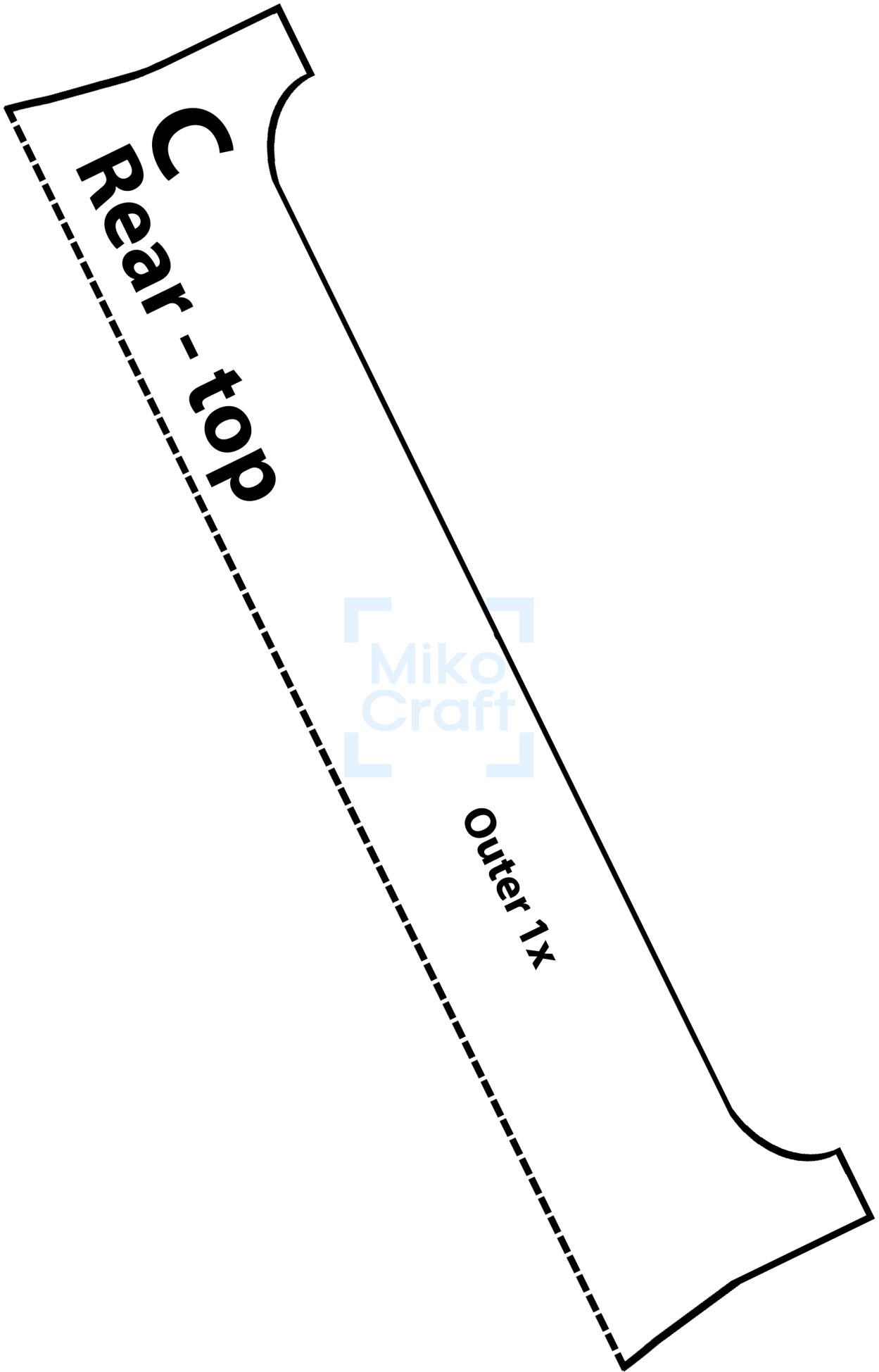


A
Main Body

A1

Miko
Craft





Rear - top

Miko
Craft

Outer 1x

D

Rear - bottom

Outer 1x



E Flap

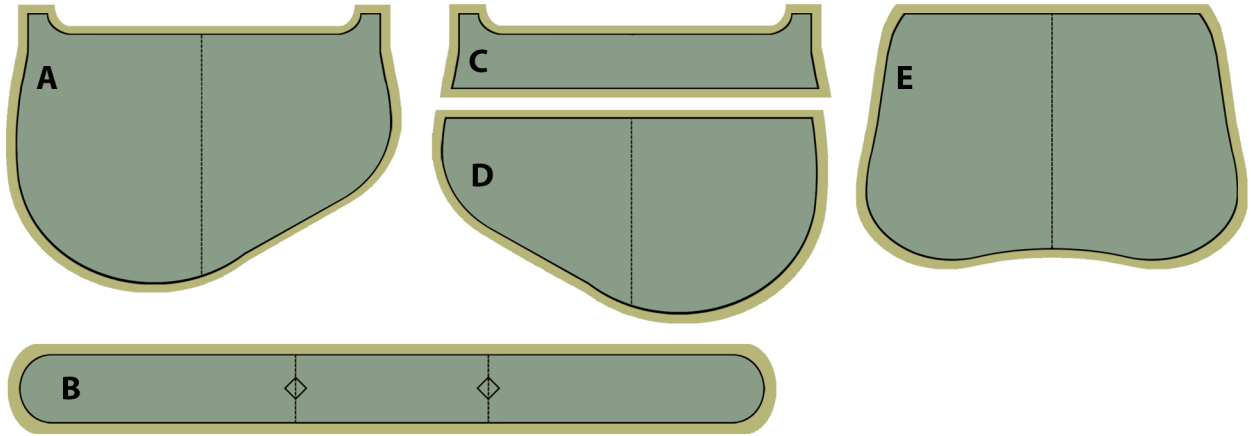
**Outer 1x
Lining 1x**



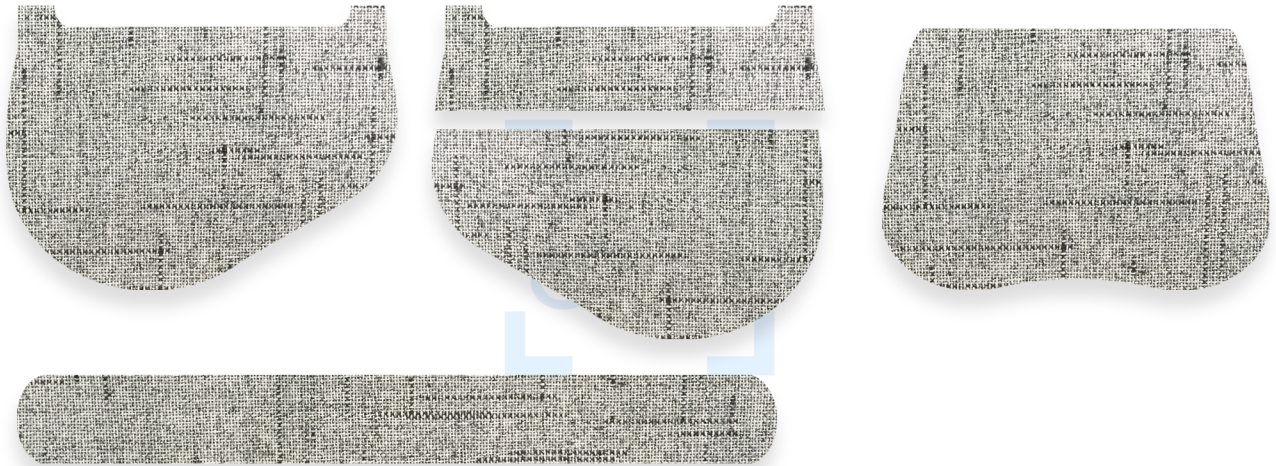
Cut on fold ----->

Pattern and fabrics preview

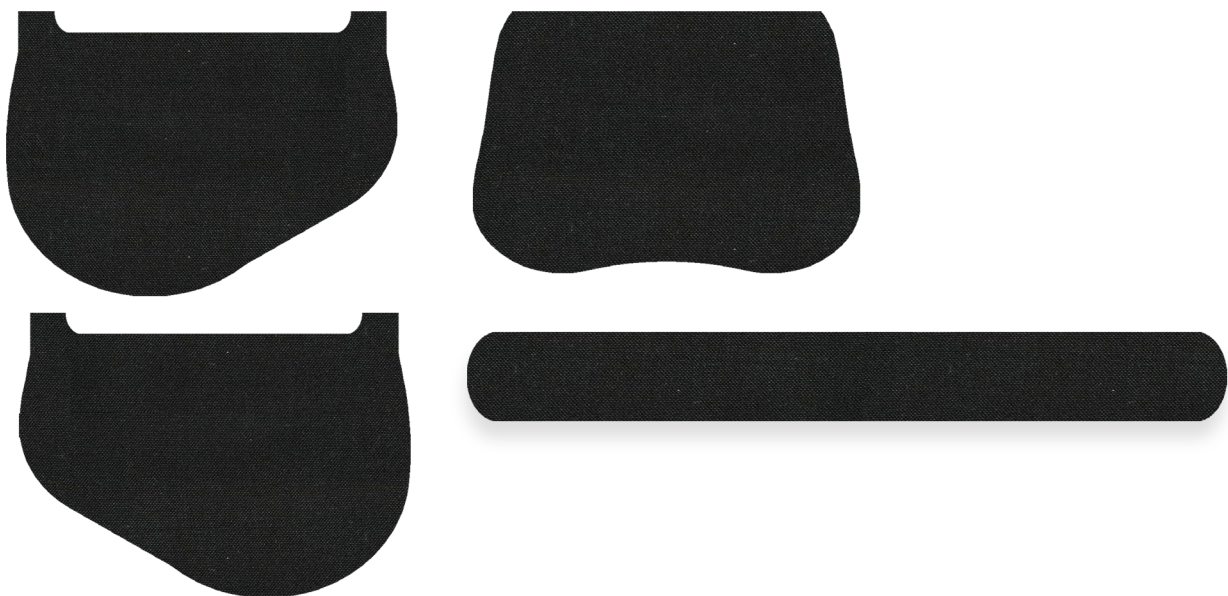
Pattern with seam allowance



Outer Fabric



Lining fabric



Other Materials



Bias tape
2 x 120 cm



D Ring's holder
2x12 cm



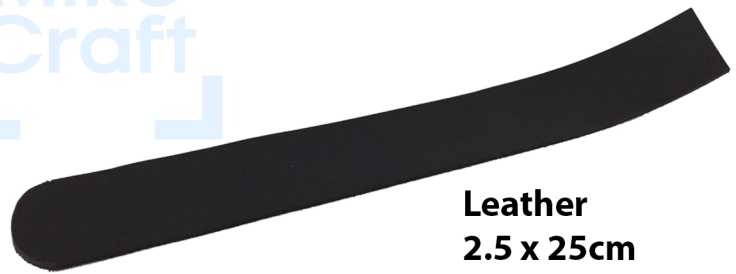
D ring 2cm



Velcro
2.5x8cm



Piping 120cm



Leather
2.5 x 25cm

Fabric strip for piping 3 x 120cm



Examples of Final result

