



Catherine Bag

Size: 110mm (h) x 240mm (w)



Video Tutorial: <https://youtu.be/6DQt5NANdKg>

COPYRIGHT NOTICE

By using this pattern you agree to the following Copyright notice.

© Copyrights **MPR Leatherworks** agreement.

Please take note that this pattern (design) is strictly owned by **MPR Leatherworks**.

YOU MAY - When you purchase this design, make and sell the physical product for personal use and commercial gain.

YOU MAY NOT - In any way or form, in part or in full, sell, donate or gift the pattern (designs).

This pattern is, and remains the property of **MPR Leatherworks**

By clicking "Buy" or "Purchase" on any of the sites that MPR Leatherworks makes its patterns (designs) available, you agree to this copyright agreement and are held liable for © Copyright breach.

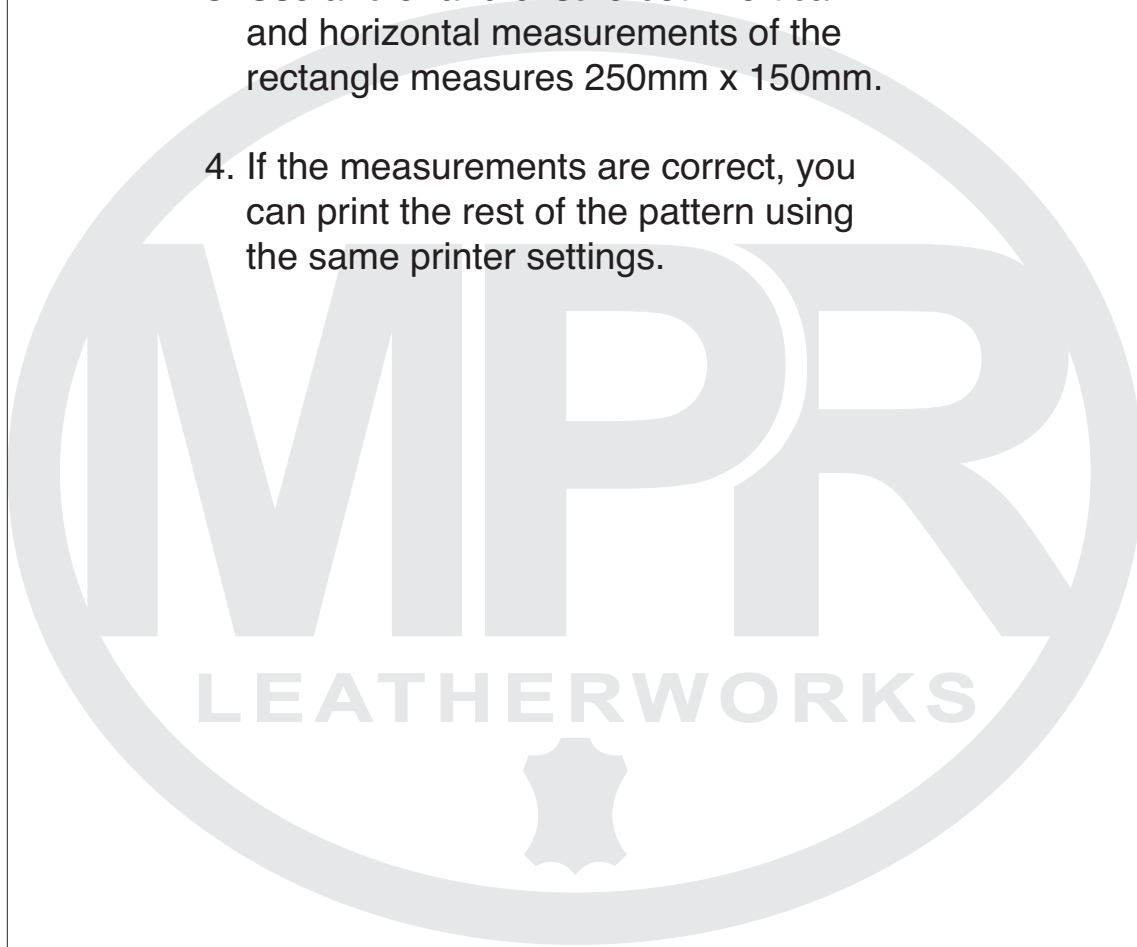
Signed: MPR Leatherworks (www.mprleatherworks.co.za)



150mm

TEST PAGE

1. Please ensure that you have selected A4 paper size on your printer.
2. Print this test page BEFORE you print the rest of the project.
3. Use a ruler and ensure both vertical and horizontal measurements of the rectangle measures 250mm x 150mm.
4. If the measurements are correct, you can print the rest of the pattern using the same printer settings.



250mm

© COPYRIGHTS

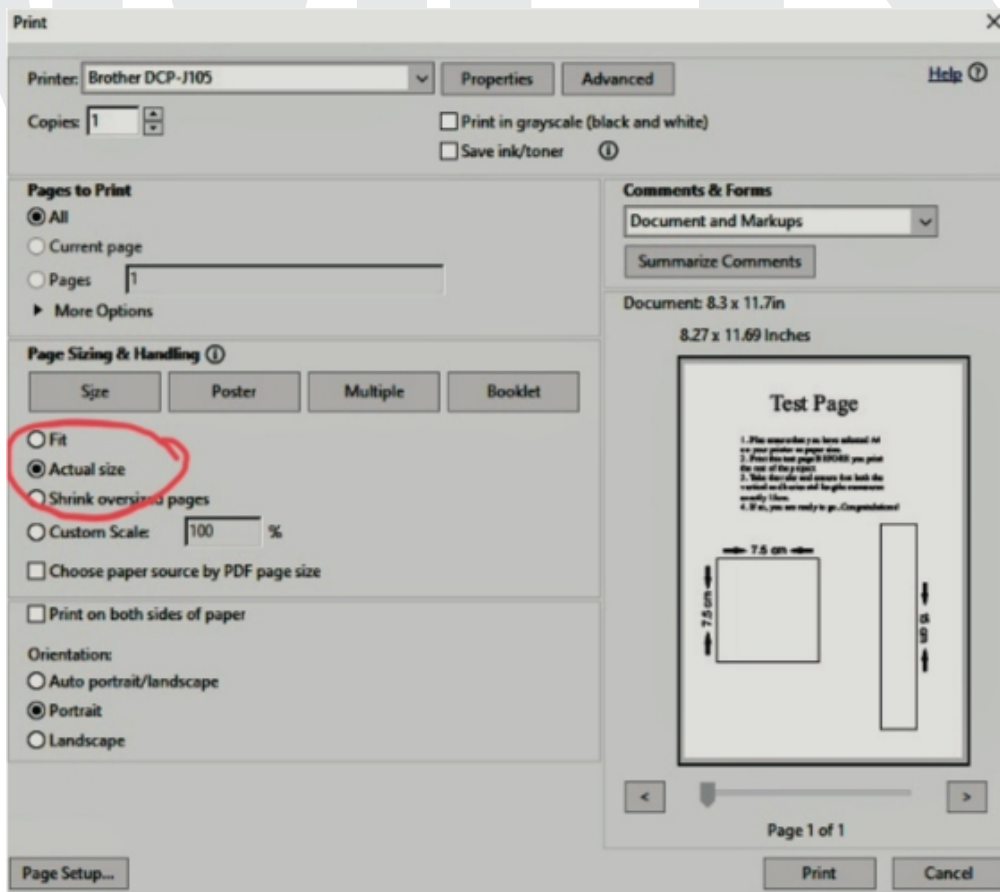
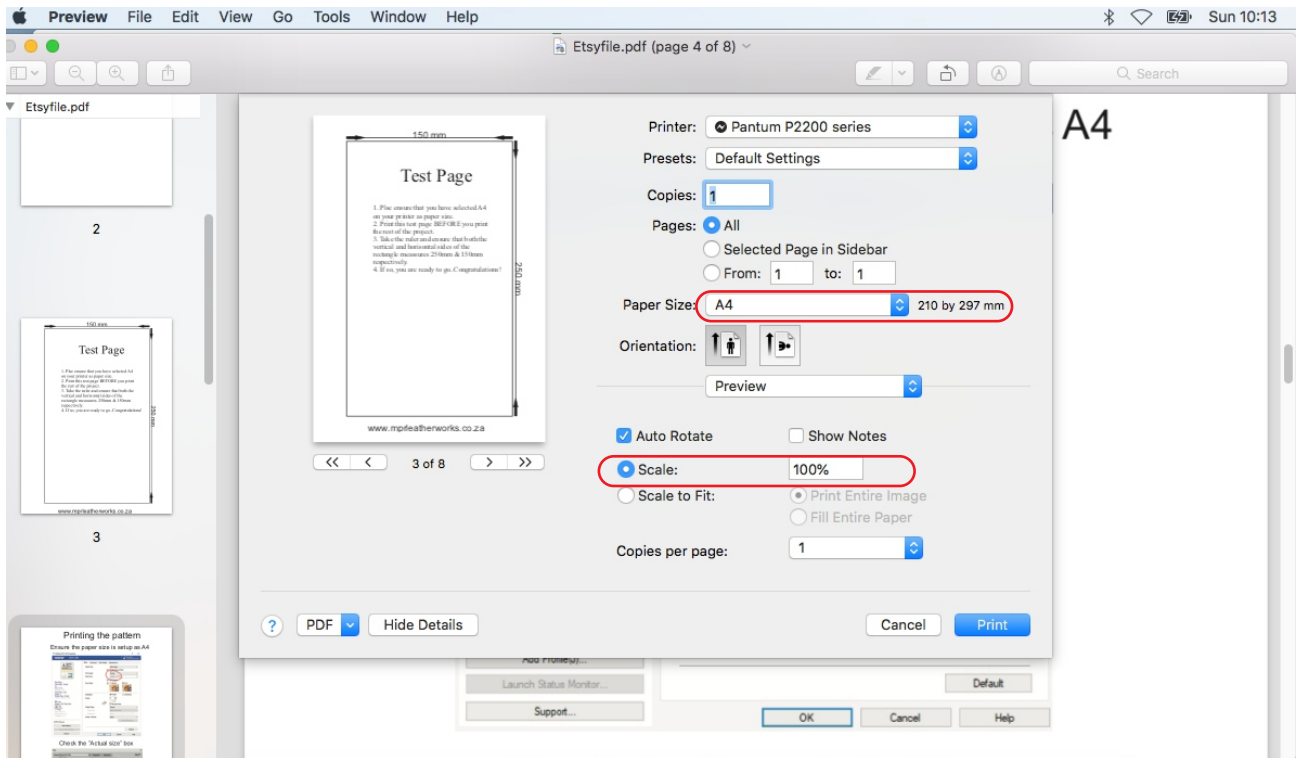
www.mprleatherworks.co.za

Printer Settings:

Please ensure to select A4 paper size.

Please ensure the scaling is set to 100% or "Actual Size"

Mac and Windows print settings can vary.



Basic Project Requirements:

Leather requirements:

~5-6oz Veg Tan Leather = ~3,05ft²

Other requirements:

PDF Viewer

Black & White A4 Printer

Sharp Knife

Masking Tape

1mm & 3mm hole punch and mallet

Oval Punch 19mm x 4mm

Half-round punches

D-rings x2

Swivel Clips x2

Tubular Rivets x4

Waxed stitching thread and 2x needles (don't have to be sharp)

Basic starting procedure:

1. Print the PDF pattern on A4 paper.
2. Start by printing the test page first and check that the sizing is correct.
3. Once the pattern is printed, cut out the pattern by cutting about 2-3mm from the cut lines.
4. Sometimes the pattern needs joining as it does not fit on an A4 paper. In this case, cut the pattern on the cut line exactly. Then join the paper pattern using masking tape.
5. Once all the paper pattern pieces are cut out, tape them to the top side of the leather. (Space them on your leather to minimize wastage).
6. Roughly cut the leather to smaller pieces around the pattern pieces.
7. Punch all the punching holes as shown on the pattern.
8. Punch/Cut all the decorative parts in the pattern.
9. Cut the leather exactly to the cut line on the pattern.

Your leather parts are now ready to assemble.

Some parts will need skiving, burnishing, tooling or other work before the assembling process.

Enjoy the project!

Visit our website for more leather patterns.
www.mprleatherworks.co.za

Hardware & Tools Required

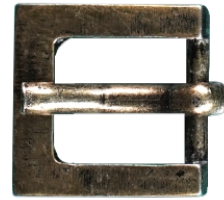
Tools Required



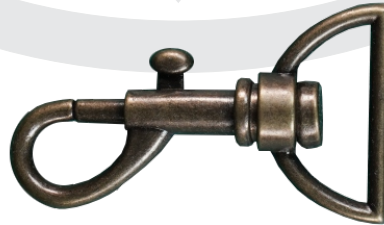
Tubular Rivets x4
~6-8mm



D-Rings x2
15mm



Buckle x1
20mm
(inside)



Swivel Hook x2
26mm
(inside)



Mallet



Knife



Half Round Punch
15 & 20mm



Oval punch
19x4mm

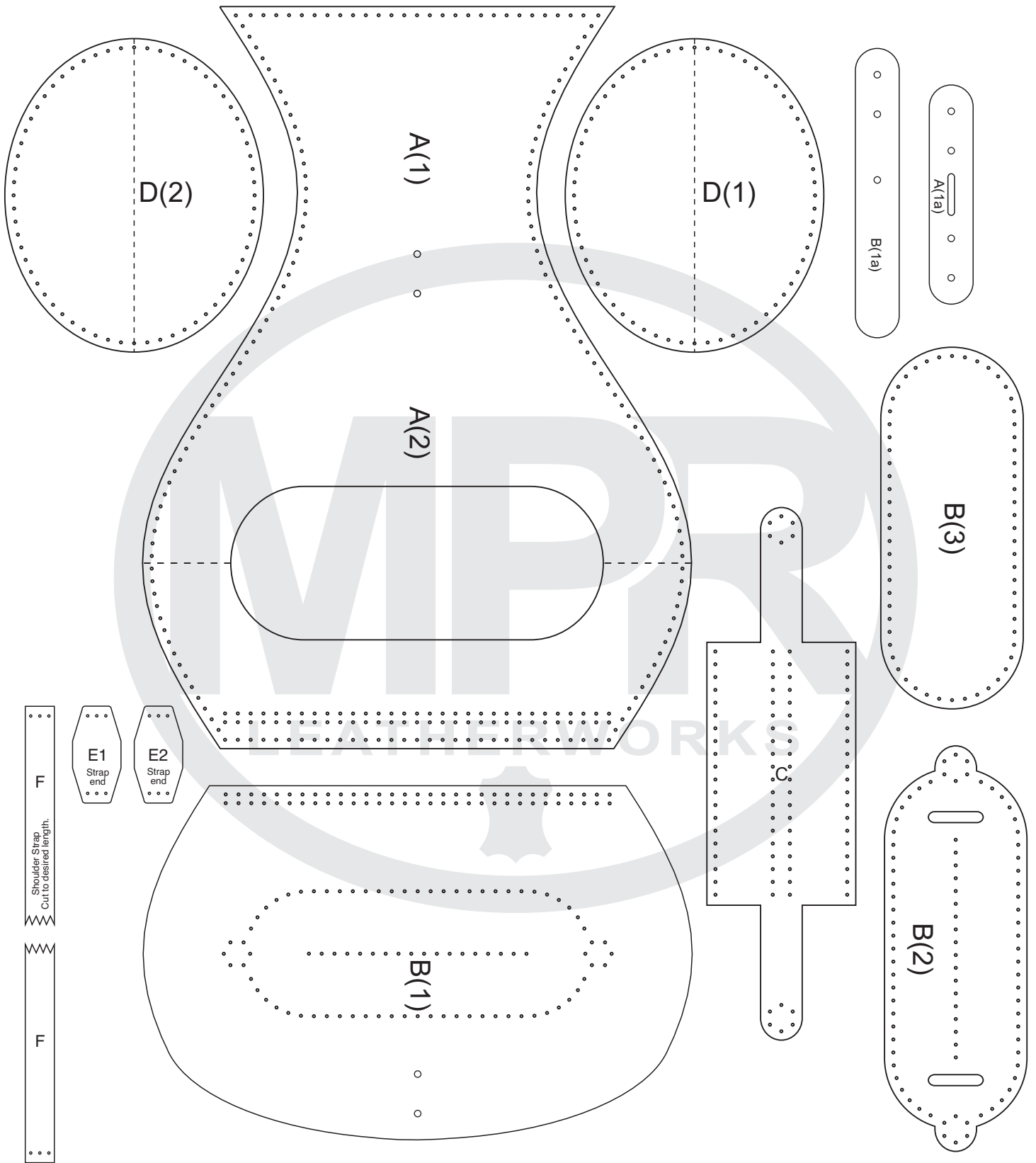


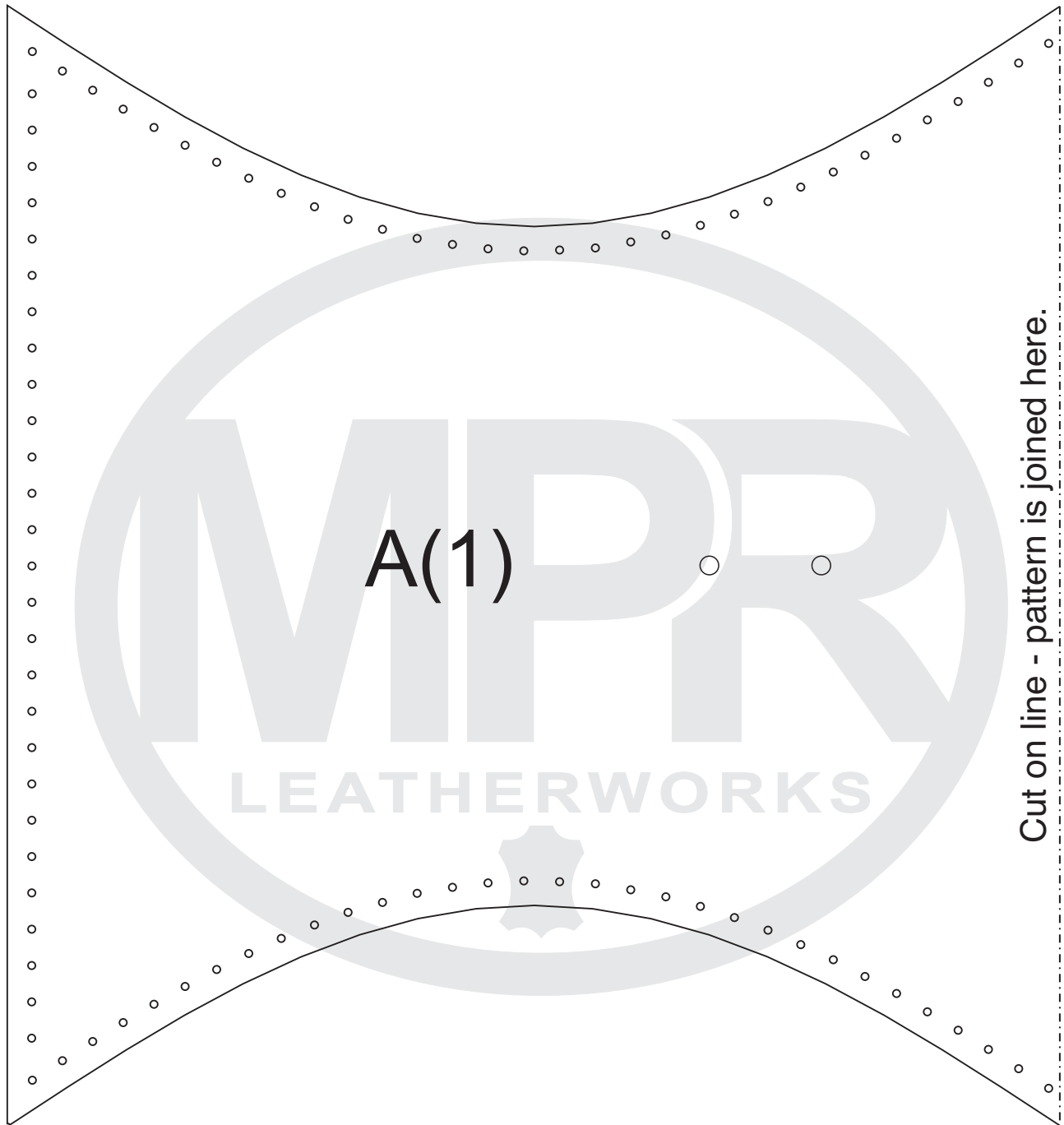
Hole Punch



1 & 3mm

Summary of Parts





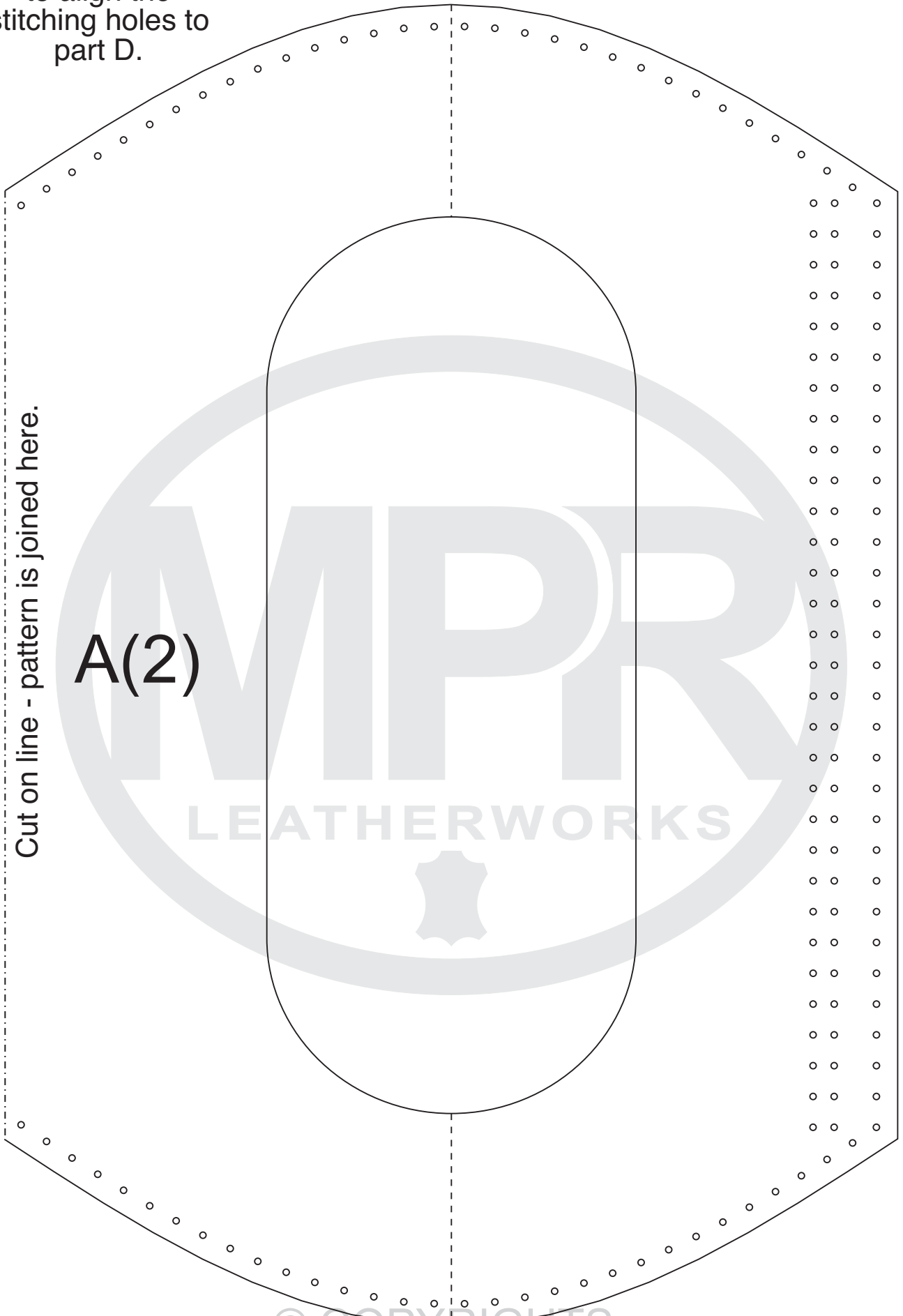
A(1)

Cut on line - pattern is joined here.

© COPYRIGHTS

www.mprleatherworks.co.za

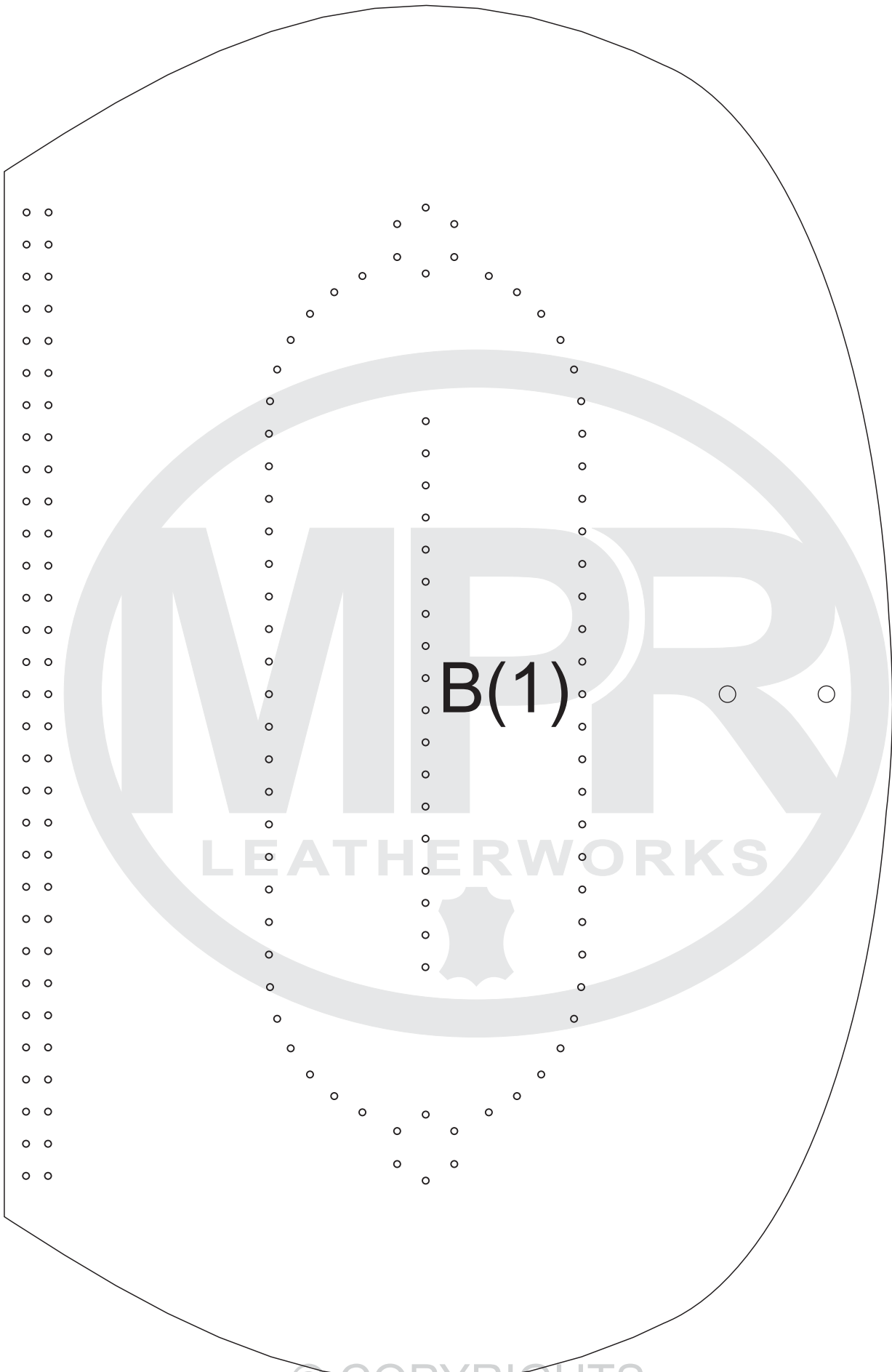
Mark the leather edge
at the dashed line
to align the
stitching holes to
part D.



Cut on line - pattern is joined here.

A(2)

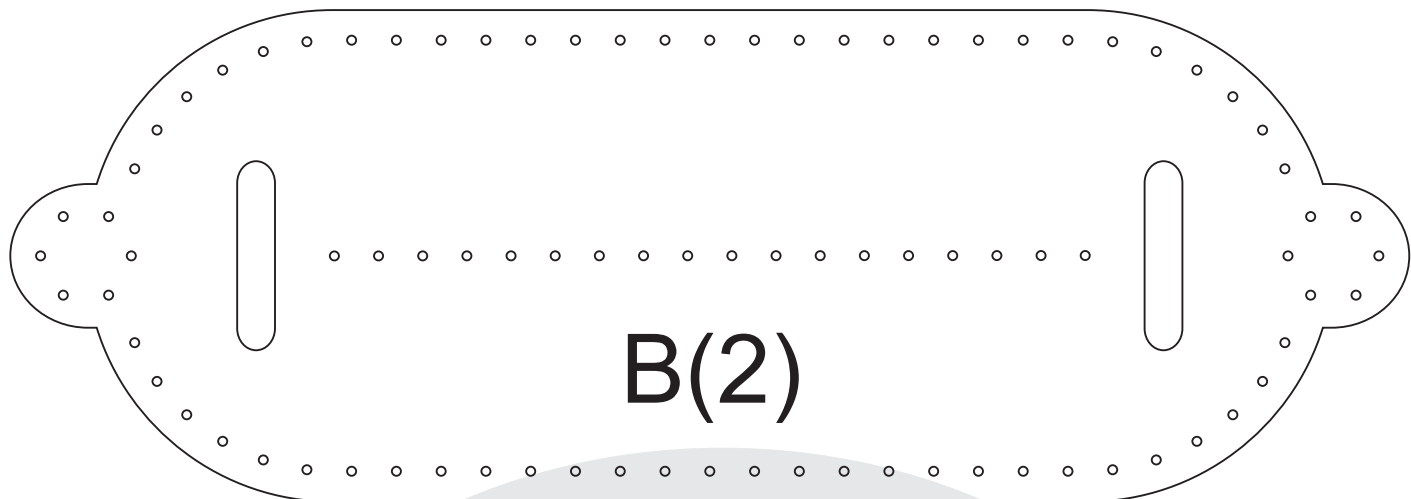
© COPYRIGHTS
www.miprleatherworks.co.za
P2 Mark the leather edge
at the dashed line to align
the stitching holes to part D.



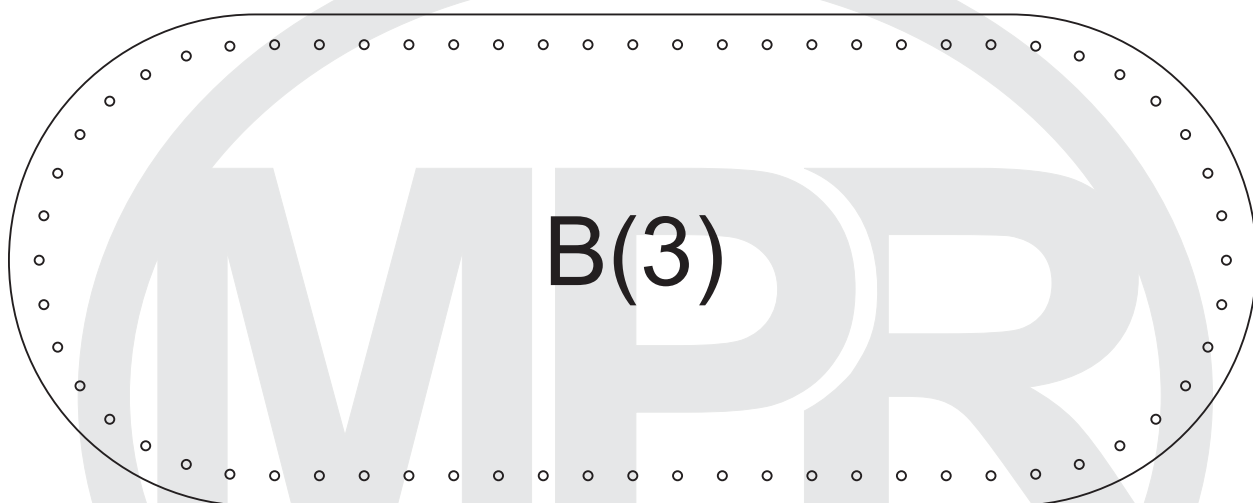
B(1)

© COPYRIGHTS

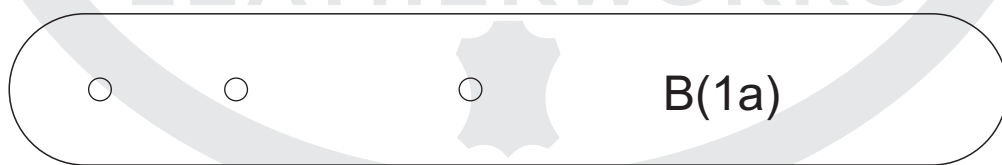
www.mprleatherworks.co.za



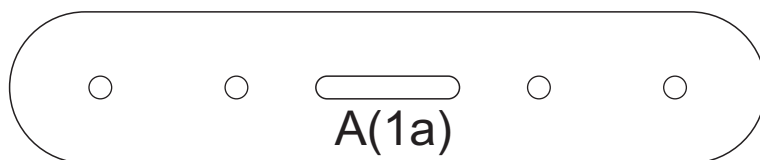
B(2)



B(3)



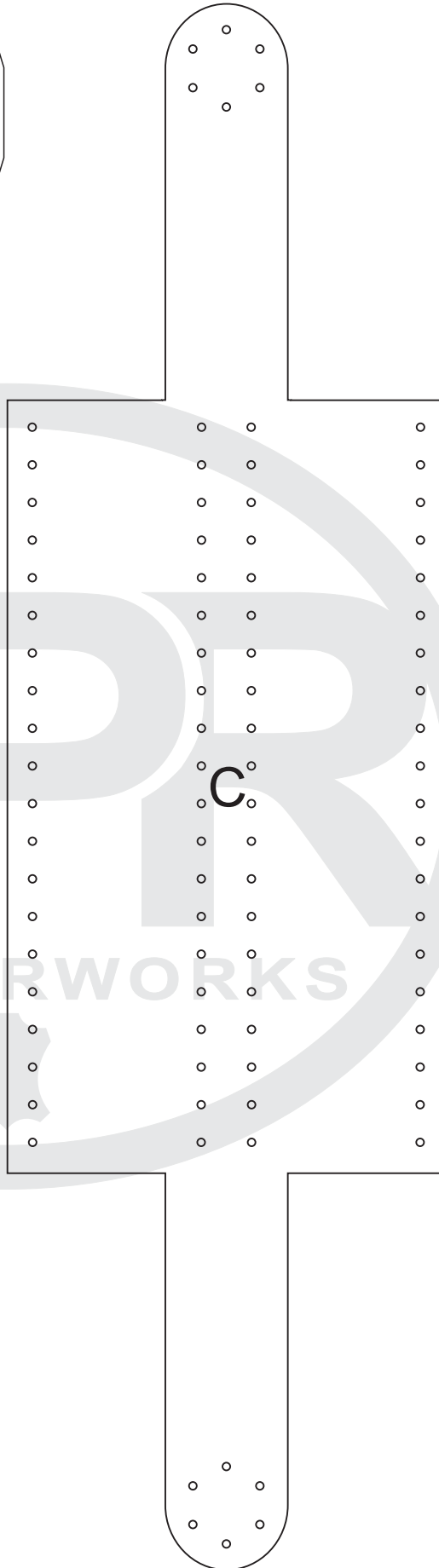
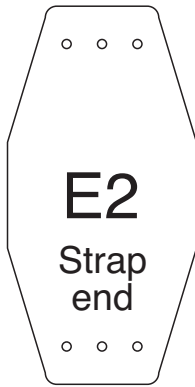
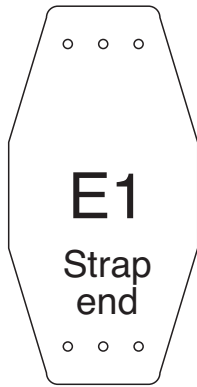
B(1a)

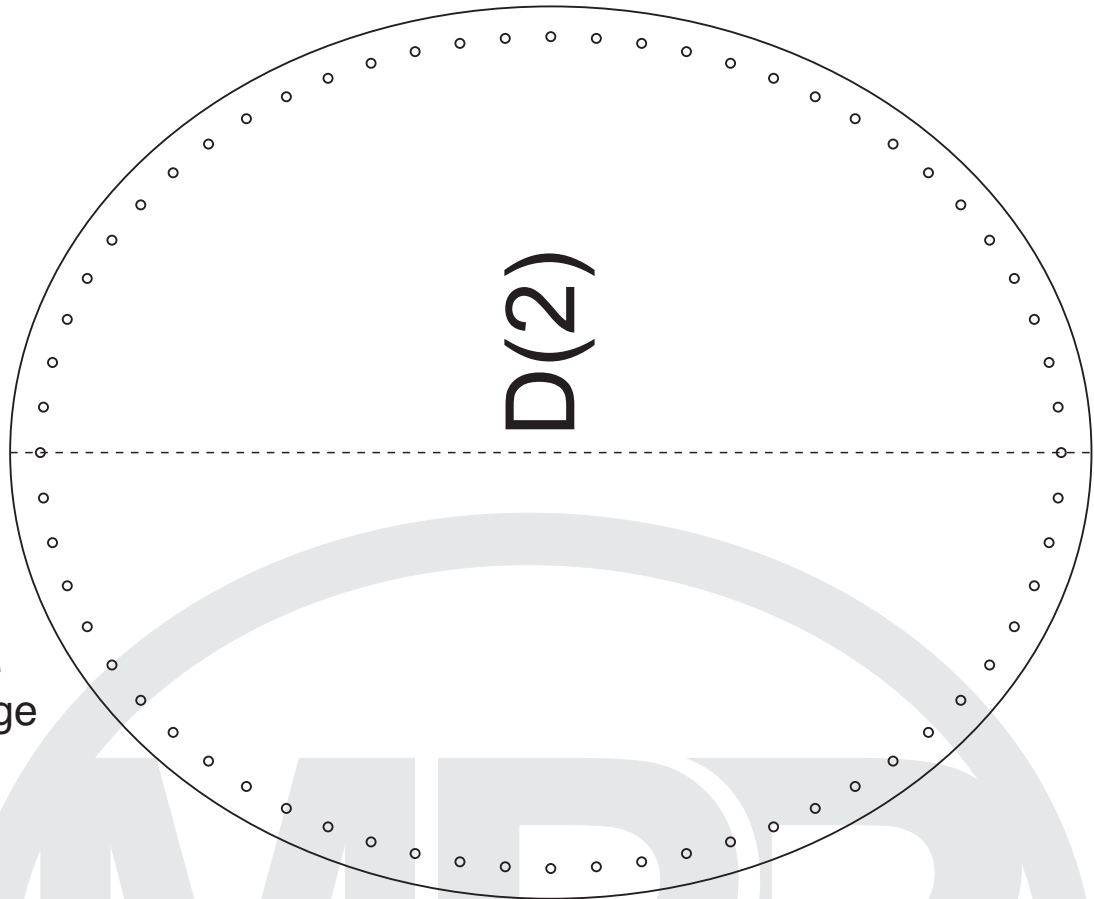


A(1a)

© COPYRIGHTS

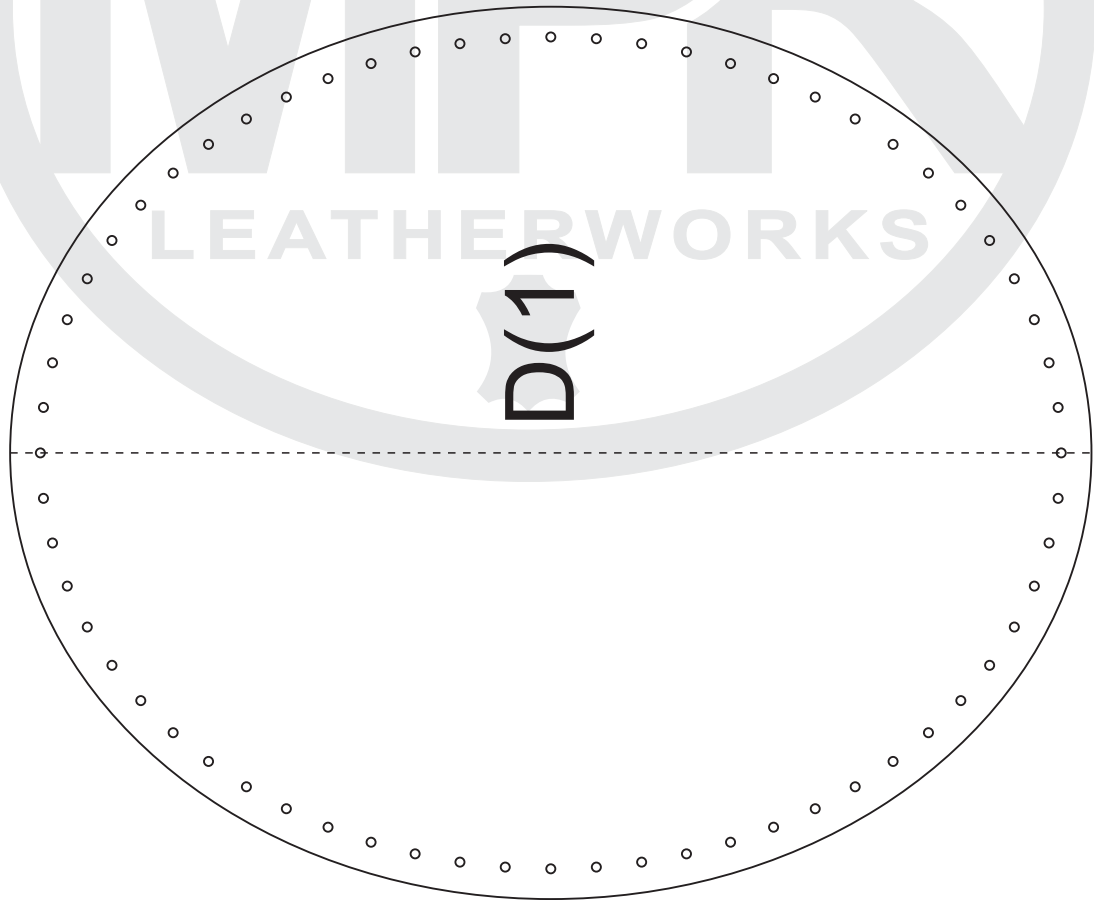
www.mprleatherworks.co.za





D(2)

Mark the leather edge at the dashed line to align the stitching holes to part A.



D(1)