



WUTA

A1 Full size Briefcase version

Cover internal support 2.0*1

Handle surface covered with leather 1.0*1

The handle bottom skin 2.0*1

The inner core of the handle
2.0*3

Inner leather for cover 1.0*1

Inside the bag
1.5*1

The shadow part is
the splicing area

The side part 1.0*2

Cut the underlined margins 2.0mm

Shaded areas bend or hollow bend to fit edges

After the piece 1.5*1

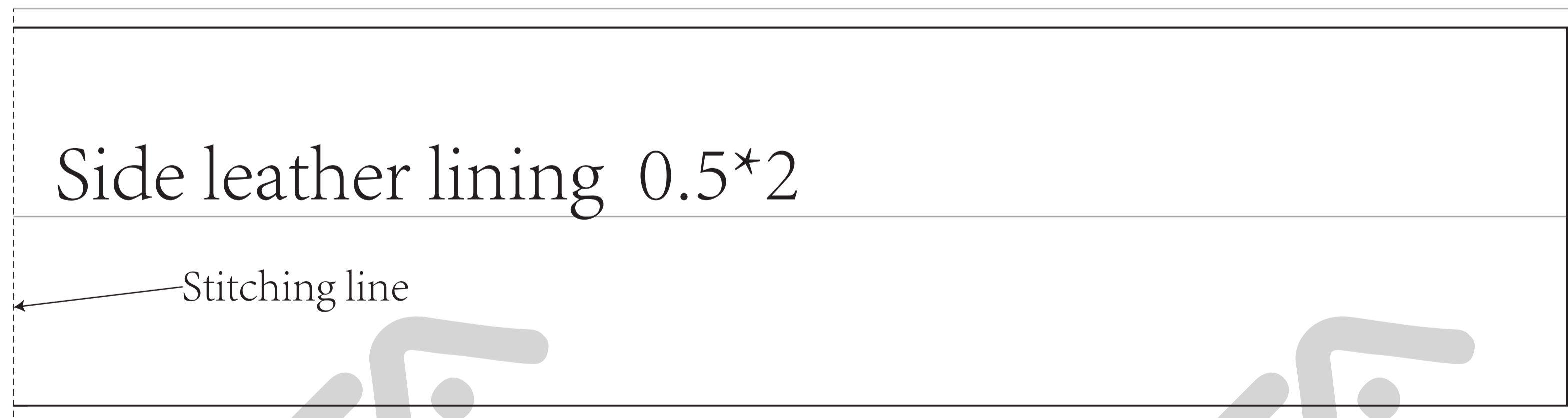
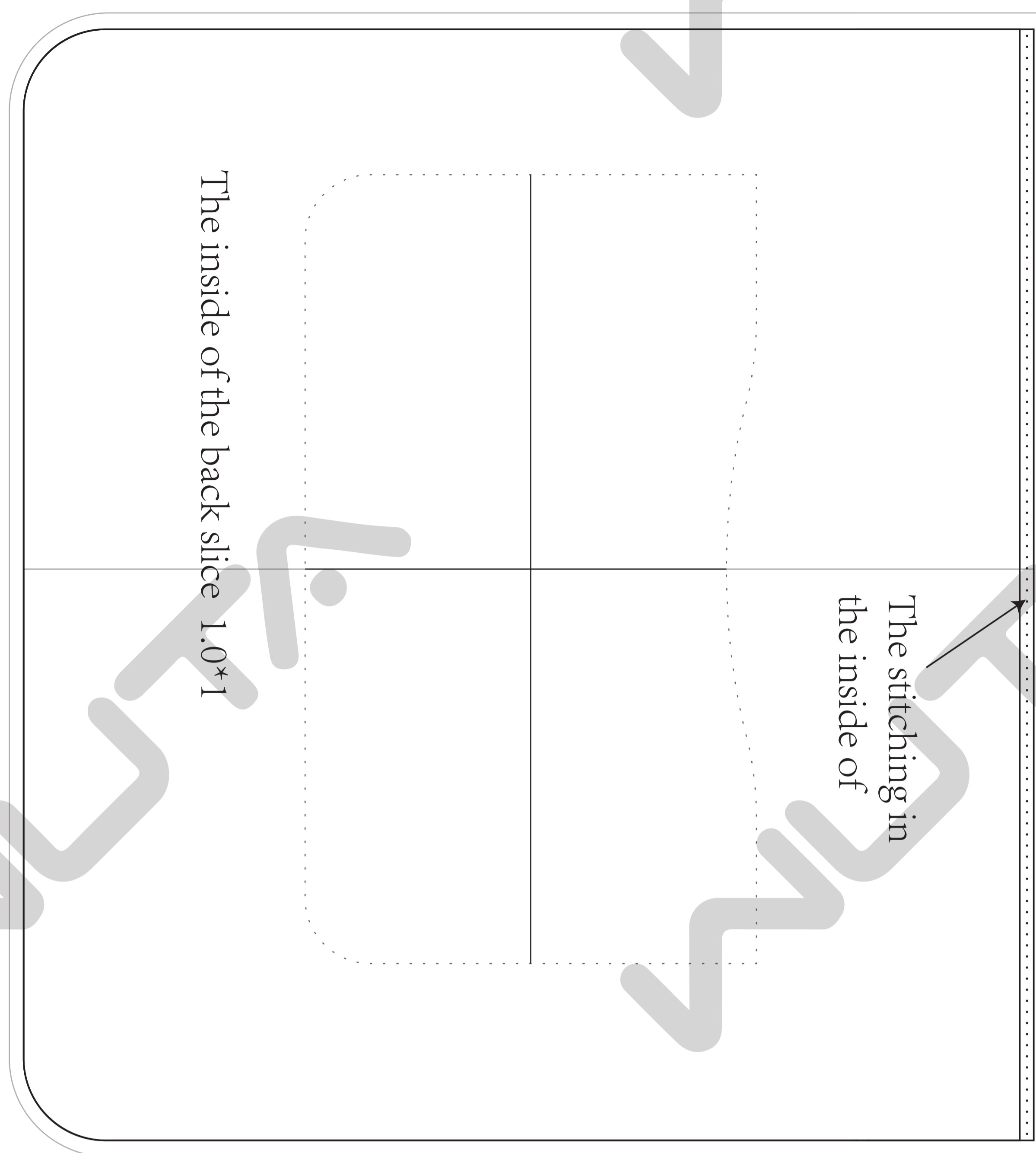
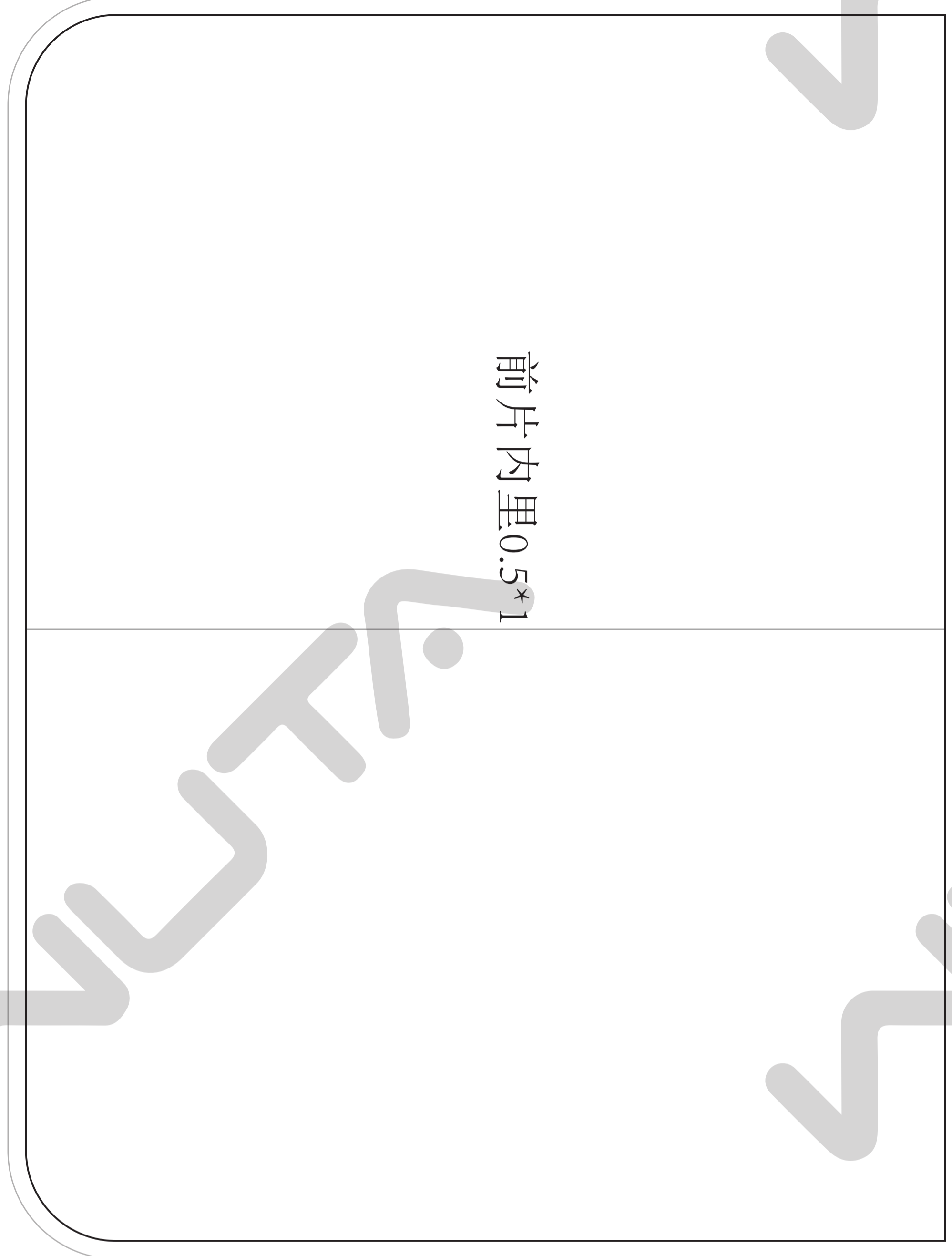
Before the piece 1.5*1

facebook/instagram: WUTA leather



WUTA

A1 Full size Briefcase version
facebook/instagram:WUTA leather



Note: Due to the large size of the briefcase version, the original size is A1(594mm × 841mm). If the original scale cannot be printed, please divide the drawings into 8 A4 (210mm × 297mm) drawings on average and then print them separately for stitching