

Cigarette Case



Materials:

5.5-6 oz leather for the body, gussets and the belt strap. 3-4 oz leather for closure strap.

Tools:

Scissors, knife (paper knife or rotary cutter would also work).

Stitching irons: my pattern is made for 5mm stitching irons (5 stitches per inch). If you are willing to use any other size please make sure that the hole count is the same where it has to be the same.

Needles - according to your thread size, a pair of harness needles.

Mallet.

Instructions:

Print the pattern at actual size (100%). Use the reference on top of each page to make sure everything is printed correctly. Join the pages together. Cut the pieces.

First, sew the belt strap onto the body. Note that body has 1 more hole on each side of each seam those stitches secure the edges of the belt strap. Same situation with the gusset, the body seams have 1 more hole on the back side to secure the edge of a gusset.

Fun part, sewing the gussets and the body together. If you have smaller fingers you have an advantage here. Note which holes should be lined up with the closure strap (starting 5th from the top on the front side and 6th from the top on the back side).

You should start stitching the gussets from the front side, sewing the closure strap on the front side with the same seam using 2 inner rows of holes of the closure strap.

It is an overlapping seam, body layer being on top (refer to the pictures of the case). When stitching the gusset to the back side don't forget to insert the very ends of the closure strap in between the gusset and the body. Sew both sides in this same way.

If you are using veg tan, you may want to help it fold in the right place. For this, dampen the folding line from the flesh side with water, close it, shape it, and let dry for a few hours.

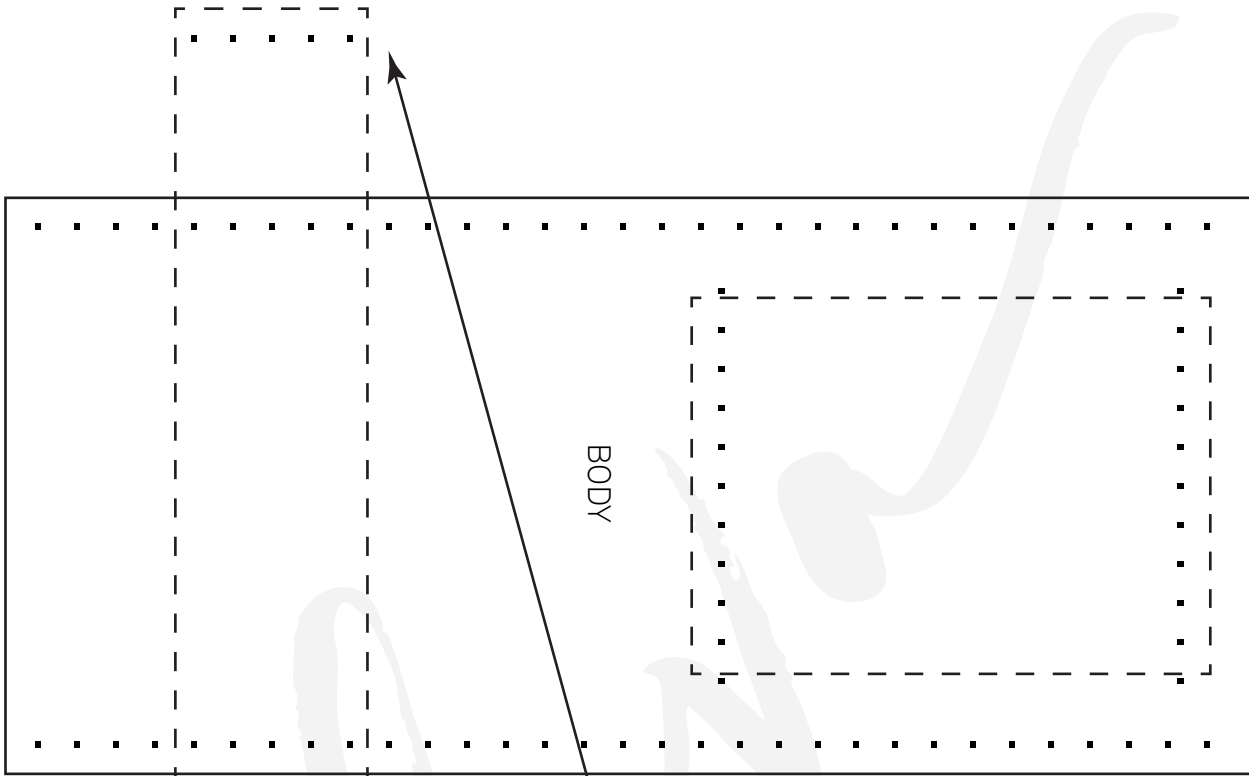
Any questions or comments, e-mail me: lissius@gmail.com.

Join our Karlova Leatherwork Patterns Group on Facebook!
www.facebook.com/groups/karlovadesign

0cm 1cm 2cm 3cm 4cm 5cm

A-1

1in 2in 3in



BODY

The closure strap ends are sewn in these holes

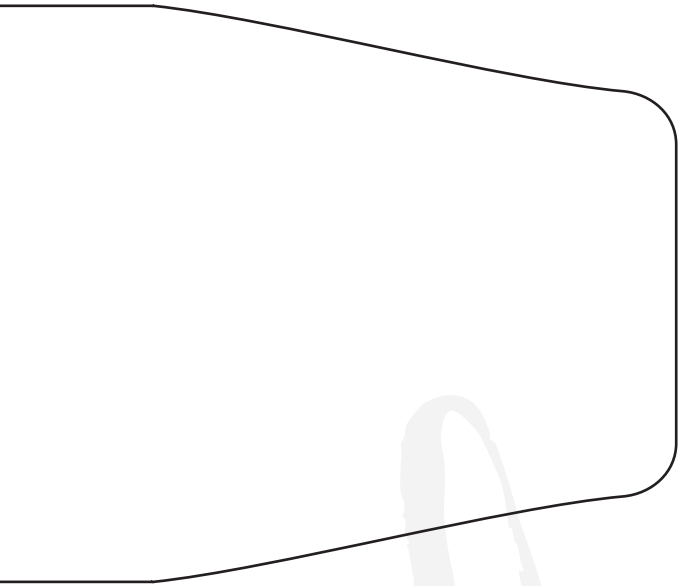
Tuck these ends into the back seam between the body and the gusset



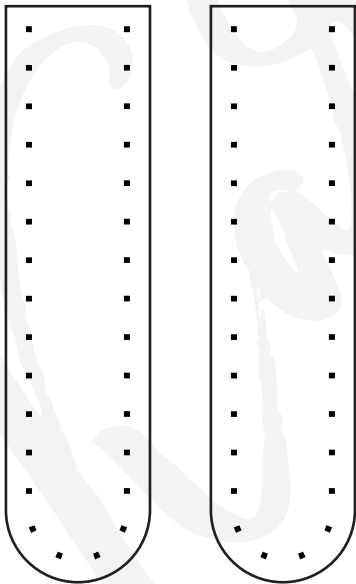
0cm 1cm 2cm 3cm 4cm 5cm

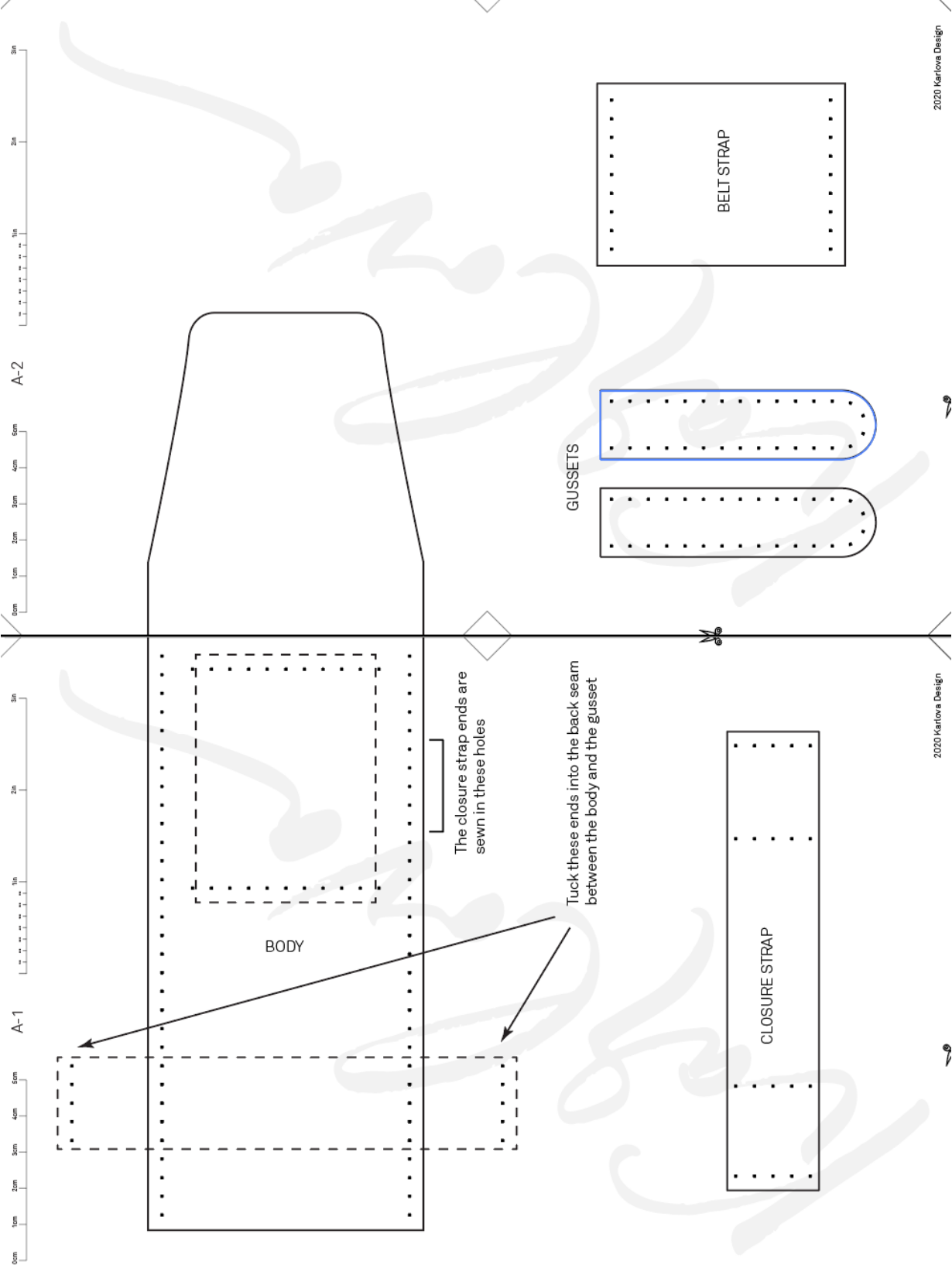
A-2

1in 2in 3in



GUSSETS





A-2

A-1

BODY

CLOSURE STRAP

BELT STRAP

GUSSETS

The closure strap ends are sewn in these holes

Tuck these ends into the back seam between the body and the gusset