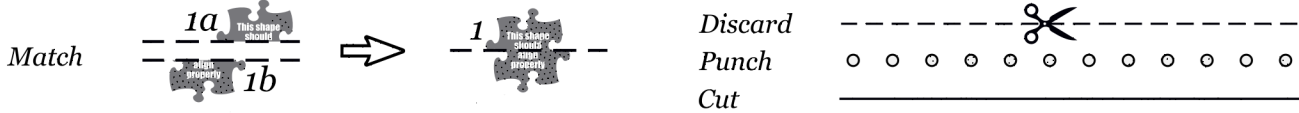


# Beret pattern



\*Use any type of paper but be sure you select **US Letter** as the printing format if it isn't automatically selected by default.

\*For headwear patterns, measure your head from the back to the forehead to get the size you need.



Print at **100%** scale for an approximately  
**630 mm** in head circumference or **US size 7 7/8**  
and measure the ruler on the right for accuracy

Print at **98.4%** scale for an approximately  
**620 mm** in head circumference or **US size 7 3/4**  
and measure the ruler on the right for accuracy

Print at **96.8%** scale for an approximately  
**610 mm** in head circumference or **US size 7 5/8**  
and measure the ruler on the right for accuracy

Print at **95.2%** scale for an approximately  
**600 mm** in head circumference or **US size 7 1/2**  
and measure the ruler on the right for accuracy

Print at **93.5%** scale for an approximately  
**590 mm** in head circumference or **US size 7 3/8**  
and measure the ruler on the right for accuracy

Print at **91.9%** scale for an approximately  
**580 mm** in head circumference or **US size 7 1/4**  
and measure the ruler on the right for accuracy

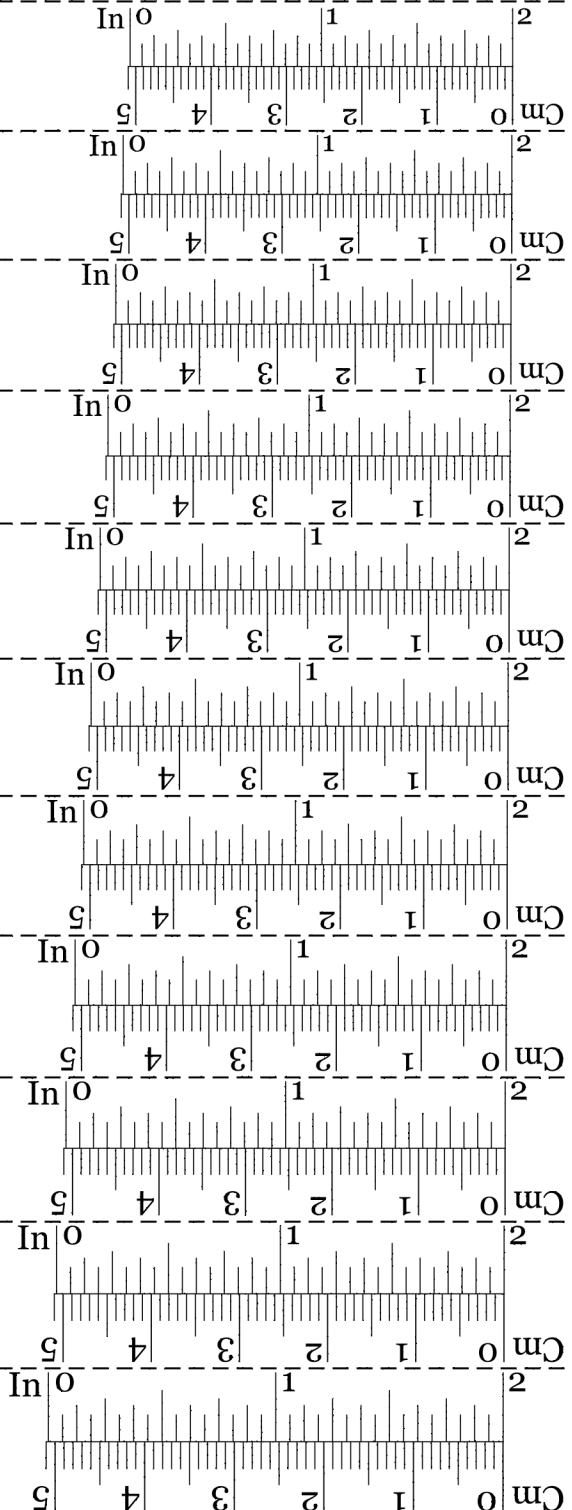
Print at **90.3%** scale for an approximately  
**570 mm** in head circumference or **US size 7 1/8**  
and measure the ruler on the right for accuracy

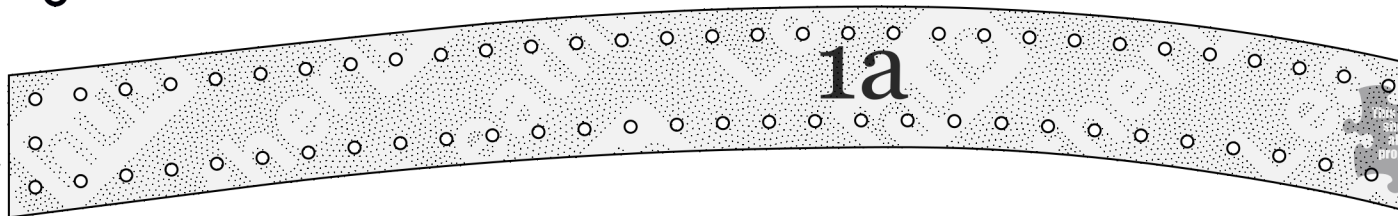
Print at **88.7%** scale for an approximately  
**560 mm** in head circumference or **US size 7**  
and measure this ruler for accuracy

Print at **87%** scale for an approximately  
**550 mm** in head circumference or **US size 6 7/8**  
and measure this ruler for accuracy

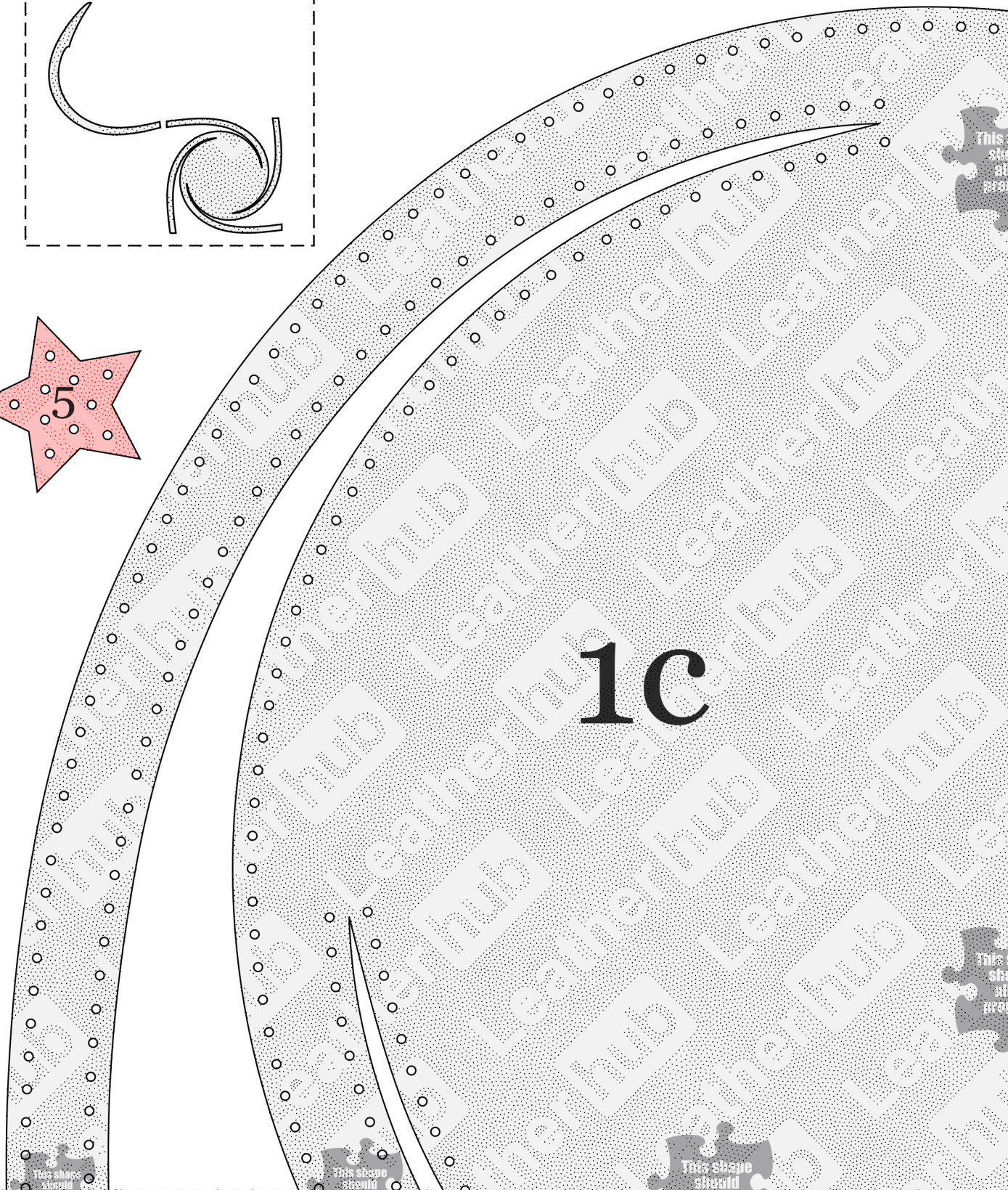
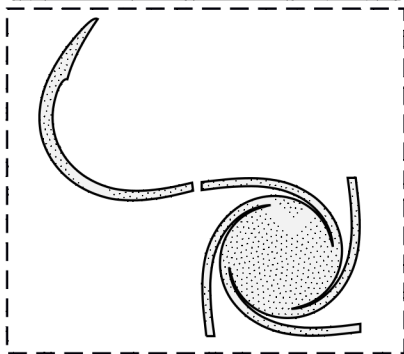
Print at **85.5%** scale for an approximately  
**540 mm** in head circumference or **US size 6 3/4**  
and measure this ruler for accuracy

Print at **84.1%** scale for an approximately  
**530 mm** in head circumference or **US size 6 5/8**  
and measure this ruler for accuracy





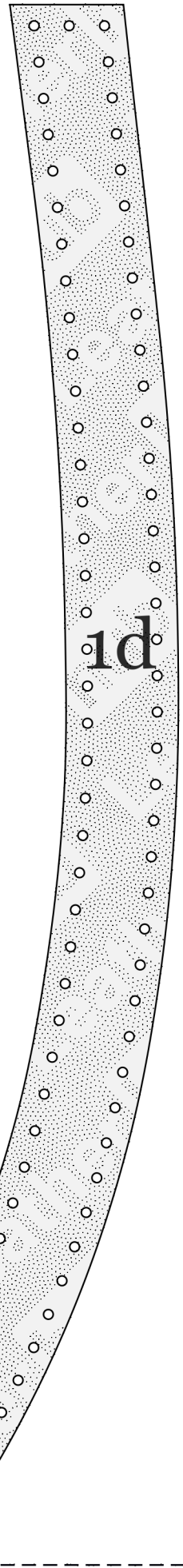
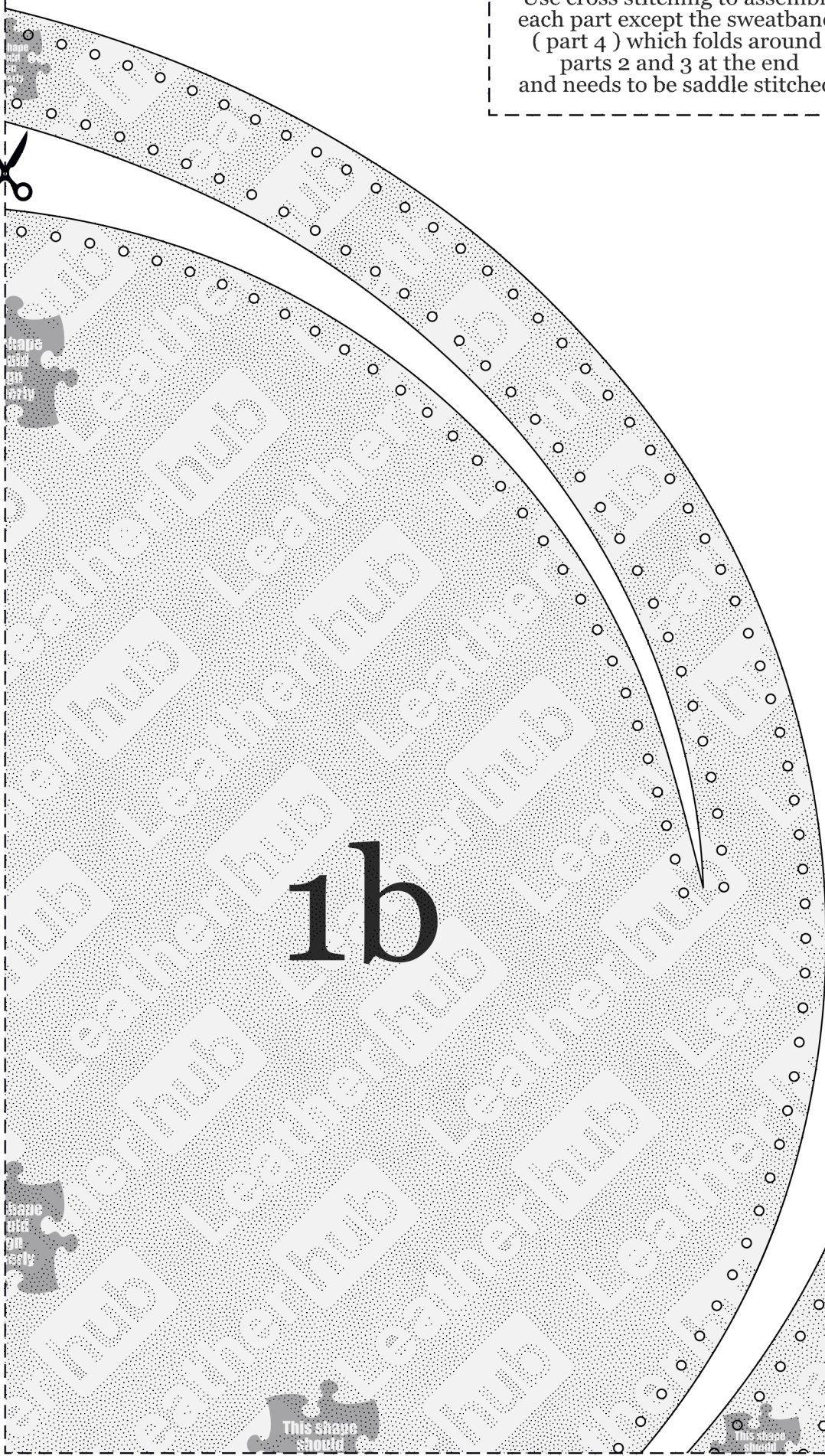
Parts 2, 3 join part 1 as shown in the figure below



Use cross stitching to assemble each part except the sweatband ( part 4 ) which folds around parts 2 and 3 at the end and needs to be saddle stitched.

1b

1d



1e

1g

1f



4a

4c

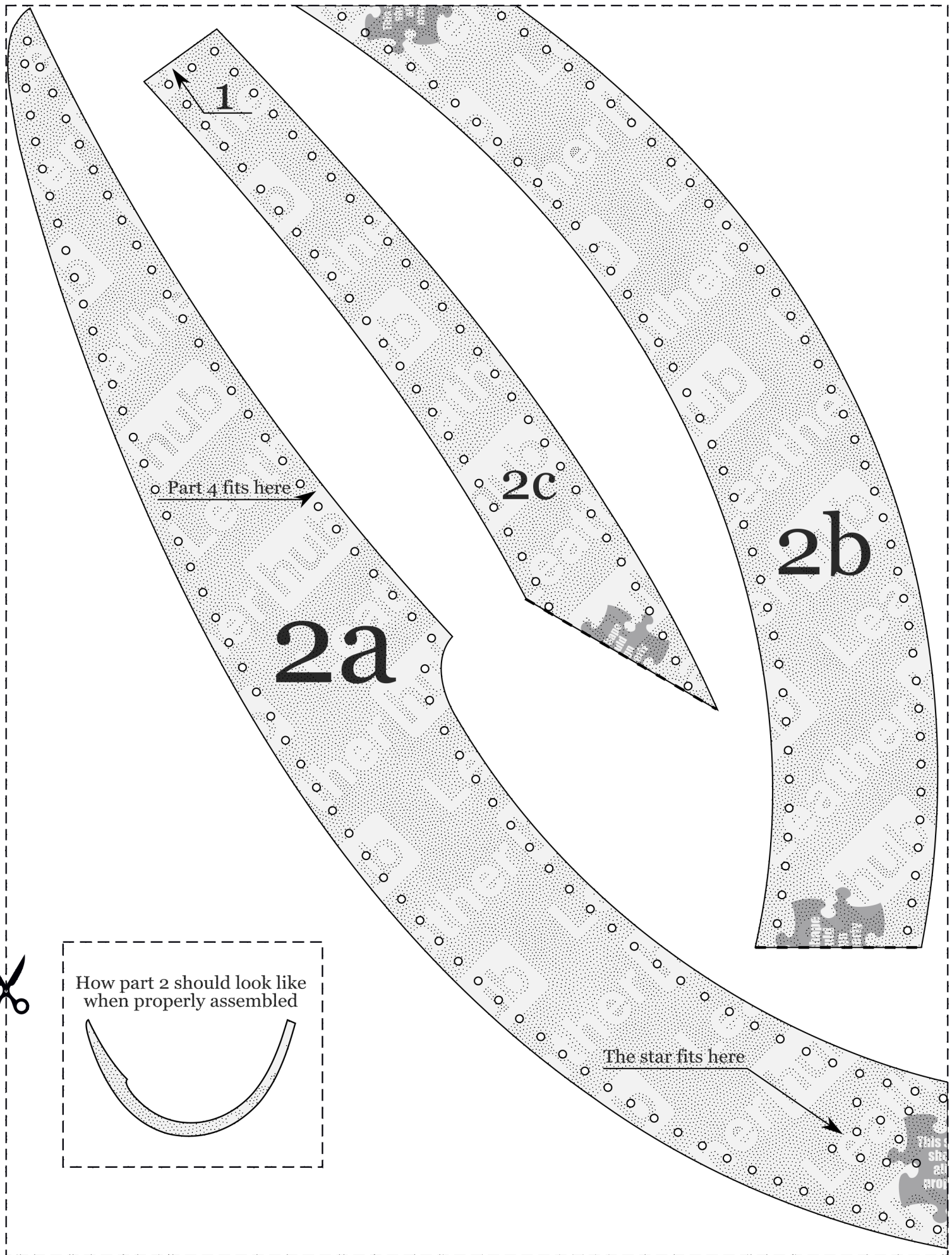
1h

1i

4b

4d





1

2c

2b

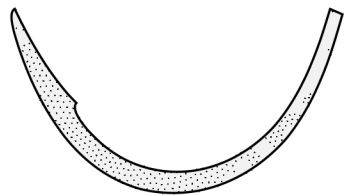
2a

Part 4 fits here

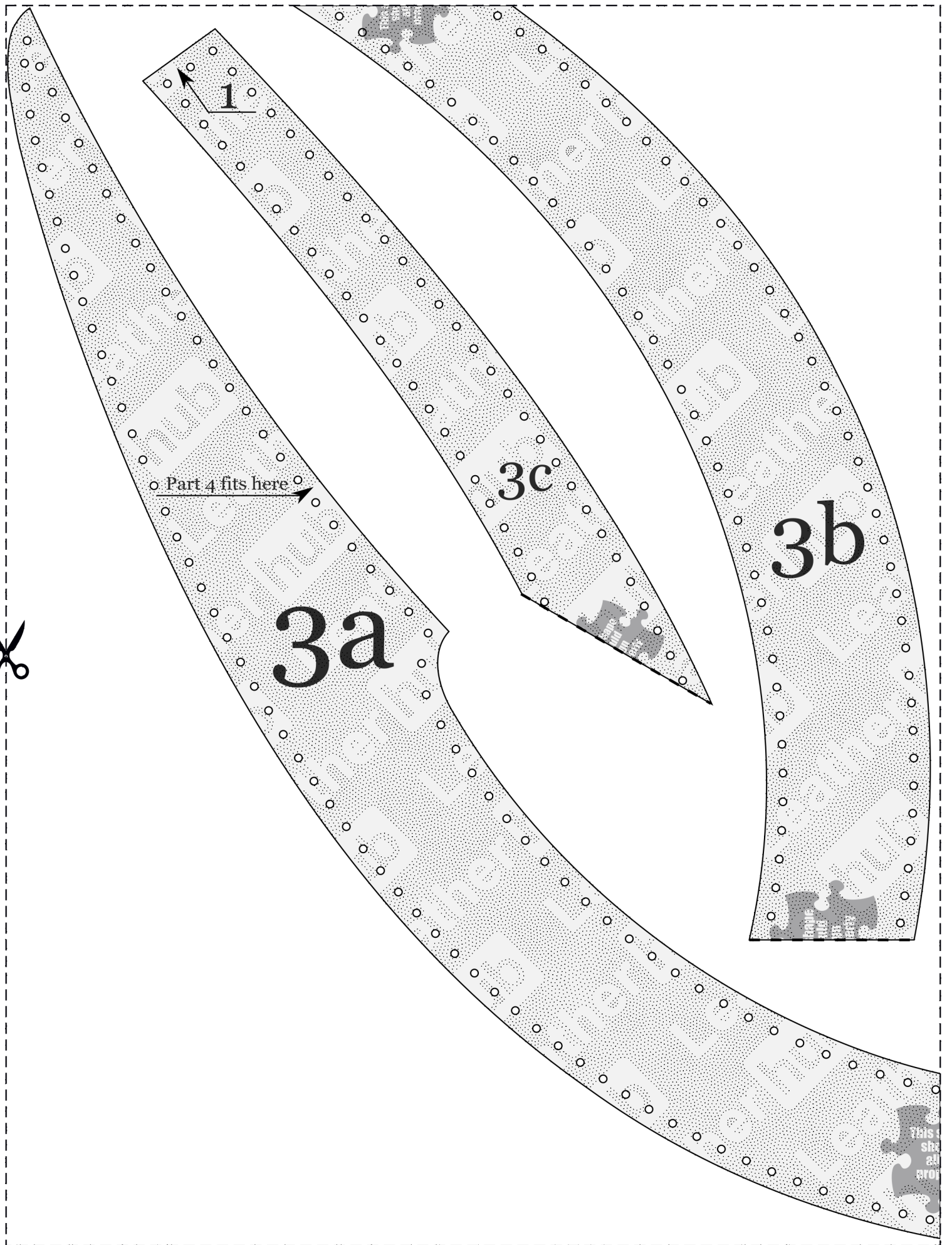
The star fits here



How part 2 should look like when properly assembled



This is the star



1

Part 4 fits here

3a

3c

3b

This is sh at pro



1

Part 4 fits here

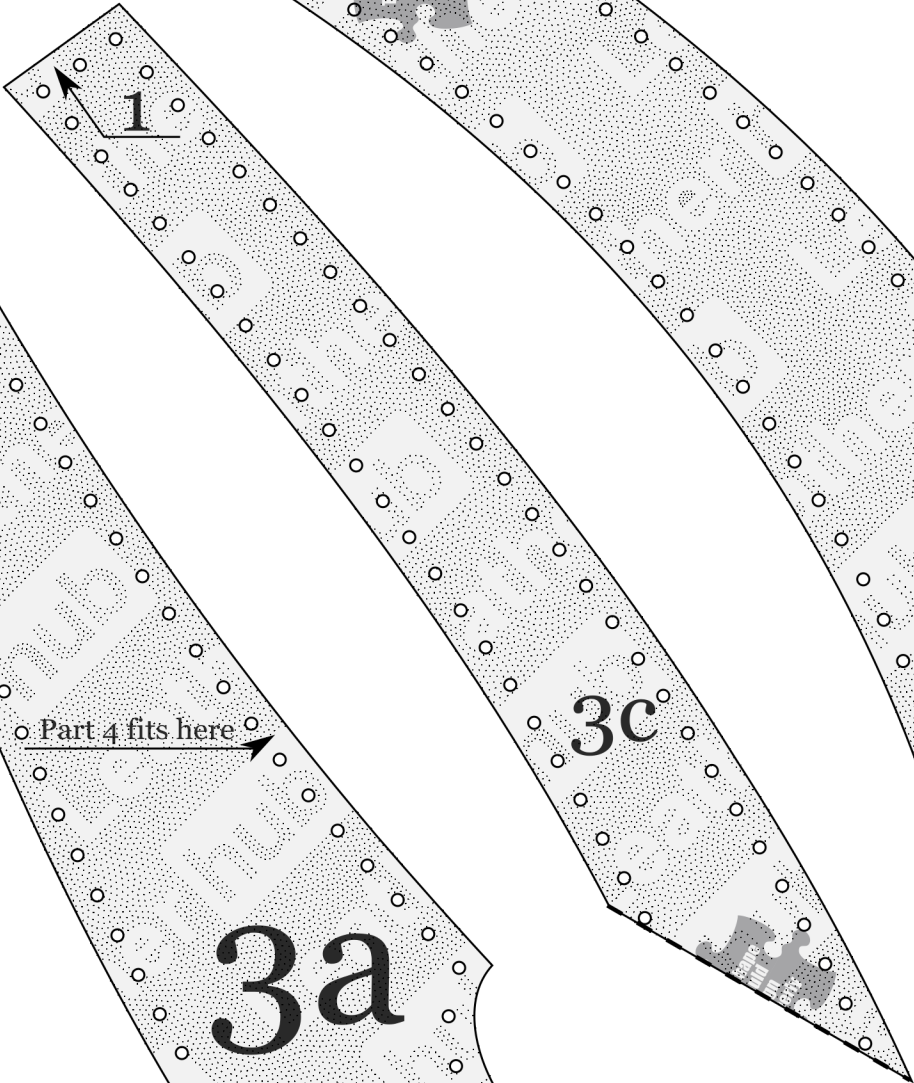
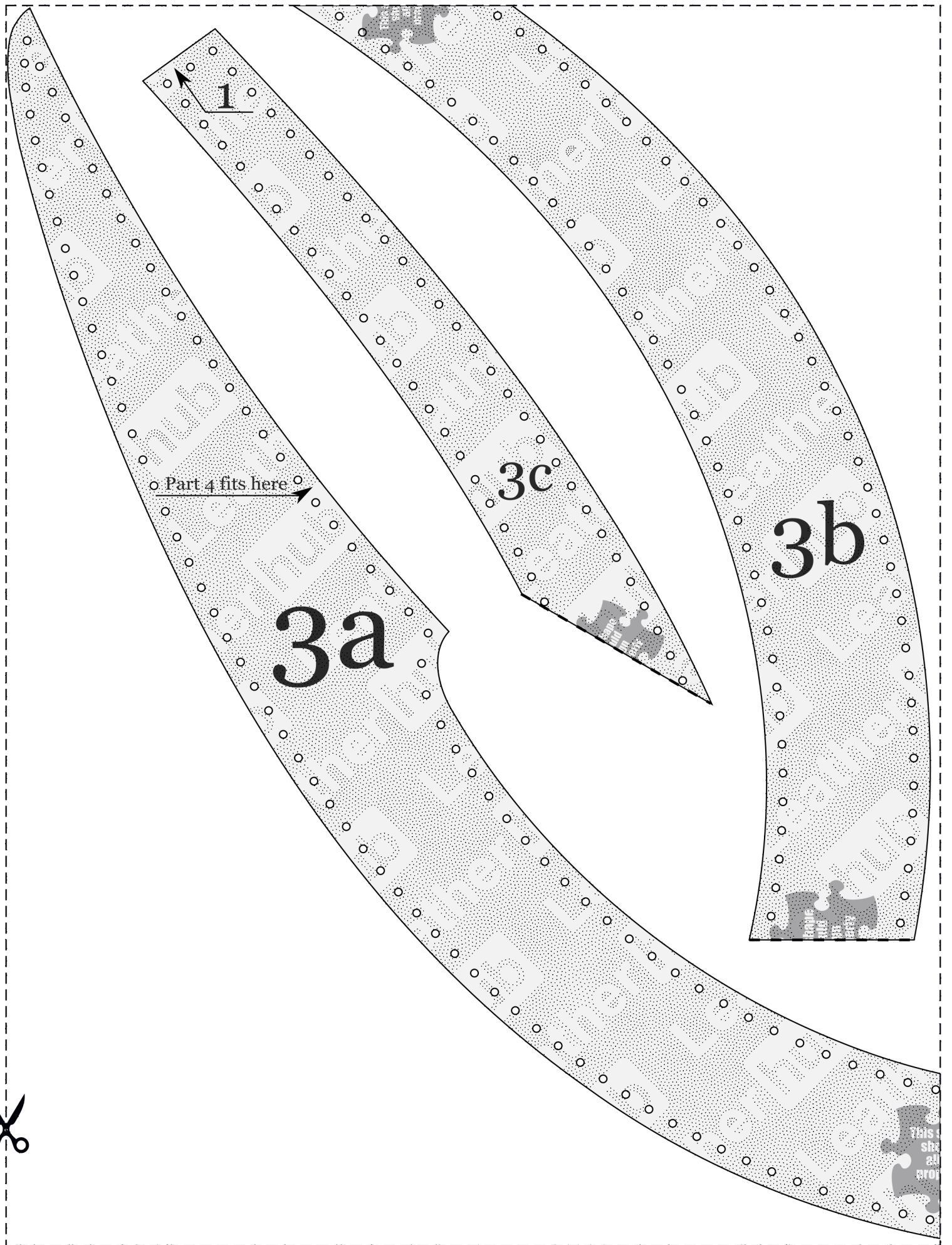
3a

3c

3b

This is  
sh  
at  
pro





o Part 4 fits here →

3a

3c

3b



This is  
sh  
at  
pro