



PRINTING INSTRUCTION

1. File > Print
2. Click on “Page Setup” button make sure your paper size is set to the paper size that you will print and Scale at 100%
3. In “Pages Sizing & Handling” click on “Size” button and select “Actual size”

The image shows two screenshots of software dialog boxes. The left screenshot is the 'Print' dialog box. It has a 'Page Sizing & Handling' section with a 'Size' button. A red callout box labeled 'Select Actual size' points to the 'Actual size' radio button. Another red callout box labeled 'Set the paper size' points to the 'Page Setup...' button at the bottom. The right screenshot is the 'Page Setup' dialog box. A red callout box labeled 'Select the paper size' points to the 'Paper Size' dropdown menu, which is set to 'A4'. Another red callout box labeled 'Scale 100%' points to the 'Scale' input field, which is set to '100%'. Both screenshots also show 'Cancel' and 'OK' buttons.

IMPORTANT NOTE:

- **ADOBE ACROBAT READER (FREE SOFTWARE)** is recommended to open and print the patterns

link for free download

<https://get.adobe.com/reader>



LEATHER

CraftsmanGus Pattern

Crossbody Bag : Toaster S

CBB 002A


Main Body Front & Back

1.5-1.8mm Chrome or Veg Tanned Leather Recommended

Overlapping area

Top edge/border of base gusset

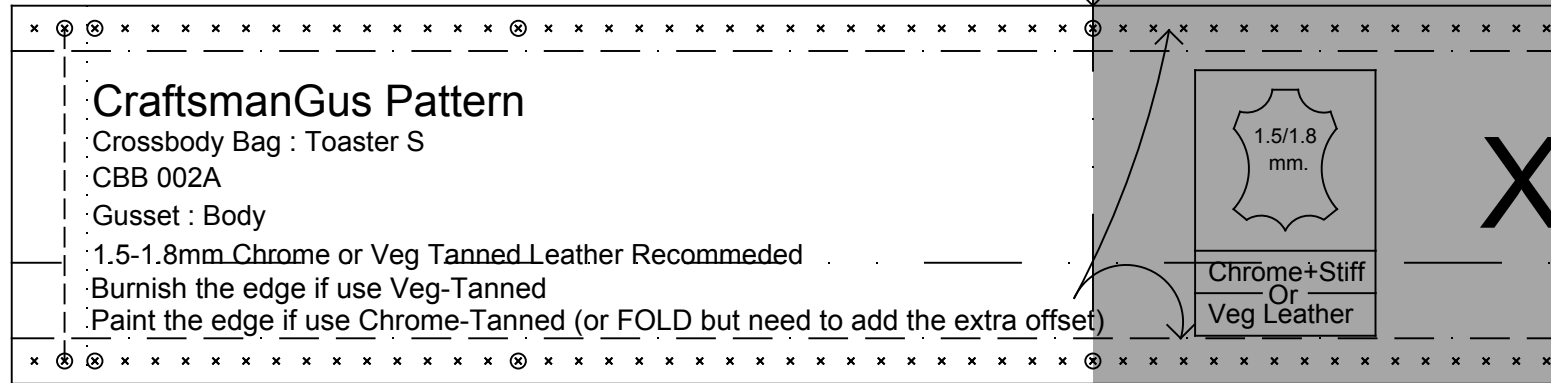
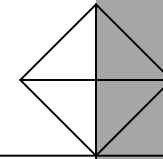
Bottom edge/border of top/zipper gusset

| |
|---|
|  <p>1.5/1.8 mm.</p> |
| <p>Chrome+Stiff Or Veg Leather</p> |

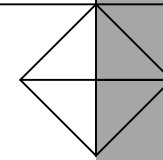
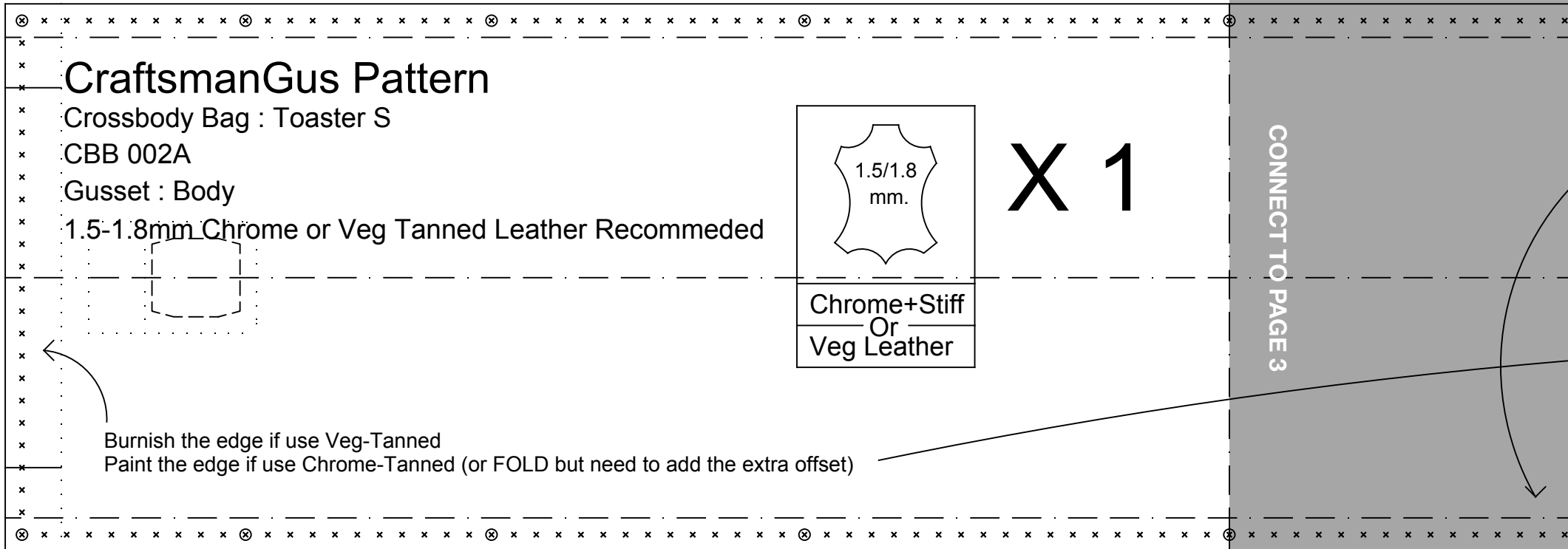
X 2

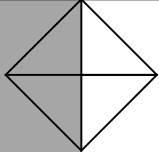
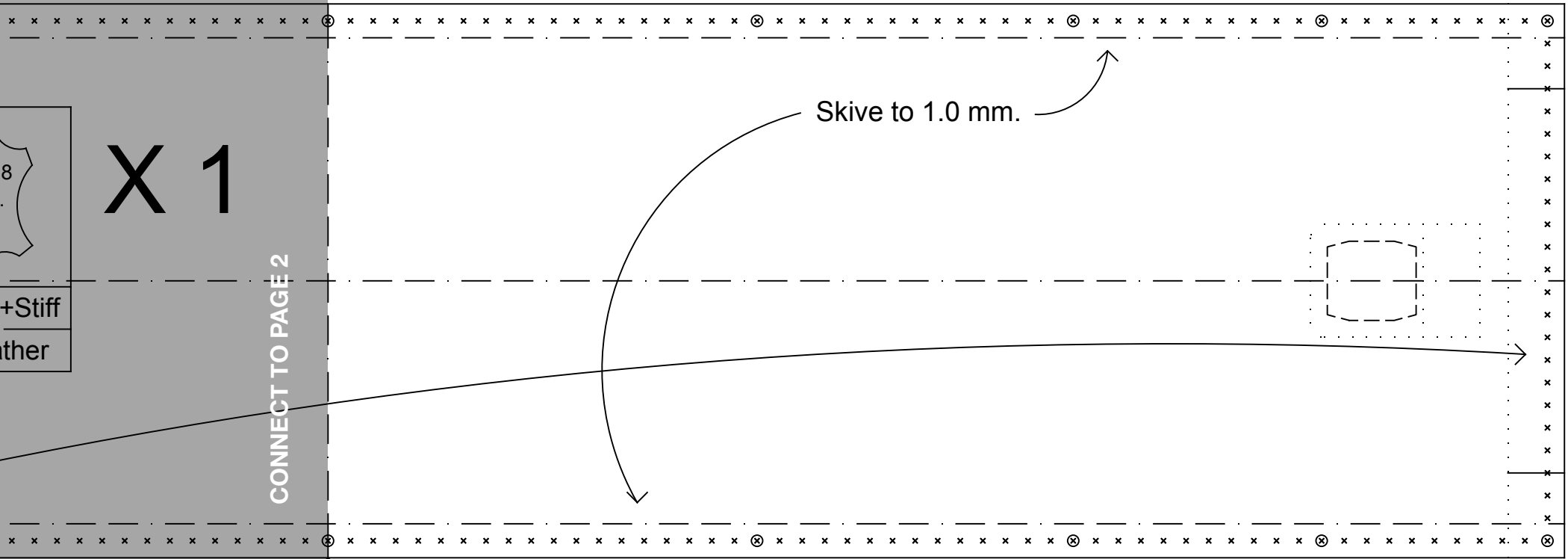
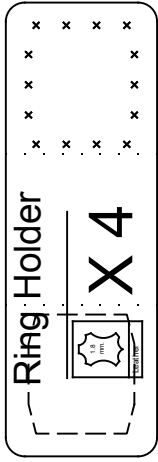
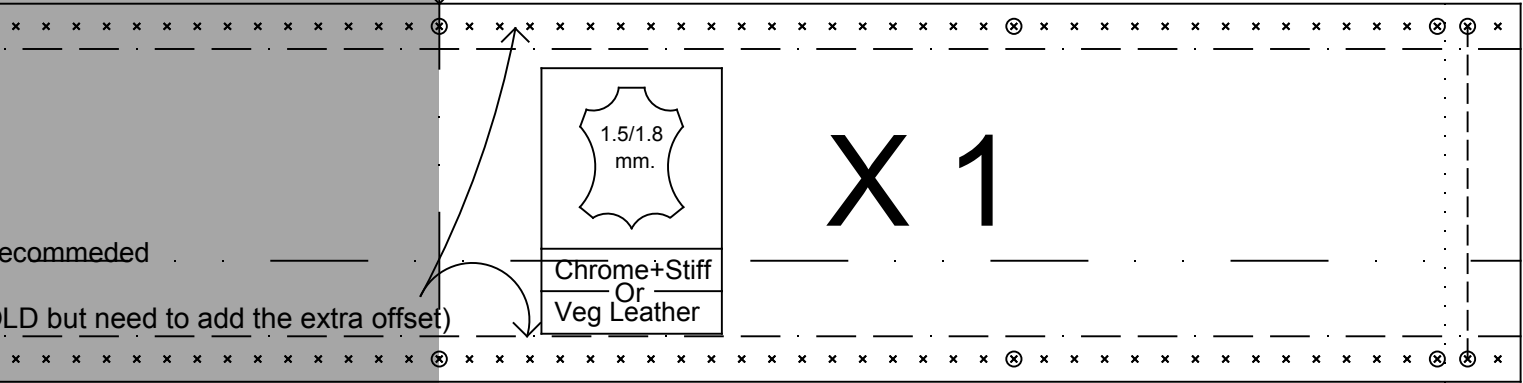
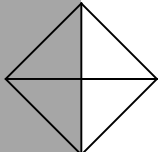
Burnish the edge if use Veg-Tanned

Paint the edge if use Chrome-Tanned (or FOLD but need to add the extra offset)(Fold over pattern need to draw 1 cm. ext)



LEATHER







FABRIC LINING

Fold the excess fabric lining border over the stiffener

CraftsmanGus Pattern

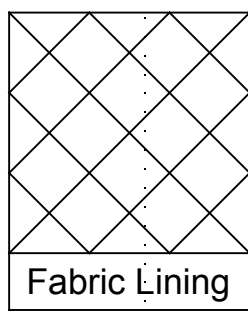
Crossbody Bag : Toaster S

CBB.002A

Front/Back Panel

Canvas/Cotton/Denim Lining Fabric Recommended

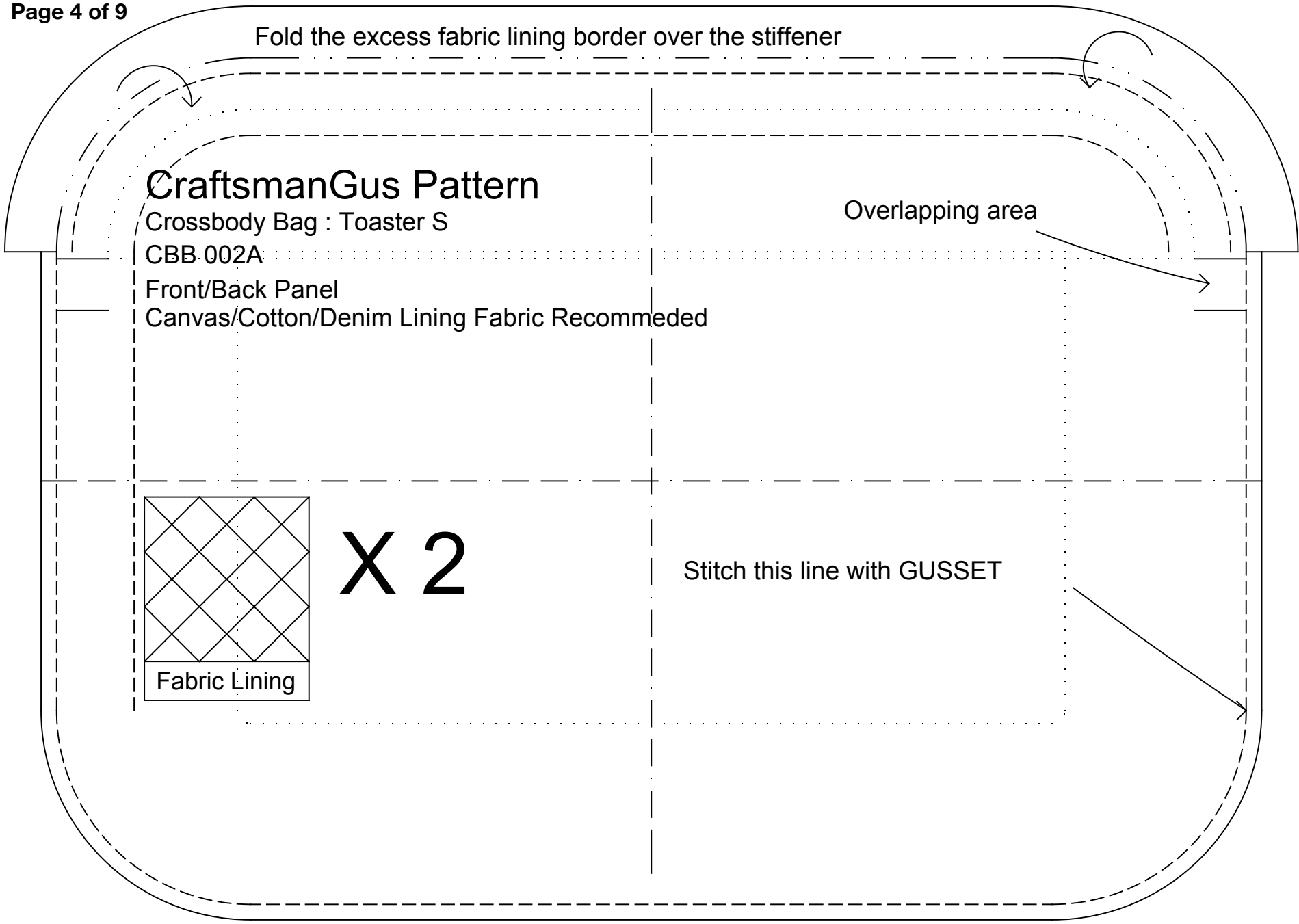
Overlapping area



Fabric Lining

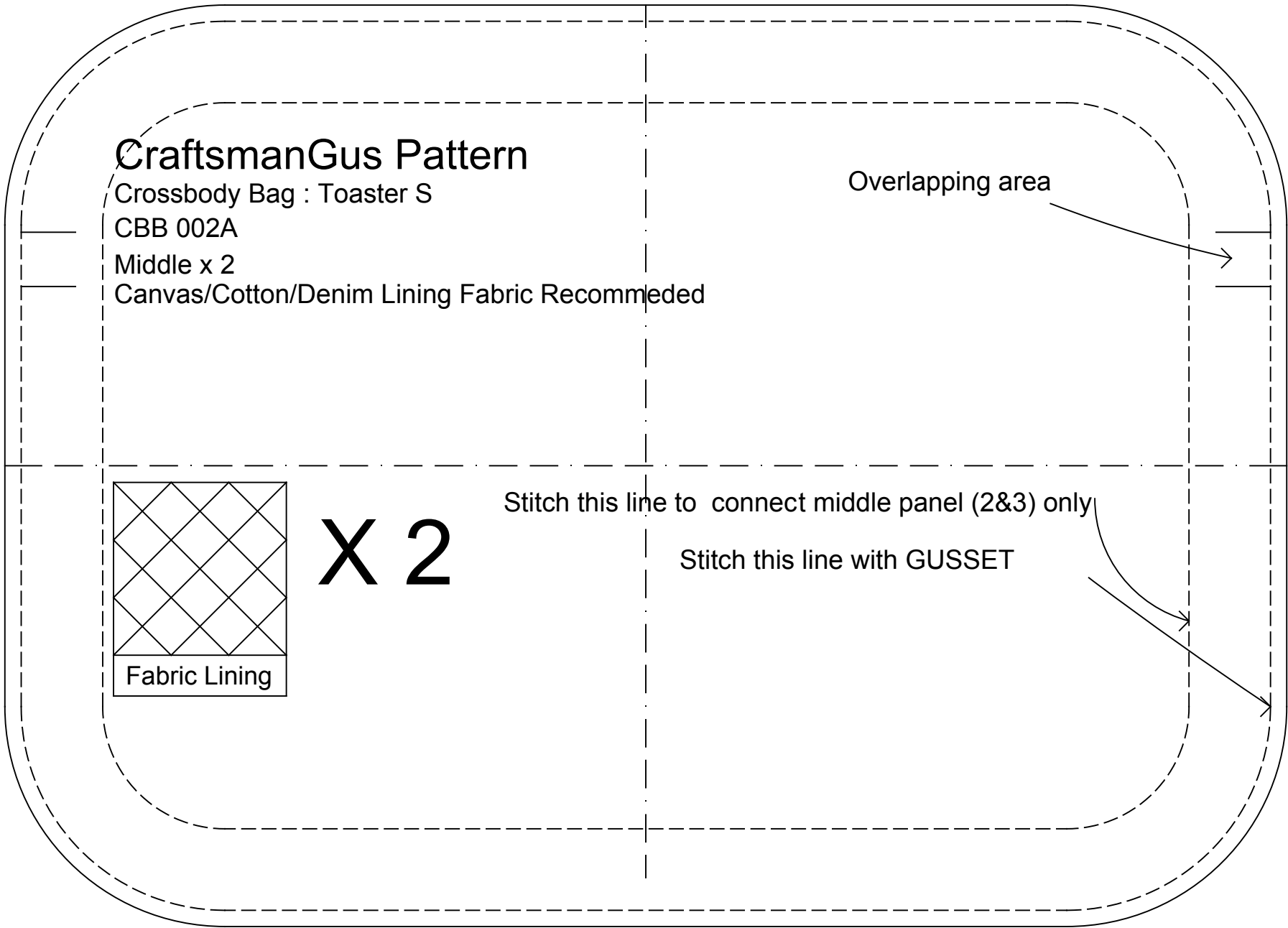
X 2

Stitch this line with GUSSET





FABRIC LINING





FABRIC LINING

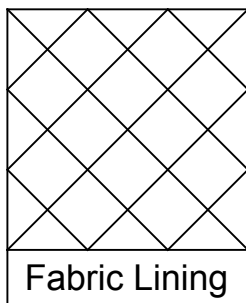
CraftsmanGus Pattern

Crossbody Bag : Toaster S

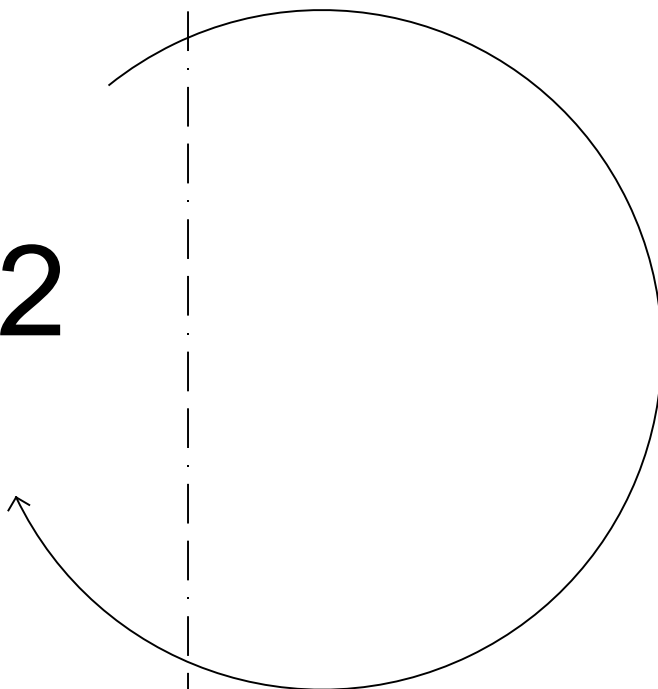
CBB 002A

Front/Back Pocket

Canvas/Cotton/Denim Lining Fabric Recommended



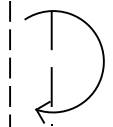
X 2



LEATHER

CraftsmanGus Pattern

Crossbody Bag : Toaster S
CBB-002A

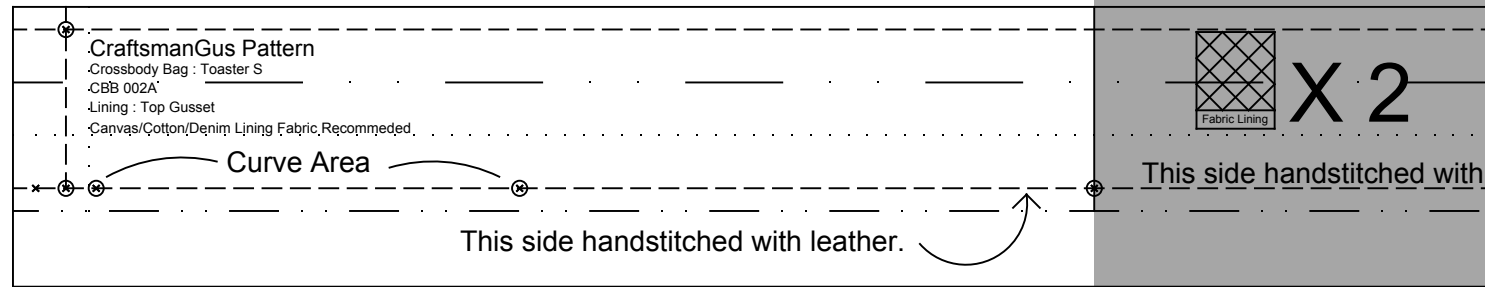
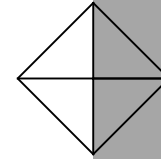


Pocket Binding
0.7 mm Veg Tanned Leather (Spilted)

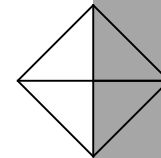
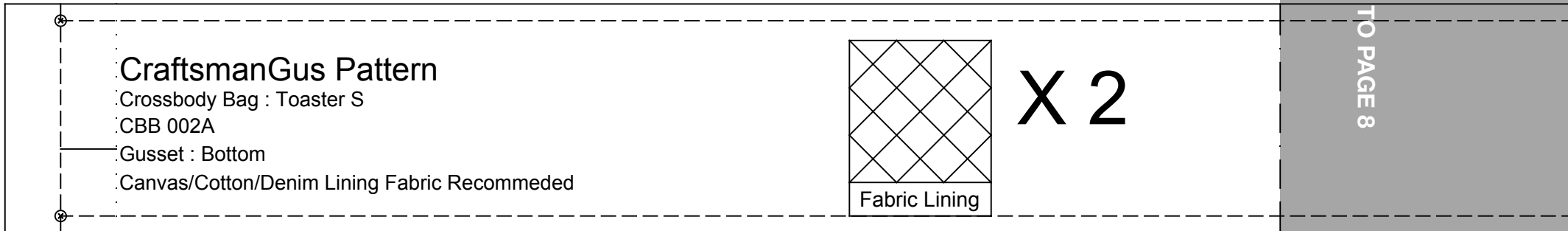
X2



FABRIC LINING

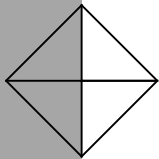
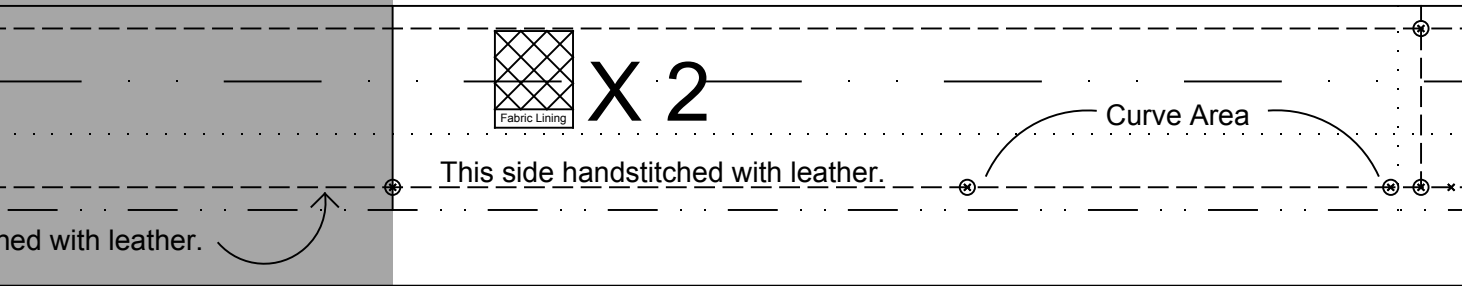
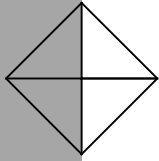


CONNECT TO PAGE 8





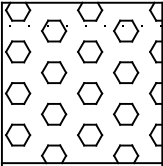
FABRIC LINING





TEXON/ STIFFENER

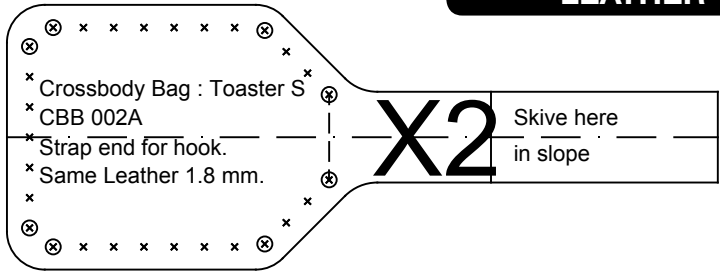
CraftsmanGus Pattern
Crossbody Bag : Toaster S
CBB 002A
Stiffener for front and back
Texon or drawing paper in 0.3-0.5 mm.



Stiffener (Hard)

X 2

LEATHER



X2 Skive here
in slope

* Crossbody Bag : Toaster S
* CBB 002A
* Strap end for hook.
* Same Leather 1.8 mm.



X2

Crossbody Bag : Toaster S
CBB 002A
Strap end for hook.
Same Leather 1.8 mm.