



<https://www.moodfabrics.com/blog/the-cory-jacket-free-sewing-pattern/>



#MoodCoryPattern

“The Cory Jacket”

All-Gender Sizes 32 to 56

Formatted for both
US Letter & A4 Paper

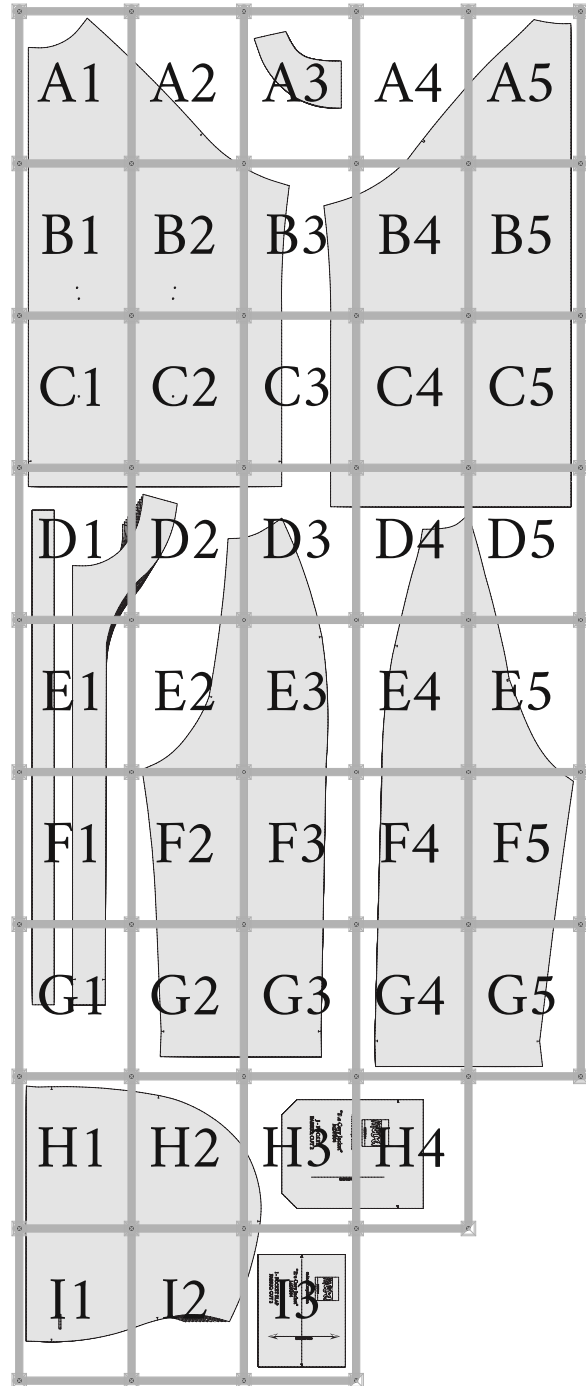
Trimless Option: This is the fastest! No trimming needed! Place left-side margins over right-side margins, overlapping dashed lines and dots. In the same fashion, top margins will overlap bottom margins. Slight unprinted gaps are normal for this method.

Trimmed Option: This removes any unprinted gaps. Trim along the top and right margins at the dashed lines. Overlap the trimmed margins to the untrimmed margins, matching dashed lines and dots.

Tip! Build rows first, then join the rows together as you go.

STOP!

Print only this page first to check accuracy.
The Mood square to the left should measure 2 inches.
Print “actual size” in “portrait” mode (not auto center).
Formatted for both US Letter & A4 paper sizes.



©2022 MoodFabrics.com / MoodSewciety.com
Mass production, resale, or distribution of this
pattern in any form is strictly prohibited.



"The Cory Jacket"

#MoodCoryPattern

All-Gender Sizes 32 to 56

BODY MEASUREMENTS - IN INCHES													
ALL-GENDER SIZES	32	34	36	38	40	42	44	46	48	50	52	54	56
CHEST / BUST	32	34	36	38	40	42	44	46	48	50	52	54	56
WAIST	26.6	28.5	30.5	32.5	34.5	36.5	38.5	40.5	42.5	44.5	46.5	48.5	50.5
HIPS	31.5	33.5	35.5	37.5	39.5	41.5	43.5	45.5	47.5	49.5	51.5	53.5	55.5
APPROXIMATE FINISHED GARMENT MEASUREMENTS - IN INCHES													
ALL-GENDER SIZES	32	34	36	38	40	42	44	46	48	50	52	54	56
FULL CHEST / BUST	44	46	48	50	52	54	56	58	60	62	64	66	68
HIPS	42.5	44.5	46.5	48.5	50.5	52.5	54.5	56.5	58.5	60.5	62.5	64.5	66.5

Fitting notes: Drafted for woven fabrics. As an outwear garment, the fit is oversized for layering over other garments. Unisex sizing: choose size according to your desired finished garment measurements and blend between sizes as needed. As a best practice, sew a test garment to evaluate the fit for possible adjustments.

We love creating these free patterns for the community and we want to keep them free! In return, we hope you check out MoodFabrics.com for your next project!

Want to use one of our patterns to make a garment to sell? Our patterns are royalty-free! We just ask that you credit us with MoodSewciety.com or MoodFabrics.com in your product description.

♥ The Mood Sewciety Team

FOR SEWING INSTRUCTIONS:

Scan the QR code or visit
MoodSewciety.com and search
"MDF304"



1/2" seam allowances (SA's) included
unless stated otherwise.

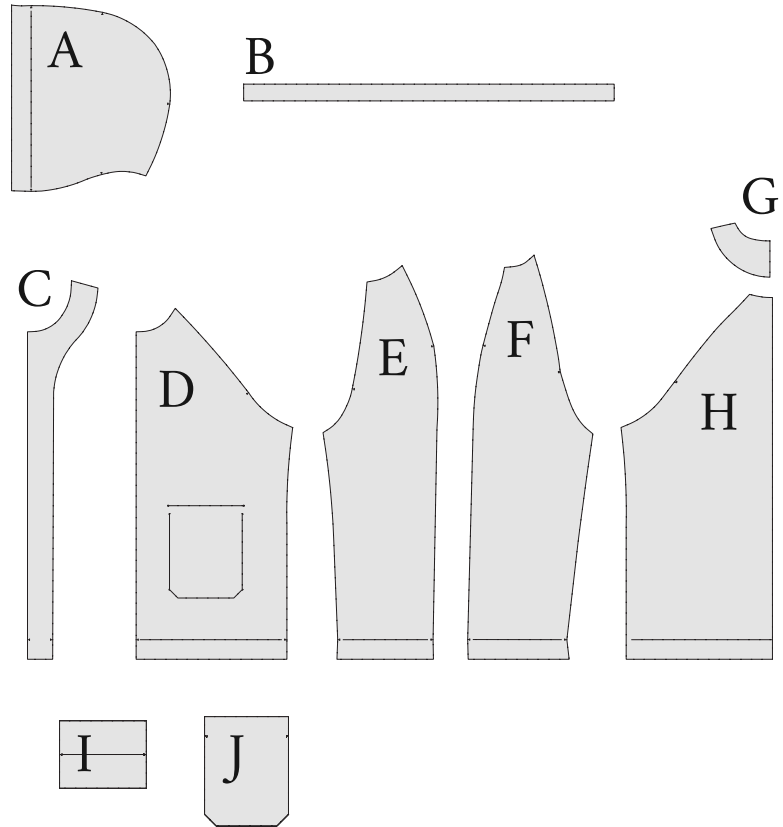
©2022 MoodFabrics.com / MoodSewciety.com
Mass production, resale, or distribution of this
pattern in any form is strictly prohibited.



MDF304
 "The Cory Jacket"
 All-Gender Sizes 32 to 56

#MoodCoryPattern

A	A - HOOD FABRIC: CUT 2 LINING: CUT 2 MIRRORED PAIR
B	B - DRAWSTRING FABRIC: CUT 1 ON FOLD OR CUT 2
C	C - FRONT FACING FABRIC: CUT 2 MIRRORED PAIR
D	D - FRONT FABRIC: CUT 2 LINING: CUT 2 MIRRORED PAIR
E	E - FRONT SLEEVE FABRIC: CUT 2 LINING: CUT 2 MIRRORED PAIR
F	F - BACK SLEEVE FABRIC: CUT 2 LINING: CUT 2 MIRRORED PAIR
G	G - BACK NECK FACING FABRIC: CUT 1 ON FOLD
H	H - BACK FABRIC: CUT 1 LINING: CUT 1 ON FOLD
I	I - POCKET FLAP FABRIC: CUT 2
J	J - POCKET FABRIC: CUT 2



3/8" SA'S FOR NECKLINE
AND CENTER FRONT

A1

PATTERNS

BY

mood

DESIGNER FABRICS

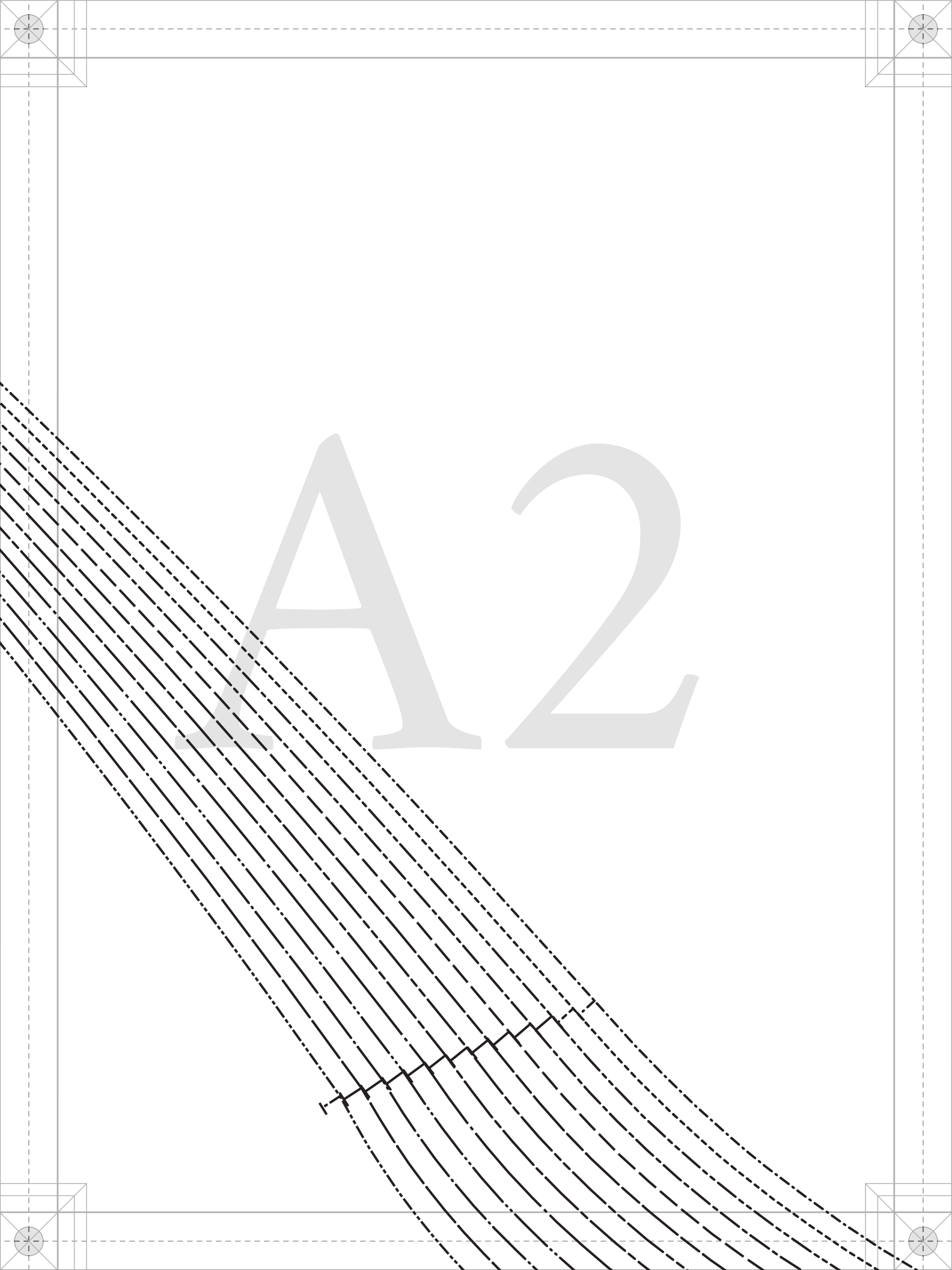
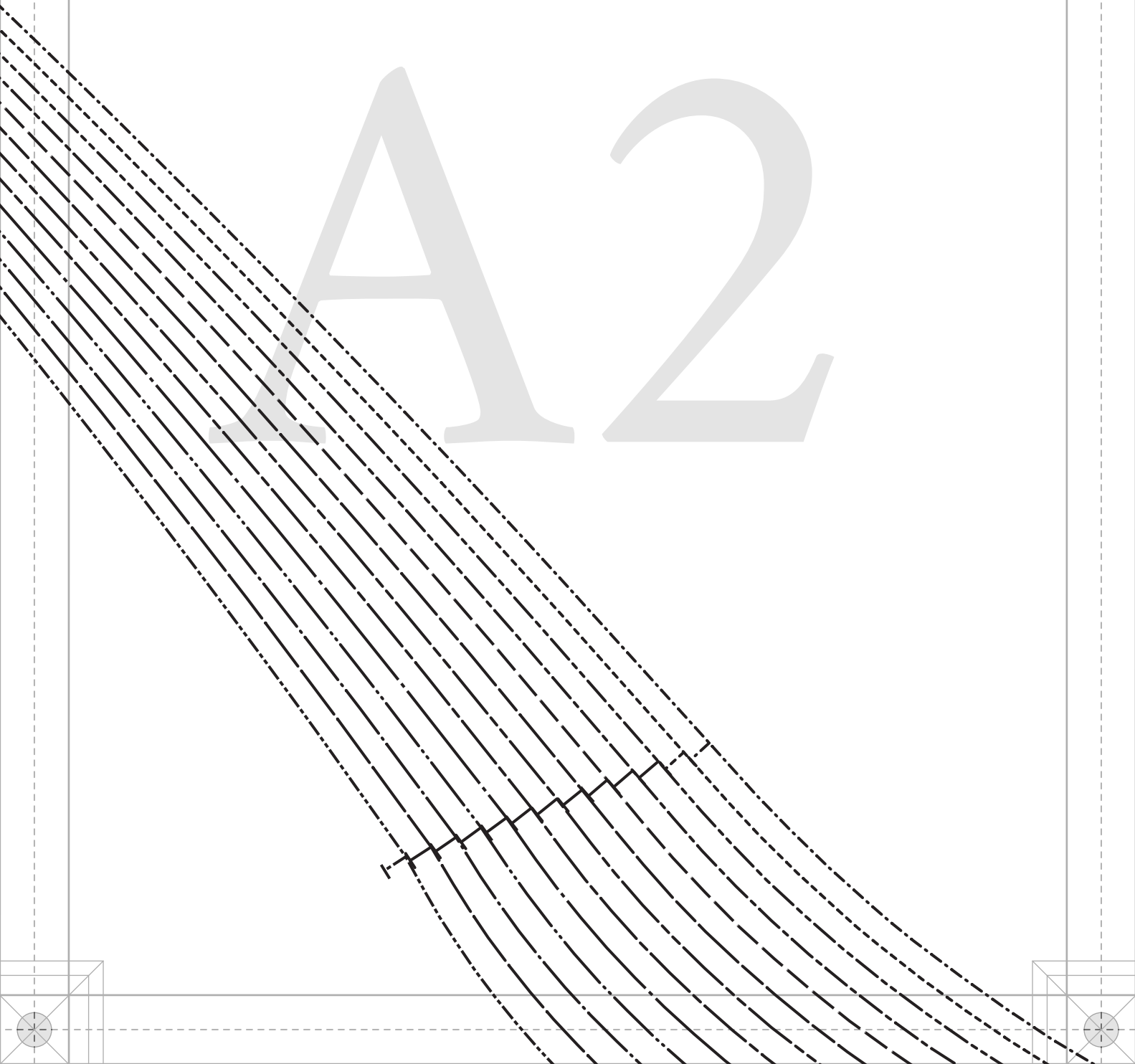
MDF304

#MoodCoryPattern



"The Girl in the..."

A2





3/8" SA FOR NECKLINE AND EDGES

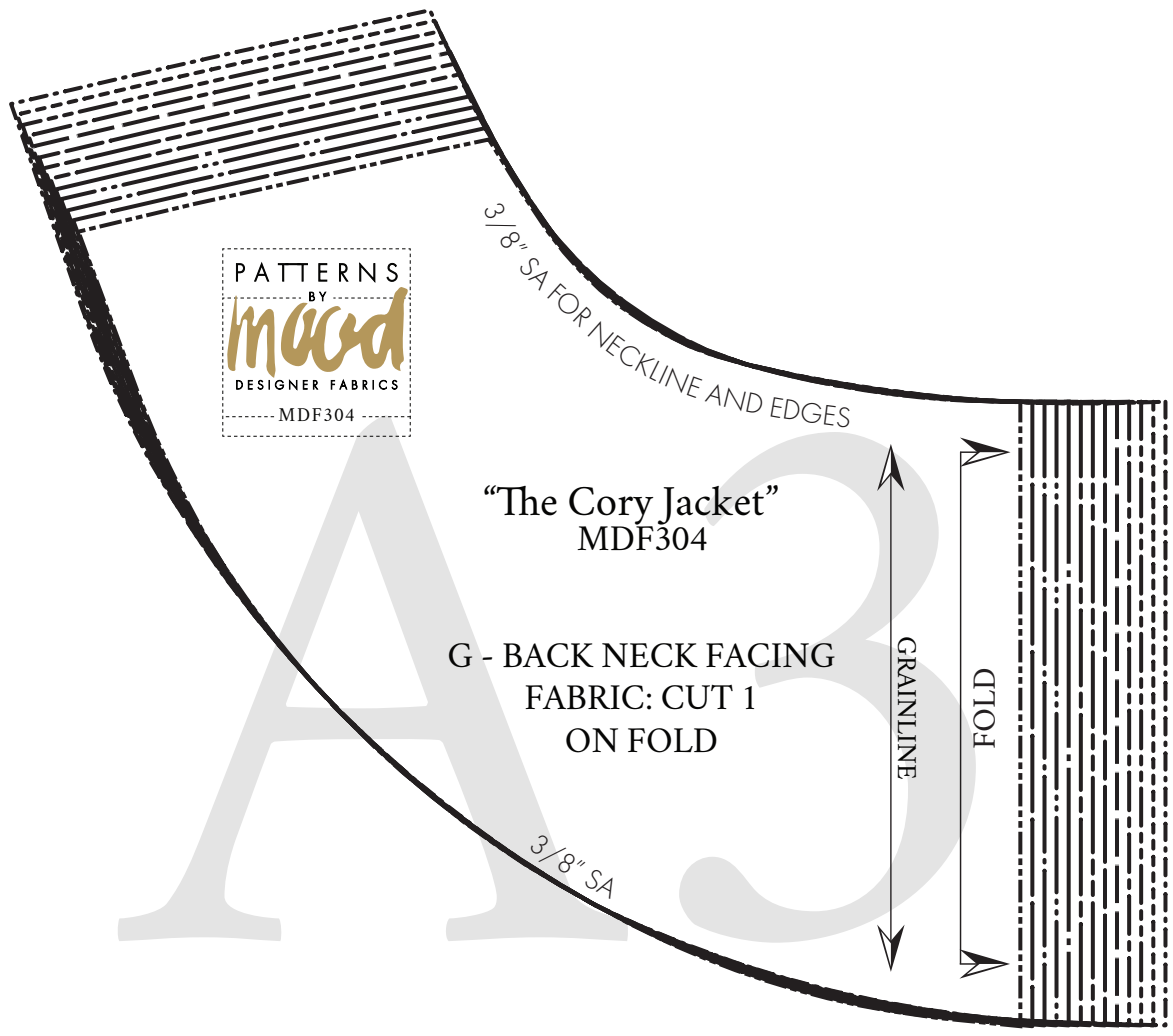
"The Cory Jacket"
MDF304

G - BACK NECK FACING
FABRIC: CUT 1
ON FOLD

GRAINLINE

FOLD

3/8" SA



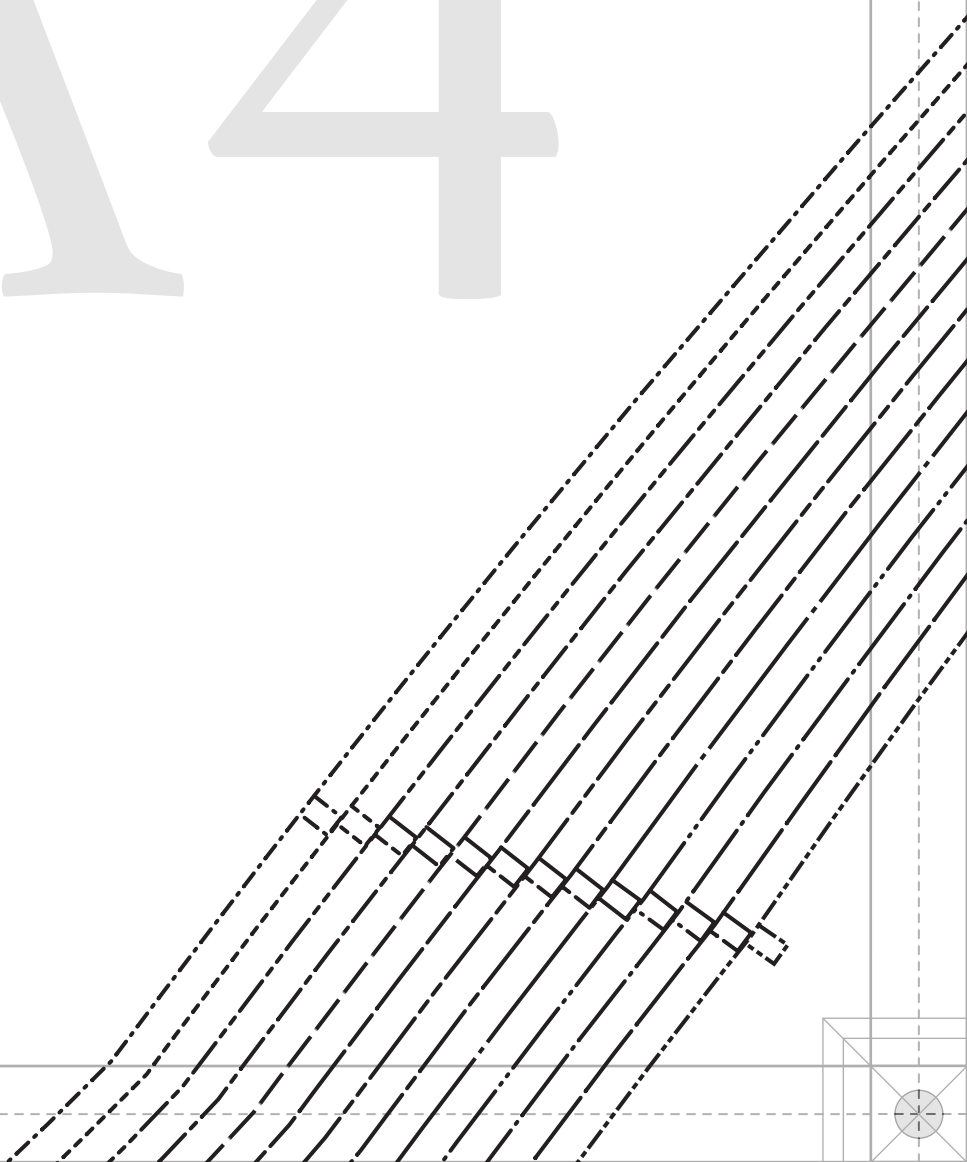
FOR SEWING INSTRUCTIONS:

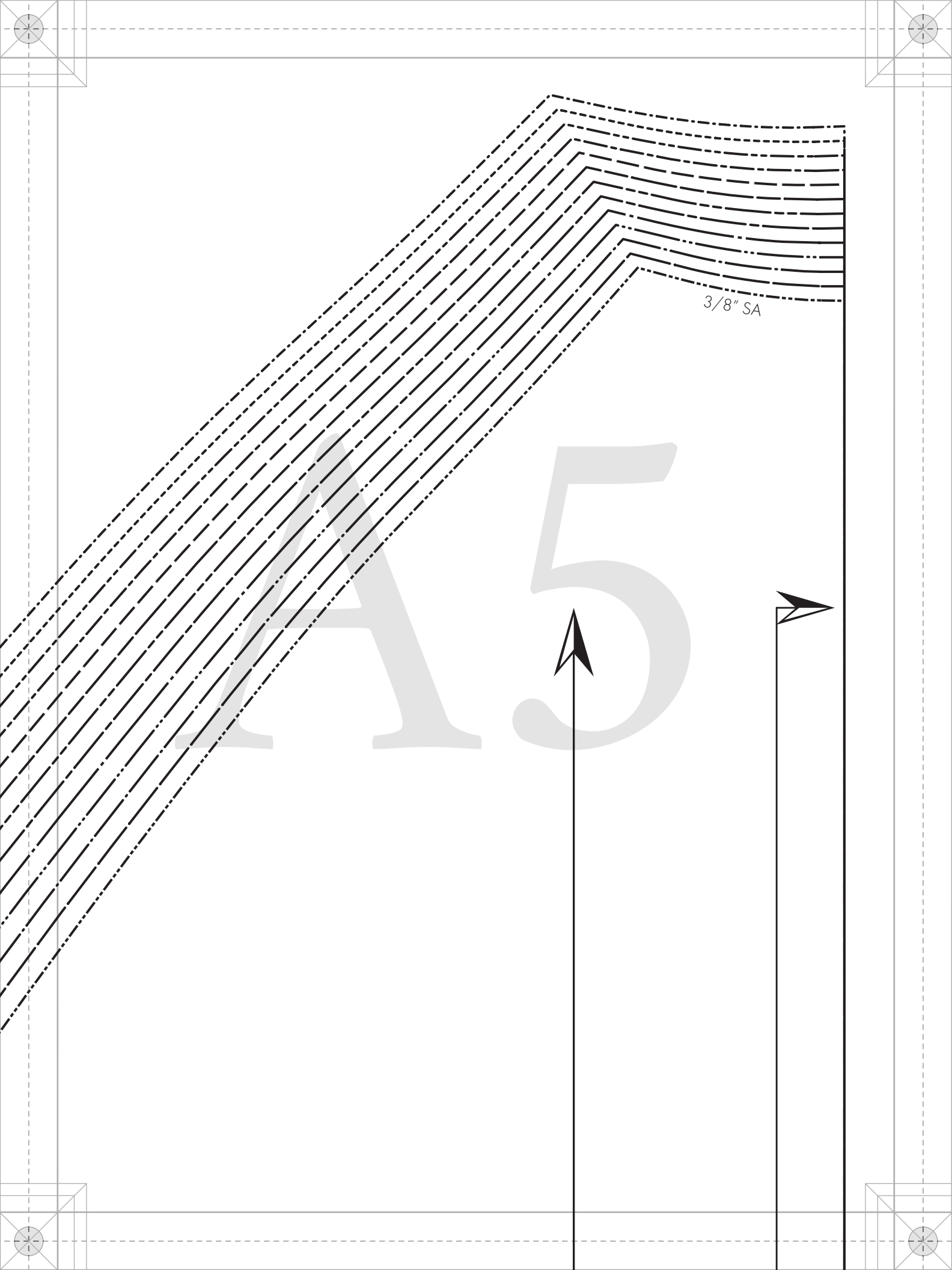
Scan the QR code or visit
MoodSewciety.com and search
"MDF304"



1/2" seam allowances (SA's) included
unless stated otherwise.

A4





3/8" SA

A5

“The Cory Jacket” MDF304

D - FRONT
FABRIC: CUT 2
LINING: CUT 2
MIRRORED PAIR

B 1

GRAINLINE

ALL-GENDER SIZES 32 - 56
1/2" seam allowances (SA's)
included unless stated otherwise.

FLAP PLACEMENT

POCKET PLACEMENT

Line Key All-Gender Sizing

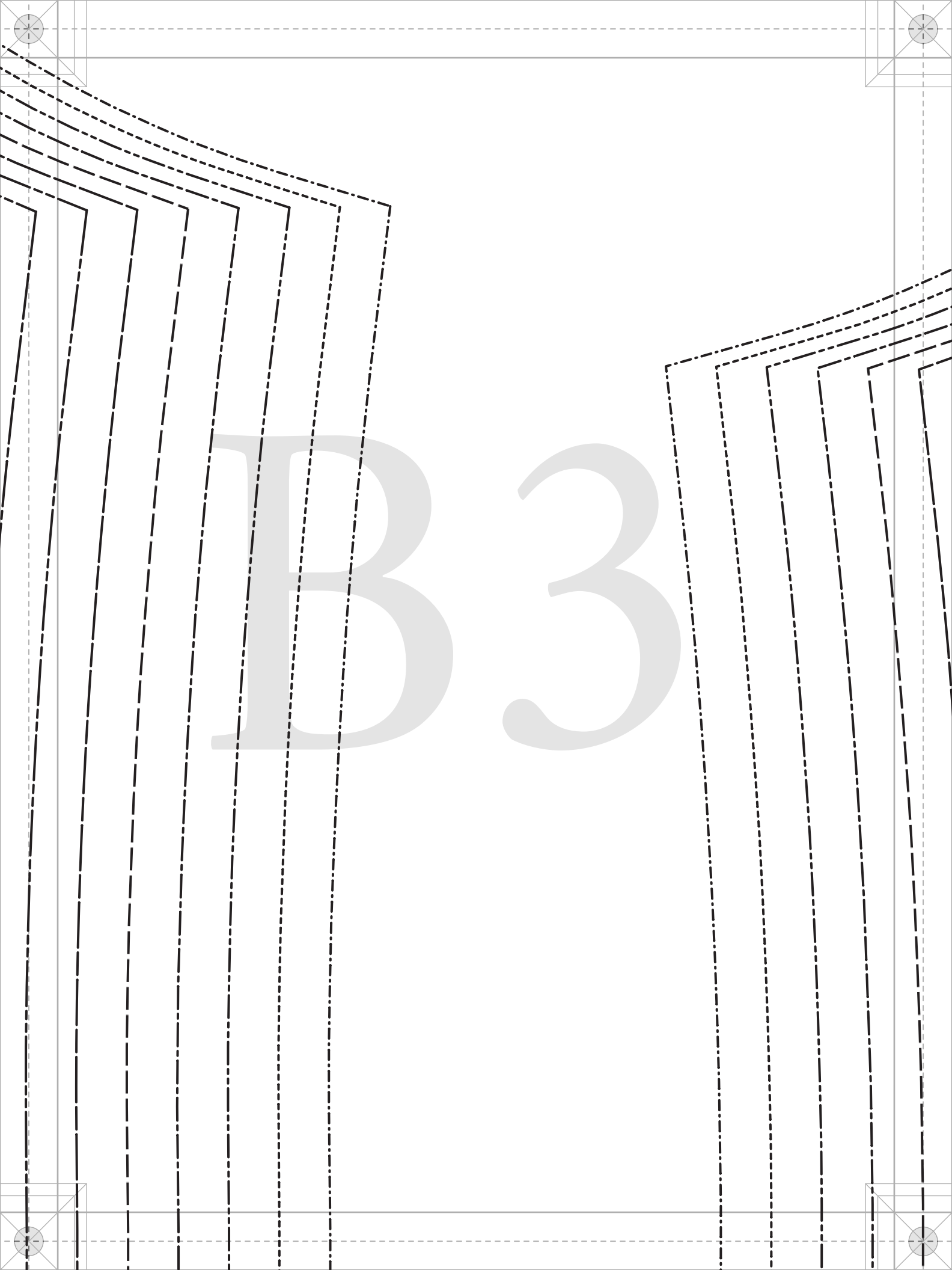
SIZE 32	-----
SIZE 34	_____
SIZE 36	_____
SIZE 38	-----
SIZE 40	_____
SIZE 42	-----
SIZE 44	_____
SIZE 46	_____
SIZE 48	_____
SIZE 50	-----
SIZE 52	-----
SIZE 54	-----
SIZE 56	-----

mood SEWCİETY

IN COLLABORATION WITH

PaTternHack.com







PATTERN

BY

Mood

DESIGNER FABRIC

MDF304

B4

#MoodCoryPa

“The Cory Ja
MDF304

H - BACK

FABRIC: CU

LINING: CU

ON FOL

P R N S

ed

FABRICS

304

yPattern

Jacket"

304

ACK

CUT 1

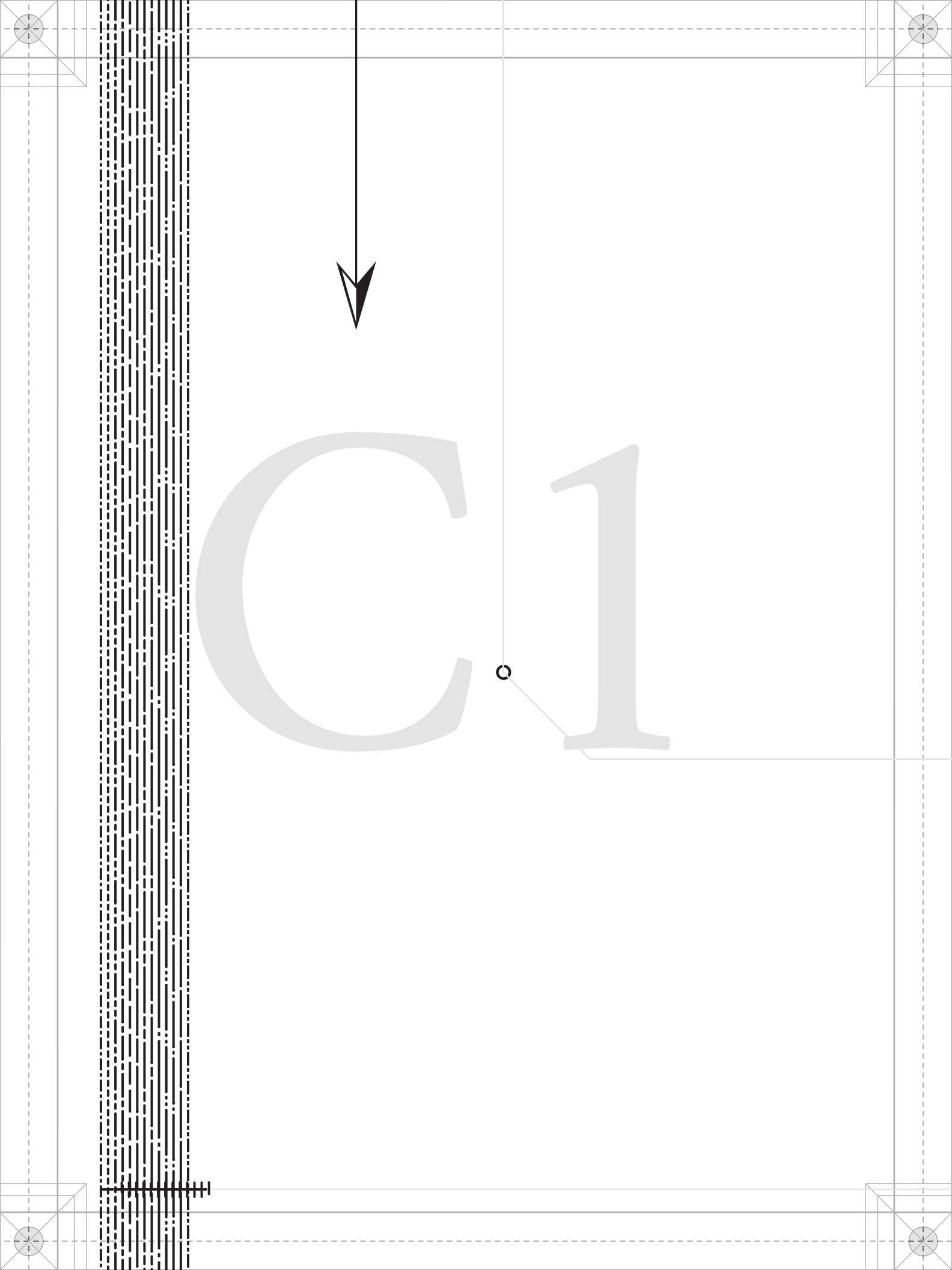
CUT 1

OLD

B5

GRAINLINE

PLACE ON FOLD OF FABRIC



C 1

C 2

C 3

ALL-GENDER SIZES
1/2" seam allowance
included unless stated

C4

Line Key
All-Gender Sizing

SIZE 32

SIZE 34

SIZE 36

SIZE 38

SIZE 40

SIZE 42

SIZE 44

SIZE 46

SIZE 48

SIZE 50

SIZE 52

SIZE 54

SIZE 56

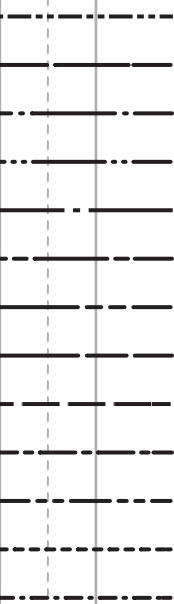
mood SEWCITY

IN COLLABORATION WITH

PaTternHack.co

SIZES 32 - 56
Swashes (SA's)
stated otherwise.

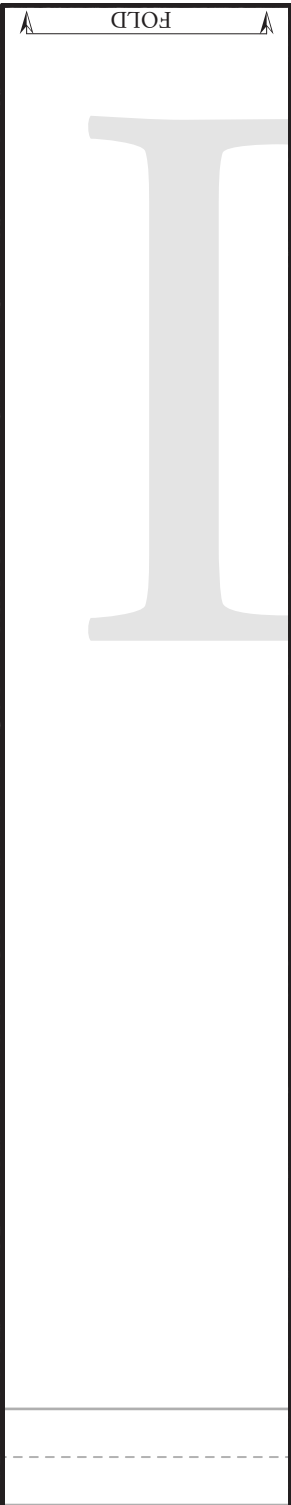
Key
Sizing



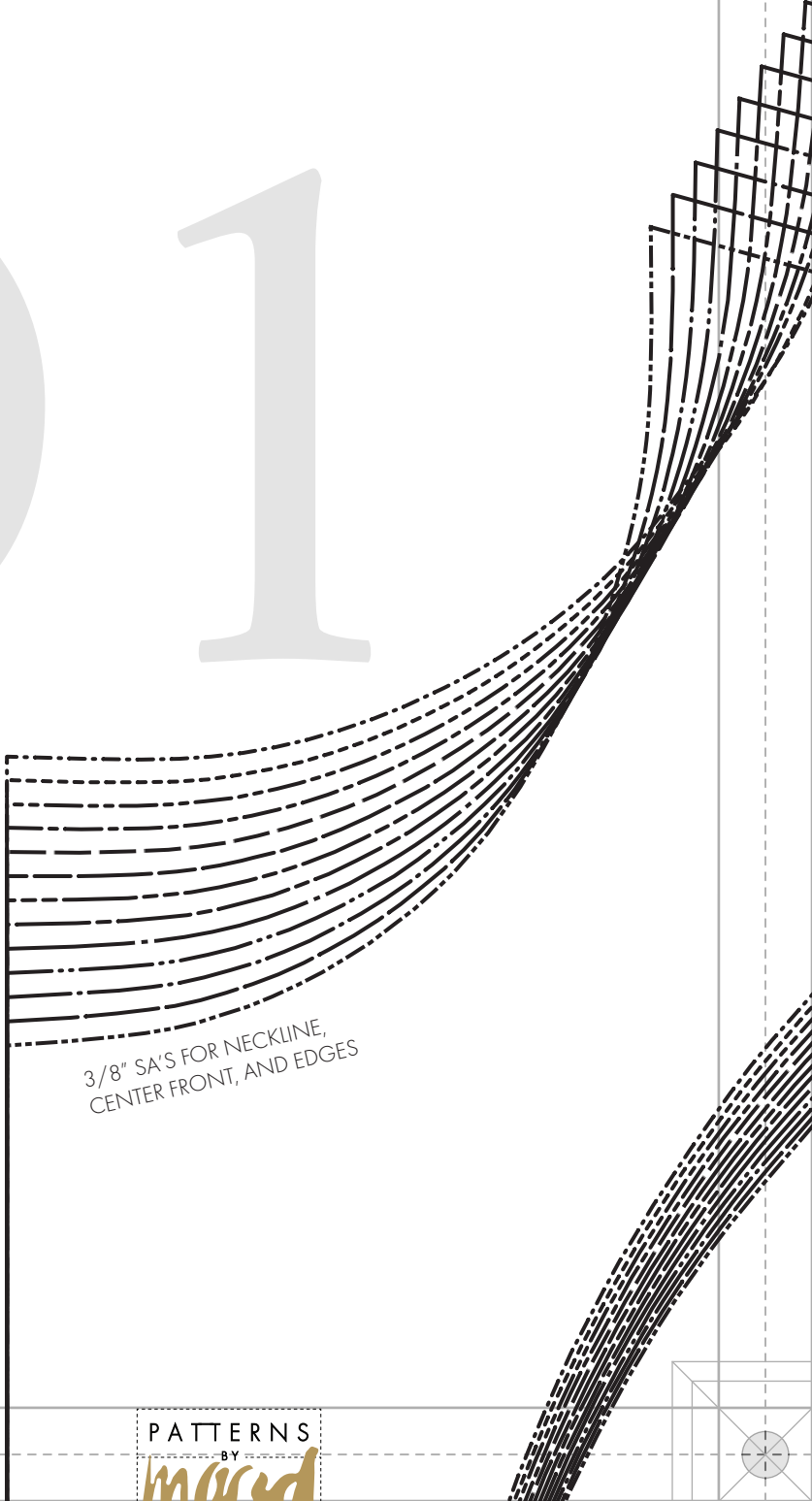
C5



OCIETY
ON WITH
lack.com



D 1

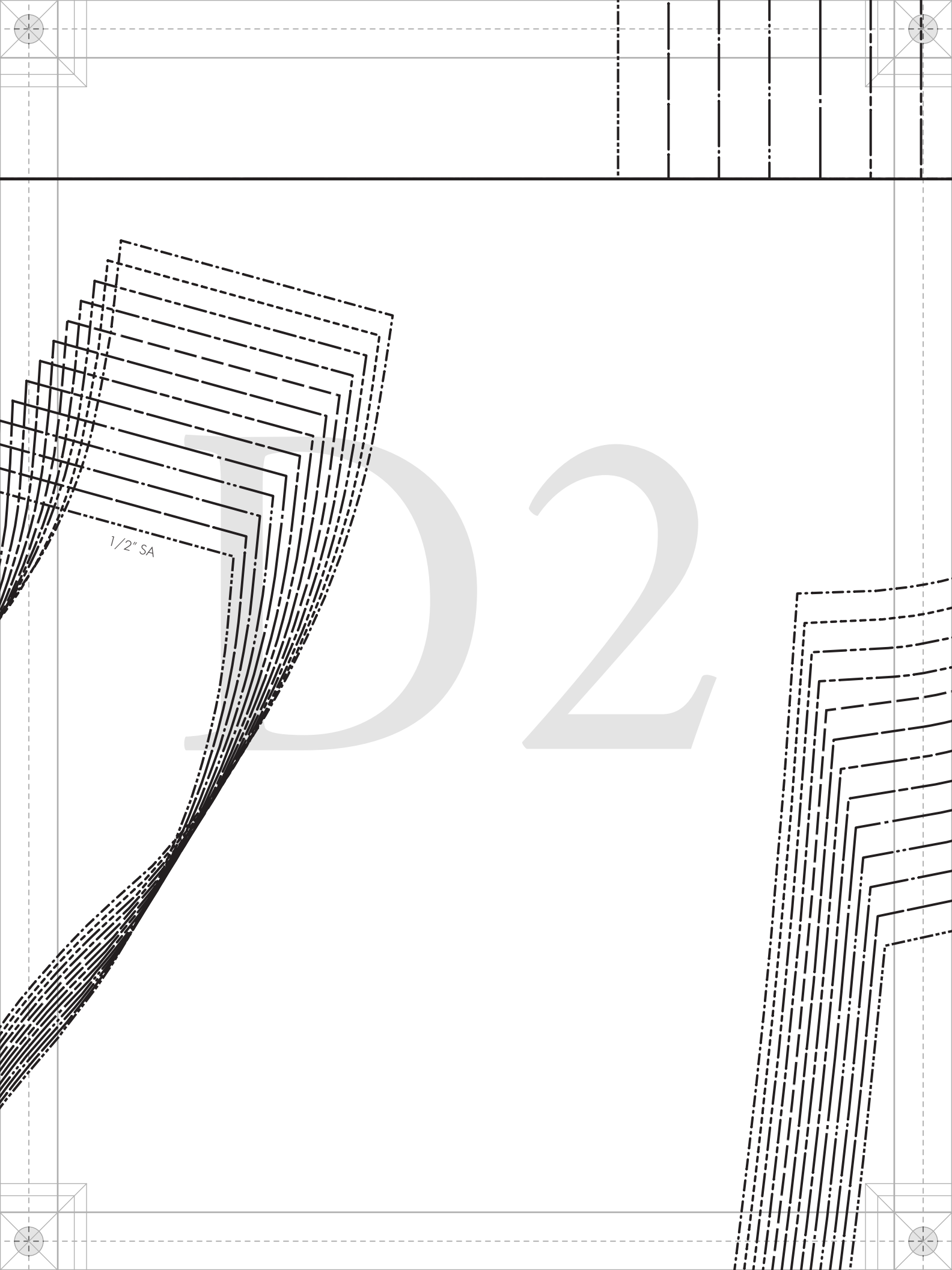


3/8" SA'S FOR NECKLINE,
CENTER FRONT, AND EDGES

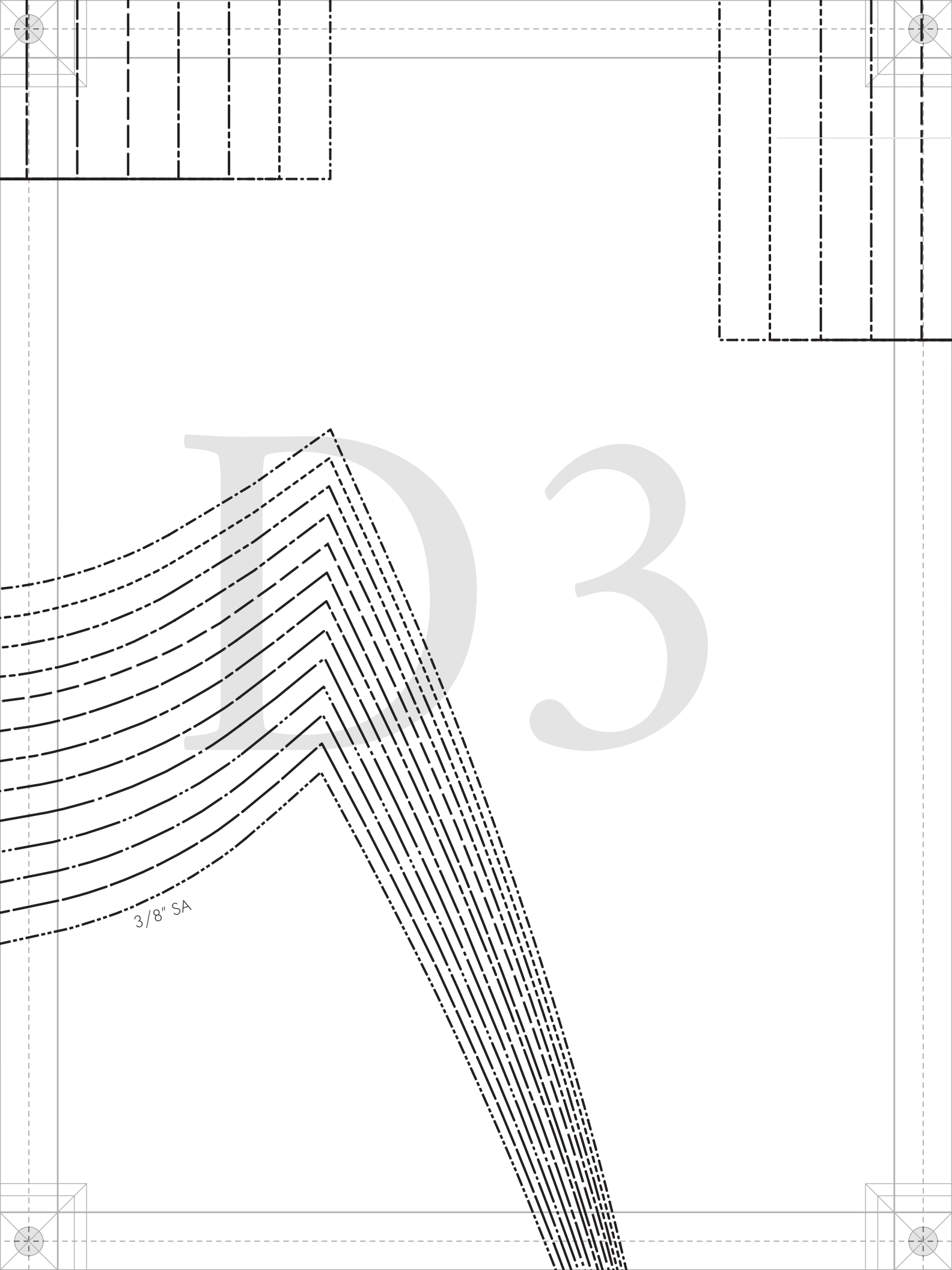
PATTERNS

BY

mae



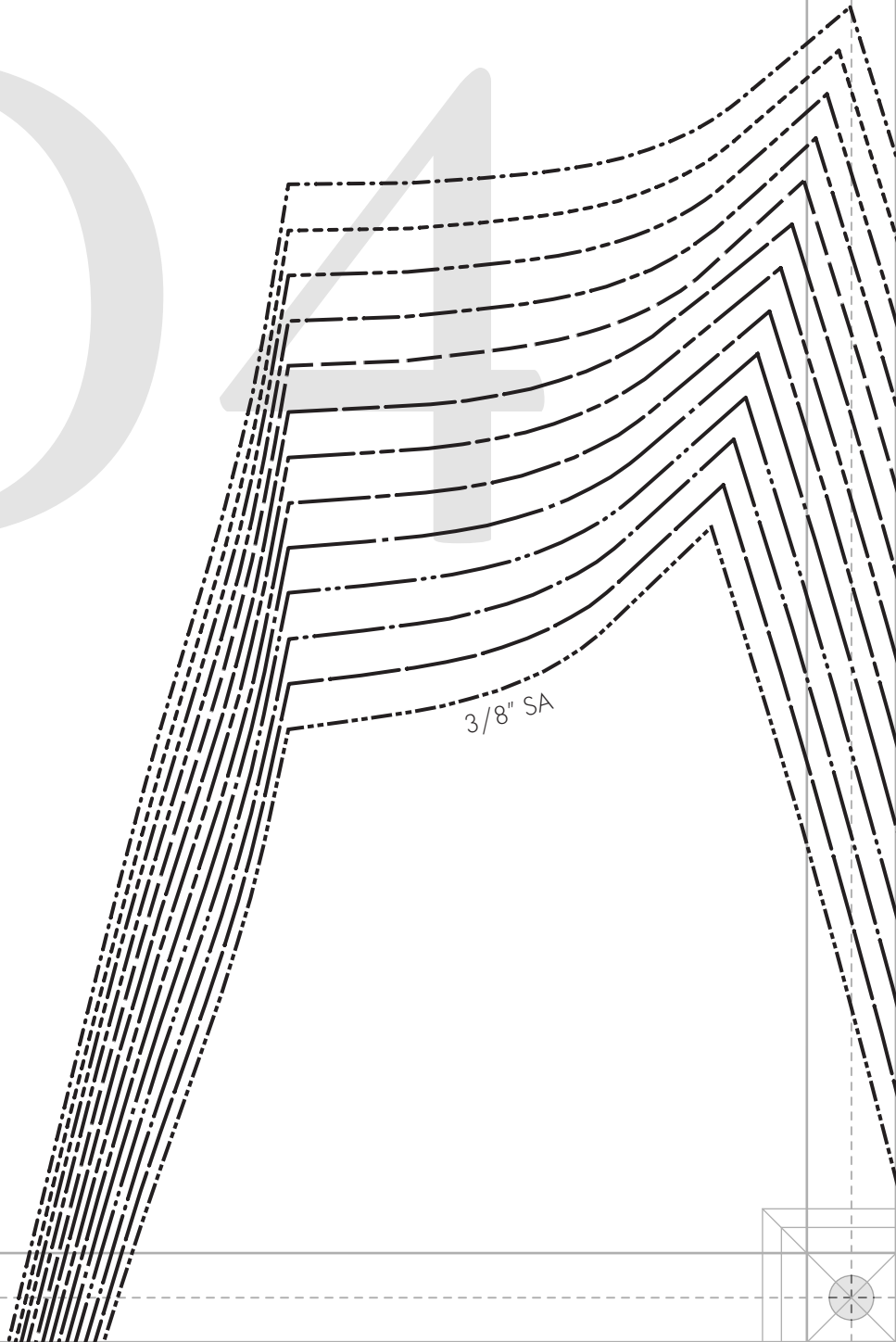
1/2" SA



3/8" SA

D

4



3/8" SA

D5

PATTERNS

BY

mood

DESIGNER FABRICS

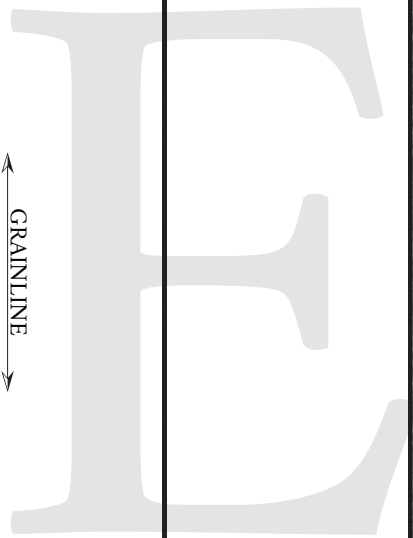
MDF304

#MoodCoryPattern

“The Cory Jacket”
MDF304

C - FRONT FACING
FABRIC: CUT 2
MIRRORED PAIR

ALL-GENDER SIZES 32 - 56
1/2" seam allowances (SA's)
included unless stated otherwise.



E2

P A



DES

#Mood

“The C
M

E - FRO

FAB

LIN

MIRR

PATTERNS
BY
mood
DESIGNER FABRICS
- MDF304 -

MoodCoryPattern

“The Cory Jacket”
MDF304

FRONT SLEEVE
FABRIC: CUT 2
LINING: CUT 2
MIRRORED PAIR

EE3



IE4



PATTERN

BY

Mood

DESIGNER FABRIC

MDF304

#MoodCoryPa

“The Cory Ja
MDF304

ERNS

Y
od

FABRICS

F304

ryPattern

y Jacket”
F304

15





“The Cory Jacket”
MDF304

B - DRAWSTRING
FABRIC: CUT 1
ON FOLD
OR CUT 2

GRAINLINE



PLEASE SEE THE TUTORIAL FOR SACS FOR

ALL-GEN
1/2" sec
included u

FD

- ALL-
- SIZE 3
- SIZE 3
- SIZE 3
- SIZE 3
- SIZE 4
- SIZE 4
- SIZE 4
- SIZE 4
- SIZE 4
- SIZE 4
- SIZE 5
- SIZE 5
- SIZE 5
- SIZE 5

m
Pa

L-GENDER SIZES 32 - 56
2" seam allowances (SA's)
ded unless stated otherwise.

GRAINLINE

13

Line Key
All-Gender Sizing

- SIZE 32
- SIZE 34
- SIZE 36
- SIZE 38
- SIZE 40
- SIZE 42
- SIZE 44
- SIZE 46
- SIZE 48
- SIZE 50
- SIZE 52
- SIZE 54
- SIZE 56

mood SEWCÍETY
IN COLLABORATION WITH
PaTternHack.COM

F - BACK SL
FABRIC: CU
LINING: CU
MIRRORED

ALL-GENDER SIZE
1/2" seam allowan
included unless stated

E4
GRAINLINE

Line Key
All-Gender Size

SIZE 32

SIZE 34

SIZE 36

SIZE 38

SIZE 40

SIZE 42

SIZE 44

SIZE 46

SIZE 48

SIZE 50

SIZE 52

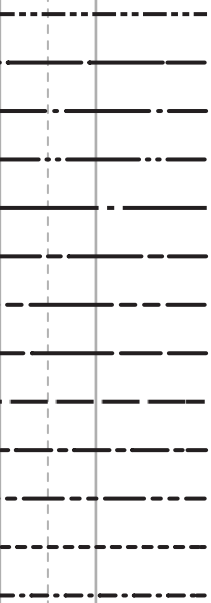
SIZE 54

SIZE 56

SLEEVE
: CUT 2
: CUT 2
ED PAIR

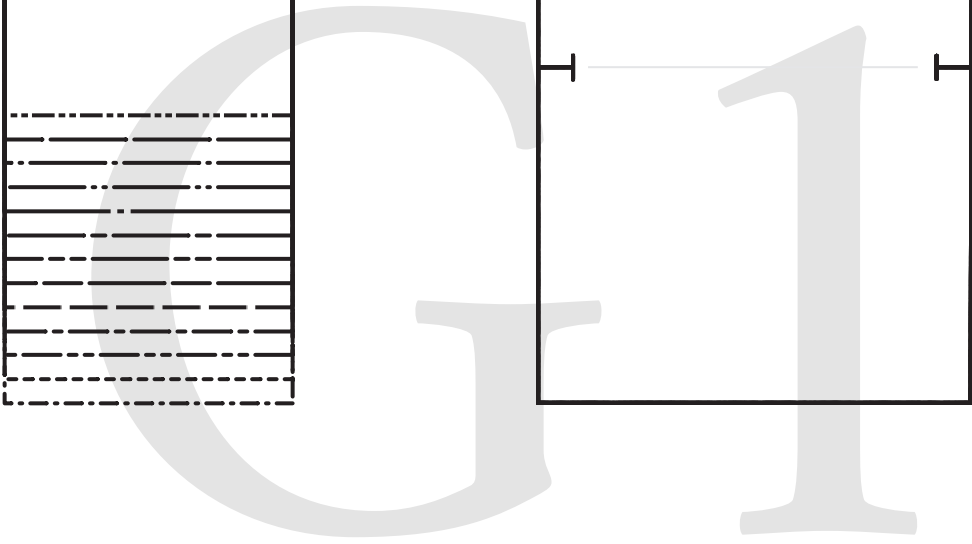
SIZES 32 - 56
owances (SA's)
stated otherwise.

Key
er Sizing

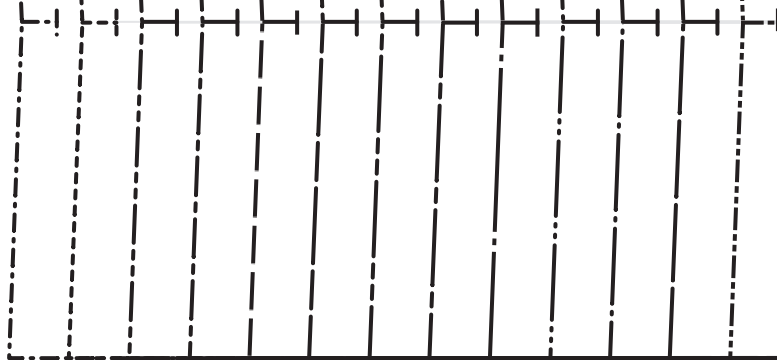


ES5

PLANS FOR THIS PIECE



G Z



G 3



G4



Q5



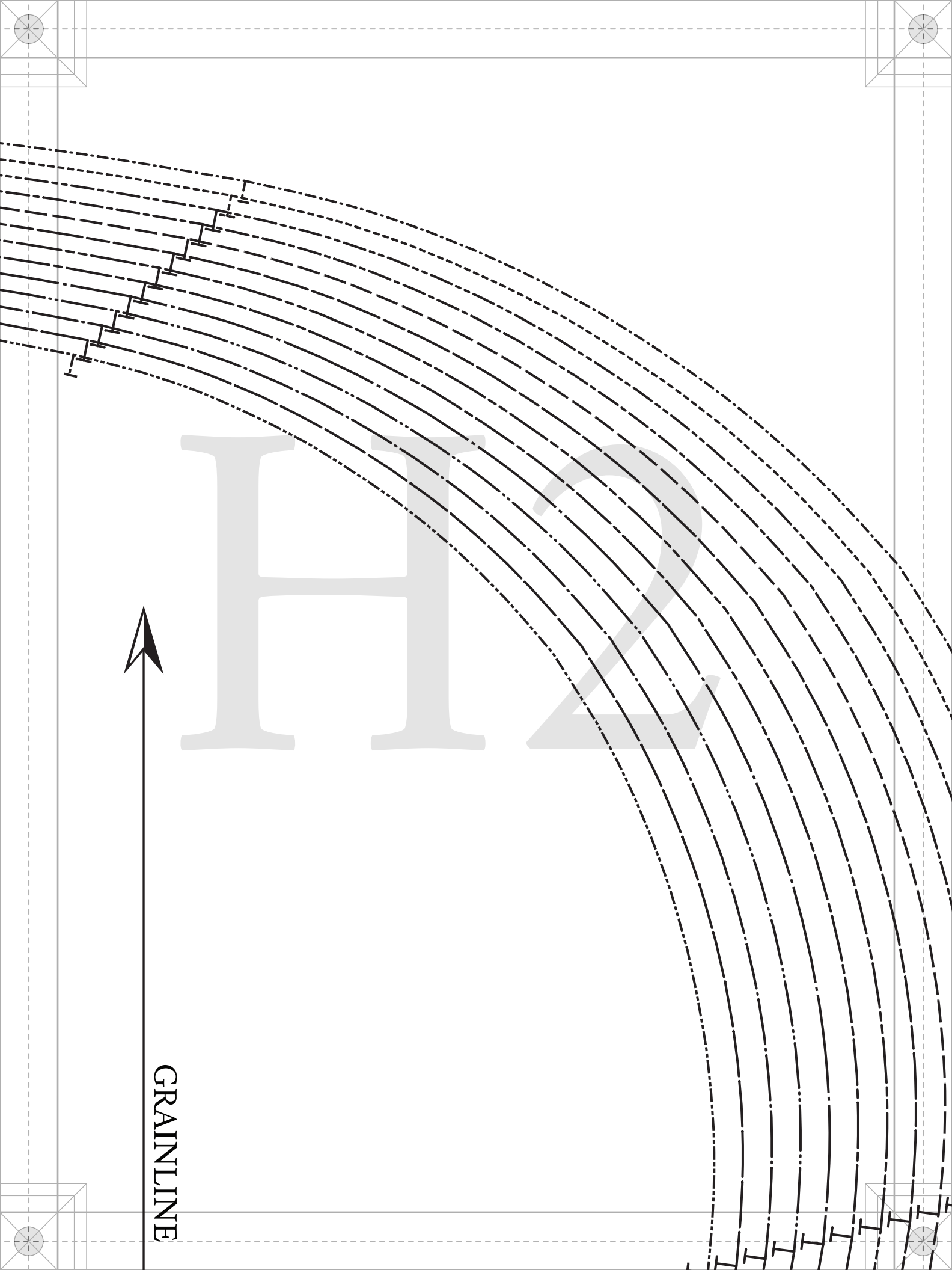
HI 1

PATTERNS
BY
mood
DESIGNER FABRICS
----- MDF304 -----

#MoodCoryPattern

“The Cory Jacket”
MDF304

A - HOOD
FABRIC: CUT 2



GRAINLINE

HP

#MoodCoryPattern

“The Cory Jacket”

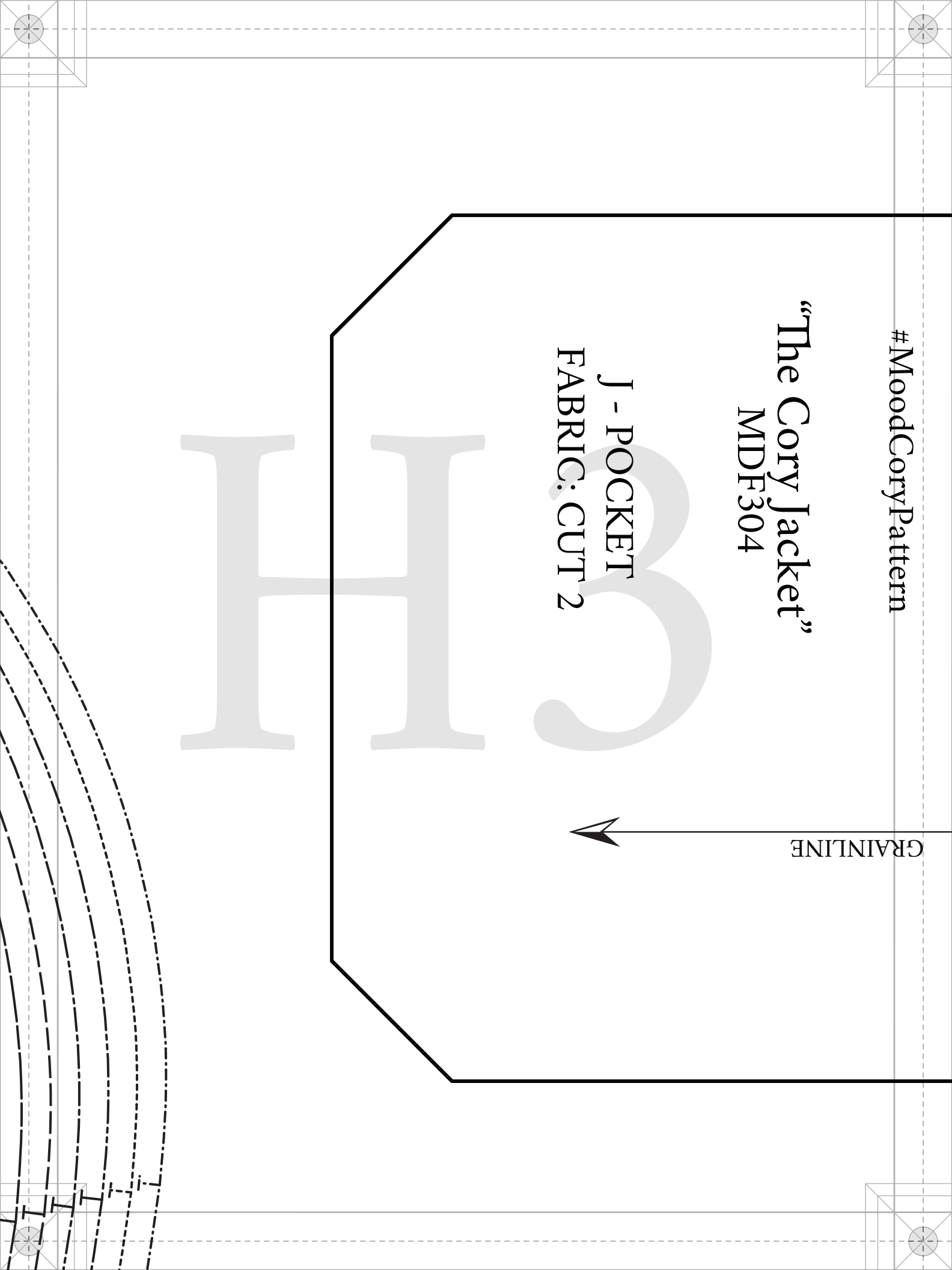
MDF304

J - POCKET
FABRIC: CUT 2

GRAINLINE



BCI



4

11

PATTERNS
BY
Mood
DESIGNER FABRICS
MDF304

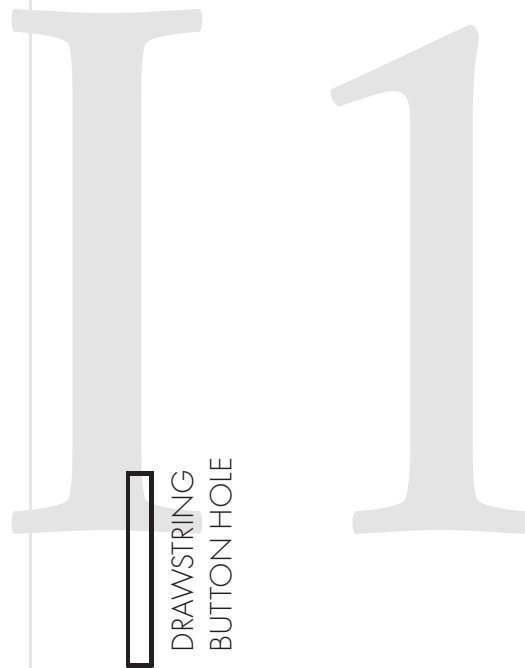


GR

#MoodCorvyPattern

A-HOOD
FABRIC: CUT 2
LINING: CUT 2
MIRRORED PAIR

ALL-GENDER SIZES 32 - 56
1/2" seam allowances (SA's)
included unless stated otherwise.



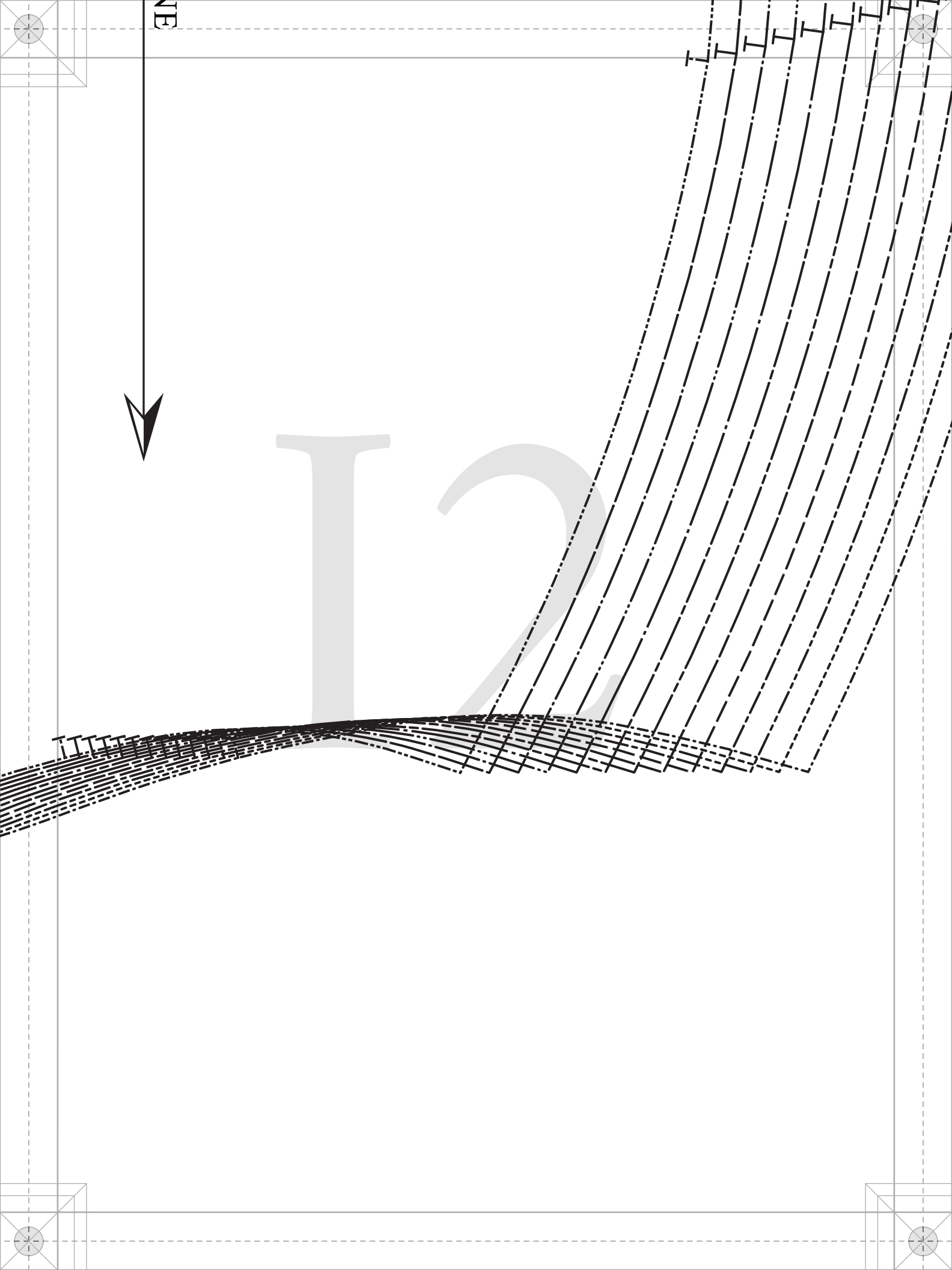
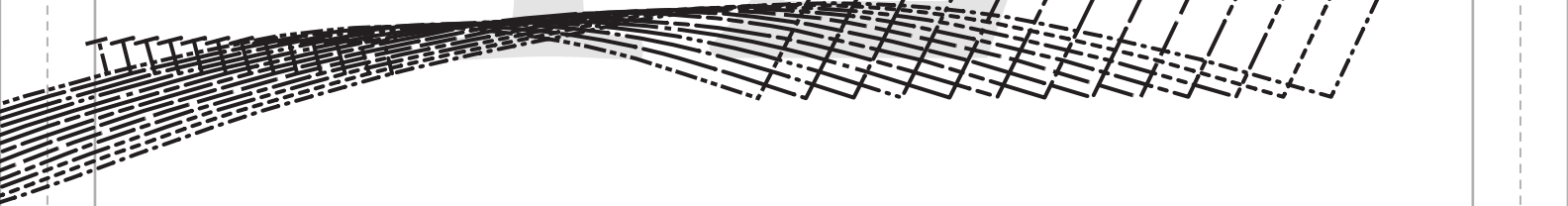
NECKLINE IS 3/8" SA



NE



12



PATTERNS

BY

Mood

DESIGNER FABRICS

MDF304

#MoodCoryPattern

“The Cory Jacket”
MDF304

I - POCKET FLAP
FABRIC: CUT 2

GRAINLINE

