

# Dragon Mask

By Paintyee

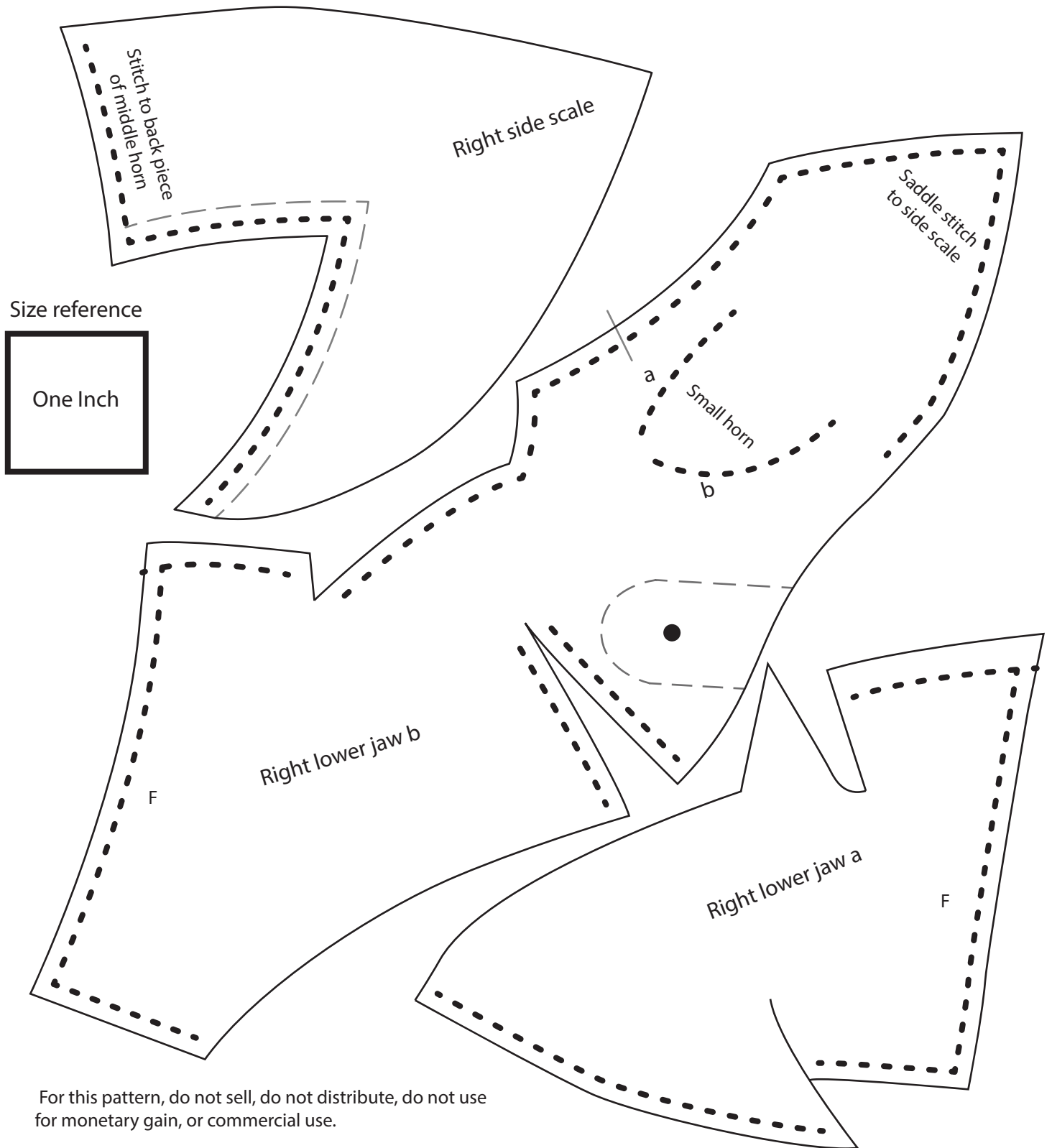
Instagram: Paintyee

Instruction video on  
youtube under Paintyee

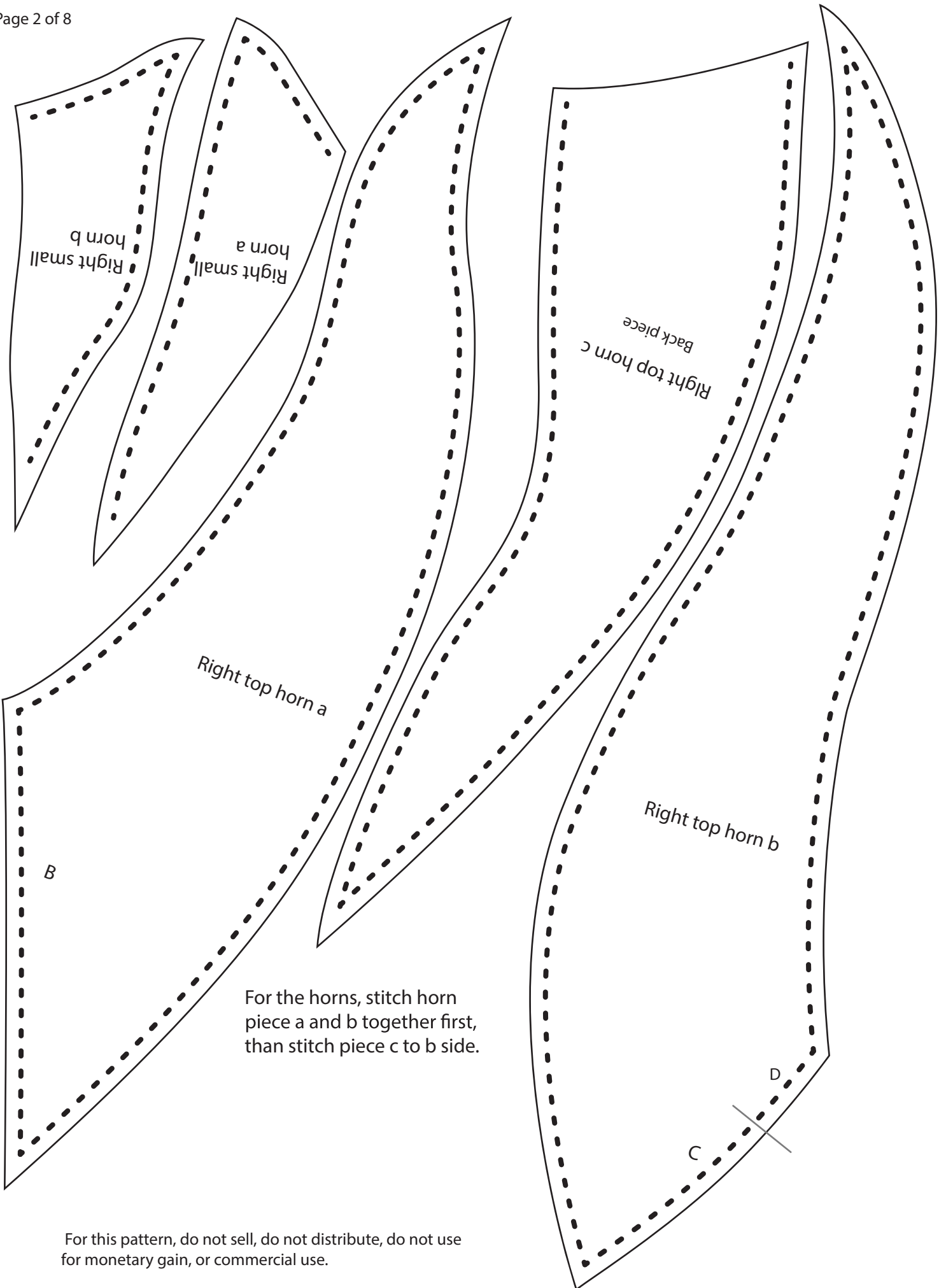
Materials needed for this project:

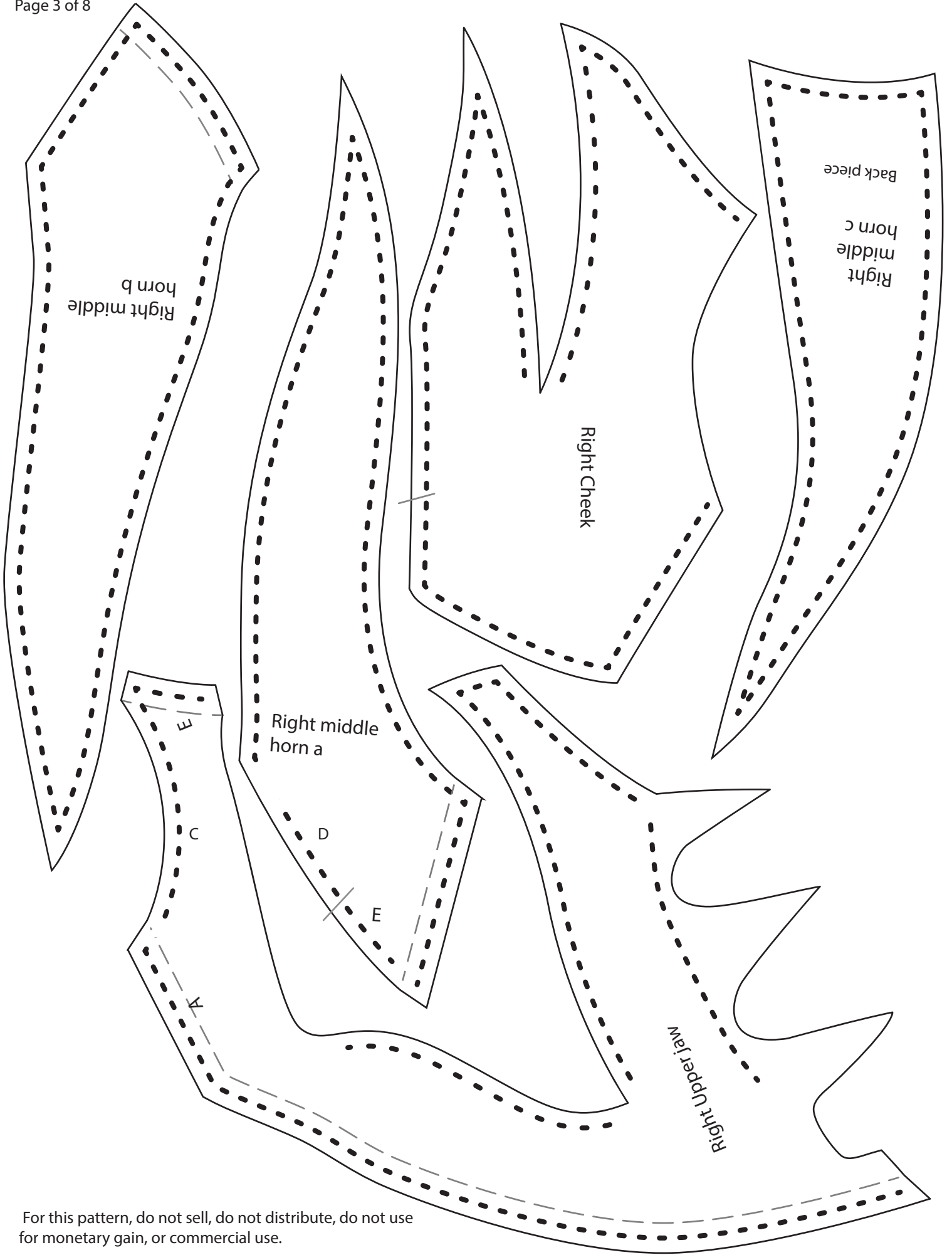
- 3/4 inch buckles 3
- 5-6 oz leather  
(preferably on the stiffer side).
- 9 mm rivets 10
- 0.8mm thread

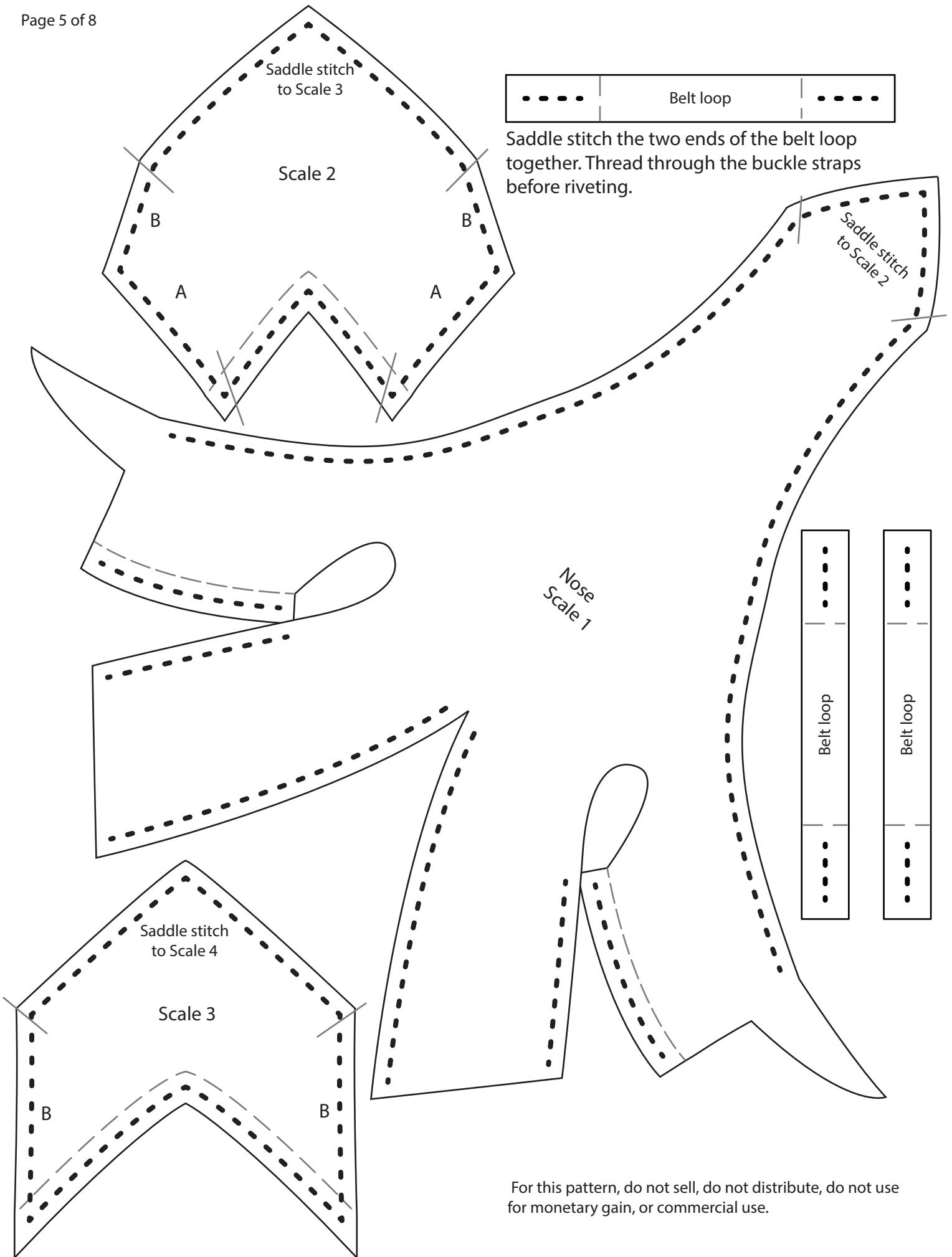
- Cut
- - - - - Stitch
- - - - - Align
- Punch



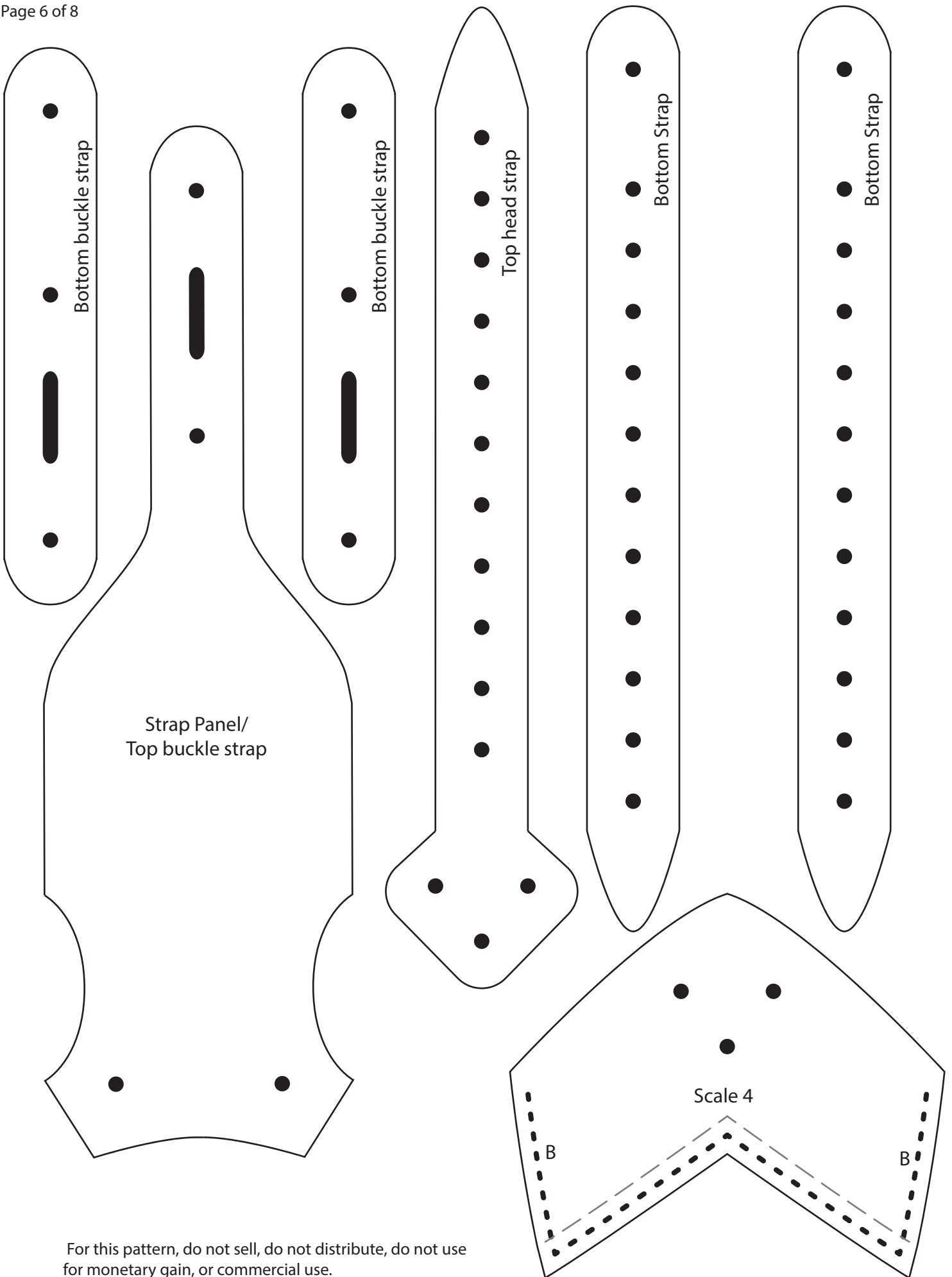
For this pattern, do not sell, do not distribute, do not use for monetary gain, or commercial use.



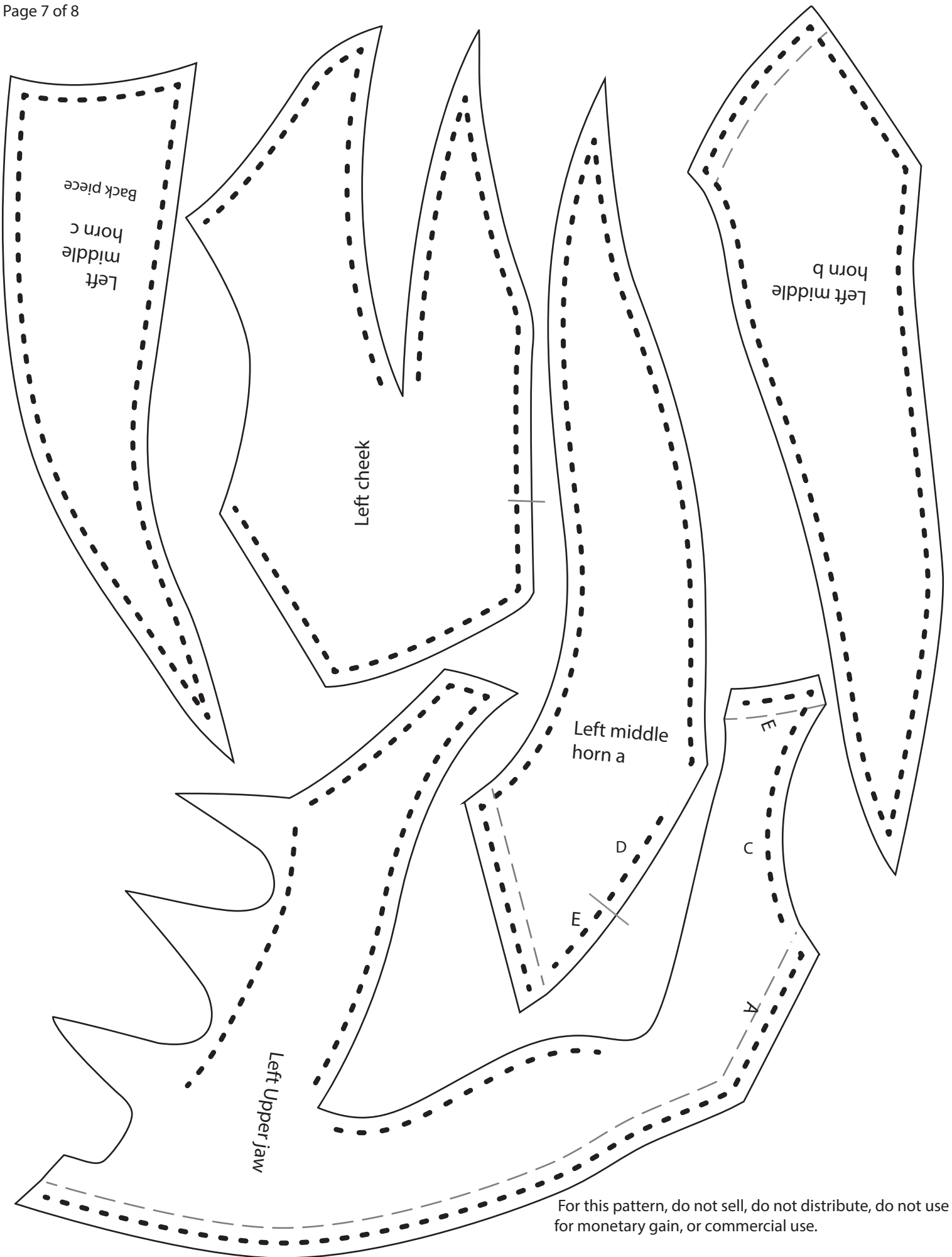




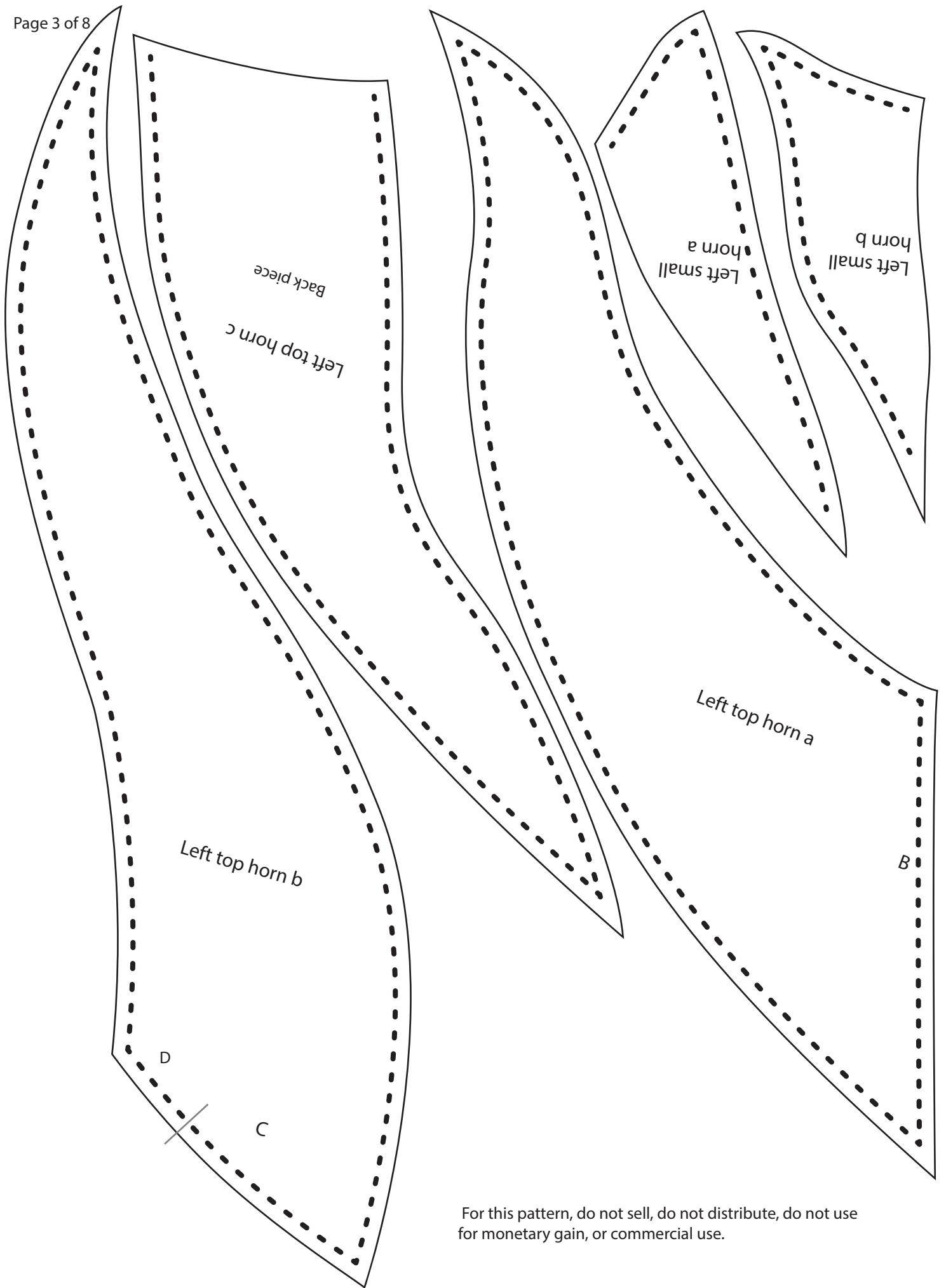
For this pattern, do not sell, do not distribute, do not use for monetary gain, or commercial use.



For this pattern, do not sell, do not distribute, do not use for monetary gain, or commercial use.



For this pattern, do not sell, do not distribute, do not use for monetary gain, or commercial use.



For this pattern, do not sell, do not distribute, do not use for monetary gain, or commercial use.

