

[Video tutorial](#)

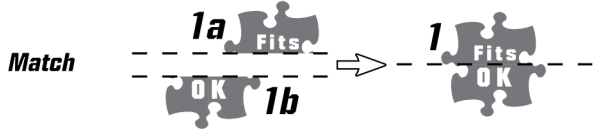
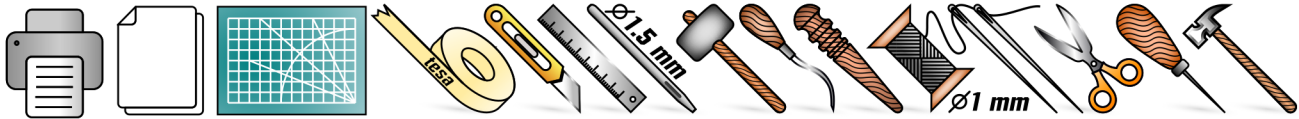
[Facebook community](#)

[Website](#)

[Etsy patterns shop](#)

[Instagram](#)

Mannequin head pattern



5-10 oz
(2-4 mm),
.7 sq ft
(.06 sq m)
per
page

Punch



Cut

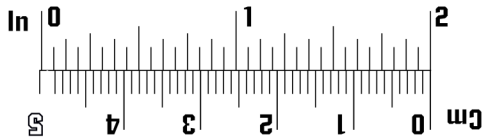


- * **Print on any type of paper selecting *US Letter* as the printing format.**
- * **Measure your head from the back to the forehead to find out your own size.**
- * **You might want to print one size lower for your headware to fit the mannequin better.**

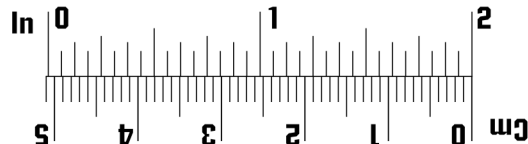
**Print at 100% scale for approximately
630 mm in head circumference or *US size 7 7/8*
and measure the ruler from below for accuracy.
For other sizes please consult the remaining options.**



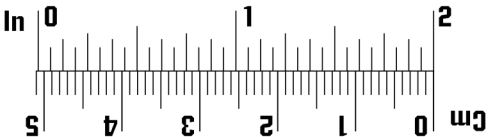
Print at 98.4% for 620 mm or *US size 7 3/4*



Print at 90.3% for 570 mm or *US size 7 1/8*



Print at 96.8% for 610 mm or *US size 7 5/8*



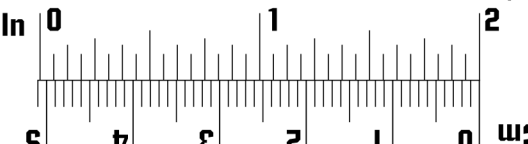
Print at 88.7% for 560 mm or *US size 7*



Print at 95.2% for 600 mm or *US size 7 1/2*



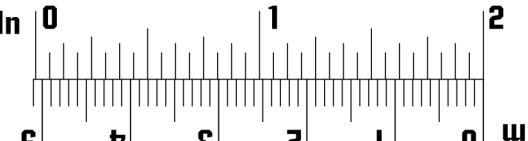
Print at 87% for 550 mm or *US size 6 7/8*



Print at 93.5% for 590 mm or *US size 7 3/8*



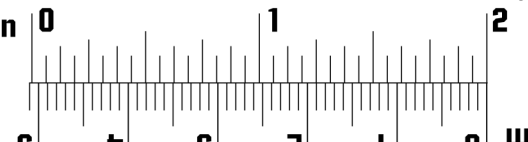
Print at 85.5% for 540 mm or *US size 6 3/4*



Print at 91.9% for 580 mm or *US size 7 1/4*



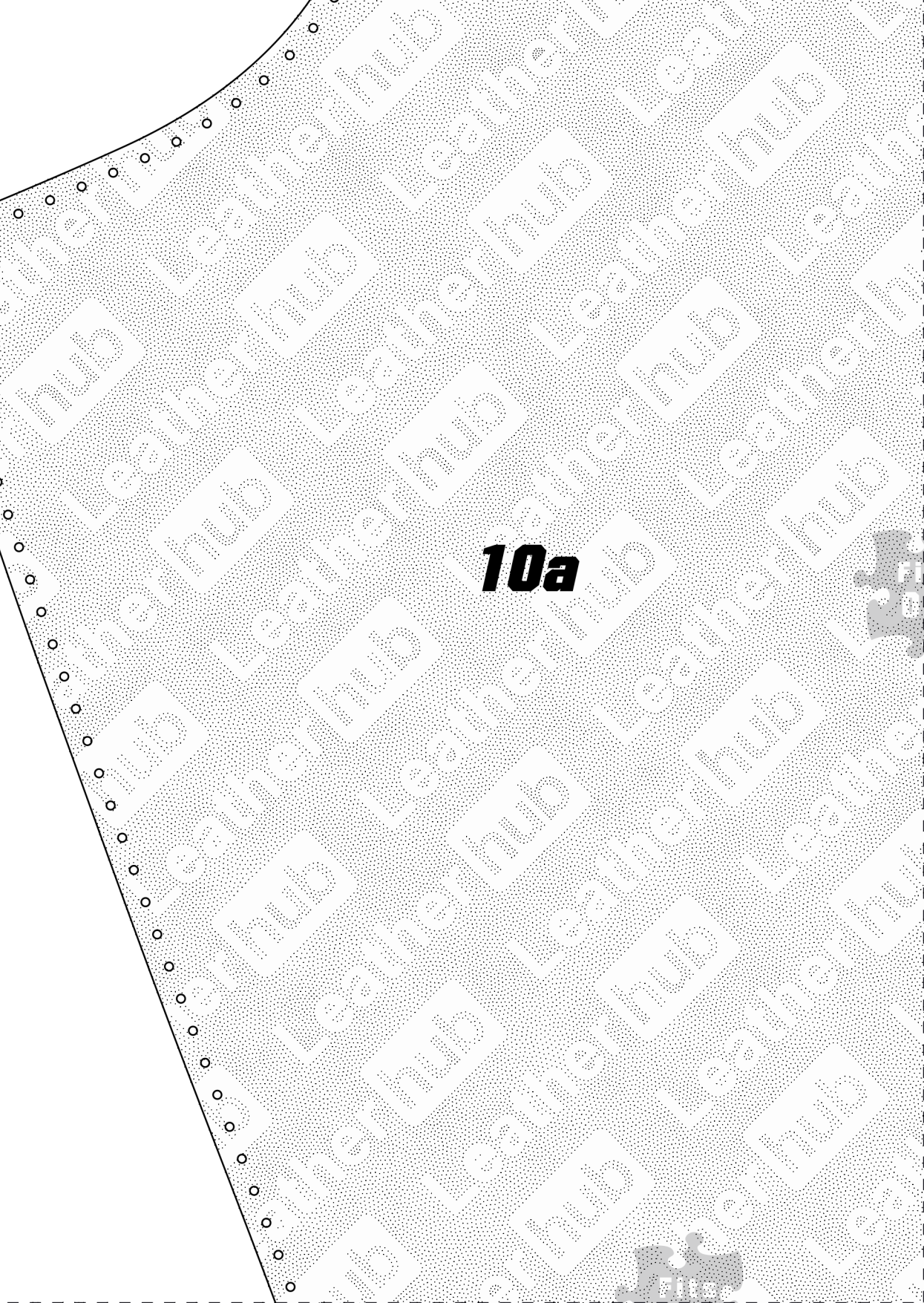
Print at 84.1% for 530 mm or *US size 6 5/8*



Center

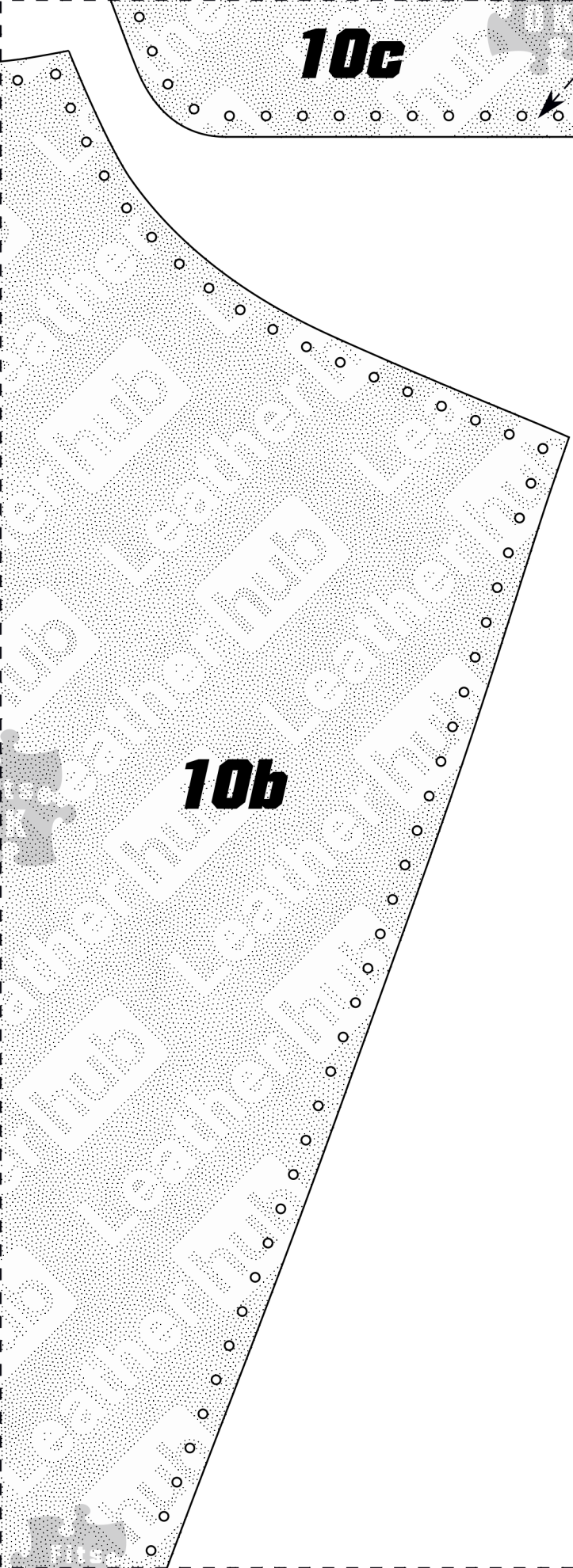


10a



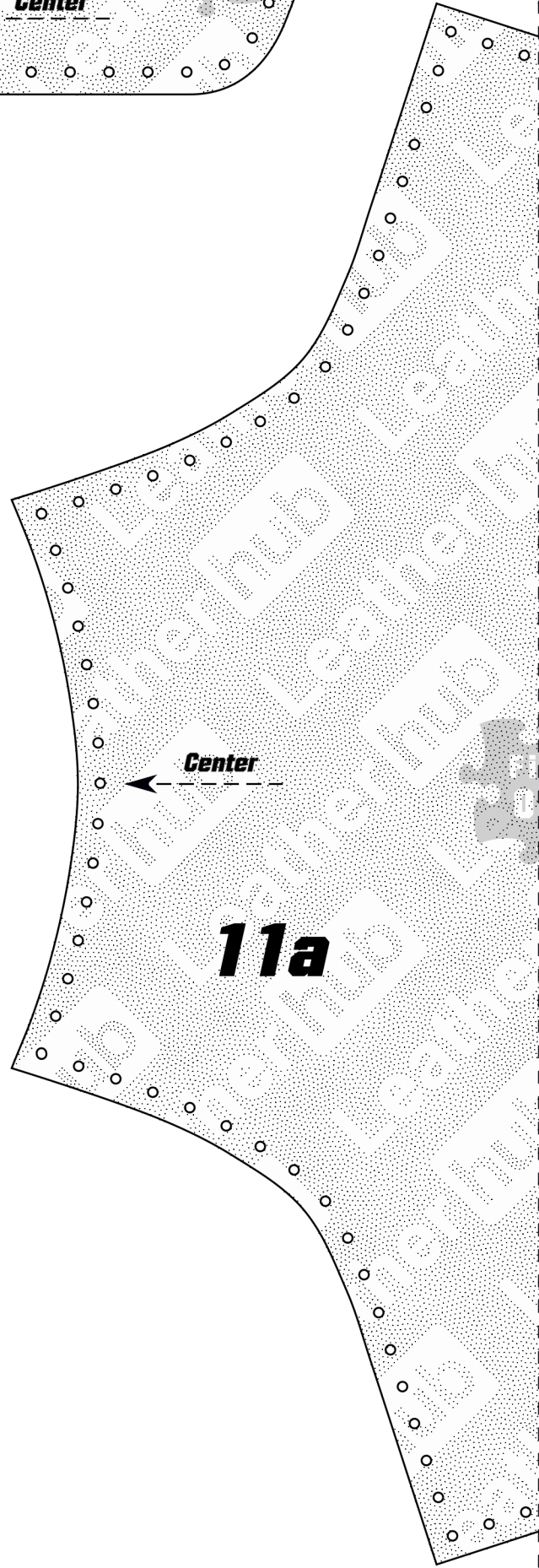
10c

Center



10b

Center



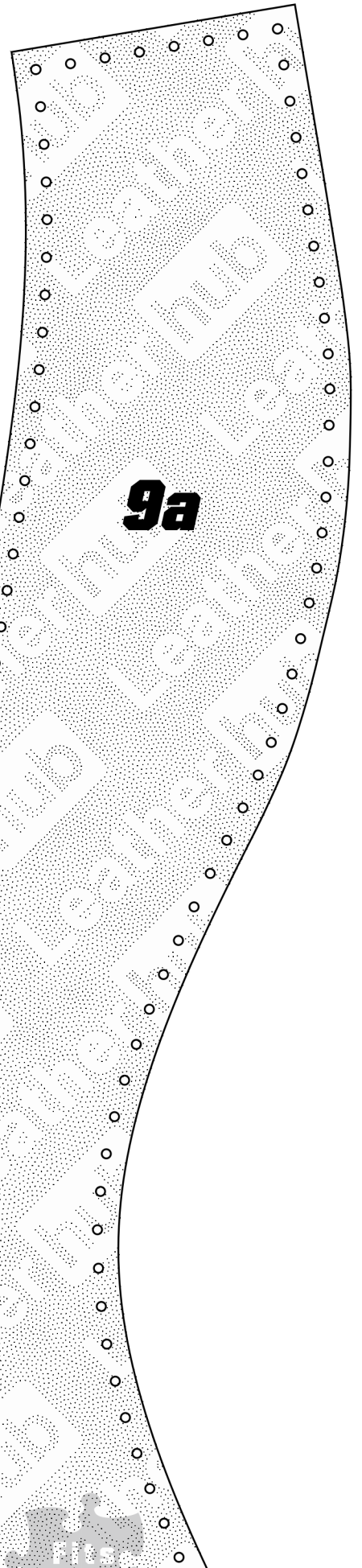
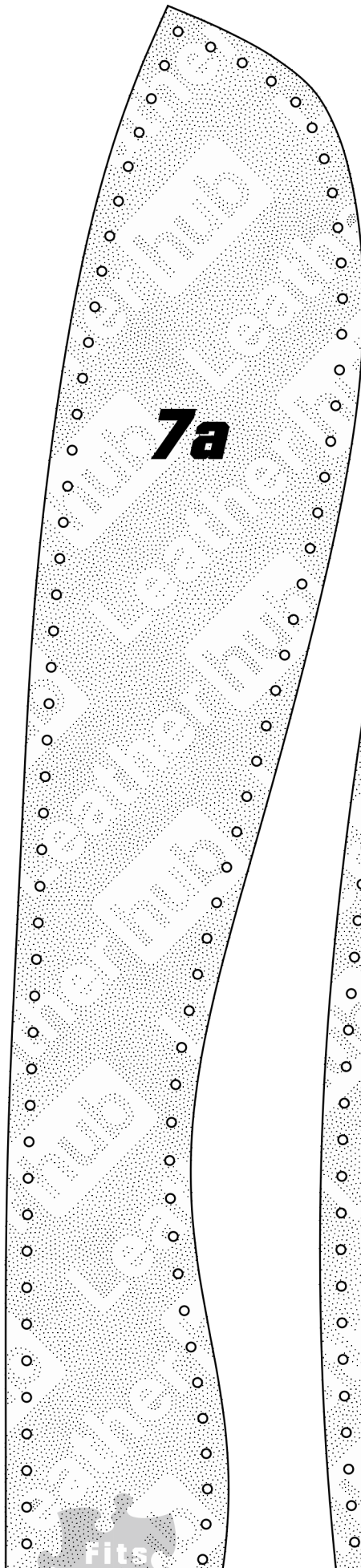
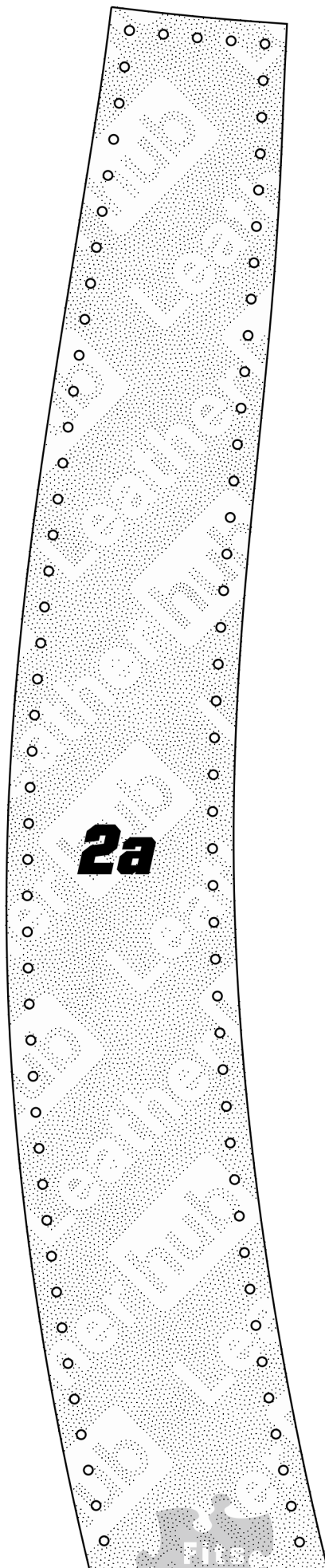
11a

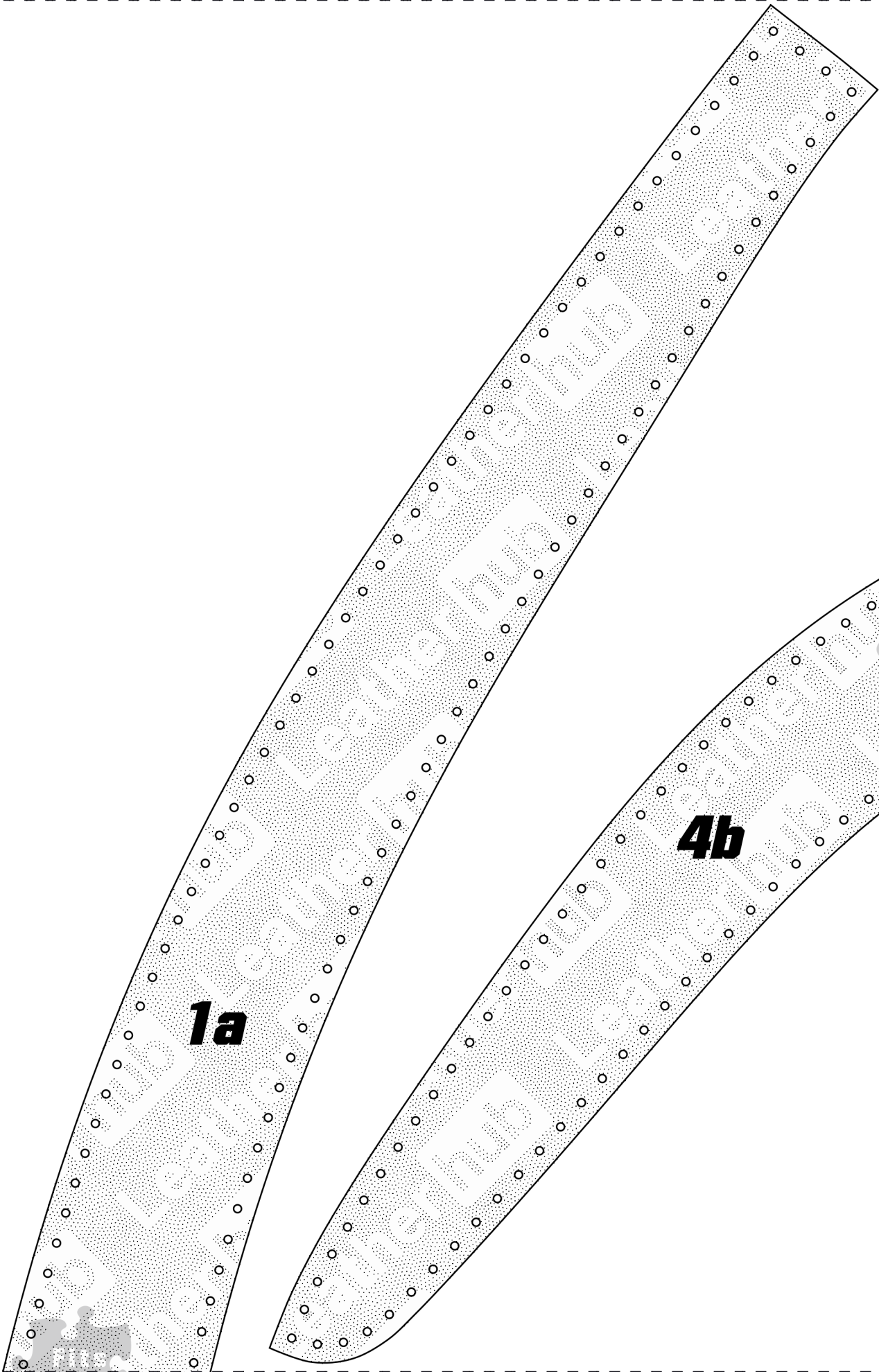
11b

Center



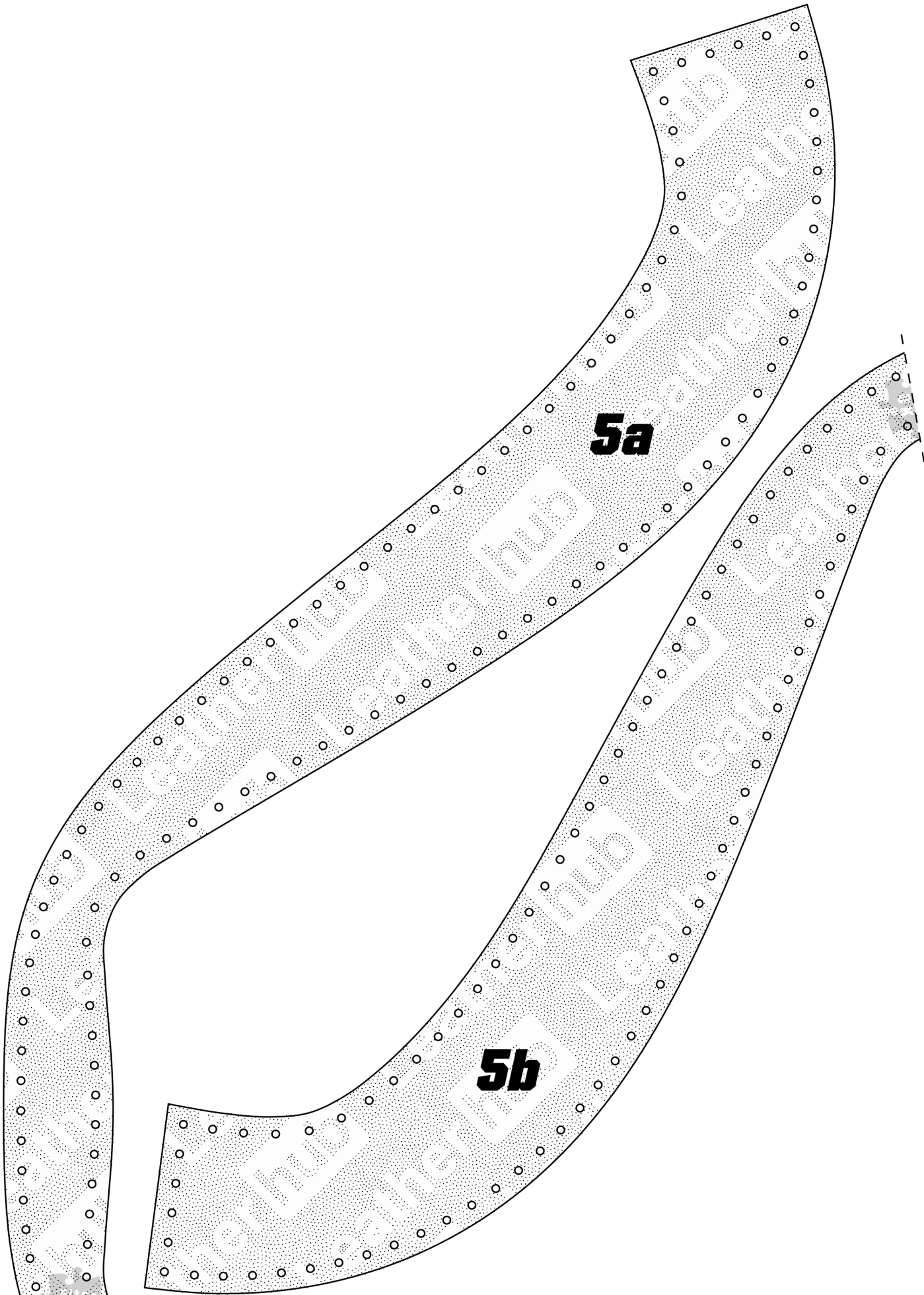
6b





1a

4b



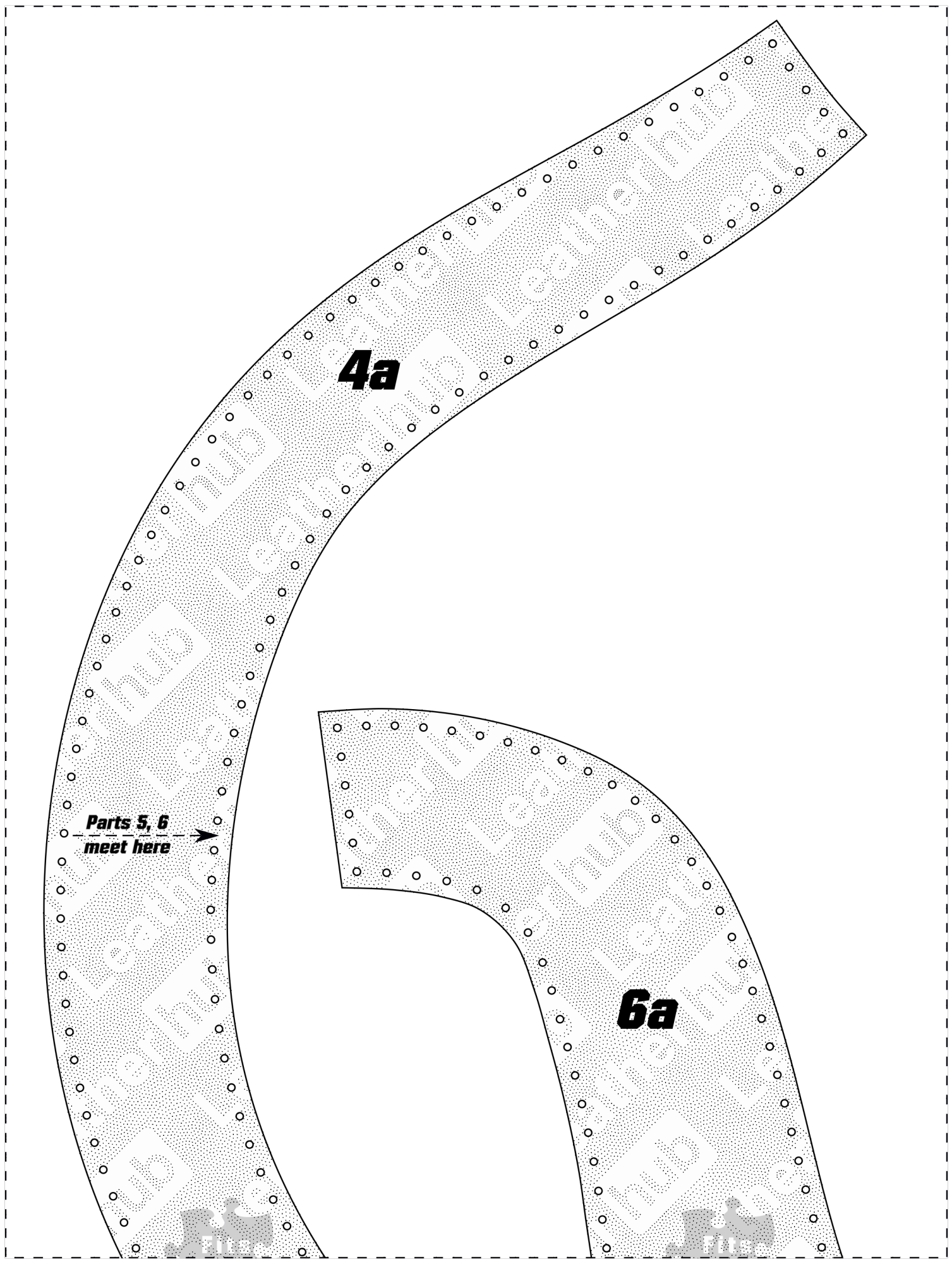
5a

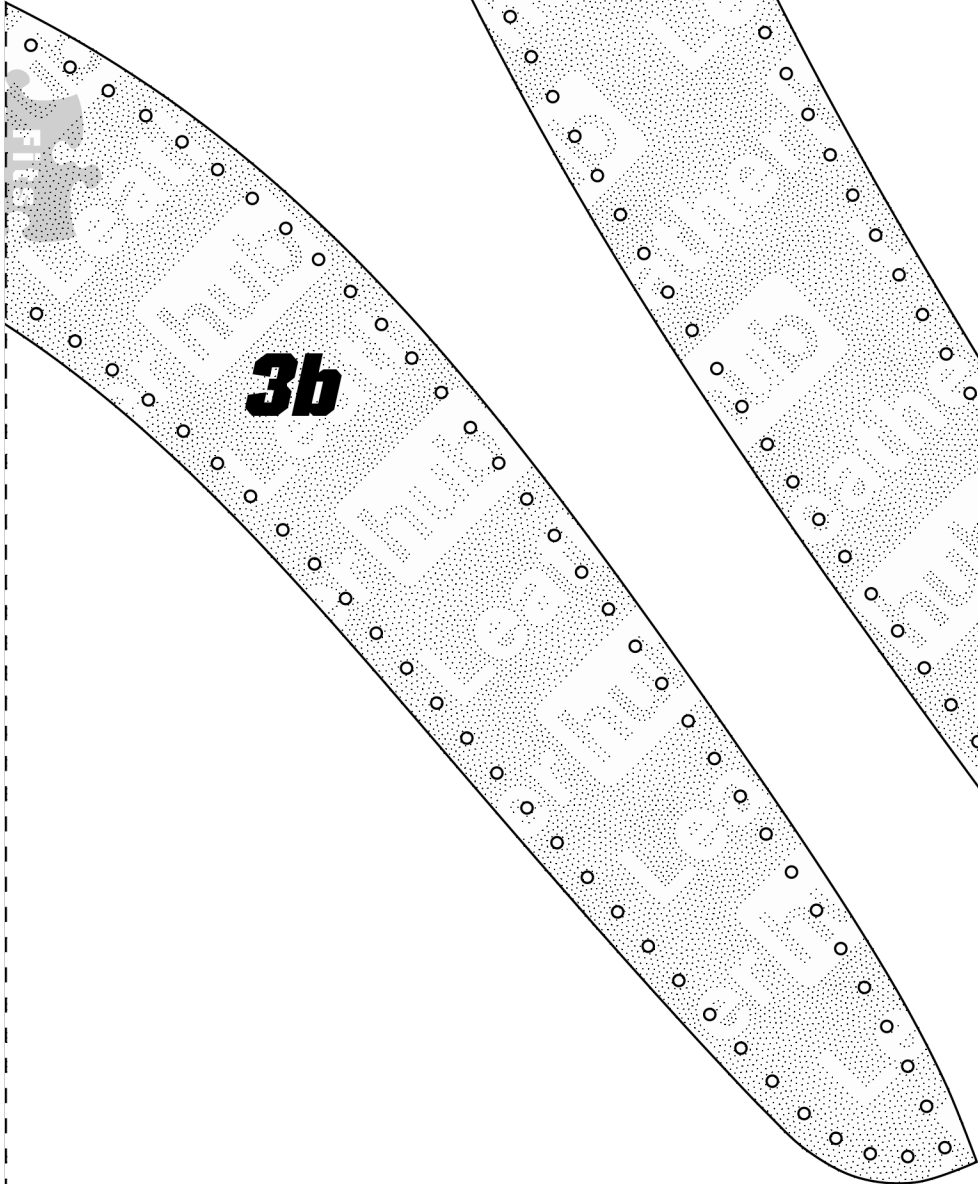
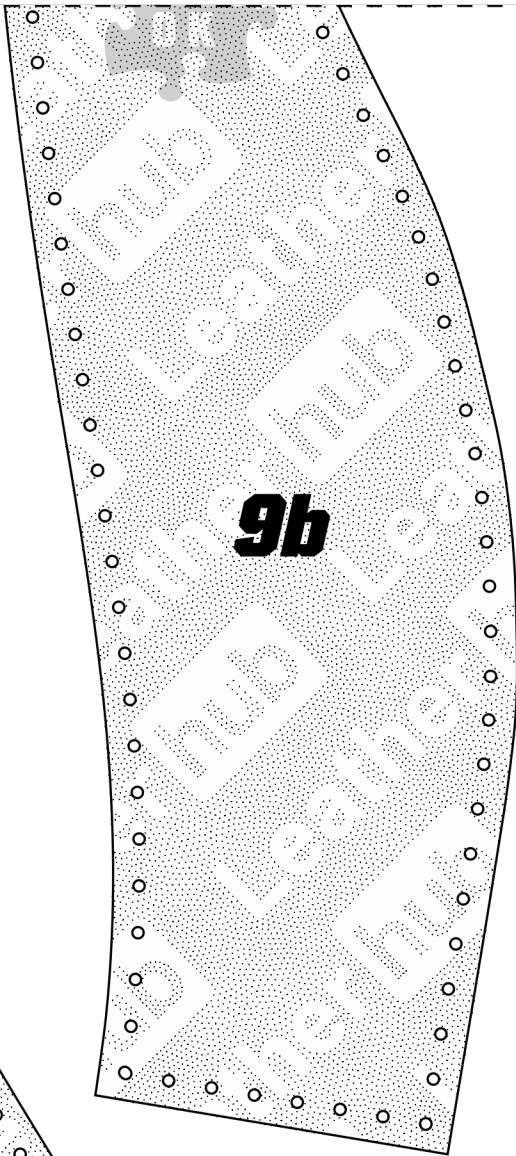
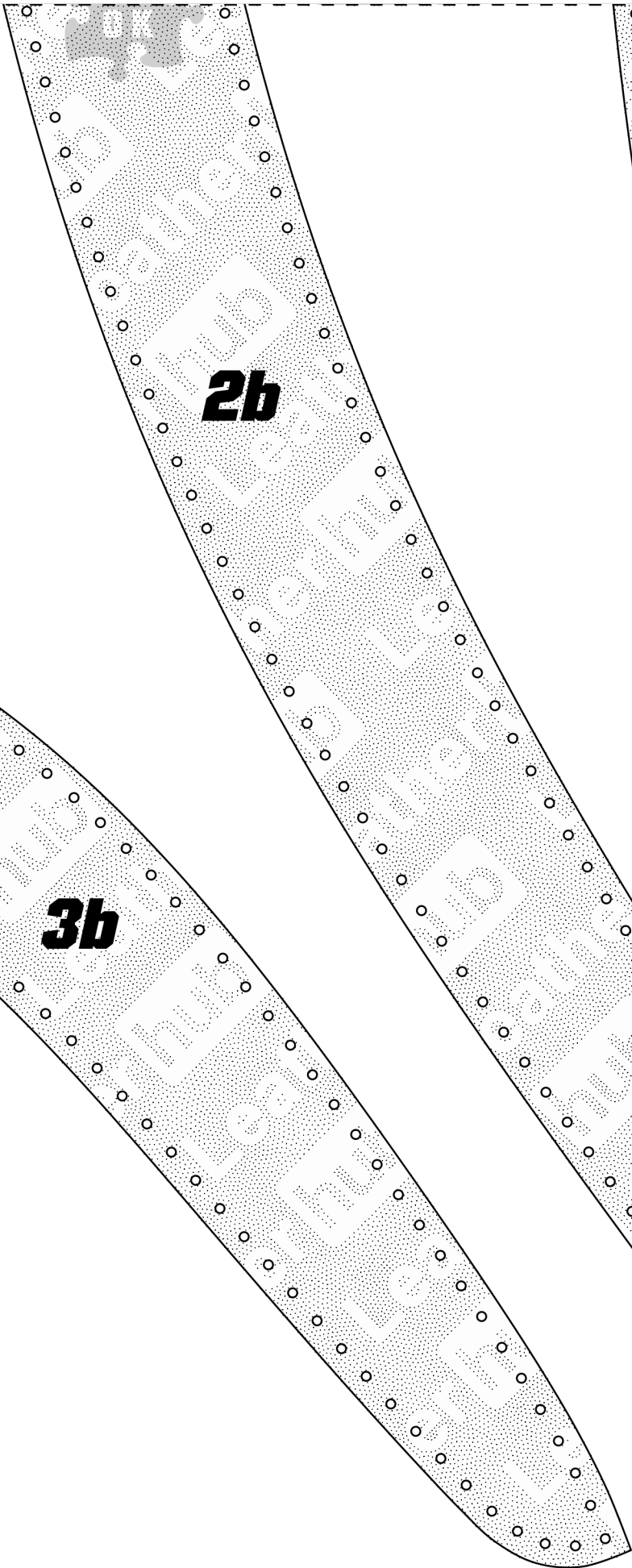
5b

4a

**Parts 5, 6
meet here** →

6a

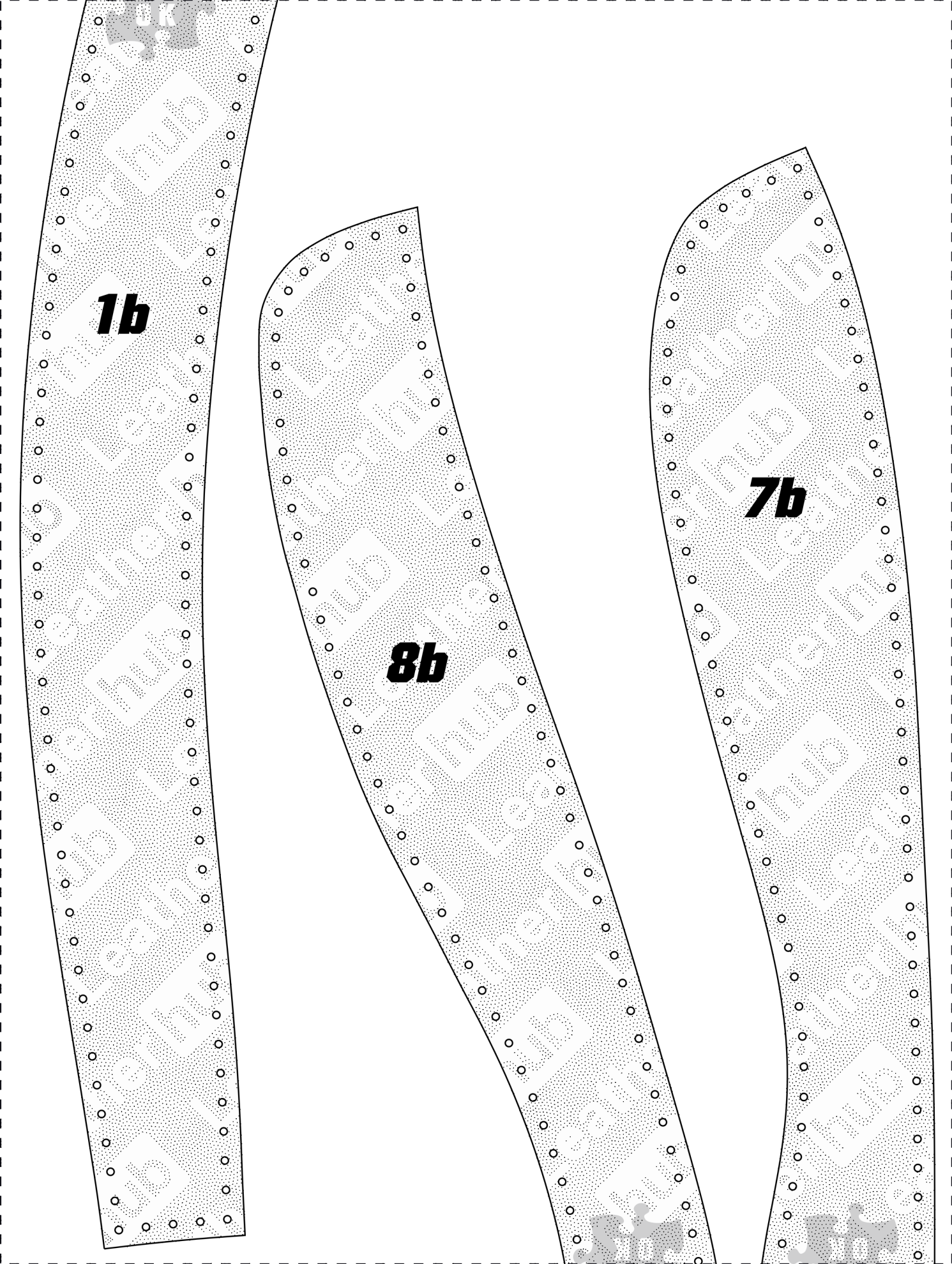




1b

8b

7b



16c

!

***We used thinner leather for this part (1.5 mm / ~ 4 oz)
because using 9 oz (~ 4 mm) as we did for the rest would
have made it far harder to sew.
We recommend you doing the same.***

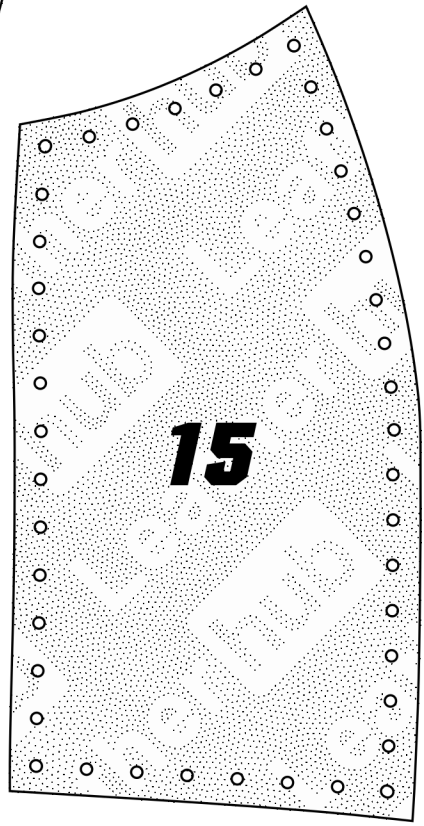
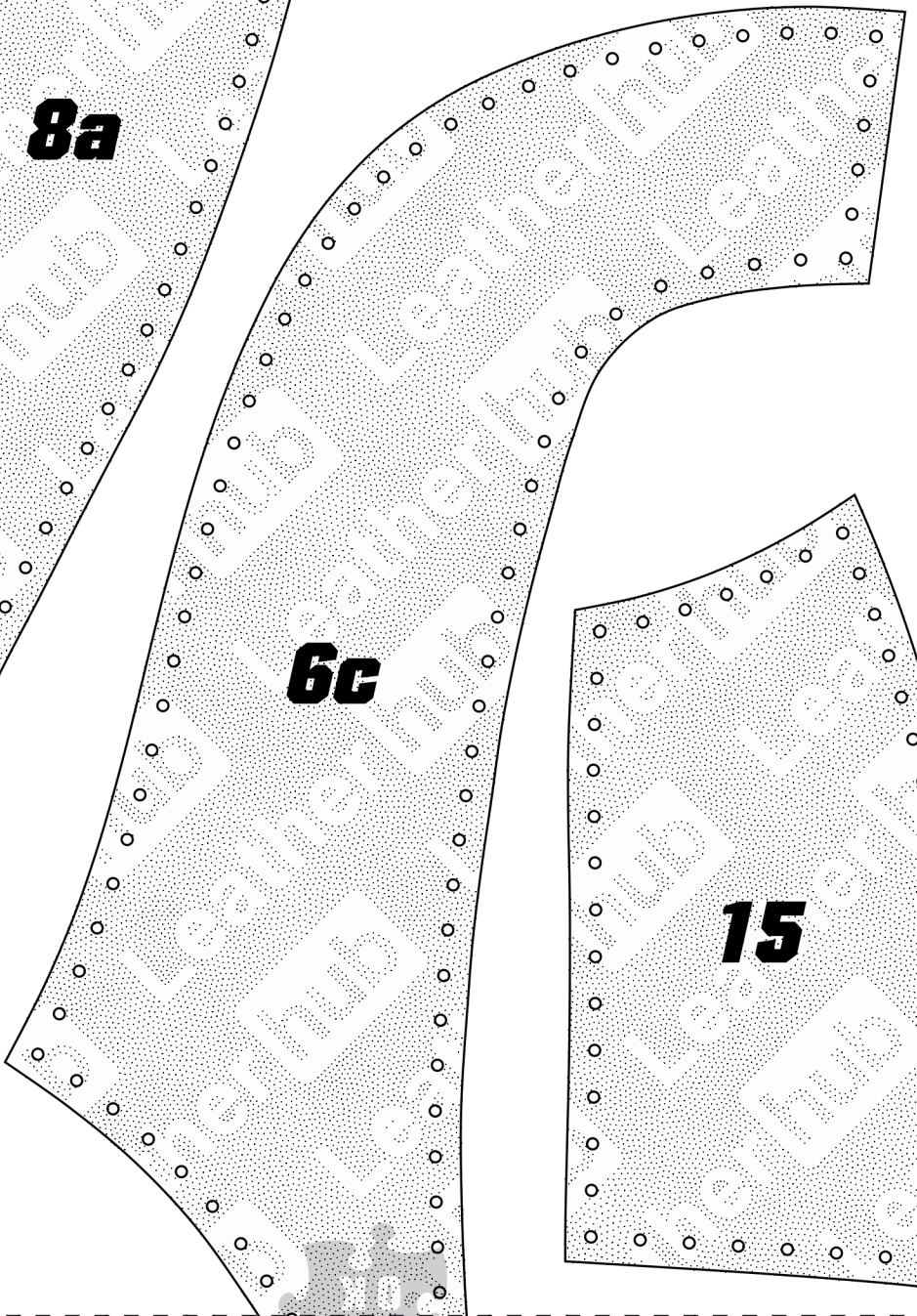
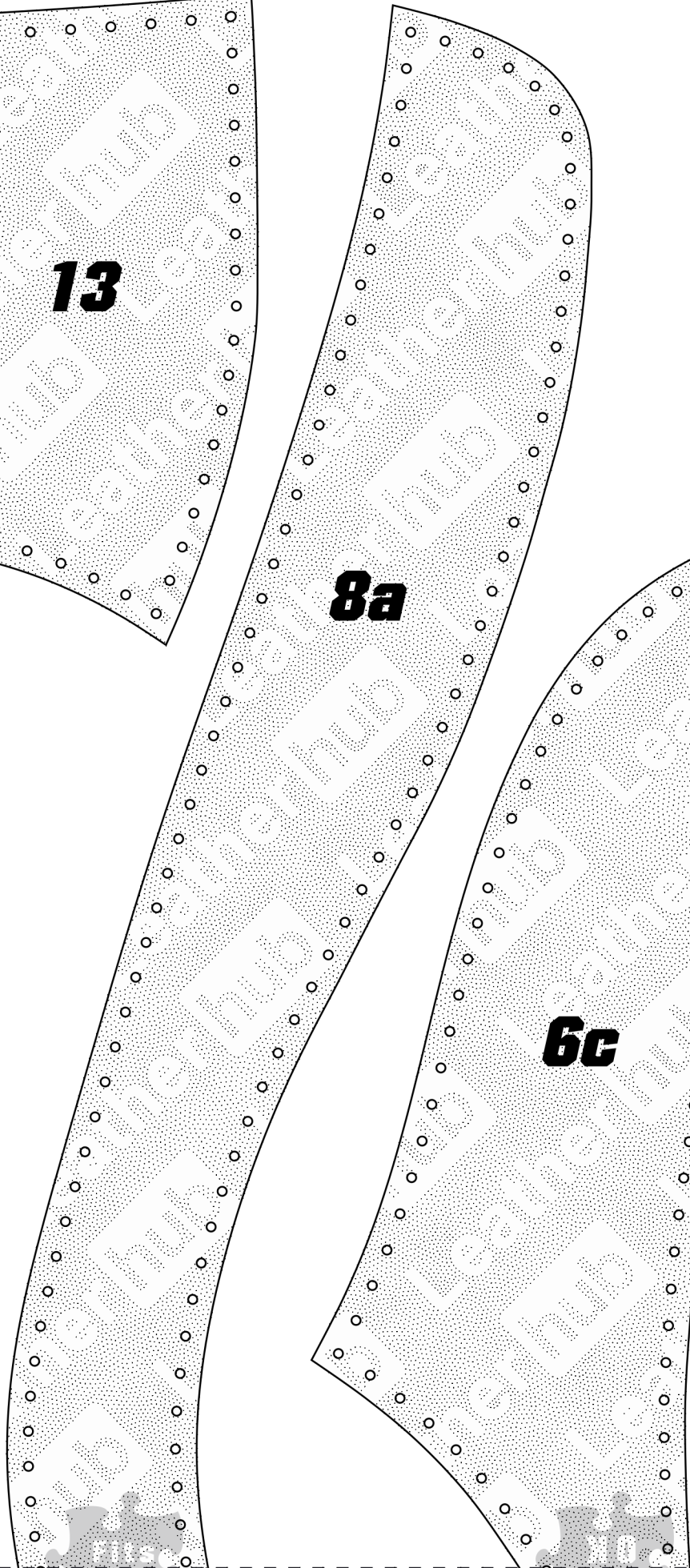
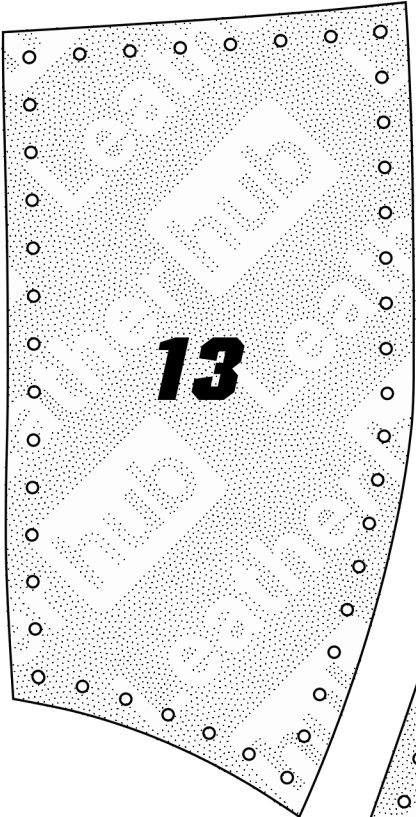
16a

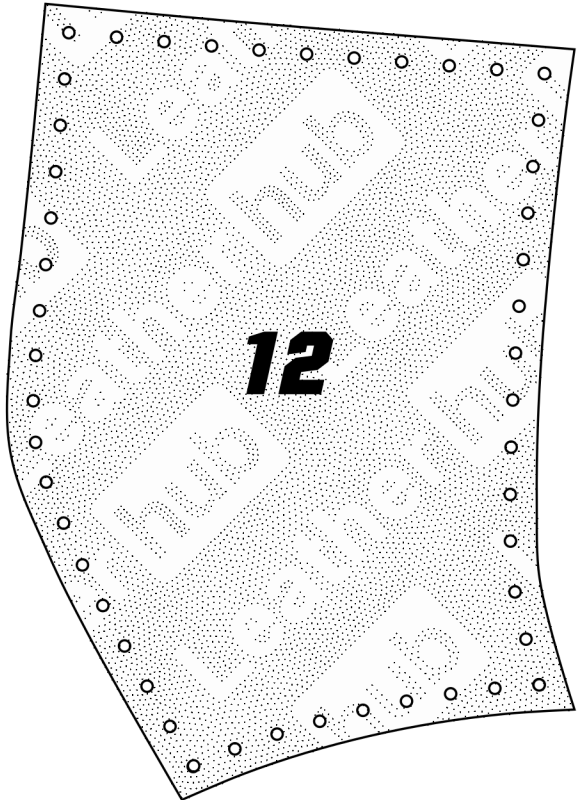
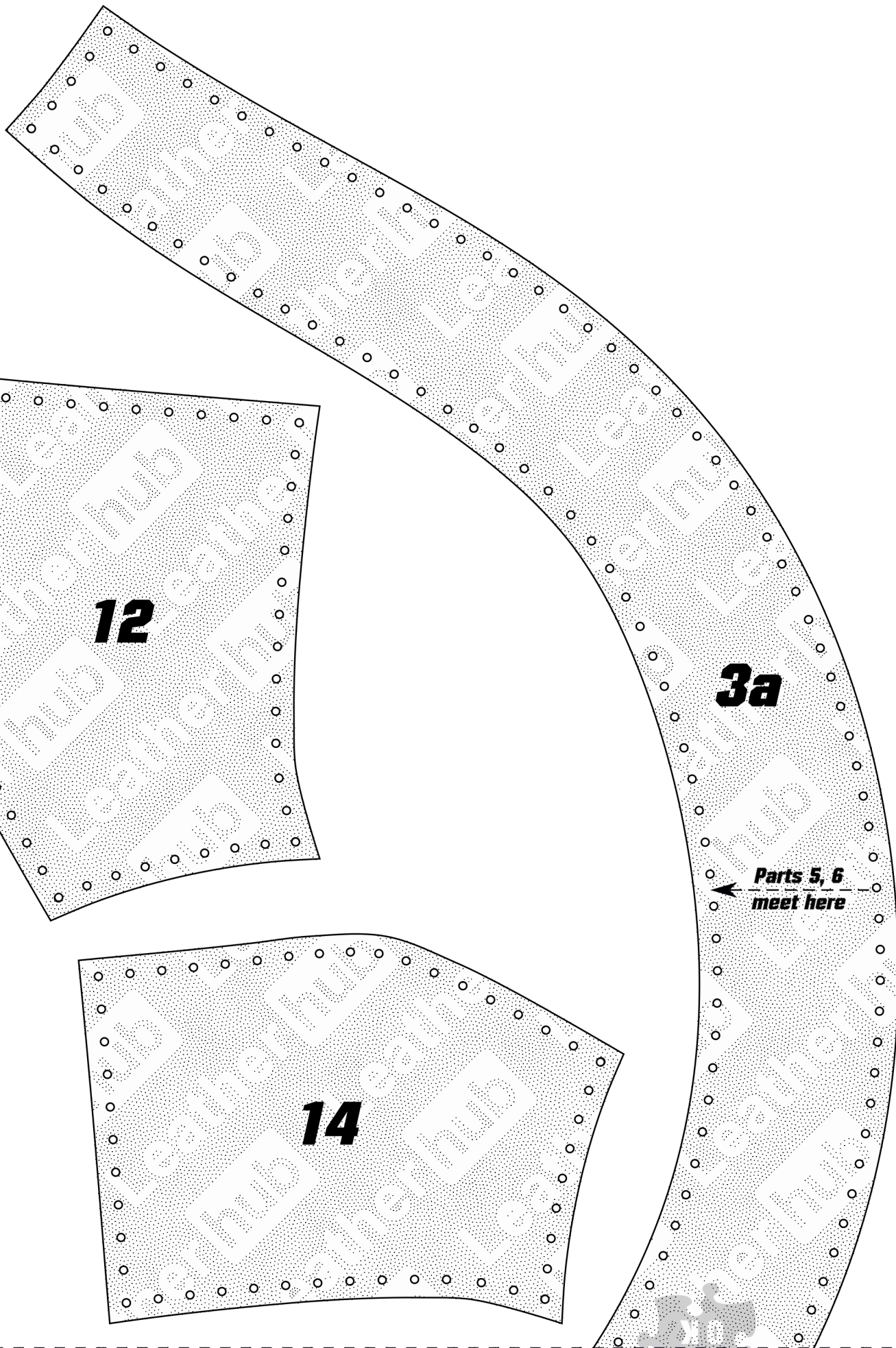
13

8a

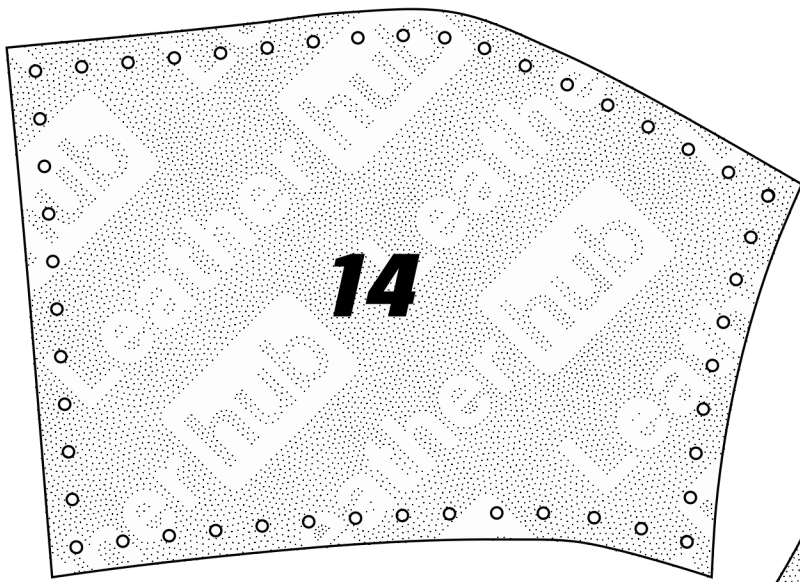
6c

15





12



14

3a

← **Parts 5, 6
meet here**

Center

Center

16b