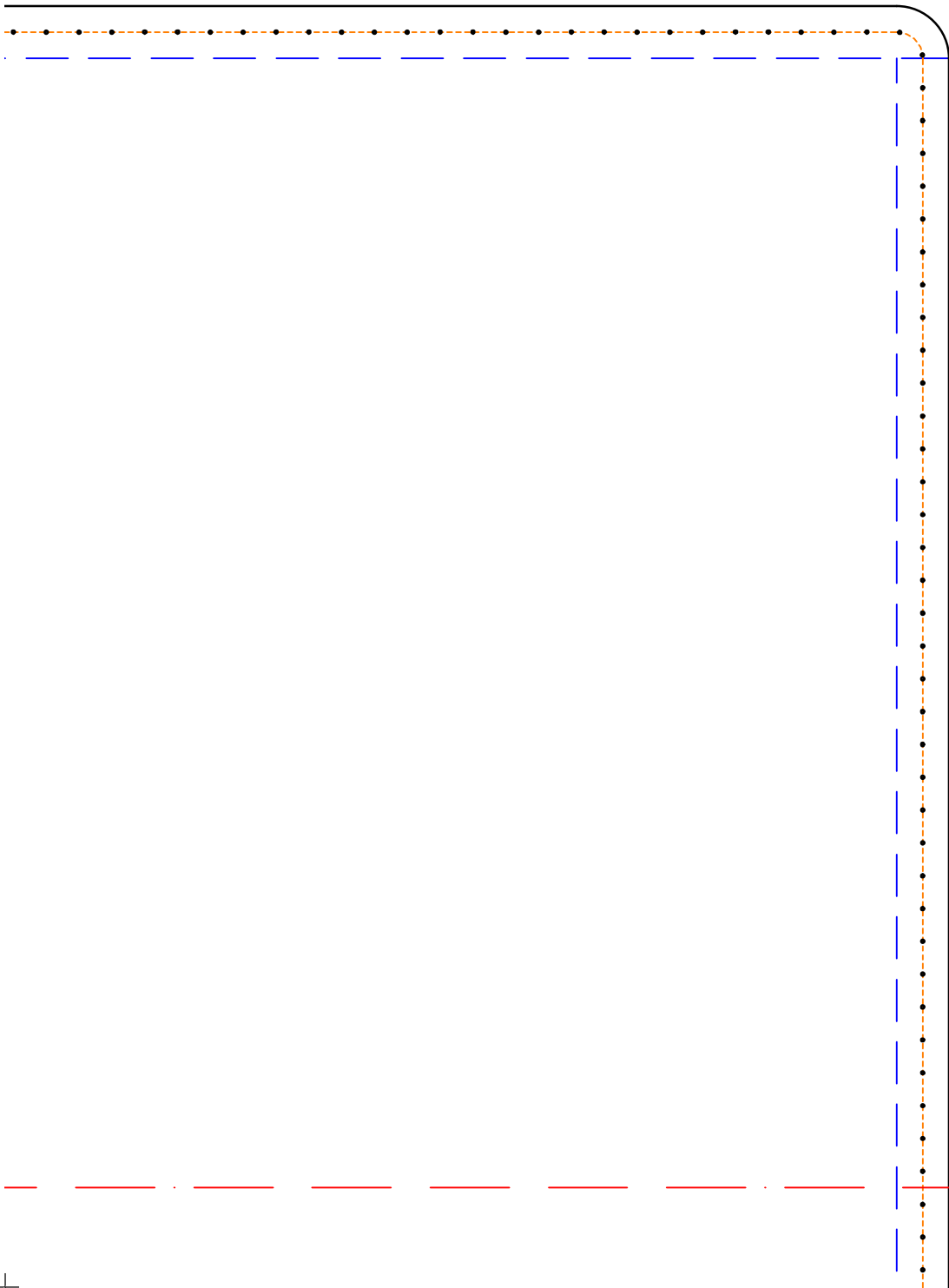
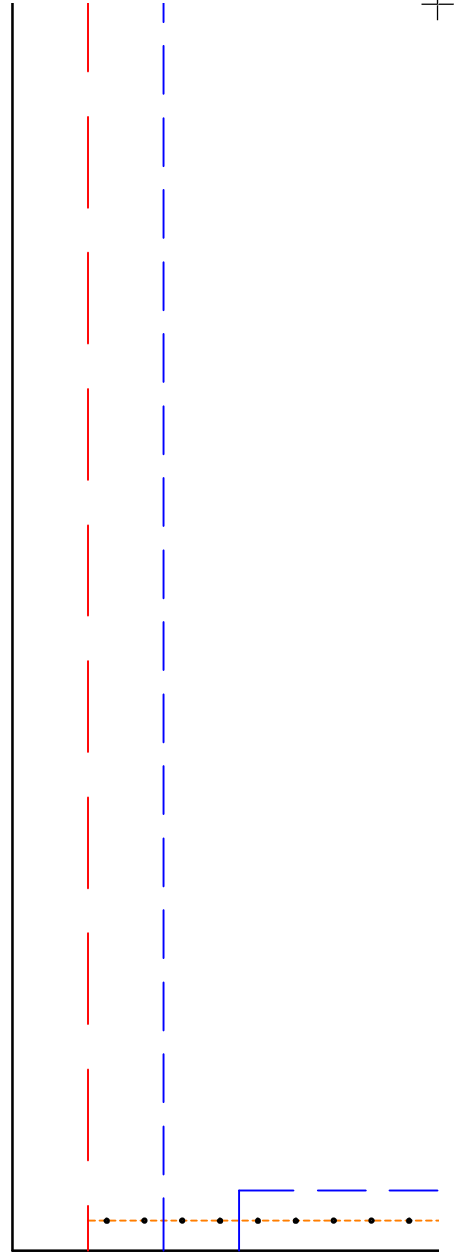
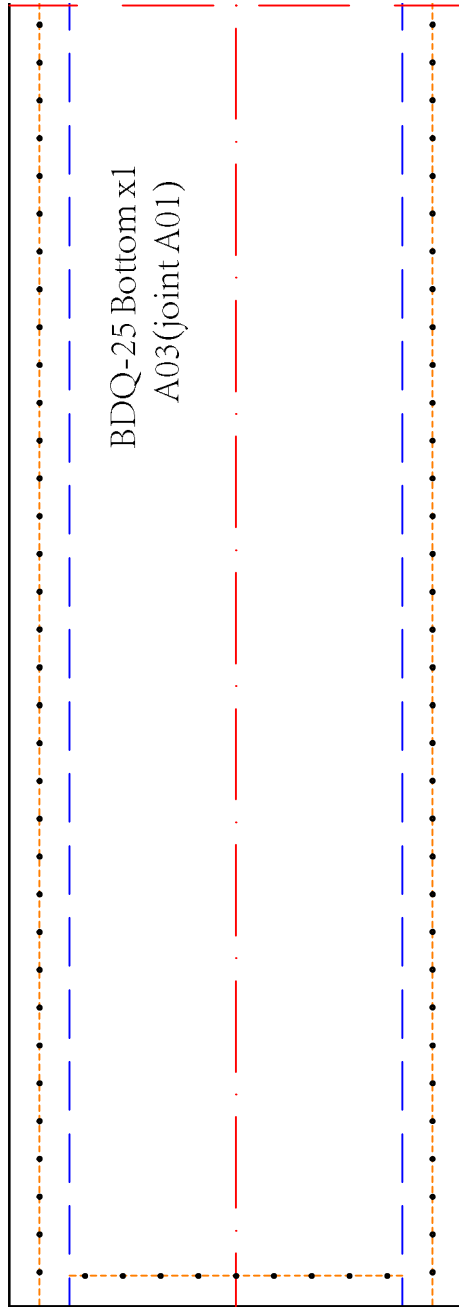


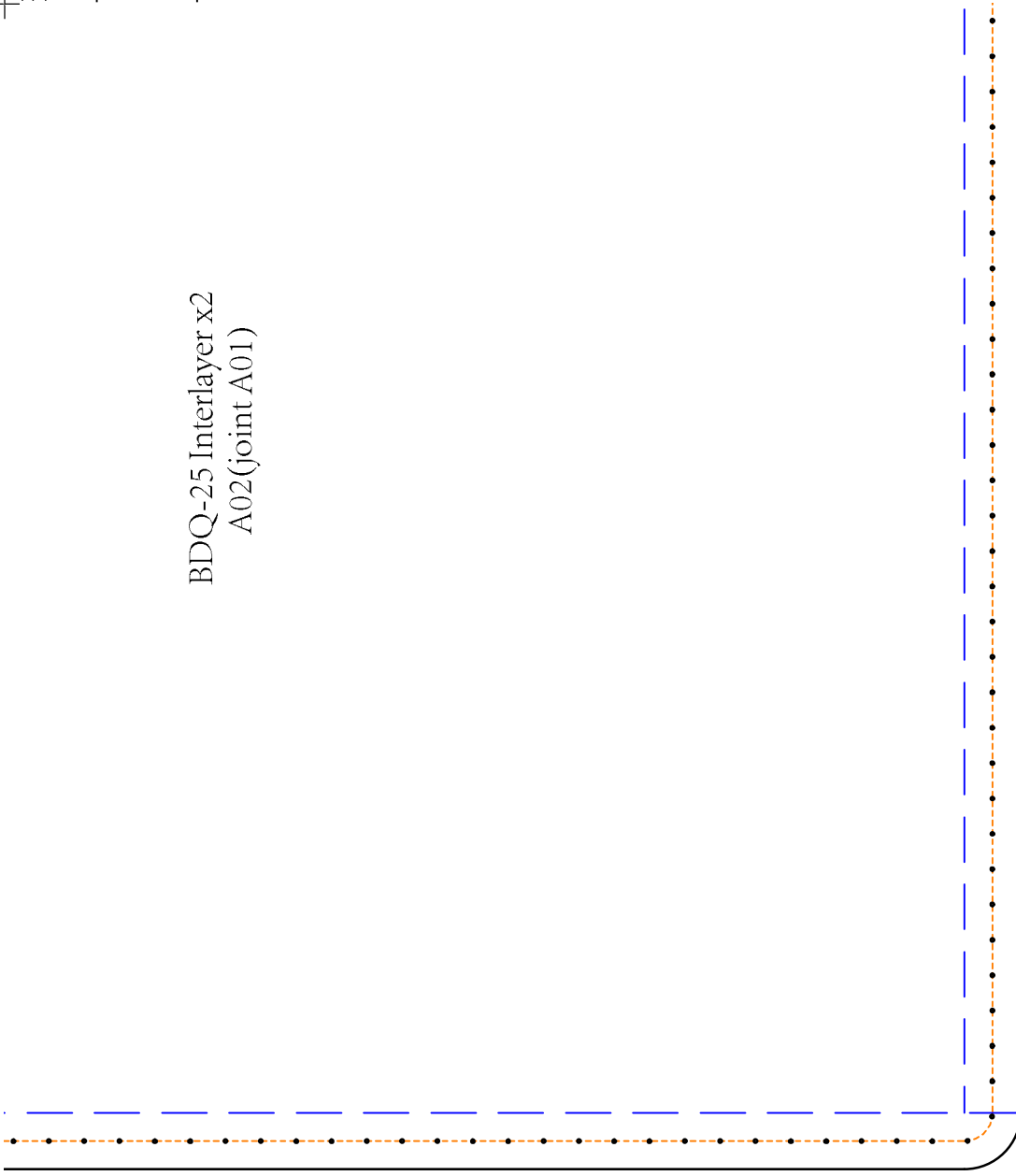
Blue line is fold line

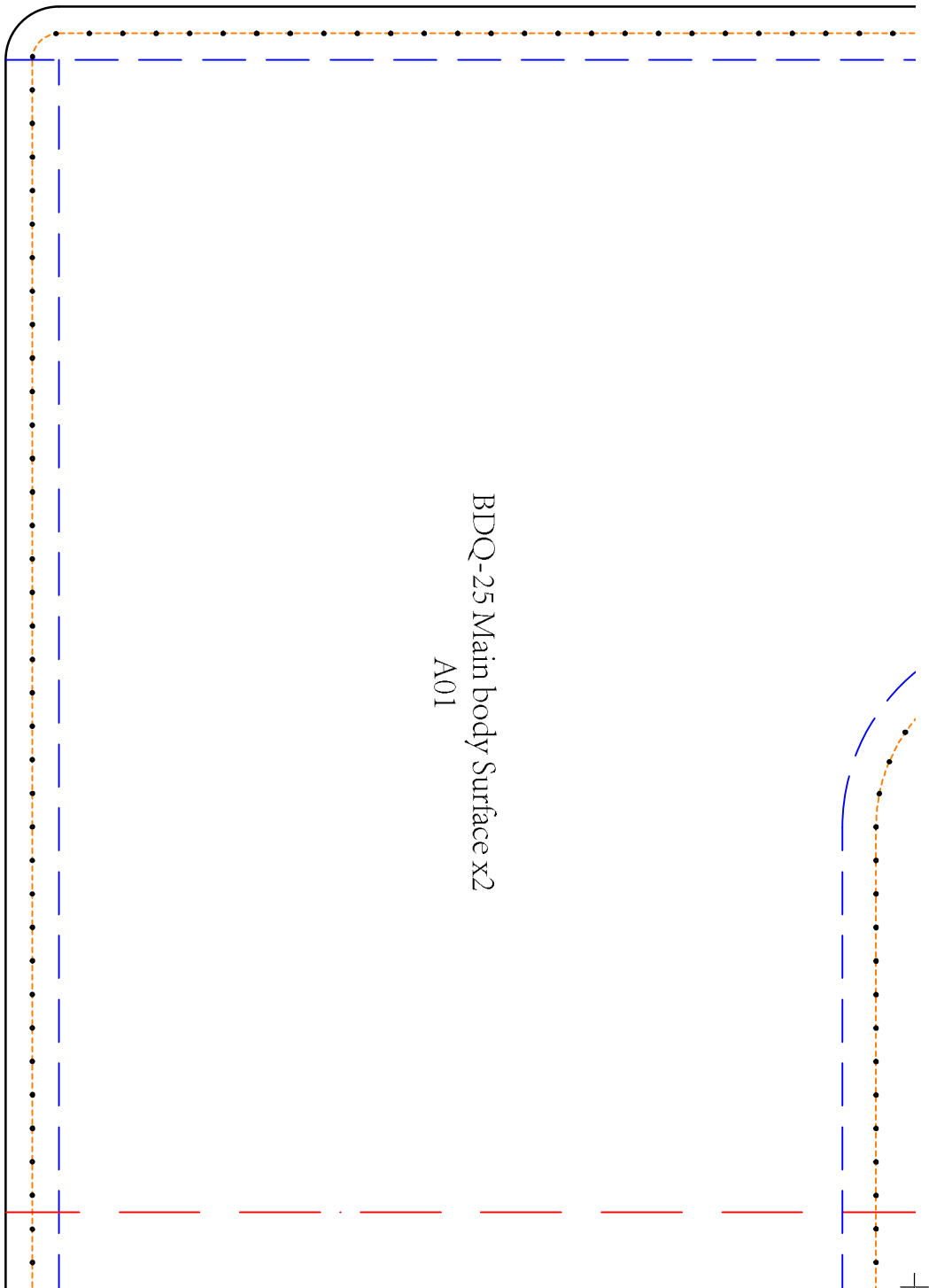






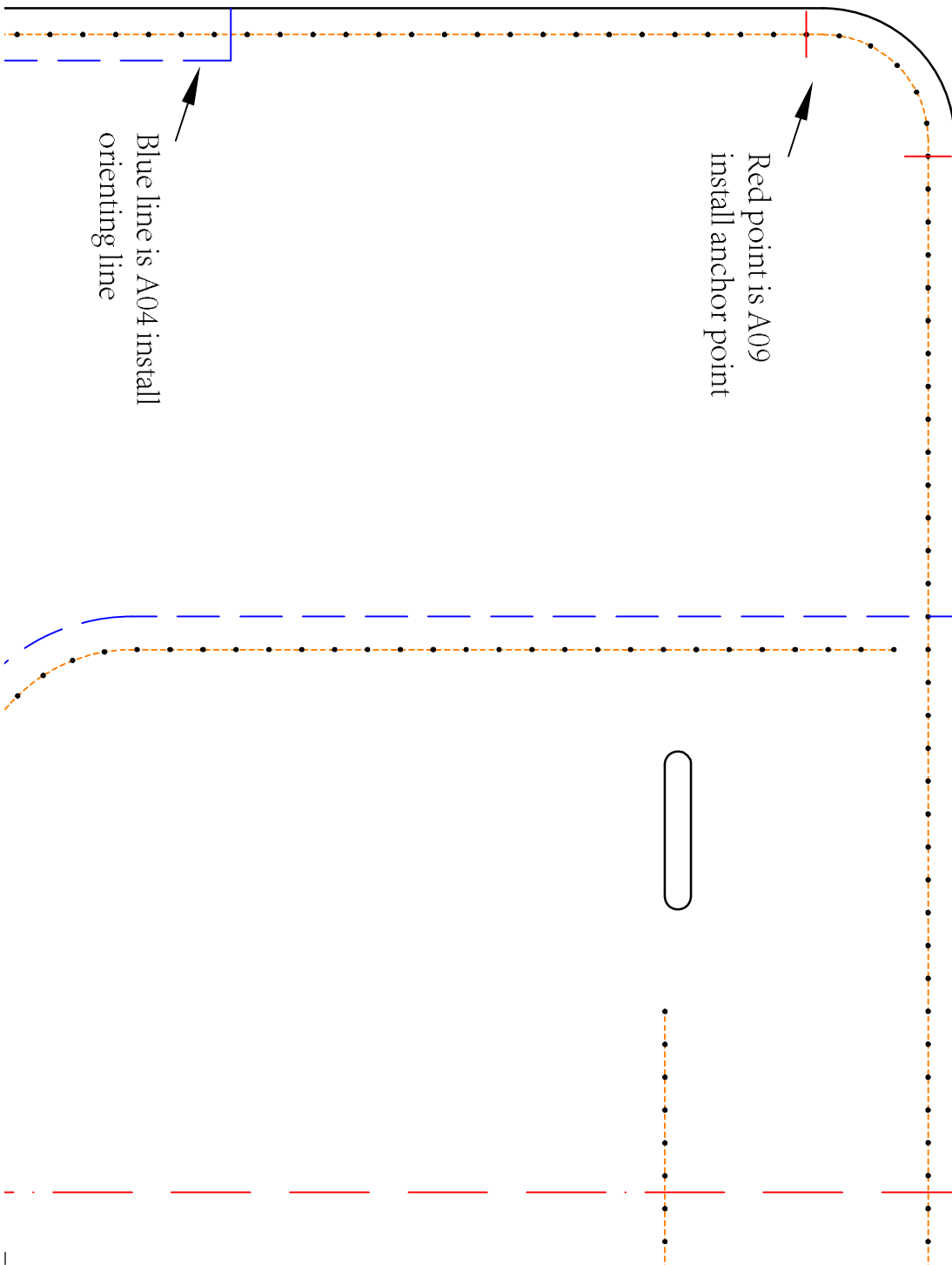
BDQ-25 Interlayer x2  
A02(joint A01)





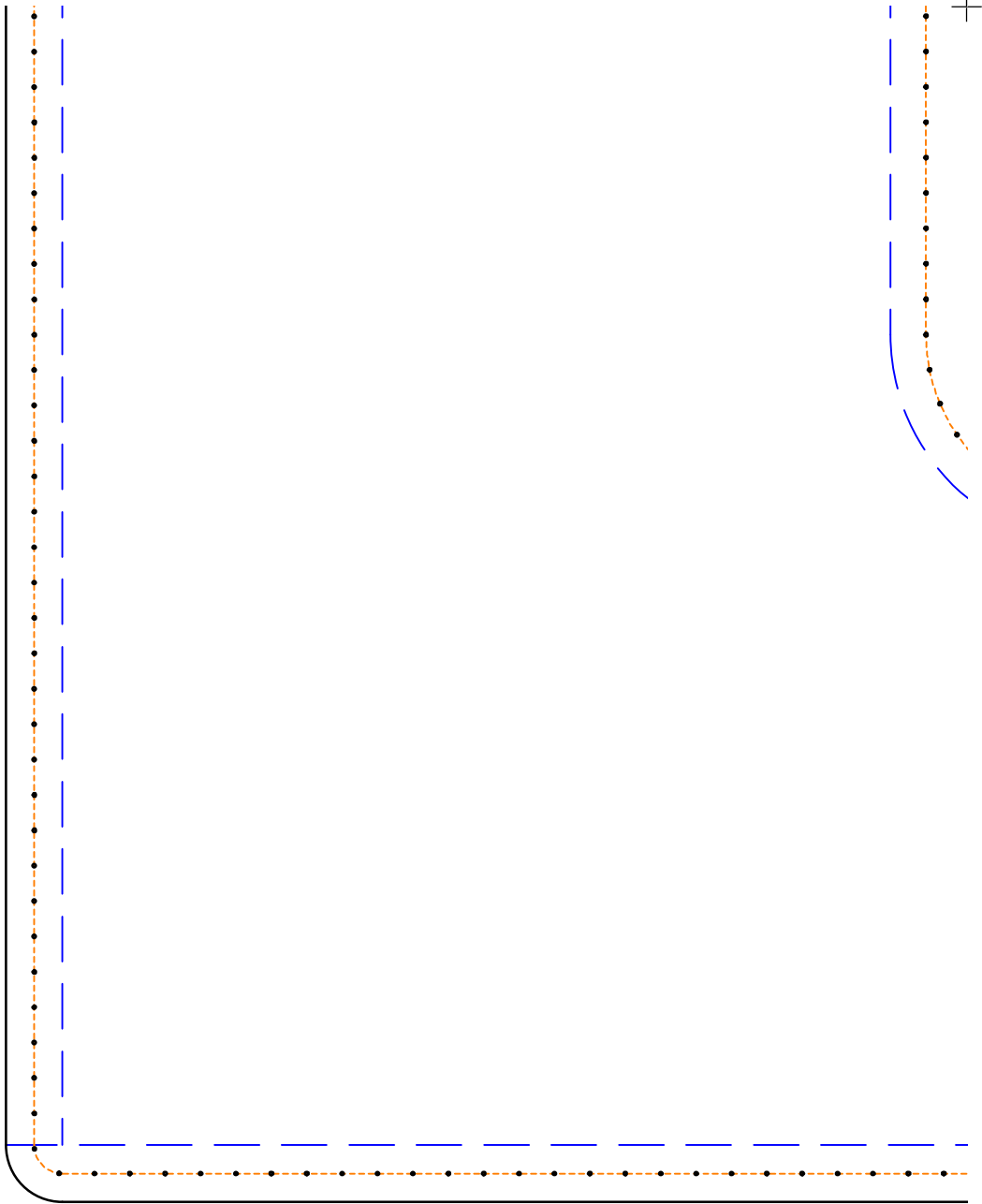
BDQ-25 Main body Surface x2  
A01

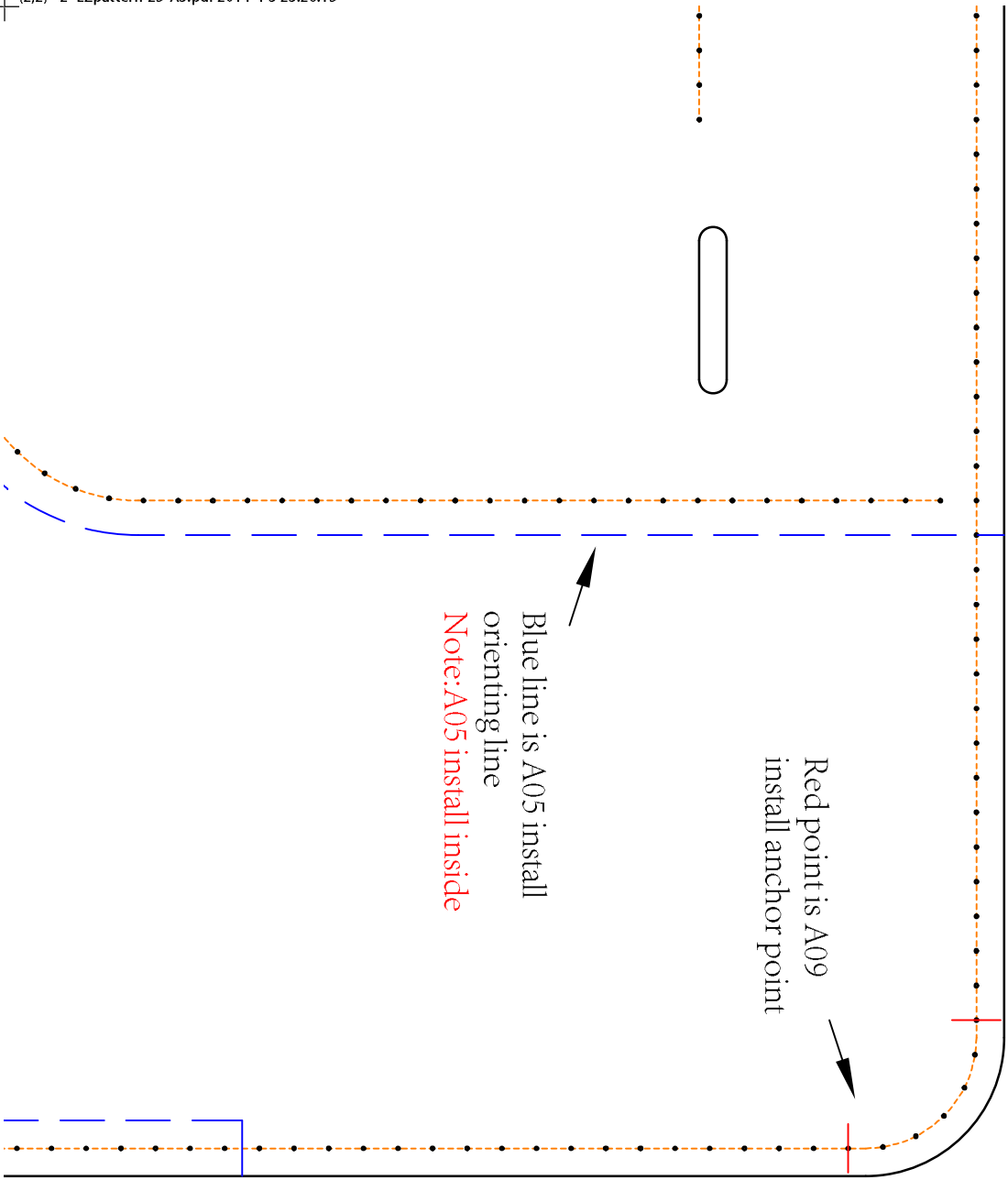




Red point is A09  
install anchor point

Blue line is A04 install  
orienting line

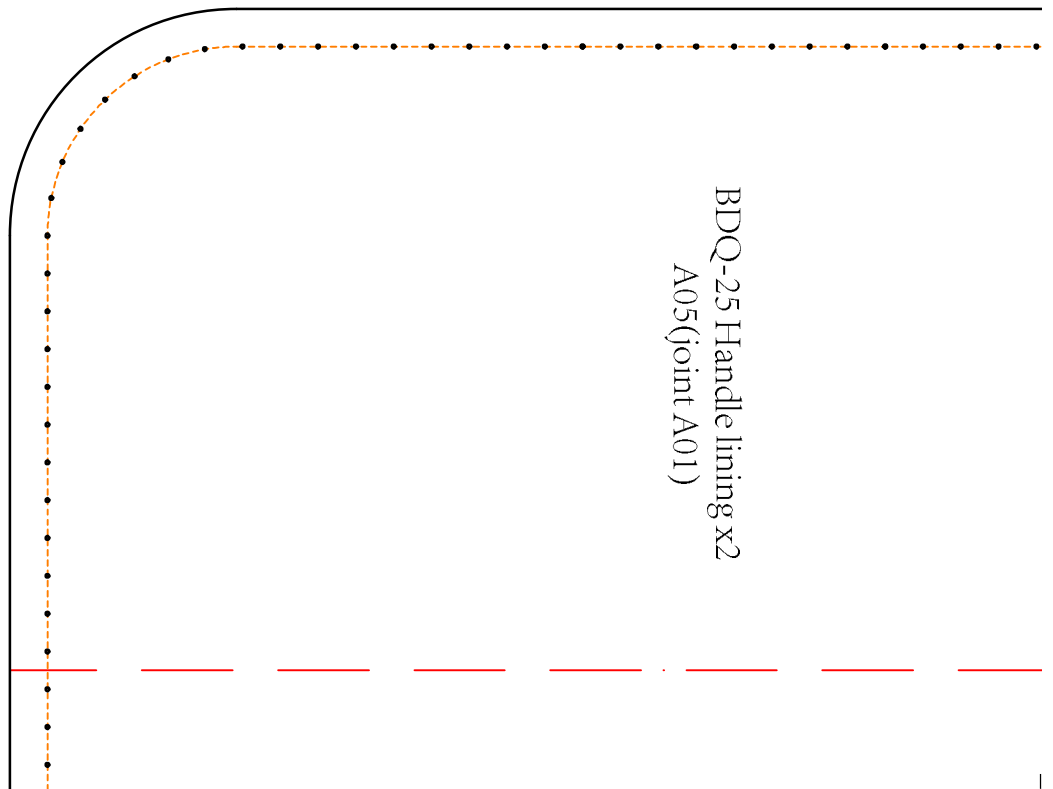
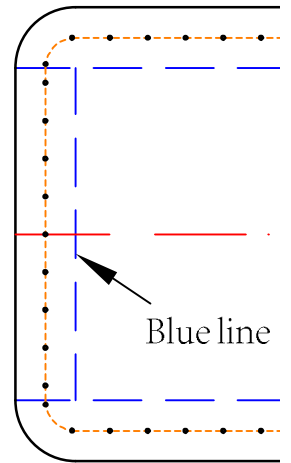
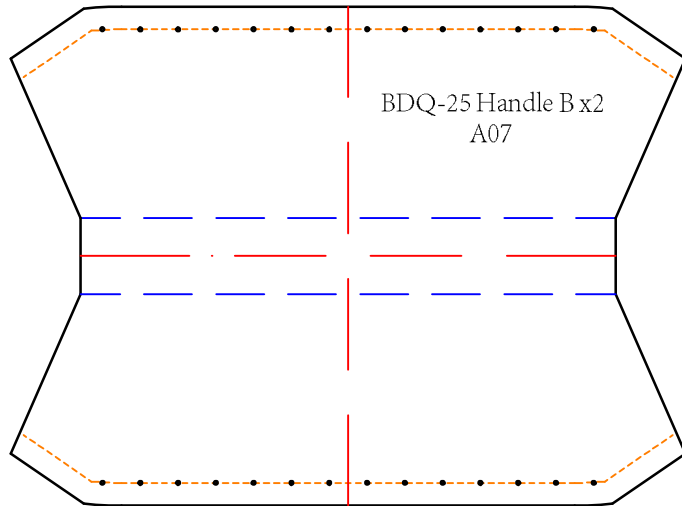


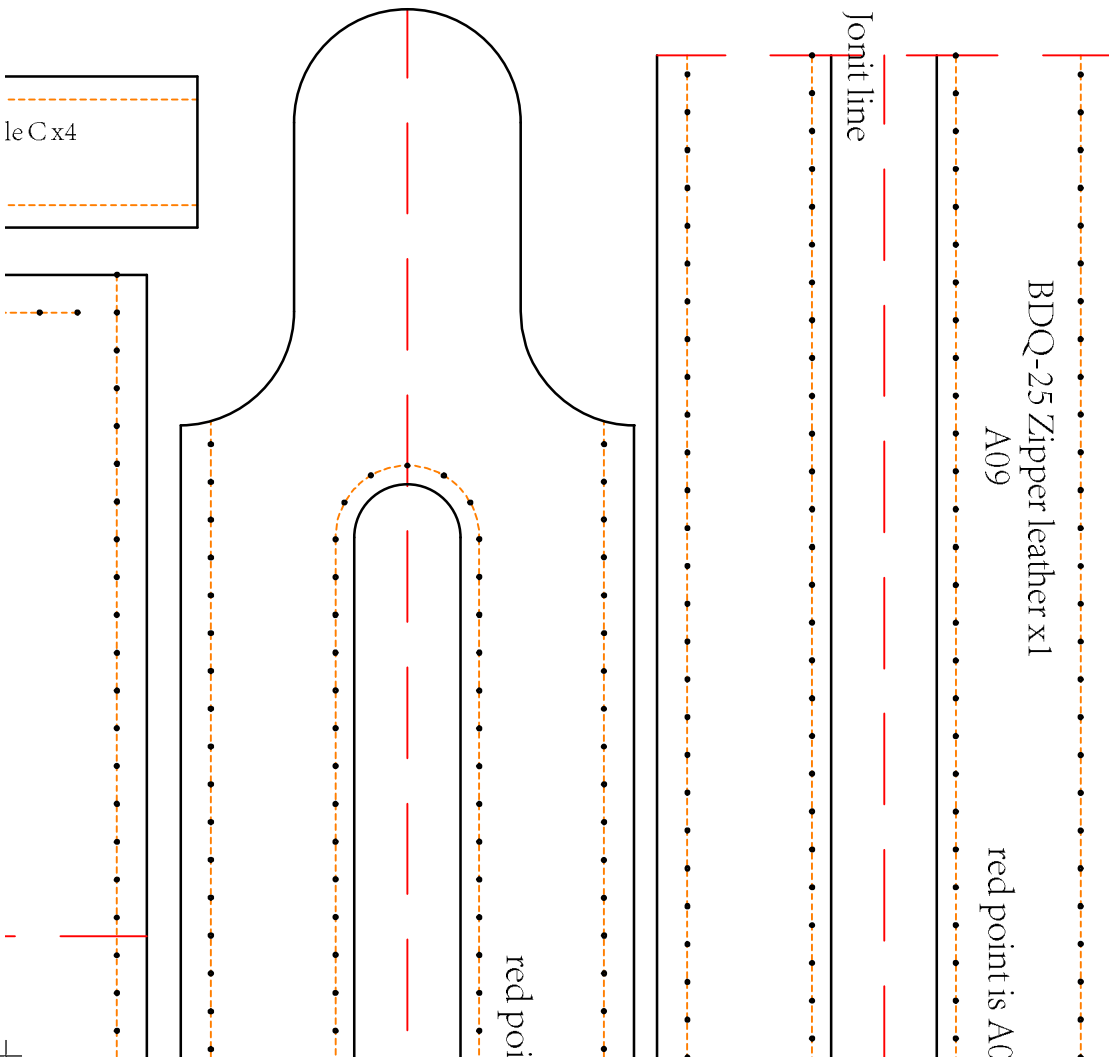
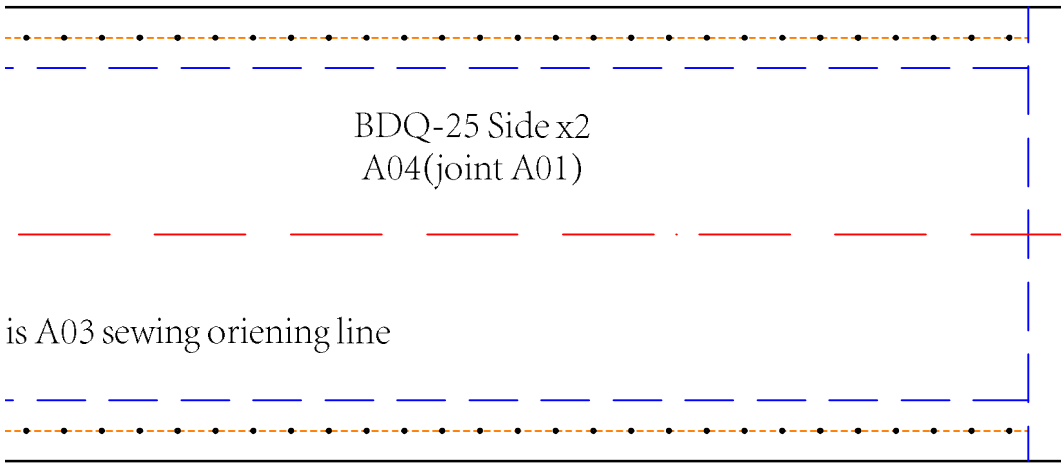


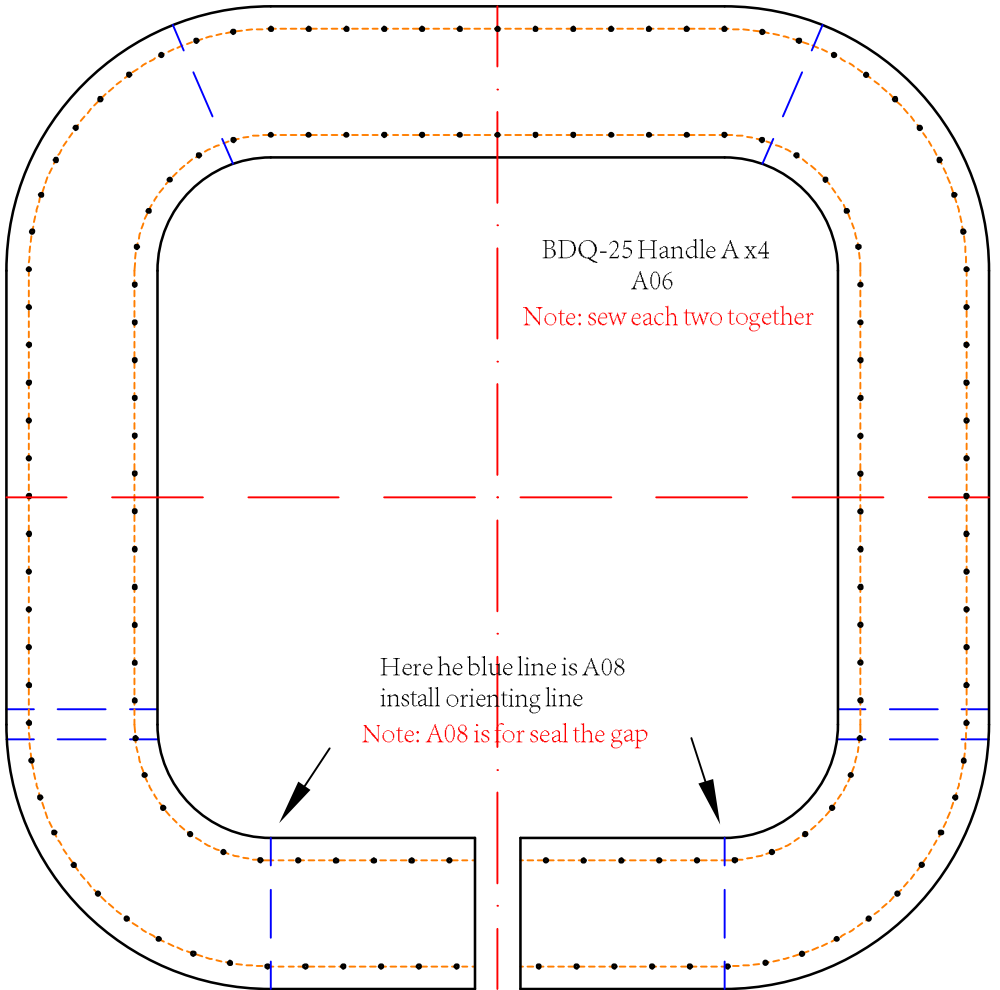
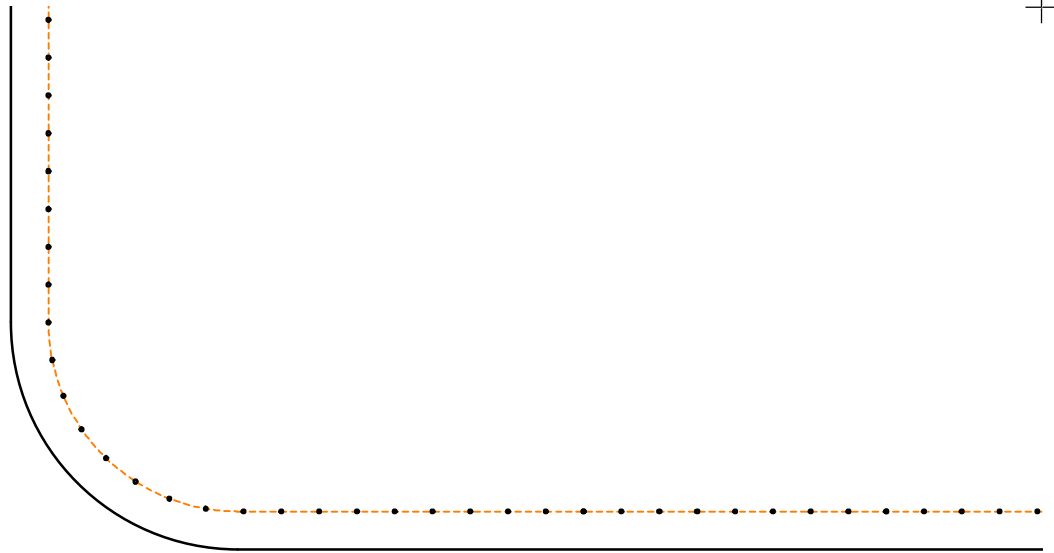




# LZpattern BDQ-25 Briefcase A3 print 1:1

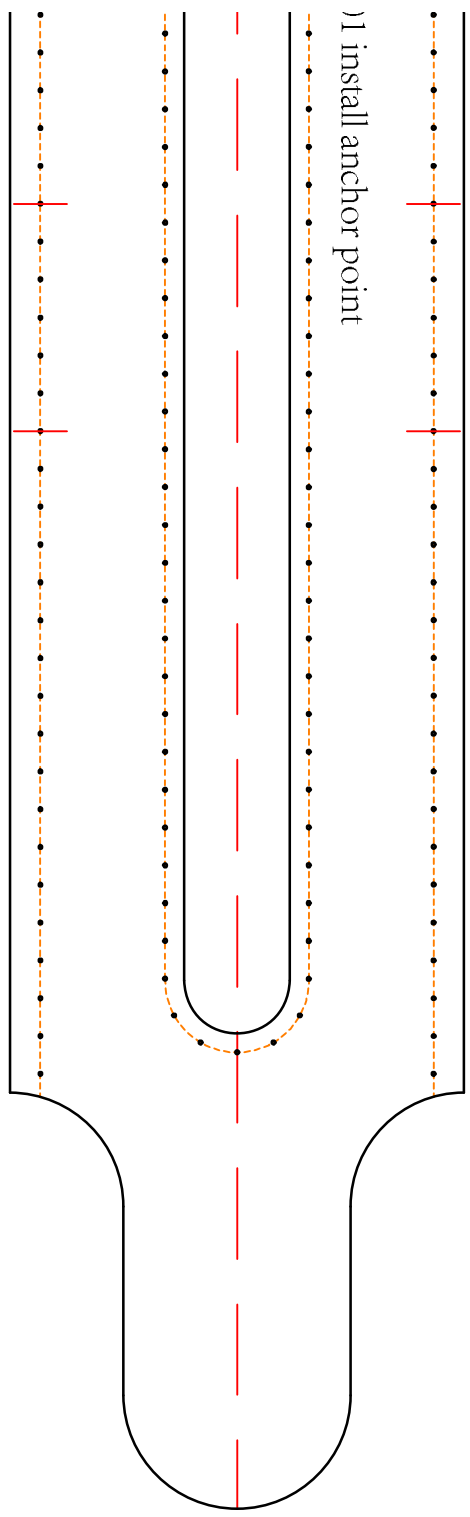








1) install anchor point



nt is A01 install anchor point

BDQ-25 Zipper leather x1  
A09

Joint line

