

1

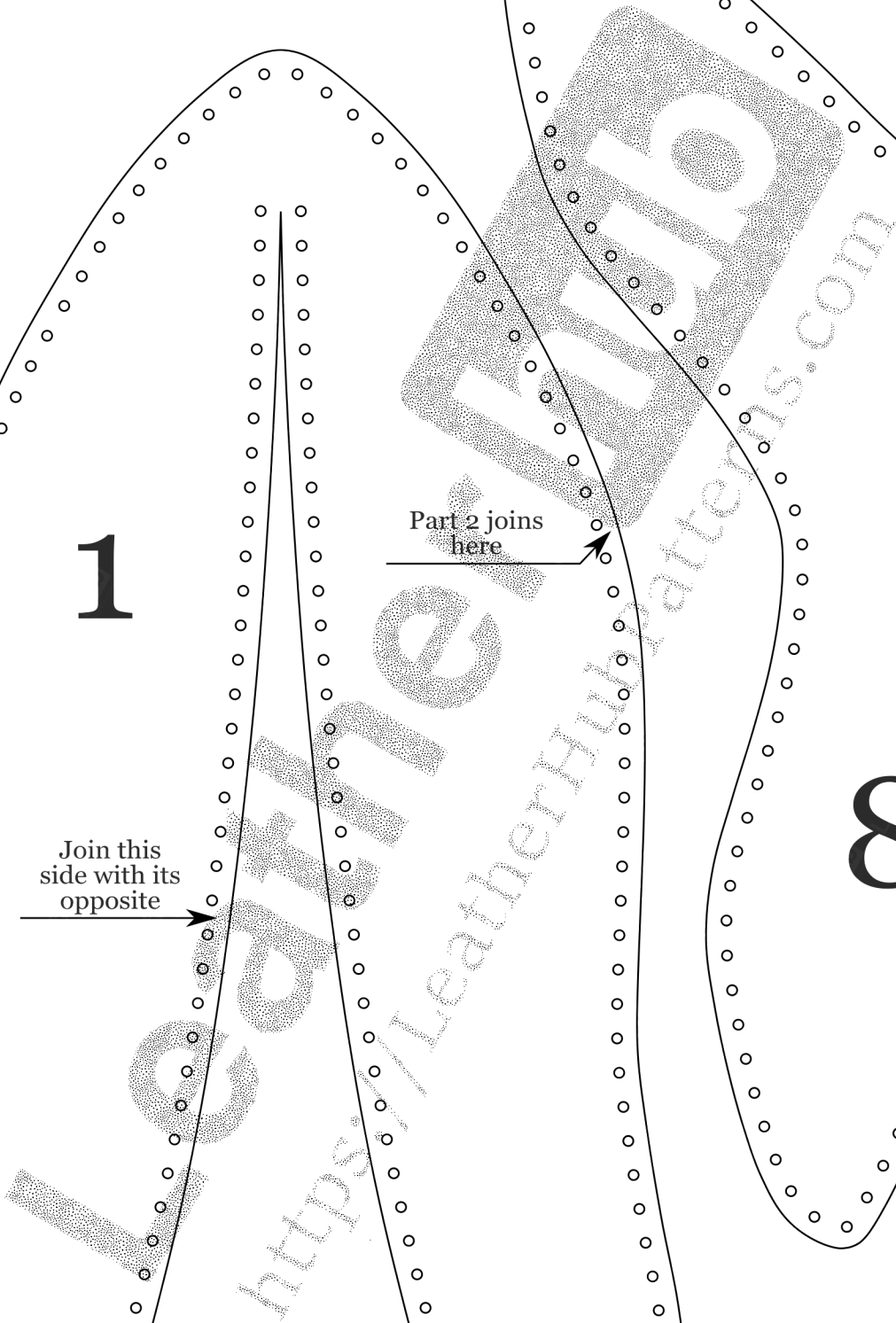
Join this side with its opposite

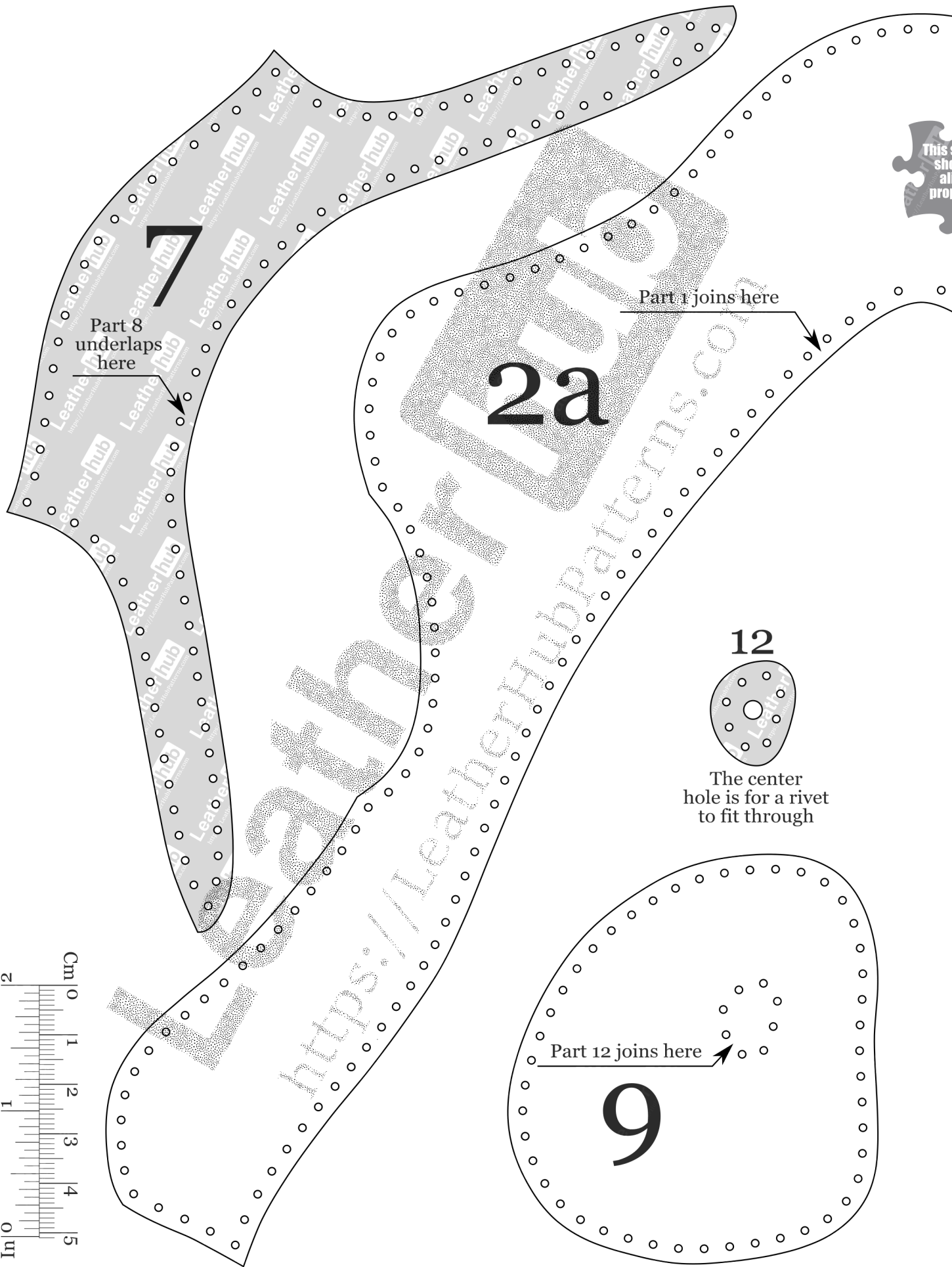
Part 2 joins here

Part 7 overlaps here

8

Part 7 joins here



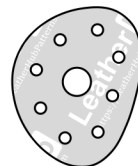


Part 8 underlaps here

Part 1 joins here

2a

12

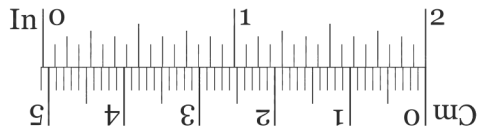


The center hole is for a rivet to fit through

Part 12 joins here

9





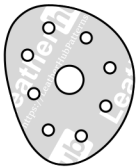
Parts 3+4+5+6 overlap along this perimeter

2b

4a



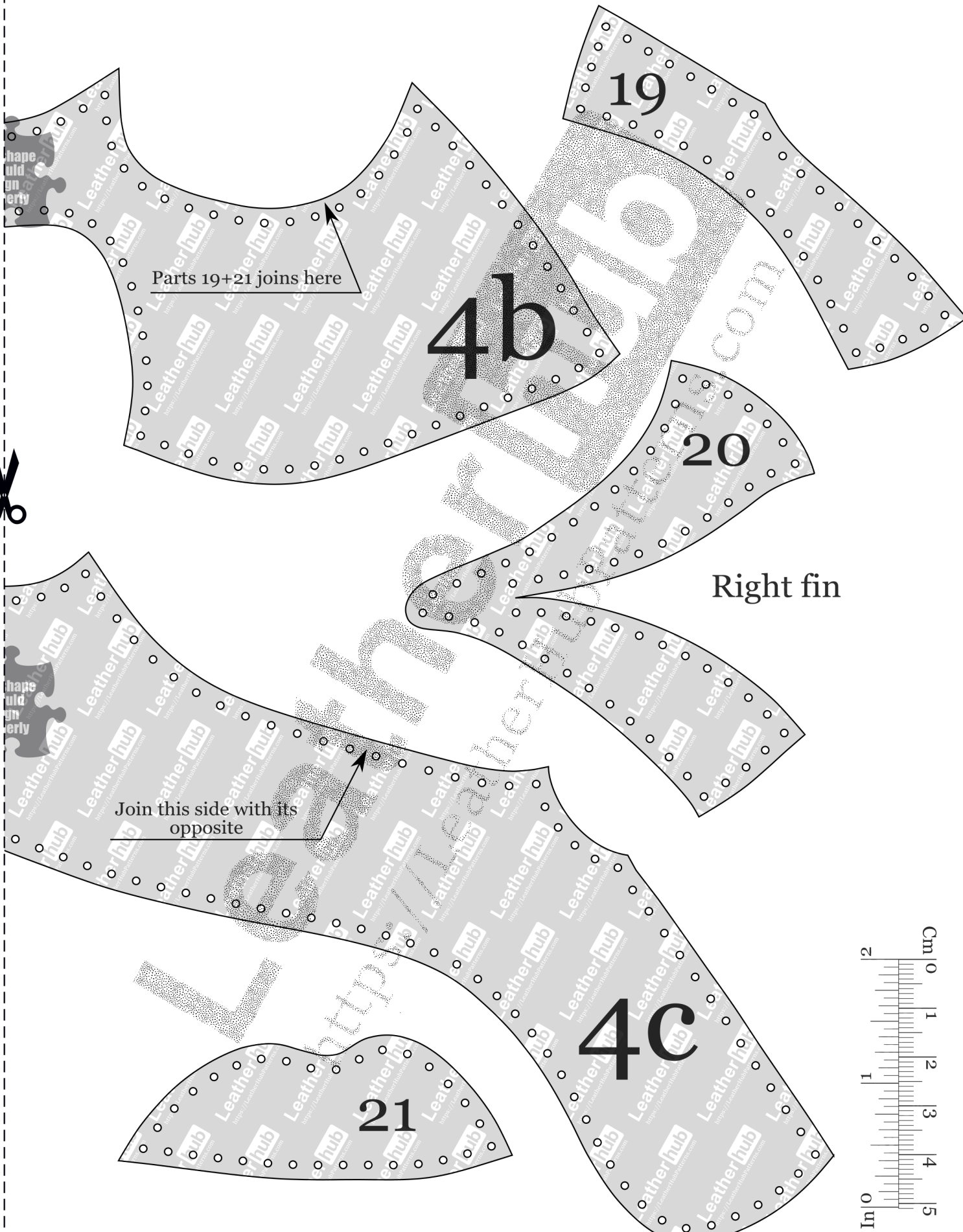
11



The center hole is for a rivet to fit through

10

LeatherHub.com



Parts 19+21 joins here

4b

19

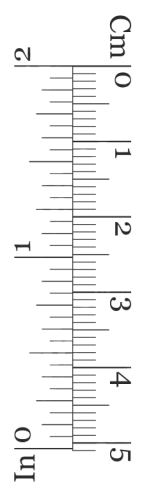
20

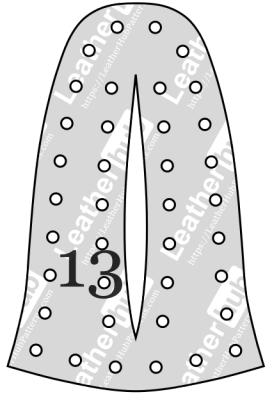
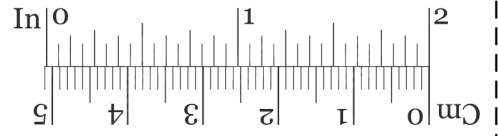
Right fin

Join this side with its opposite

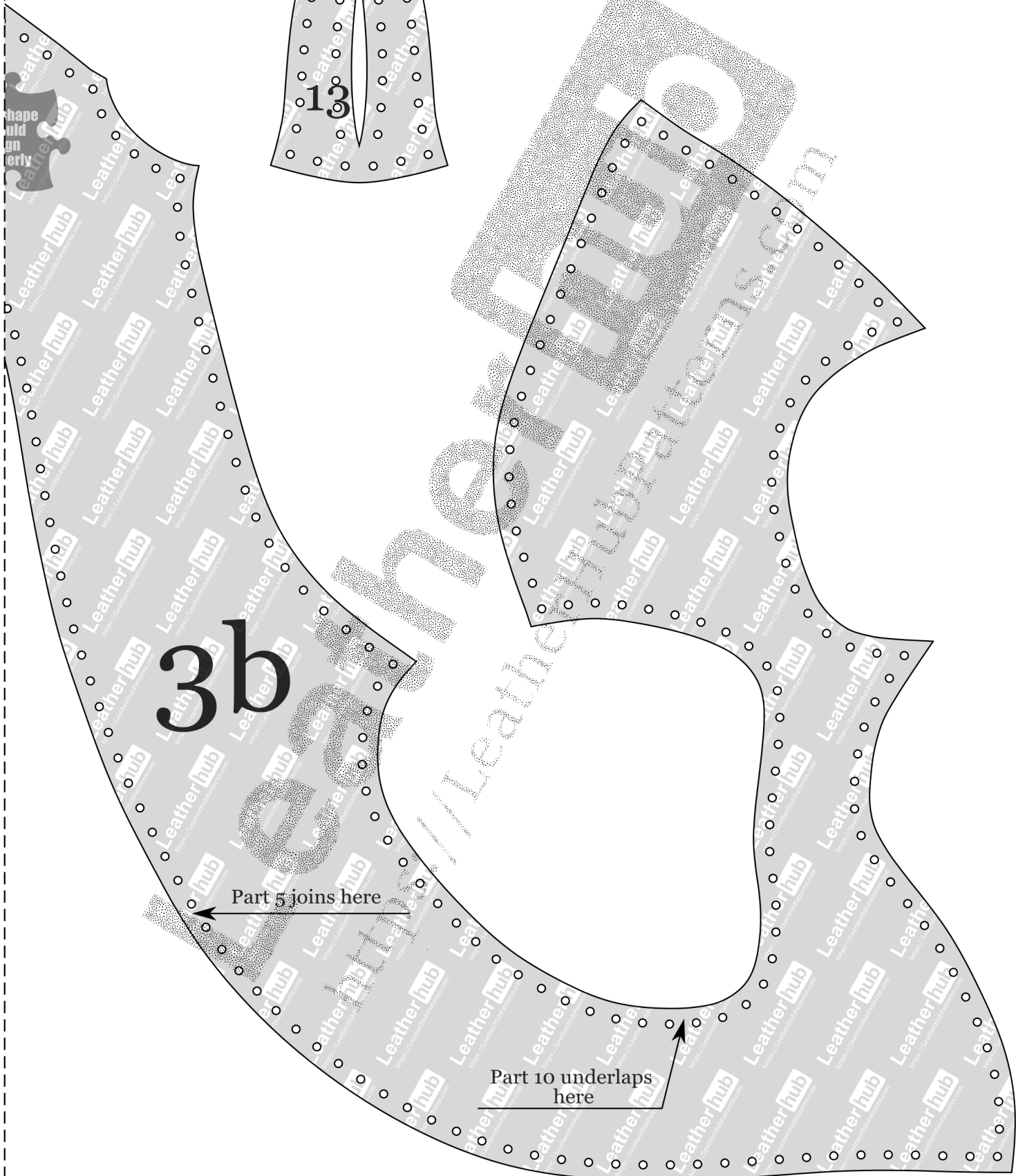
21

4c





13



3b

Part 5 joins here

Part 10 underlaps here

Part 8
underlaps
here

16
Part 3
joins
here

6b

Part 18
joins
here

Left fin

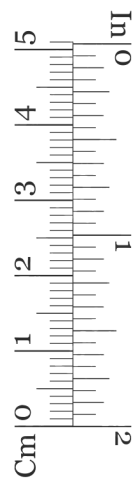
17

Part 6
joins here

Part 18
joins
here

5a

Part 5 joins here



18

Part 16
joins
here



This shape
should

This shape
should

