

Voodoo Doll

By Paintyee

Instagram: Paintyee

Instruction video on youtube under Paintyee

- Cut
- - - - - Stitch
- - - - - Align

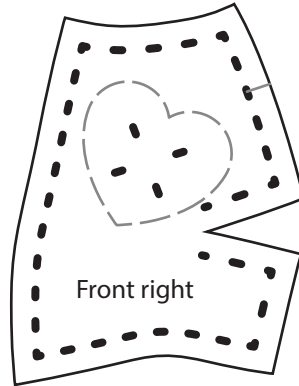
Materials needed for this project:

- 5 oz leather, regular temper
- 0.8 mm thread
- 3/4" button

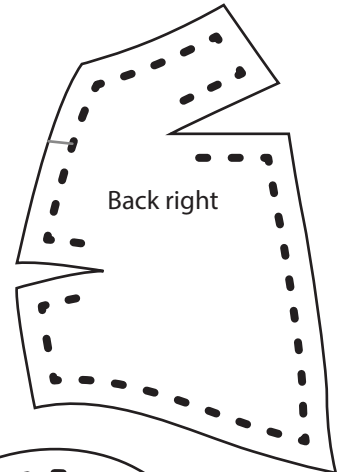
Button Eye



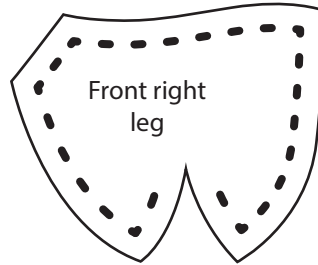
Heart



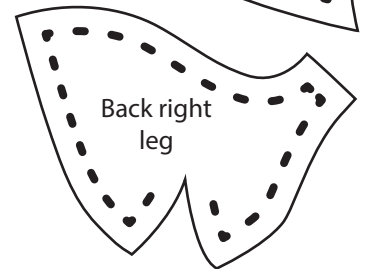
Front right



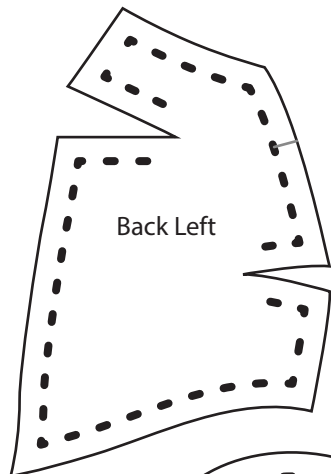
Back right



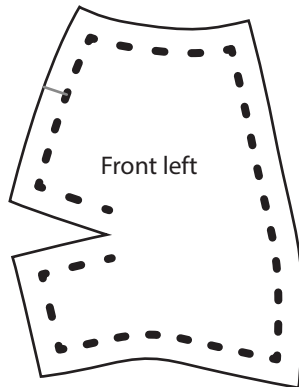
Front right leg



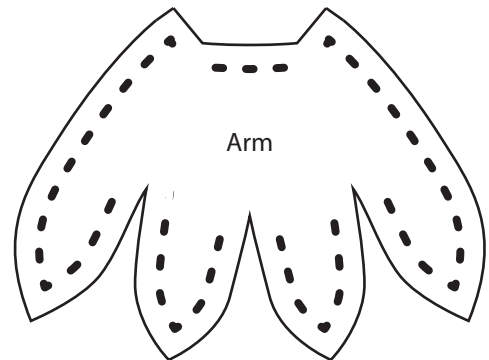
Back right leg



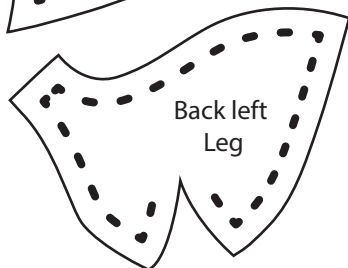
Back Left



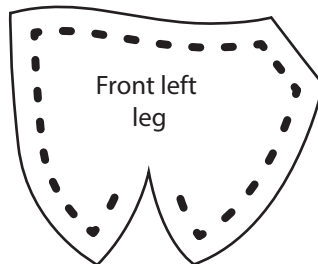
Front left



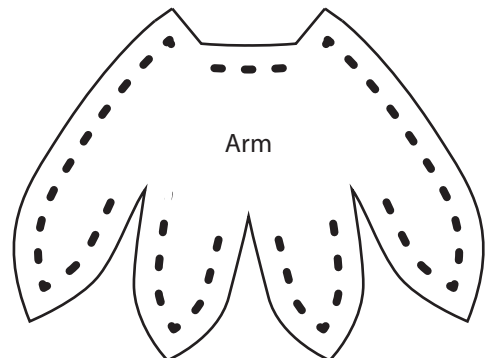
Arm



Back left Leg



Front left leg



Arm

Head pieces

