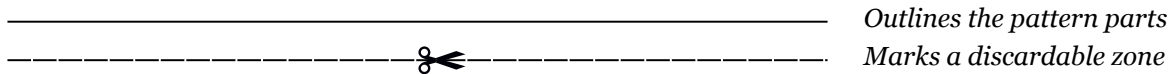


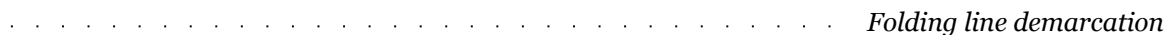
Annotations

- Print this pattern using the US Letter type format regardless of what type of paper you are using and make sure that you disable the page margins from the printing options before you start so that the pattern will print at a 1:1 scale.

- The parts outlined with a simple line and filled with a gray shade need to be cut out and assembled together after trimming the areas marked with a dashed line and a scissor. Ex:



- The dotted lines represent areas where the leather needs to be folded. Not to be confused with the hollow circles which demarcate rivet holes or stitching holes that are to be punched out. Ex:



- The puzzle piece that you may encounter is there for making sure you are aligning the right pieces in their proper order:



- The outlined circles need to be punched out and the size of the holes will be left out to your preference depending on what type of accesories or tools you are planning to use (rivets, needles, snap fasteners, stitching punches, hole punches, etc). Ex:

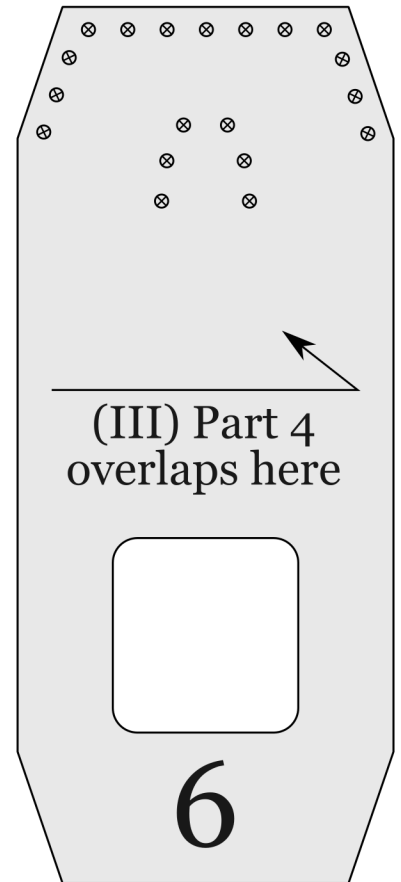
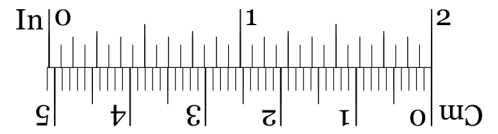
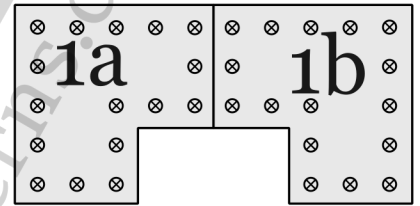
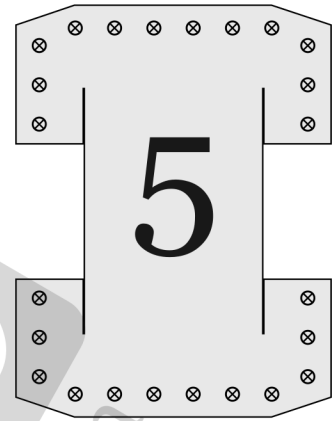
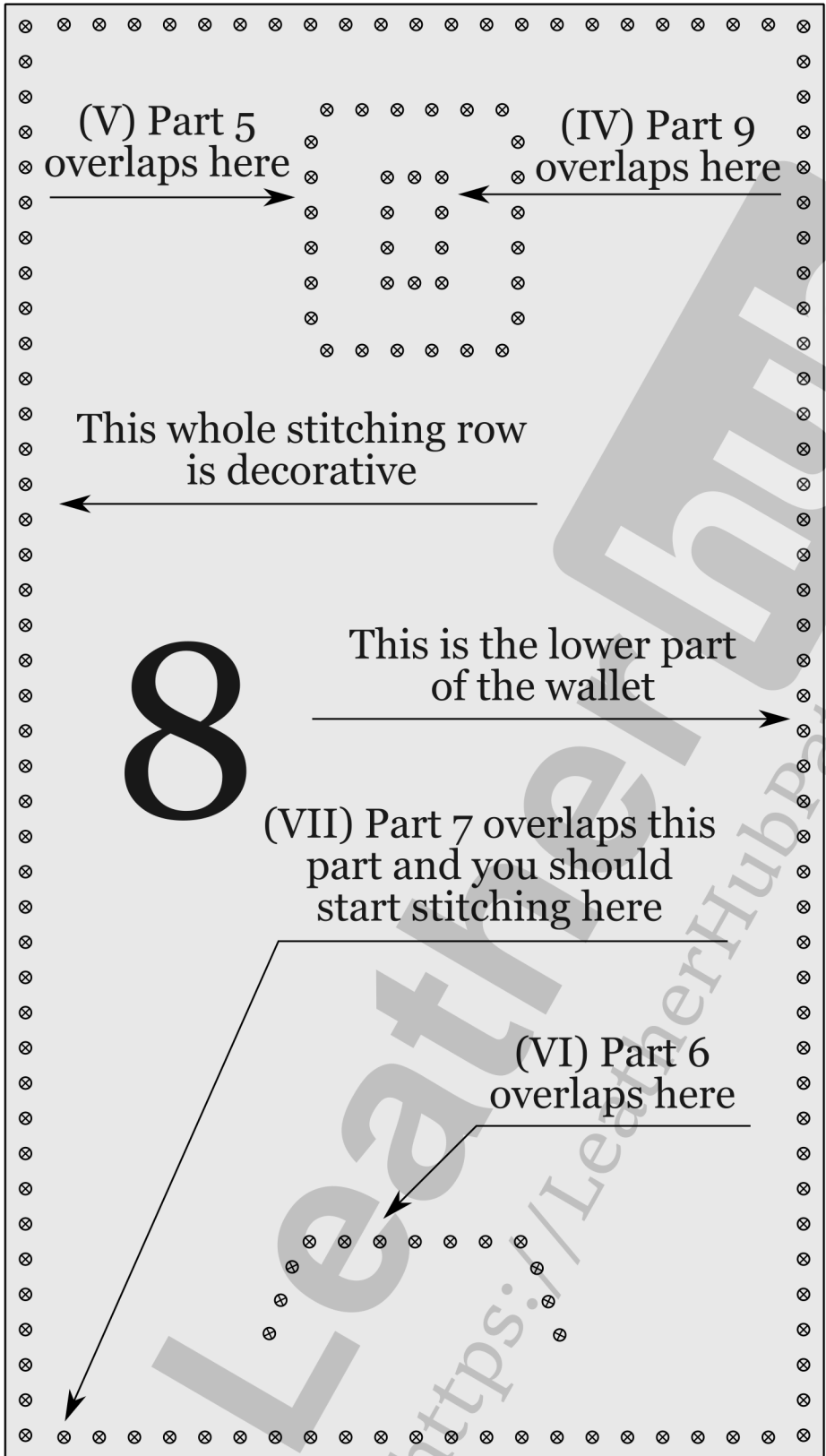


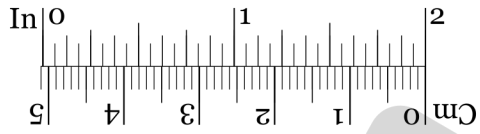
- Measure the small ruler situated on each page and make sure it's not smaller nor larger than your instrument of measure:



- Each part of the project is assigned a number however these parts are represented using a letter as well. For example (1a, 1b, 1c) make up the same part while the letters are there only to hint at the order of assembly which will always be alphabetical, from left to right.

- Numeral numbers represent the steps you need to take towards completing the project. Ex: (I) means that you should begin with that operation, (IV) marks the fourth step to be followed and so on.





2

3

This side down



(I) Parts 1 overlap here

(II) Part 2 overlaps here

This is the lower part of the wallet

(II) Part 3 overlaps here

7